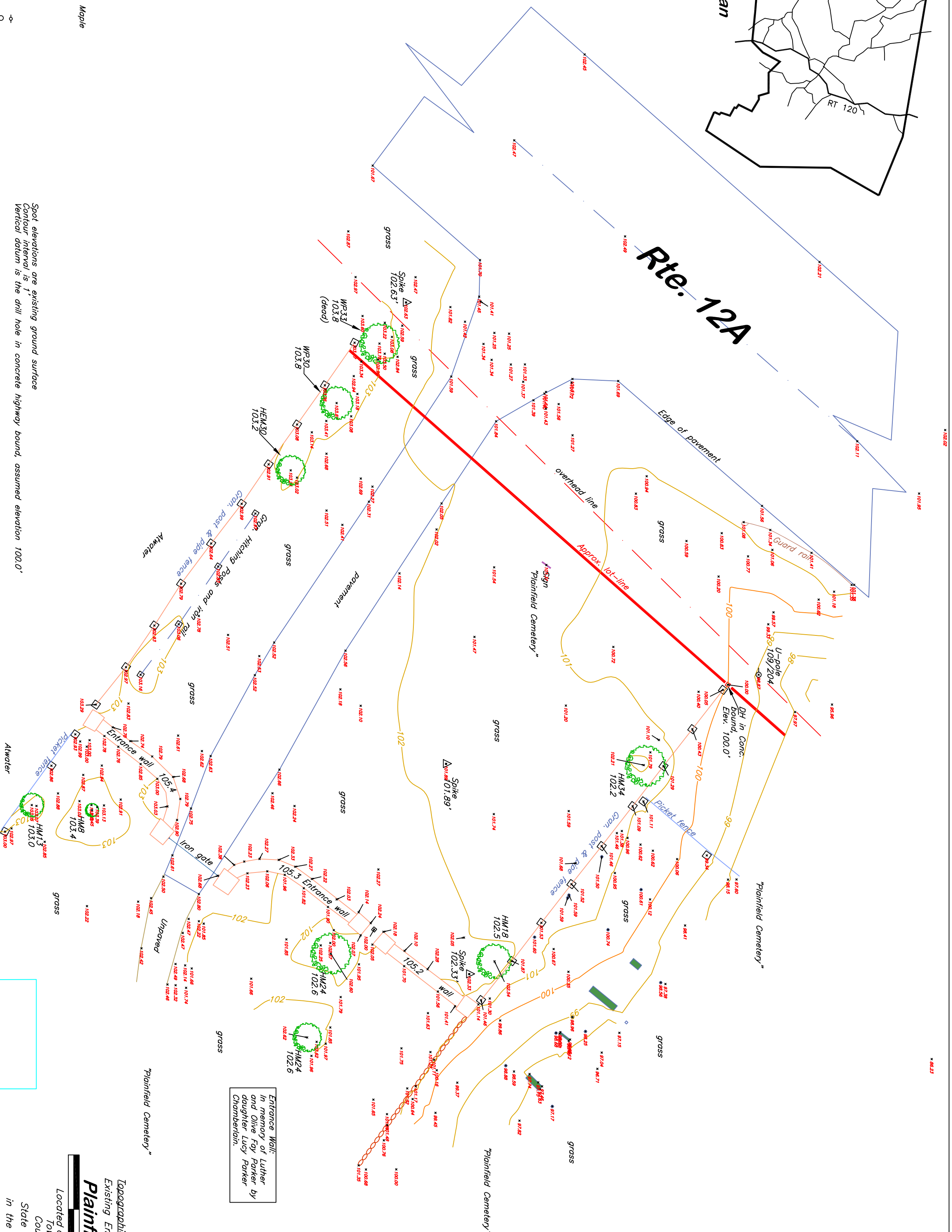


Location Plan



Tree Abbreviations:

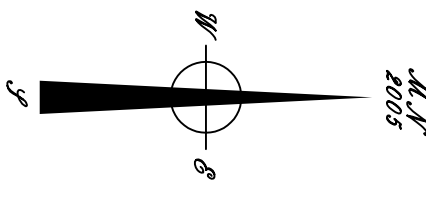
- HMK30— 30" diam. Hemlock
- WP30— 30" diam. White Pine
- HM30— 30" diam. hard(Sugar) Maple

**Legend**

- Stone wall
- Wire fence
- Utility pole
- Set Monument
- Found Monument
- Stone or concrete bound
- Well
- Cemetery Lot corner marker
- Cemetery headstone
- Basis of bearings: Magnetic compass 2005

Spot elevations are existing ground surface  
 Contour interval is 1'  
 Vertical datum is the drill hole in concrete highway bound, assumed elevation 100.0'

Entrance Wall:  
 Survey by Luther  
 and Olive Roy Parker  
 by daughter Lucy  
 Chamberlain.



**Topographic Plan of Existing Conditions**  
 Existing Entrance to south section of  
**Plainfield Cemetery**

Located on RTE. 12A  
 Town of Plainfield  
 County of Sullivan  
 State of New Hampshire Date: July 14, 2005  
 in the Town of Plainfield  
 Surveyed for: Town of Plainfield  
 PO Box 380  
 Meriden, NH 03770

**Rollins Land Survey**  
 71 Bank Street, Studio 103  
 Lebanon, NH 03766

Christopher E. Rollins NHLS 527