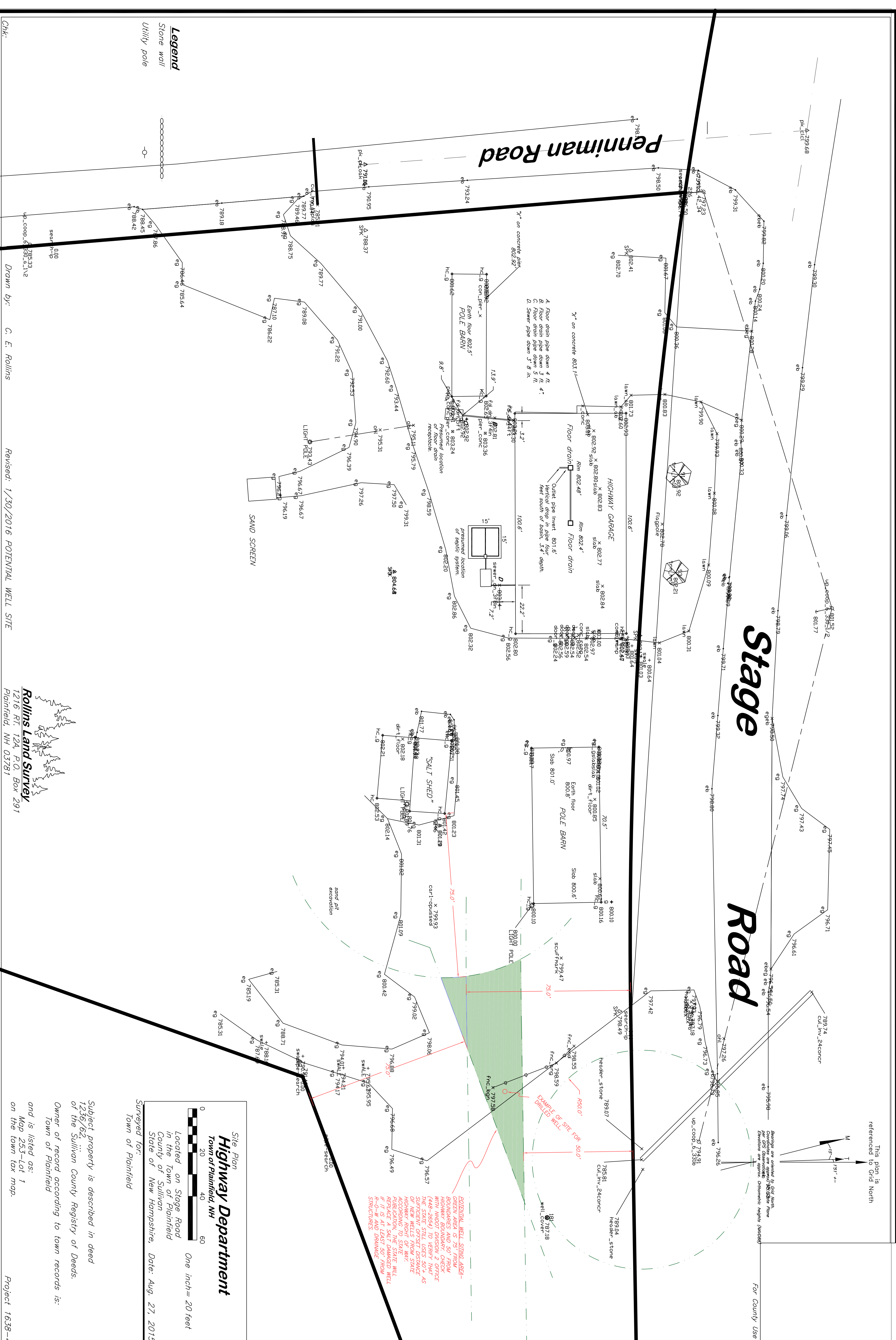


This plan is referenced to Grid North

Bearings are related to Grid North. Coordinates are given to 2nd State Plane. Elevations are given to 1st State Plane. Distances are given. Orthometric Heights (MADSD)

For County Use



Penniman Road

Stage Road

A Floor drain pipe down 4 ft.
 B Floor drain pipe down 5 ft.
 C Floor drain pipe down 5 ft.
 D Sewer pipe down 3' 8 in.

1/2" on concrete 802.92
 1/2" on concrete 803.1

Earth floor 802.5'
 POLE BARN

Floor drain
 Outlet pipe invert 801.6'
 Vertical drop in pipe four
 feet section of drain, 5'4" depth.

HIGHWAY GARAGE
 Floor drain
 15'

SAND SCREEN

LIGHT POLE

SAND PIT EXCAVATION

"SALT SHED"
 LIGHT POLE

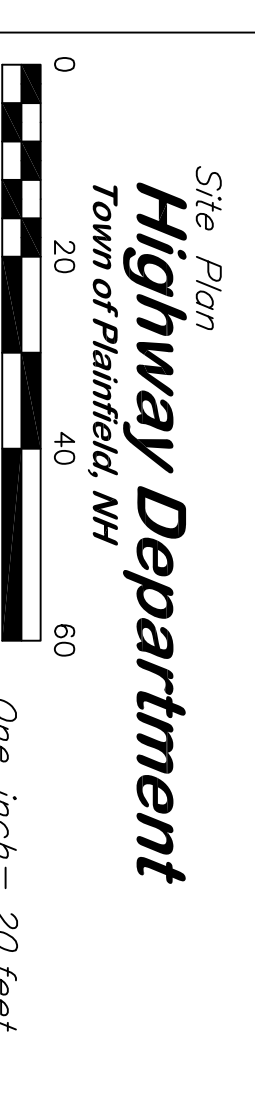
EXAMPLE OF SITE FOR 80.0'
 DRILLED WELL

POTENTIAL WELL SIZING AREA - GREEN AREA IS 75' FROM BOUNDARIES AND 50' FROM HIGHWAY DEPARTMENT WITH WHODOT DIVISION 2 OFFICE (448-2654) TO VERIFY THAT THE STATE STILL USES 50.4 AS THE NEW MILESTONE SPACING ON NEW MILELS OF HWY ACCORDING TO STATE MILE RELOCATION. THE STATE WILL RELOCATE THE STATE MILE IF IT IS AT LEAST 50' FROM R-O-W AND DEMOLISH STRUCTURES.

Legend

Stone wall

Utility pole



Site Plan
Highway Department
 Town of Plainfield, NH
 Located on Stage Road
 in the Town of Plainfield
 County of Sullivan
 State of New Hampshire, Date: Aug. 27, 2015
 Surveyed for:
 Town of Plainfield

Subject property is described in deed
 1236/62, ...
 of the Sullivan County Registry of Deeds.
 Owner of record according to town records is:
 Town of Plainfield
 and is listed as:
 Map 253-Lot 1
 on the town tax map.

CHK:

Drawn by: C. E. Rollins

Revised: 1/30/2016 POTENTIAL WELL SITE

Rollins Land Survey
 1216 Rt. 124 P.O. Box 291
 Plainfield, NH 03781

Project 1638-4