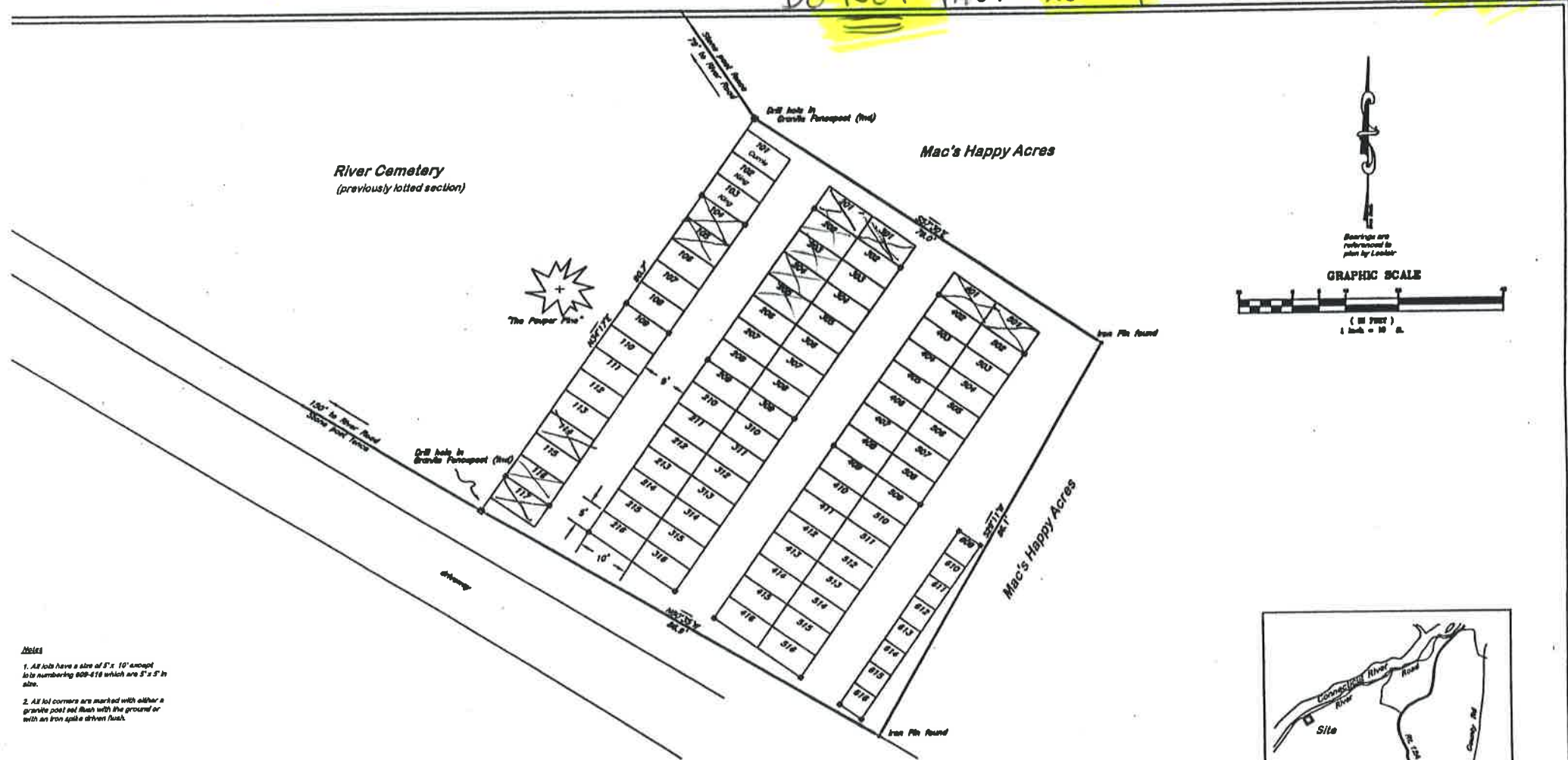


* Lot 115 is new purchase

lot 116 is Norma's husband

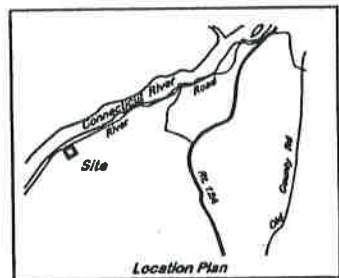
so 2 of the existing "H" Cornerstones from lot 116
 need to be moved over so it will all be one.

Do NOT move Lot 114 Cornerstones - Those are a different Hazelton!!



- Notes**
1. All lots have a size of 5' x 10' except to be numbering 600-618 which are 5' x 5' in size.
 2. All lot corners are marked with either a granite post set flush with the ground or with an iron spike driven flush.

ROSTER				
101	Sold	201	Mercier	301
102	Sold	202		302
103	Sold	203		303
104	Sold	204		304
105	Sold	205		305
106		206		306
107		207		307
108		208		308
109		209		309
110		210		310
111		211		311
112		212		312
113	Sold to W. Hazelton	213		313
114	Sold to Hazelton	214		314
115	Sold Hazelton	215		315
116		216		316
117	FURNEL TOWER	217		317
		218		318



**Plan of Lot Layout
 River Cemetery- East Section**
 One Acre 10 B. Date: October 1, 2000
 Located on River Road
 in the Town of Plainfield
 County of Sullivan
 State of New Hampshire

Rollins Land Survey
 11 Bank Street, Shute 102



Surveyed for:
 Town of Plainfield, NH