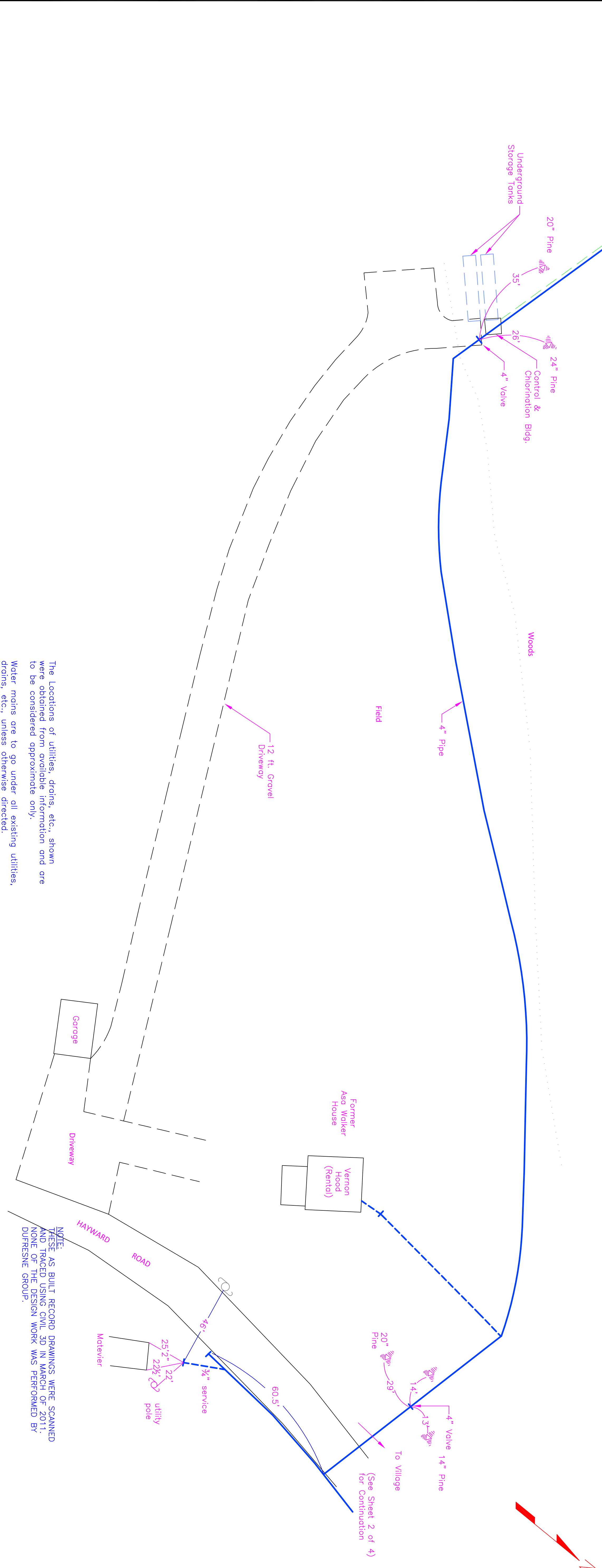
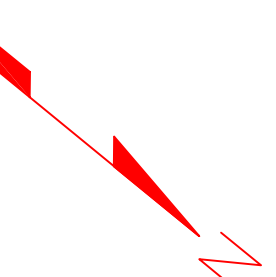


CROSS SECTION OF DUG WELL WITH CORRUGATED ALUMINUM COVER

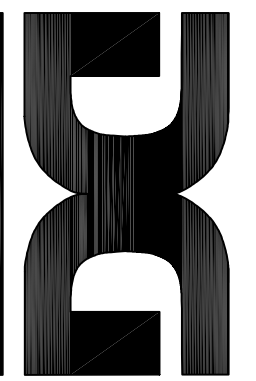
Dug Well N.T.S.
 Minimum diameter at ground surface = 14ft.
 " " depth of excavation = 15ft. below ground water level.
 " " diameter at bottom of excavation = 7ft.

RECORD DRAWINGS AS BUILTS 6-1-72



The Locations of utilities, drains, etc., shown were obtained from available information and are to be considered approximate only.
 Water mains are to go under all existing utilities, drains, etc., unless otherwise directed.

NOTE: THESE AS BUILT RECORD DRAWINGS WERE SCANNED AND TRACED USING CIVIL 3D IN MARCH OF 2011. NONE OF THE DESIGN WORK WAS PERFORMED BY DUFRESNE GROUP.



DUFRESNE GROUP
CONSULTING ENGINEERS
 54 Main Street, P.O. Box B
 Windsor, Vermont 05089
 E-mail: dufresne@vermontdug.com
 Web: www.dufresnegrup.com
 Windsor, VT • Tel: (802) 674-2904 Fax: (802) 674-2913
 Barn, VT • Tel: (802) 479-3898 Fax: (802) 479-2881
 St. Johnsbury, VT • Tel: (802) 748-8605 Fax: (802) 748-4912
 Dufresne Group is owned by Dufresne & Associates, PC.

REVISIONS		
DATE	COMMENTS	BY

THIS DRAWING SHALL NOT BE REUSED OR ALTERED IN ANY WAY WITHOUT THE WRITTEN APPROVAL AND AUTHORITY OF DUFRESNE GROUP. ANY REVISIONS SHALL BE MADE BY DUFRESNE GROUP.

PLAINFIELD VILLAGE WATER DISTRICT
WELL SITE PLAN AND DETAILS
 PLAINFIELD, NEW HAMPSHIRE

Project #	
Project Mgr.	
Design by	O.P.
Drawn by	LMP
Reviewed by	LMP
Approved by	LMP
Date	JUNE 1971
Scale	1" = 500' APPROX.