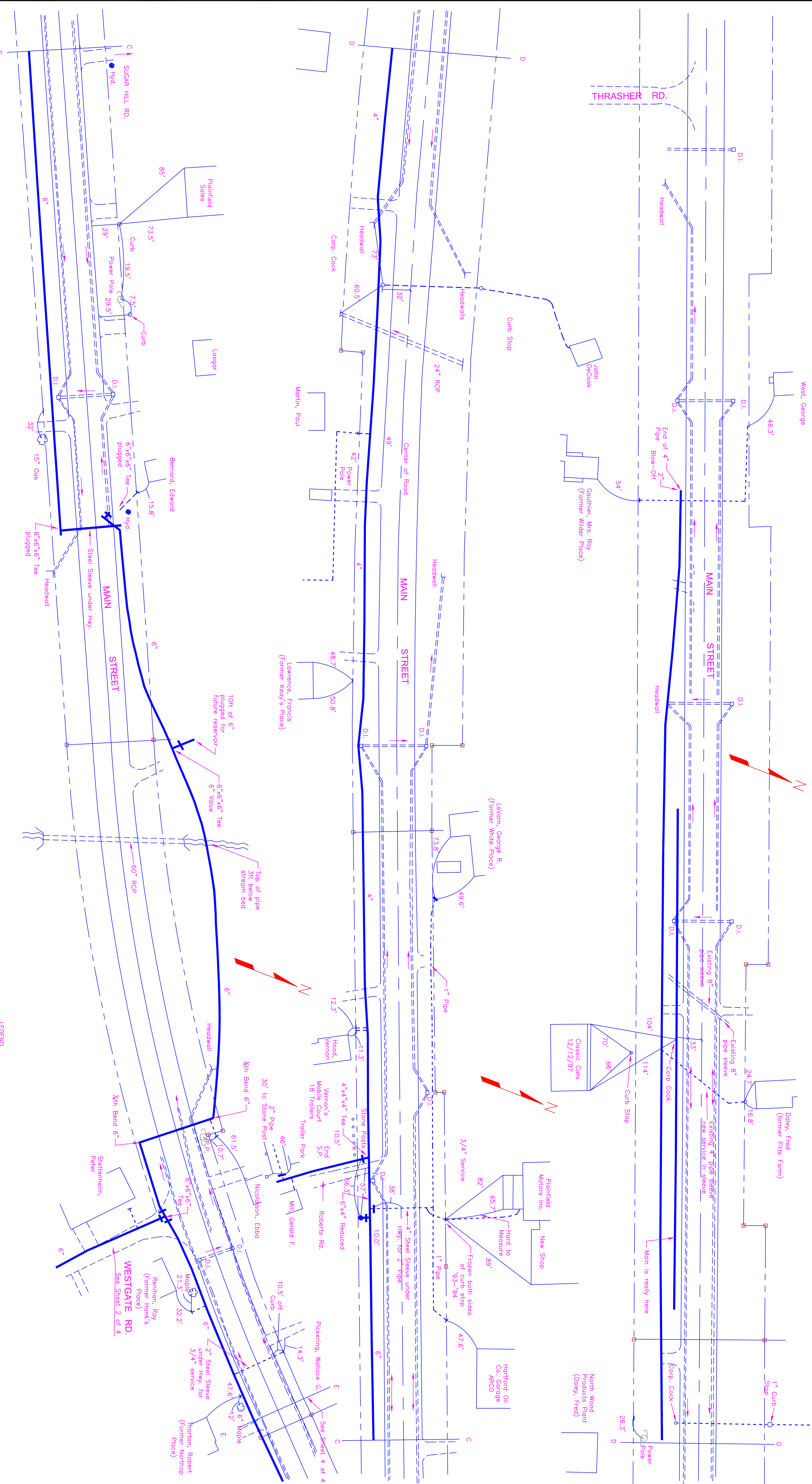




DUFRESNE GROUP
CONSULTING ENGINEERS
 54 Main Street, P.O. Box B
 Windsor, Vermont 05089
 E-mail: dgr@vermont.net
 Web: www.dufresnegroup.com
 Windsor, VT • Tel: (802) 674-2904 Fax: (802) 674-2913
 Barre, VT • Tel: (802) 479-3898 Fax: (802) 479-2851
 St. Johnsbury, VT • Tel: (802) 748-8605 Fax: (802) 748-4512
 Dufresne Group is licensed by Dufresne & Associates, PC

REVISIONS		
DATE	COMMENTS	BY

THIS DRAWING SHALL NOT BE REUSED OR ALTERED IN ANY WAY WITHOUT THE WRITTEN APPROVAL AND AUTHORITY OF DUFRESNE GROUP. ANY REVISIONS SHALL BE MADE BY DUFRESNE GROUP. ©



The locations of utilities, drains, etc., shown on this drawing are approximate and are to be considered approximate only. Water mains are to go under all existing utilities, drains, etc., unless otherwise directed.

LEGEND

	Hydrant
	6" pipe & valve
	4" pipe & valve
	2" pipe
	House service connection
	Drainage on slide highway

NOTE:
 THESE AS BUILT RECORD DRAWINGS WERE SCANNED AND TRACED USING CIVIL 3D IN MARCH OF 2011. NONE OF THE DESIGN WORK WAS PERFORMED BY DUFRESNE GROUP.

PLAINFIELD VILLAGE WATER DISTRICT

WATER MAIN PLAN

PLAINFIELD, NEW HAMPSHIRE

Project #	
Project Mgr.	
Design by	O.P.
Drawn by	LMP
Reviewed by	LMP
Approved by	
Date	JUNE 1971
Scale	1" = 500' APPROX.

SHEET 3 OF 4