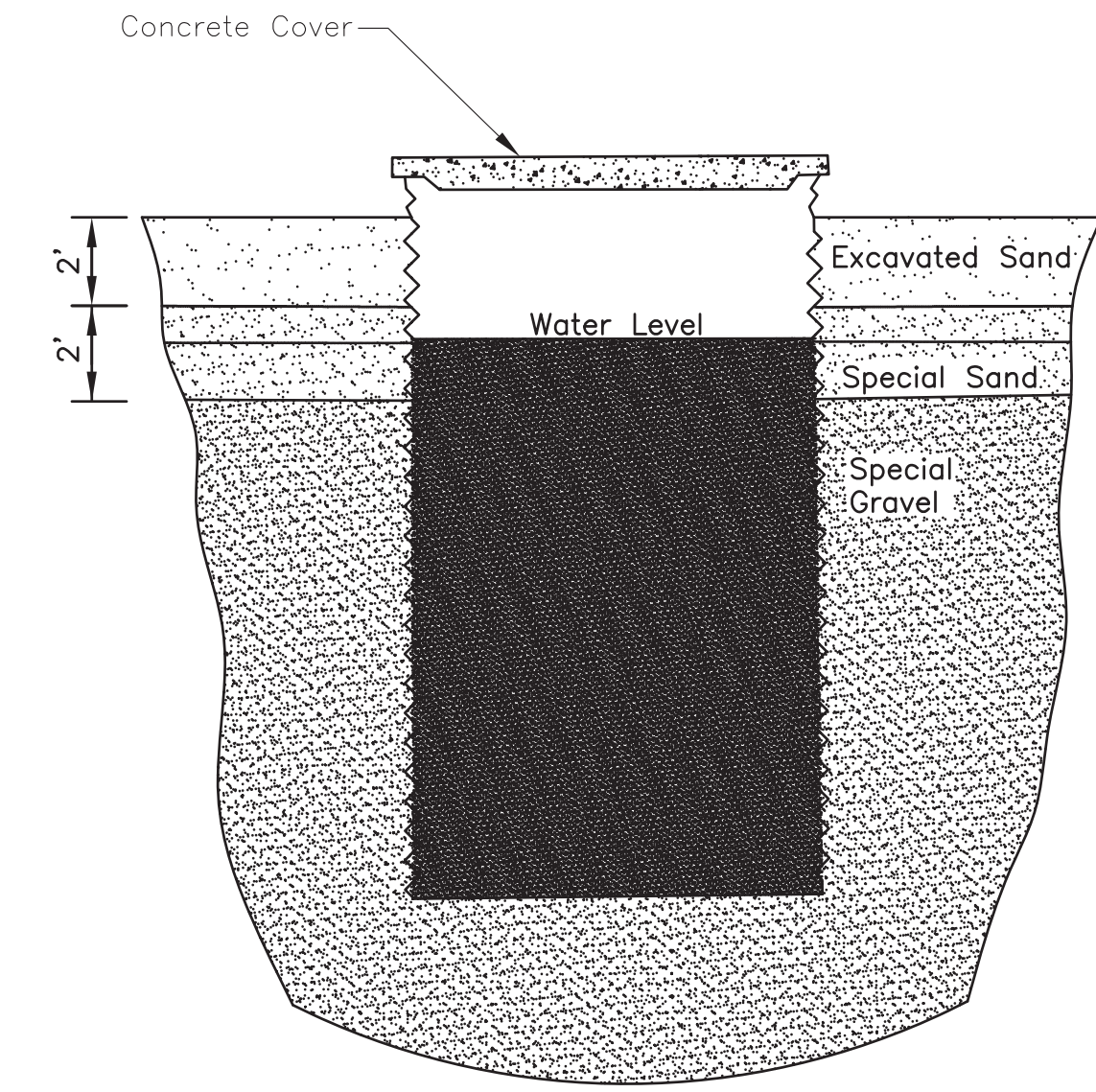


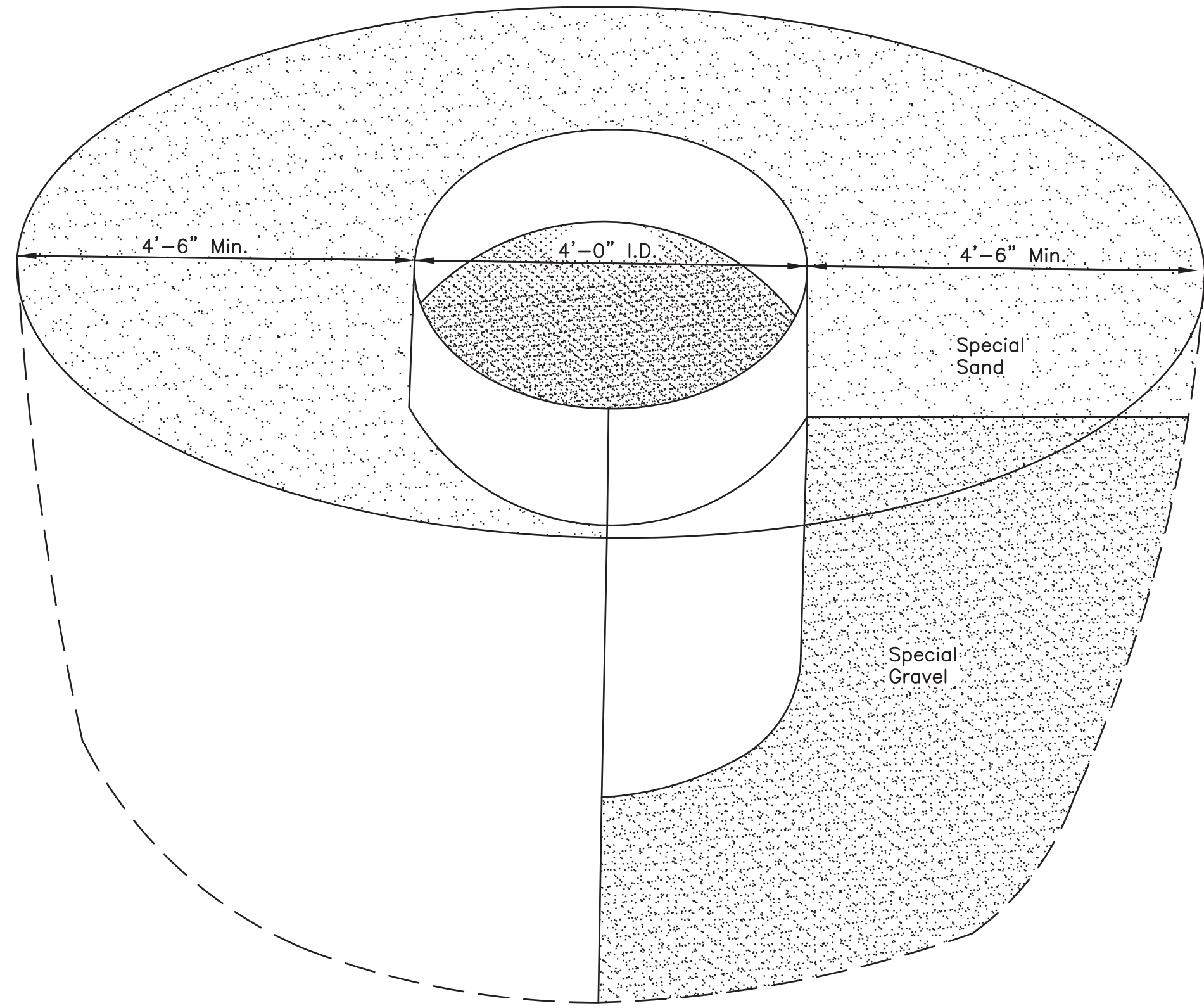


DUFRESNE GROUP
CONSULTING ENGINEERS
54 Main Street, P.O. Box B
Windsor, Vermont 05089
E-mail: dufresne@vermontel.net
Web: www.dufresnegroup.com

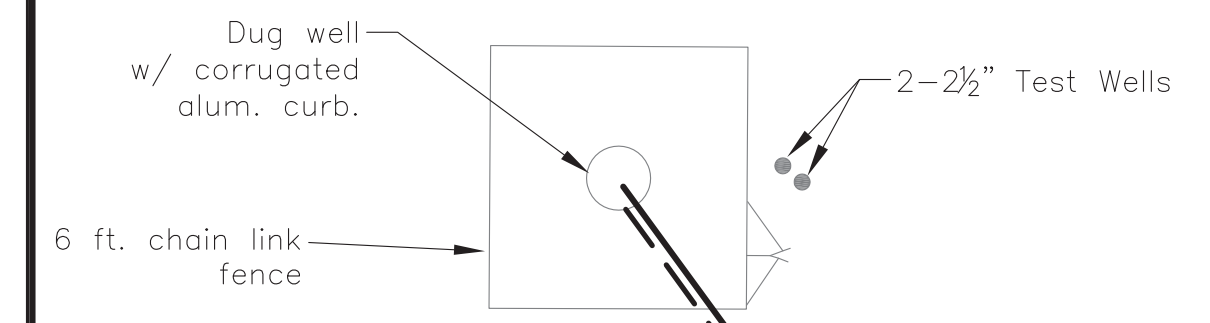
Windsor, VT • Tel: (802) 674-2904 Fax: (802) 674-2913
Barre, VT • Tel: (802) 479-3698 Fax: (802) 479-2261
St. Johnsbury, VT • Tel: (802) 748-8605 Fax: (802) 748-4512
Dufresne Group is owned by Dufresne & Associates, PC



CROSS SECTION OF DUG WELL WITH CORRUGATED ALUMINUM CURB

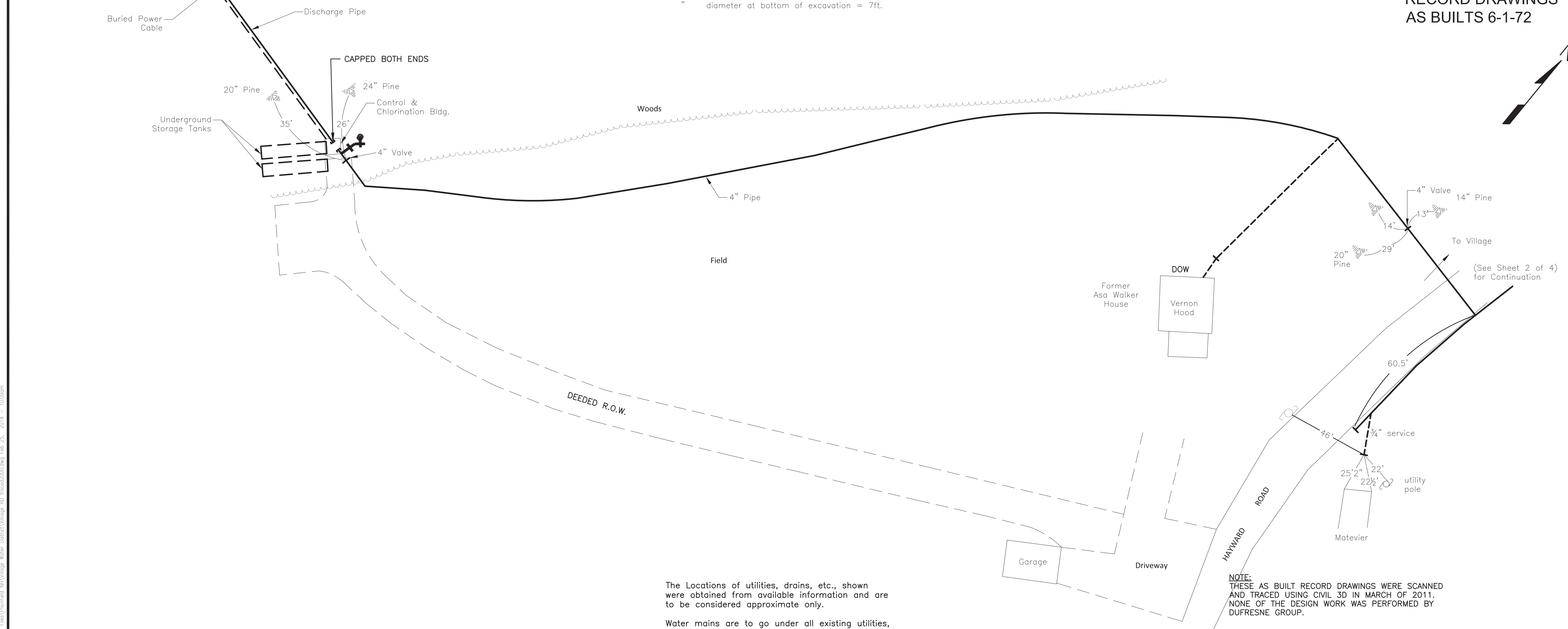


Dug Well N.T.S.
Minimum diameter at ground surface = 14ft.
" depth of excavation = 15ft. below ground water level.
" diameter at bottom of excavation = 7ft.



**RECORD DRAWINGS
AS BUILTS 6-1-72**

| REVISIONS | DATE | COMMENTS | BY |
|-----------|------|----------|----|
| | | | |
| | | | |
| | | | |
| | | | |
| | | | |
| | | | |
| | | | |
| | | | |
| | | | |



The Locations of utilities, drains, etc., shown were obtained from available information and are to be considered approximate only.
Water mains are to go under all existing utilities, drains, etc., unless otherwise directed.

NOTE:
THESE AS BUILT RECORD DRAWINGS WERE SCANNED AND TRACED USING CIVIL 3D IN MARCH OF 2011. NONE OF THE DESIGN WORK WAS PERFORMED BY DUFRESNE GROUP.

PLAINFIELD VILLAGE WATER DISTRICT
WELL SITE PLAN AND DETAILS
PLAINFIELD, NEW HAMPSHIRE

| | |
|--------------|-------------------|
| Project # | |
| Project Mgr. | |
| Design by | |
| Drawn by | O.P. |
| Reviewed by | LMP |
| Approved by | LMP |
| Date | JUNE 1971 |
| Scale | 1" = 500' APPROX. |

C1

FILE: p:\CAD00_Plan\Drawings\WVillage Water_Batch\WVillage_BD_100000.dwg, Feb 25, 2014 - 10:09am