

New Hampshire Accessibility Code Requirements

Approved by the NH Committee on Architectural Barrier-Free Design on January 17, 2012

This document is to be used as a guideline for basic accessibility code compliance for facilities in the state of New Hampshire. This checklist does not address all code requirements for accessibility. Accessibility code requirements specific to medical care facilities including hospitals and skilled nursing facilities, and residential facilities, including one- and two-family homes, apartments and dormitories, are not included.

Checklists provided in this document include:

- Accessible Parking Spaces
- Exterior Accessible Path of Travel from Sidewalks/Parking Lot to Accessible Entrance
- Ramps
- Stairs
- Accessible Entrances and Exterior Doors
- Accessible Counters
- Accessible Interior Path of Travel, Obstacles, Doors
- Elevators and Lifts
- Accessible Toilet Rooms, Accessible Water Closets, Accessible Urinals, Accessible Lavatories, and Accessible Drinking Fountains (Bath Tubs & Showers are not included)
- Fire Alarms and Fire Extinguishers
- Accessible Public Telephones
- Signs
- Employee Break Rooms with Kitchens

Applicable Accessibility Codes:

The Architectural Barrier-Free Design Code for the State of NH (Abfd 300 - AB Code)

http://www.gencourt.state.nh.us/rules/state_agencies/abfd100-300.html

IBC 2006, as amended; ICC/ANSI A117.1 2003, as amended.

U.S. Dept. of Justice 2010 ADA Standards for Accessible Design (ADAAG)

Introduction: <http://www.ada.gov/regs2010/2010ADAStandards/2010ADAstandards.htm>

Application and Administration:

<http://www.ada.gov/regs2010/2010ADAStandards/2010ADAstandards.htm#c1>

Please Note: The ADA has undergone significant changes. The new Title II and Title III regulations are now in effect. The 2010 ADA Standards for Accessible Design are in effect as of March 15, 2012. Please read the important information on this page:

http://www.ada.gov/revised_effective_dates-2010.htm

NH State Building Code - IBC 2009, as amended, and ICC/ANSI A117.1-2003, as amended.

<http://www.gencourt.state.nh.us/rsa/html/XII/155-A/155-A-mrg.htm>


Means of Egress - The Life Safety Code, NFPA 101, 2003 Edition

<http://www.nfpa.org/aboutthecodes/aboutthecodes.asp?docnum=101>

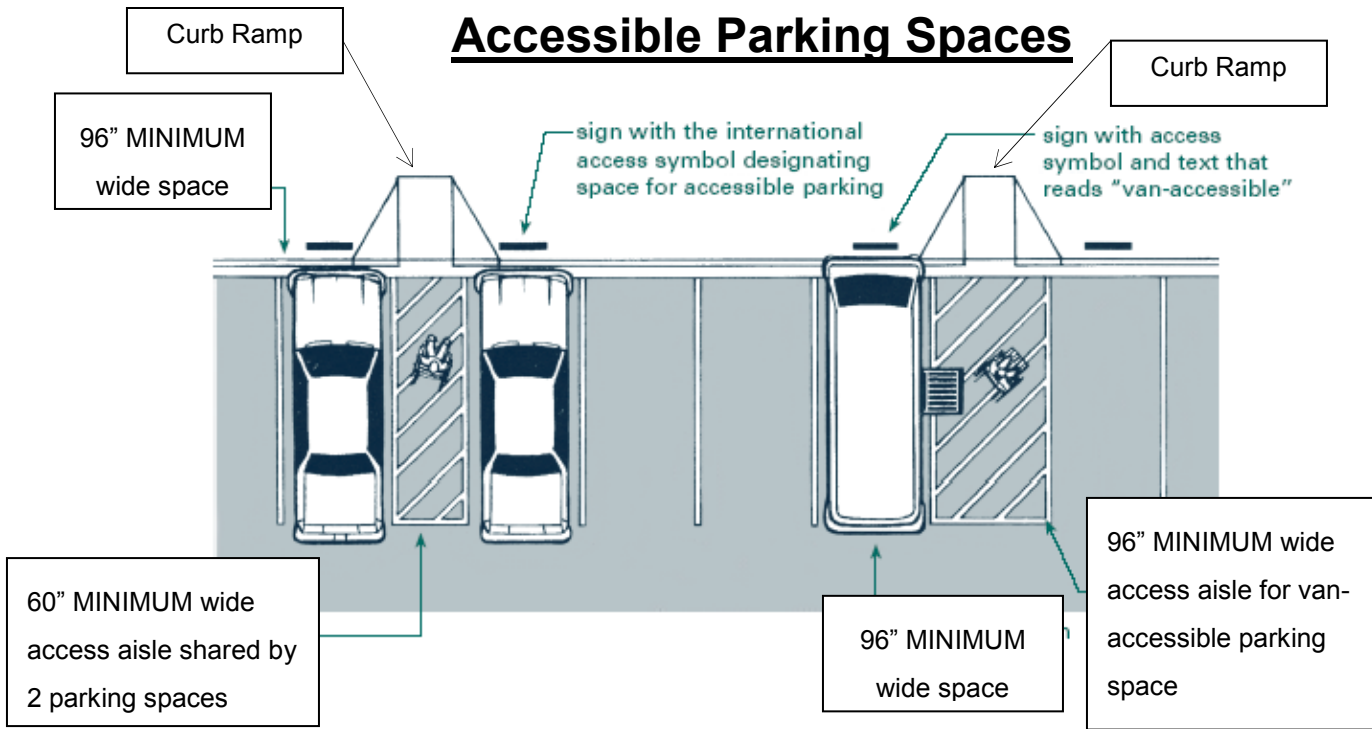
Codes cited: IBC 2009, ANSI 2003, and ADAAG 2010; Links have been provided to the 2010 U.S. Dept. of Justice ADA Standards for Accessible Design, which, for the most part, are identical to IBC and ANSI requirements.

FACILITY EVALUATED _____

DATE _____ **NAME** _____

Accessible Parking Spaces CHECKLIST		✓
1.	There are designated accessible parking spaces located as close as possible to the accessible entrance. IBC 1106.5; ADAAG 208 <i>If only on-street parking is provided, answer all but #2.</i>	
2.	The minimum amount of accessible parking spaces is provided in the parking lot, based on the total number of available parking spaces (i.e., there should be at least one accessible parking space per 25 spaces provided in each parking lot). IBC 1106.1; ADAAG 208	
	Number of parking spaces provided per lot:	
	Number of accessible parking spaces provided per lot:	
3.	All accessible parking spaces and access aisles are located on a level surface, with the grade being no more than 1:48 (2%) in all directions. ANSI 502.5; ADAAG 502	
4.	Each accessible parking space is at least 96 inches wide. ANSI 502.2; ADAAG 502 ; (Refer to <i>Abfd 303.02(2)</i> on next page.)	
5.	(a) Number of van-accessible parking spaces provided: <i>1 per 8 for existing parking lots; 1 per 6 for new parking lots; IBC 1106.5; ADAAG 208.2.4</i>	
	(b) Each van-accessible parking space is designated with a sign displaying the wheelchair symbol that reads "VAN ACCESSIBLE". ANSI 502.7; ADAAG 502 ; NH RSA 265: 73-a	
	(c) Signs are mounted on a post with the bottom of the sign at least 60 inches from the ground. ANSI 502.7; ADAAG 502	
	(d) An adjacent access aisle (a no-parking zone usually designated by diagonal striped ground paint) that is at least 96 inches (8 feet) wide, preferably provided on the passenger side of the parking space. Abfd 303.02(3)(b) <i>NOTE: Accessible parking spaces may share an access aisle. Refer to the diagram on page 3.</i>	
	(e) Where possible, access aisles have NO PARKING signs. Abfd 303.02(4)	
6.	(a) Standard accessible parking spaces have an adjacent access aisle (a no-parking zone usually designated by diagonal striped ground paint) that is at least 60 inches (5 feet) wide, preferably located on the driver side of the parking space. Abfd 303.02(3)(a) <i>NOTE: Accessible parking spaces may share an access aisle. Refer to the diagram on page 3.</i>	
	(b) Each accessible parking space is designated with a sign displaying the wheelchair symbol. ANSI 502.7; ADAAG 502 ; NH RSA 265: 73-a	
	(c) Signs are mounted on a post with the bottom of the sign at least 60 inches from the ground. ANSI 502.7; ADAAG 502	
	(d) Where possible, access aisles have NO PARKING signs. Abfd 303.02(4)	
7.	The accessible path of travel to the accessible entrance is directly connected to the access aisle and cannot be obstructed by other vehicles. ANSI 502.4 and 502.8; ADAAG 502 <i>NOTE: For safety reasons, the accessible path of travel should not require individuals to walk behind parked vehicles.</i>	

Accessible Parking Spaces



Reproduction attributed to: The Center for Universal Design, College of Design, NC State University, Raleigh, North Carolina.

NH Requirements for Accessible Parking Spaces



NH RSA 265:73-a Parking Signs; Disabled - A parking space on private or public property that is reserved for persons who are disabled shall be marked by a sign affixed to a post or a building. Said sign shall be clearly visible to anyone directly approaching that particular space.

ANSI 502.6 Where accessible parking spaces are required to be identified by signs, the signs shall include the International Symbol of Accessibility complying with Section 703.7. Such signs shall be 60 inches (1525 mm) minimum above the floor or ground surface of the parking space, measured to the bottom of the sign.

AB Code - Abfd 303.02

- (2) Replacement of ICC/ANSI A117.1, Section 502.2, Vehicle Space Size, with the following text: "Car and van parking spaces shall be 96 inches (2440 mm) minimum in width."
- (3) Replacement of ICC/ANSI A117.1, Section 502.4.2, Width, with the following text:
 - a. Access aisles serving car parking spaces shall be 60 inches (1525 mm) minimum in width.
 - b. Access aisles serving van parking spaces shall be 96 inches (2440 mm) minimum in width.
- (4) The addition to ICC/ANSI A117.1, Section 502.4.4, Marking, of the following text:
 - a. Except as provided in b. below, access aisles shall be designated by vertical 'No Parking' signs:
 1. Located at the front of the access aisle;
 2. Mounted with the bottom of the sign 60 inches (1525 mm) minimum above the floor of the access aisle.
 - b. Access aisles shall not be required to be designated by vertical 'No Parking' signs when:
 1. The placement of a sign would obstruct the accessible route to the accessible building entrance;
 2. There is a non-removable physical obstacle preventing the placement of a sign;
 3. The placement of a sign would be in front of a window wall; or
 4. The placement of a sign would violate a provision of IBC 2006 or a provision of ICC/ANSI A117.1 2003.

Exterior Accessible Path of Travel From Sidewalks/Parking Lot to Accessible Entrance CHECKLIST

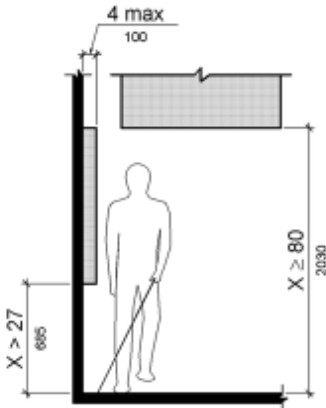


1. From the sidewalk, or from the parking space access aisle, to the accessible entrance, the path of travel is firm, stable and slip-resistant, with a smooth walking surface. ANSI 302.1; [ADAAG 302.1](#)

2. If there are grated openings in the path of travel, they are small enough so that a ½-inch sphere cannot pass through, and the long dimension of the opening is perpendicular to the dominant direction of travel. ANSI 302.3; [ADAAG 302.3](#)

3. The path of travel is at least 36 inches wide. ANSI 403.5; [ADAAG 403.5.1](#)

4. Overhead or wall-mounted signs, tree branches, and other objects do not protrude more than 4 inches into the path of travel. ANSI 307.2; [ADAAG 307](#)
If NO, answer (a), (b), and (c). If YES, skip to #5.



For any objects they are:

(a) Mounted lower than 27 inches from the floor.

(b) Mounted higher than 80 inches from the floor.

(c) **If NO to (a) or (b)**, can the object(s) be removed or can the route be changed to avoid the object(s)? *If NO, explain:*

5.	<p>If there are any curbs, curb ramps are provided. <i>If no curbs or if no curb ramps are provided, skip to #9.</i> Refer to the diagram on next page.</p> <p>ANSI 403.4 & 303; ADAAG 403.4 & ADAAG 303</p>	
6.	<p>The curb ramp is at least 36 inches wide, excluding the flared sides.</p> <p>ANSI 406; ADAAG 406</p>	
7.	<p>The slope of the curb ramp is no steeper than 1:12 (8.3%). <i>Note: 1:12 means there is one inch of rise in vertical height for every 12 inches of run in horizontal length.</i></p> <p>ANSI 406; ADAAG 406</p>	
8.	<p>Where a curb ramp transitions from a sidewalk to a street, there are detectable warnings. <i>Note: Detectable warnings must consist of truncated domes (raised bumps), which warn pedestrians who are blind that they are about to enter into traffic.</i></p> <p>ANSI 406.12-13-14, as amended; Abfd 303.02 (1)</p>	
9.	<p>(a) Other than curbs, the path of travel does not have abrupt changes in level that are over ¼-inch in height. Refer to the diagram on next page.</p> <p>ANSI 303; ADAAG 303</p>	
	<p>(b) If there is a change in level more than ½-inch in height, there is a ramp. <i>Please complete the RAMP CHECKLIST; page 7.</i></p> <p>ANSI 303; ADAAG 303</p>	
10.	<p>If a passenger loading zone is provided answer (a), (b), and (c). <i>If not, skip to #11.</i></p> <div data-bbox="483 1014 1081 1260" data-label="Diagram"> </div>	
	<p>(a) There is a 5-foot by 20-foot pedestrian aisle provided, parallel to the vehicle pull-up space. ANSI 503; ADAAG 503</p>	
	<p>(b) The pedestrian aisle and pull-up space is level (slope does not exceed 1:48). ANSI 403.3; ADAAG 403.3</p>	
	<p>(c) The pedestrian aisle and parking surface is stable, firm, and slip-resistant. ANSI 302.1; ADAAG 302</p>	
11.	<p>(a) The path of travel to the entrance is not banked or does not have a cross-slope greater than 1:48 (2%). ANSI 403.3; ADAAG 403.3</p> <p>(b) The grade or slope of the path of travel is 1:20 (5%) or better (1:22, 1:23, etc.). <i>Note: 1:20 means there is one inch of rise in vertical height for every 20 inches of run in horizontal length.</i></p> <p>ANSI 402.2; ADAAG 402</p>	
	<p>If the grade is steeper than 1:20 (1:19, 1:18), please complete the RAMP checklist, page 7.</p>	

CHANGES IN LEVEL

ANSI 303.3 Changes in level greater than 1/4 inch in height and not more than 1/2 inch maximum in height shall be beveled with a slope not steeper than 1:2.



Fig. 303.2
Vertical Changes in Level

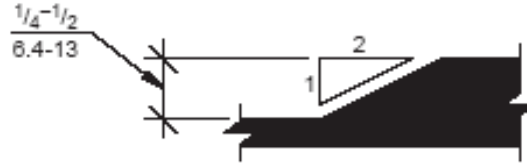


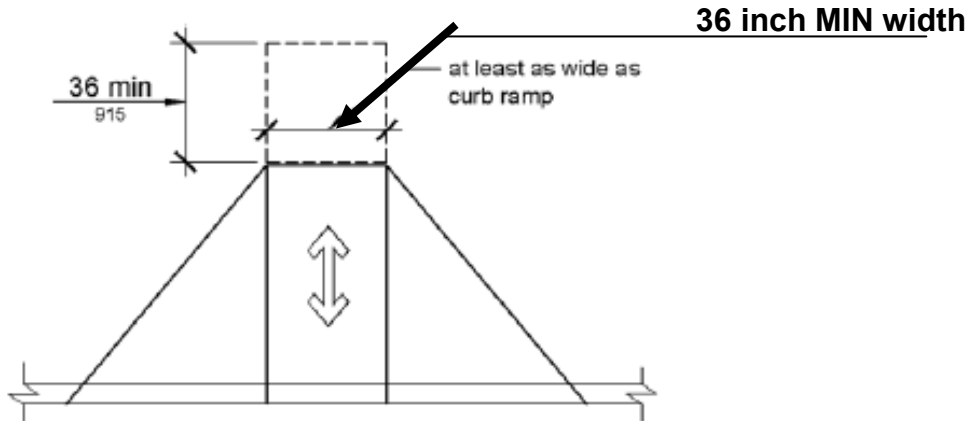
Fig. 303.3
Beveled Changes in Level

CURB RAMPS

ANSI 406.3 Sides of Curb Ramps. Where provided, curb ramp flares shall not be steeper than 1:10.

406.4 Width. Curb ramps shall be 36 inches wide minimum, exclusive of flared sides.

406.6 Location. Curb ramps and the flared sides of curb ramps shall be located so they do not project into vehicular traffic lanes, parking spaces, or parking space access aisles. Curb ramps at marked crossings shall be wholly contained within the markings, excluding any flared sides.



DETECTABLE WARNINGS

Abfd 303.03

(b) Clarifications of, and modifications to, ICC/ANSI A117.1 2003 shall be as follows:

- (1) The installation of curb ramps with detectable warnings whenever sidewalks and curbs are constructed, reconstructed, or repaired in conjunction with new construction or substantial remodeling.

ANSI-2003 406.12 (as amended by the State of NH)

Detect able Warnings at Curb Ramps and Raised Marked Crossings. Curb Ramps and marked crossings that are raised to the same level as the adjoining sidewalk shall be preceded by a 24-inch deep detectable warning complying with Section 705, extending the full width of the marked crossing.

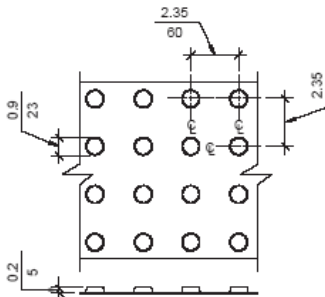
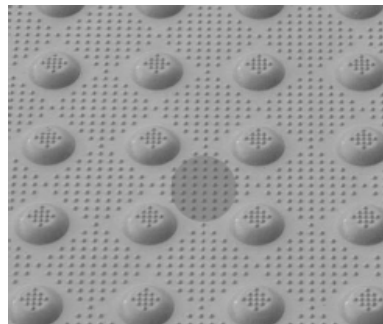
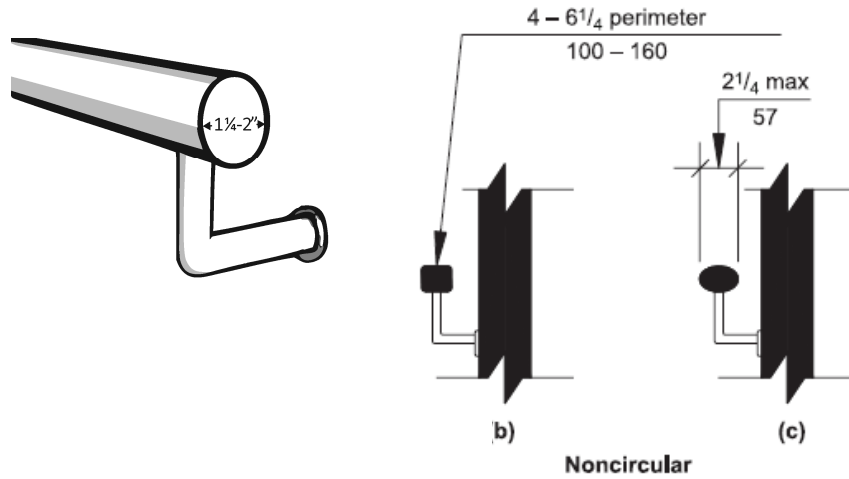


Fig. 705.3.1.1
Truncated Dome Size

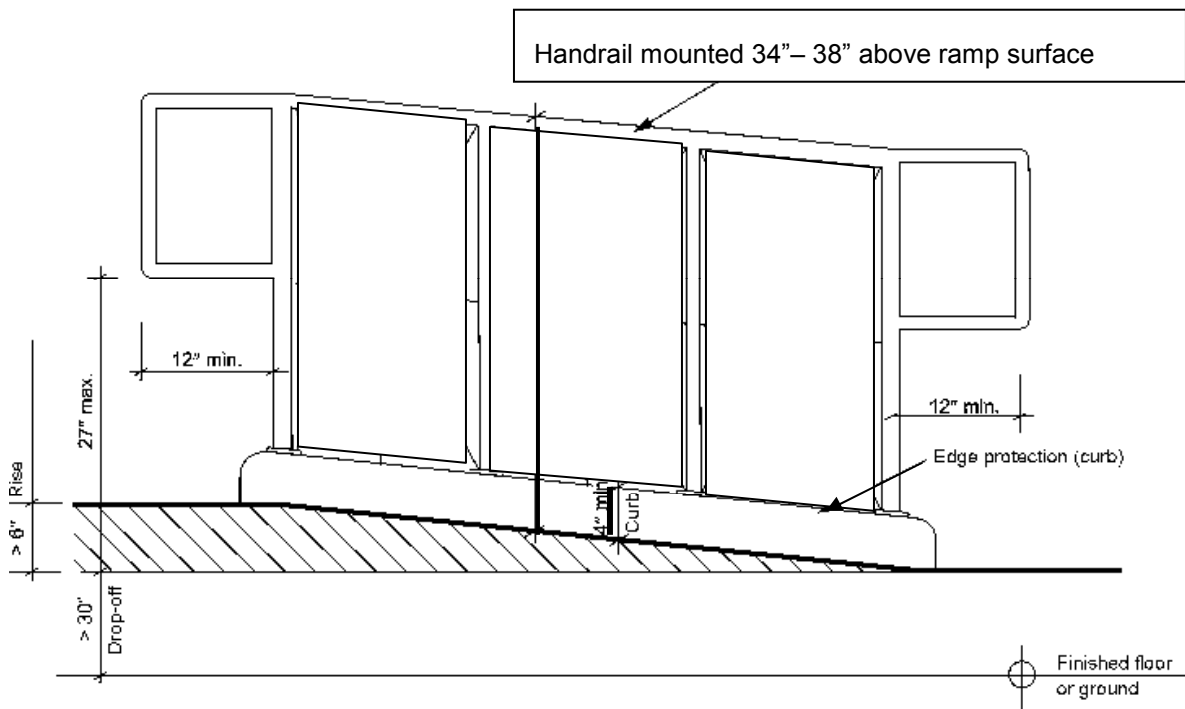


RAMPS CHECKLIST		✓
1.	(a) The slope of the ramp is not steeper than 1:12 . (1:10, 1:8, etc.) <i>Note: 1:12 means there is one inch of rise in vertical height for every 12 inches of run in horizontal length.</i> ANSI 405.2; ADAAG 405.2; ADAAG 405 for all ramp requirements	
	(b) The cross slope of the ramp surface is not steeper than 1:48. ANSI/ADAAG 405.3	
2.	The surface of the ramp is firm, stable and slip-resistant. ANSI/ADAAG 405.4 & 302.1	
3.	The clear width of the ramp, measured between handrails, is at least 36 inches. ANSI/ADAAG 405.5 <i>Please record the width of the ramp here:</i>	
4.	(a) At the bottom and the top of the ramp there is a level landing that is at least 60 inches long. ANSI/ADAAG 405.7 <i>Please record the width of landings here. Bottom: _____ Top: _____</i>	
	(b) The landing has a grade of no more than 1:48 in all directions. ANSI 405.7.1	
	(c) Where there is a change in direction in the ramp, and/or there is more than one inclined section, there is an intermediate landing that measures 60 inches long by 60 inches wide. ANSI/ADAAG 405.7 <i>Please record the dimensions of intermediate landing(s) here. Width: _____ Length: _____</i>	
5.	The maximum rise (vertical height) for each inclined section is no more than 30 inches, meaning each section is no longer than 30 feet. ANSI/ADAAG 405.6	
6.	If the rise of vertical height of the ramp is more than 6 inches, there are handrails on both sides of the ramp. ANSI/ADAAG 405.8 <i>If there are no handrails, skip to #8.</i>	
7.	(a) The handrails are sturdy and secure and do not rotate within their fittings. ANSI/ADAAG 505.9; ADAAG 505 for all handrail requirements	
	(b) The gripping surface of the handrails is continuous for the entire length of the ramp, including the length of any intermediate landings. ANSI/ADAAG 505.3	
	(c) The top of the gripping surface of the handrail is 34-38 inches above the surface of the ramp. ANSI/ADAAG 505.4;	
	(d) Circular handrails measure 1¼ - 2 inches in outside diameter. ANSI/ADAAG 505.7 <i>Refer to the diagram on next page.</i> <i>List the dimensions of non-circular handrails here:</i>	
	(e) The handrails are mounted to provide at least 2¼ inches clearance between the wall and the handrail. NFPA 101 7.2.2.4.4.5	
	(f) The handrails extend at least 12 inches beyond the top of the inclined portion of the ramp and 12 inches beyond the bottom of the inclined portion of the ramp. ANSI/ADAAG 505.10	
8.	If the ramp or the landing has a vertical drop-off on either side, the floor surface extends 12 inches beyond the handrail or a curb is provided. ANSI/ADAAG 405.9 <i>Refer to the diagram on next page.</i>	

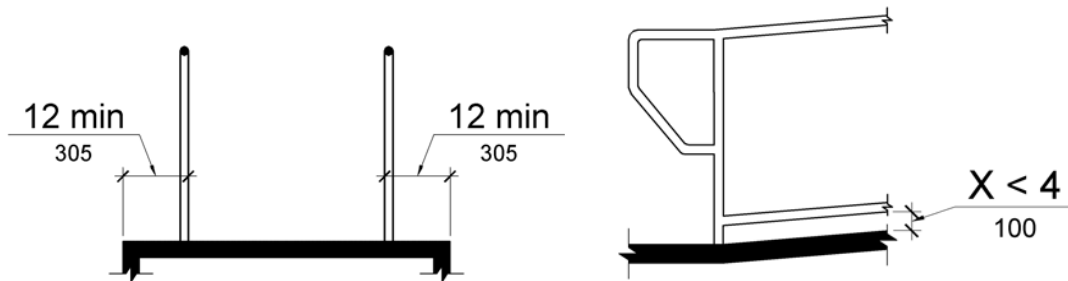
HANDRAIL CROSS SECTIONS



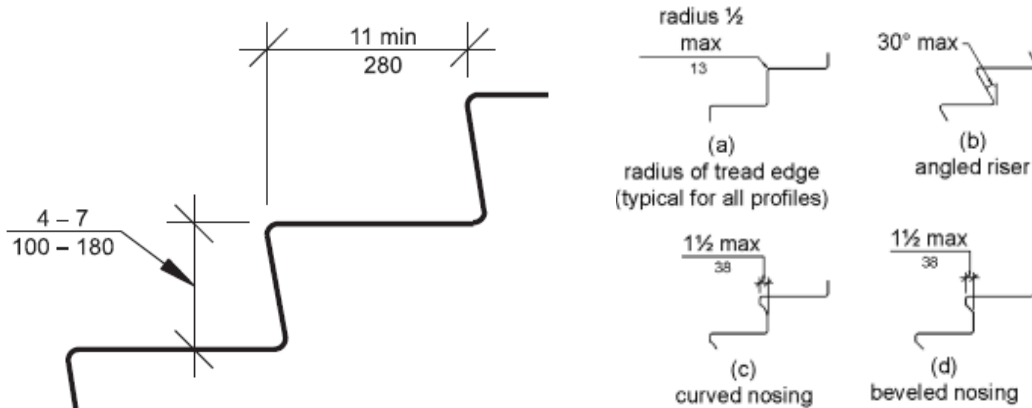
RAMP DETAILS



CURB OR BARRIER EDGE PROTECTION



STAIR CHECKLIST		✓
1.	There are handrails on both sides of the stair. If none, skip to #3. ANSI 504.6 & ANSI 505; ADAAG 504.6	
2.	(a) The handrails are sturdy and secure and do not rotate within their fittings. ANSI/ADAAG 505.9; ADAAG 505 for all handrail requirements	
	(b) The gripping surface of the handrails is continuous for the entire run of the stair, including the length of any intermediate landings. ANSI/ADAAG 505.6	
	(c) The top of the gripping surface of the handrail is 34 - 38 inches above the riser surface. ANSI/ADAAG 505.4	
	(d) Circular handrails measure 1¼ - 2 inches in outside diameter. ANSI/ADAAG 505.7 <i>List the dimensions of non-circular handrails here:</i>	
	(e) The handrails are mounted to provide at least 2¼ inches clearance between the wall and the handrail. NFPA 101, section 7.2.2.4.4.5	
	(f) The handrails extend 12 inches beyond the top and the bottom of the stairs. ANSI/ADAAG 505.10	
3.	(a) The steps (risers) are of the same height, depth, and width for the entire run of the stair. ANSI 504.2; ADAAG 504 for all stair requirements	
	(b) The height of the step (riser) is at least 4 inches but no more than 7 inches. ANSI/ADAAG 504.2 <i>Record riser height here:</i>	
	(c) The tread depth of each step is at least 11 inches. ANSI/ADAAG 504.2 <i>Record tread depth here:</i>	
	(d) The width of each step is at least 36 inches, measured between handrails. NFPA 101, section 7.2.2.2.1 <i>Record width here:</i>	
	(e) There are backs for each step, meaning there are no open risers. ANSI/ADAAG 504.3	



Accessible Entrances and Exterior Doors CHECKLIST



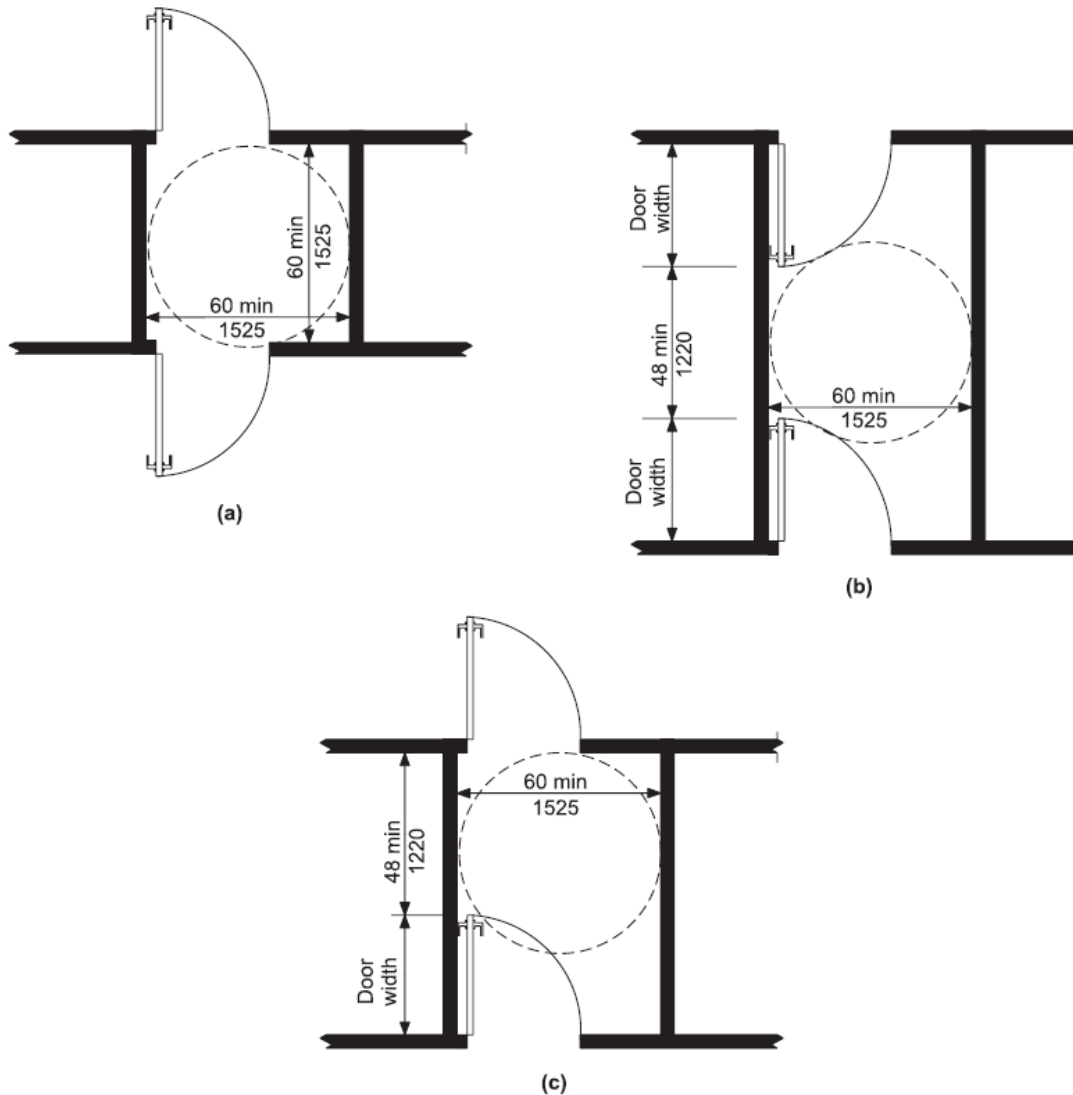
1.	<p>(a) There is at least one accessible entrance directly connected to the exterior accessible route. For facilities built after October 2007, if there is more than one public entrance, at least 60% of the public entrances are accessible. IBC 1104; ADAAG 206 (scroll to 206.4.1)</p> <p>(b) Where there are inaccessible entrances, there are signs clearly posted at each inaccessible entrance directing individuals to the nearest accessible entrance. IBC 3409.8.1; ADAAG 216 (scroll to 216.6)</p>	
2.	As now required by NH Amendment to IBC 1105 for new construction and alterations to entrances, at least one accessible public entrance is to be equipped with a power door opener. If a power door opener is provided, the control for the opener is in an accessible location, mounted no higher than 48 inches from the floor. ANSI 404.3	
3.	<p>(a) The ground in front of the door is level, meaning that the grade that does not exceed 1:48. ANSI 404.2.3.5; ADAAG 404.2.4.4 ADAAG 404 for all door requirements</p> <p>b.) For a door that pulls open, this area measures at least 60 inches in length. ANSI 404.2.3; ADAAG 404.2.4</p> <p style="text-align: center;"><i>For additional door clearances, refer to the diagrams on page 12.</i></p>	
4.	For a single door that pulls open, there is at least 18 inches of clear floor space outside the door on the handle side of the door. ANSI 404.2.3.1; ADAAG 404 .2.4	
5.	At least one door, or one side of a double leaf door, provides at least 32 inches clear passage width when the door is open 90 degrees. ANSI 404.2.2; ADAAG 404 .2.3	
6.	<p>For both sides of the door</p> <p>a.) The door hardware is usable with one hand without tight grasping, pinching, or twisting of the wrist, such as a lever or pull handle, or a panic bar. ANSI 404.2.6; ADAAG 404.2.7 <i>Refer to the diagrams on page 11.</i></p> <p>b.) The hardware is mounted between 34 and 48 inches from the floor. ANSI 404.2.6; ADAAG 404.2.7</p>	
7.	If there is a closer, meaning the door closes by itself, the door take at least 5 seconds to close. ANSI 404.2.7; ADAAG 404 .2.8	
8.	If there is a raised threshold, it is no higher than 1/2 inch at the door and is beveled on both sides. ANSI 404.2.4; ADAAG 404 .2.5	
9.	If there are doors in a series that must be opened one <i>after</i> the other, the clear floor space between the doors measures at least 48 inches in length plus the width of any door swinging into the space between the doors (plus at least 36 inches). ANSI 404.2.5; ADAAG 404 .2.6 <i>Refer to the diagrams on page 11.</i>	

10.	For the interior or second door of two doors in a series, the force required to operate the second door does not exceed five (5) pounds. ANSI 404.2.8; ADAAG 404.2.9	
-----	---	--

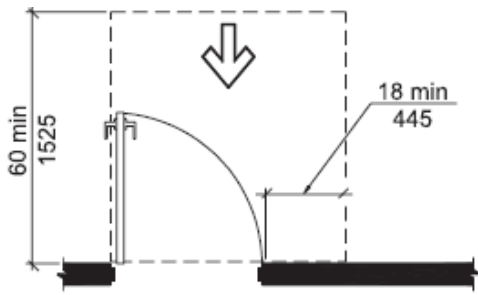
DOOR HARDWARE



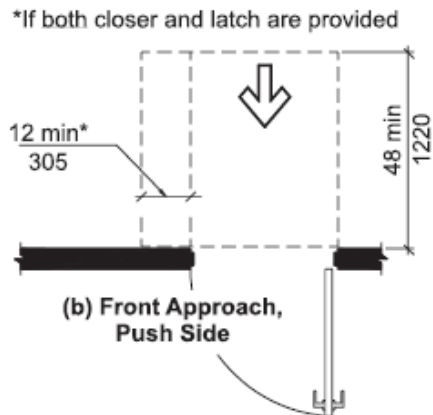
DOORS IN A SERIES



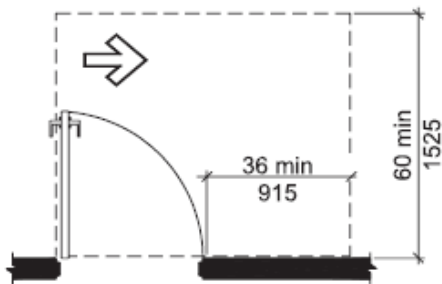
DOOR CLEARANCES



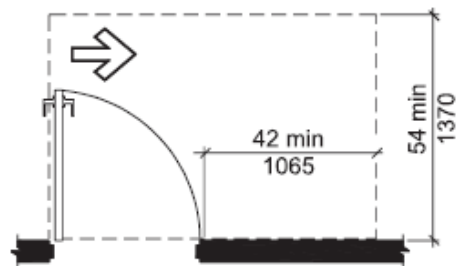
(a) Front Approach, Pull Side



(b) Front Approach, Push Side

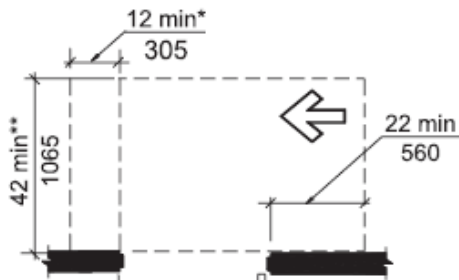


(c) Hinge Approach, Pull Side

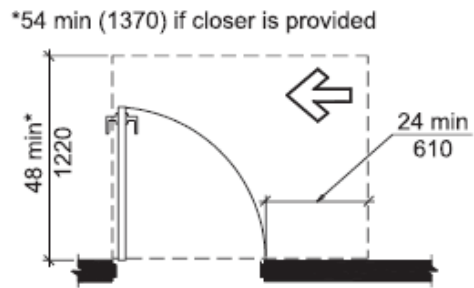


(d) Hinge Approach, Push Side

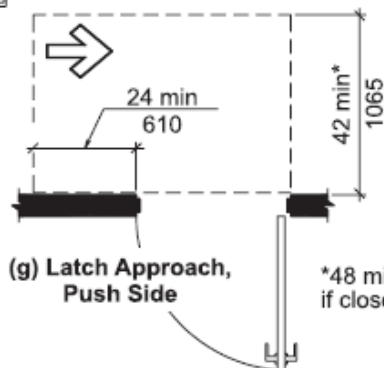
* If both closer and latch are provided
 ** 48 min (1220) if both closer and latch provided



(e) Hinge Approach, Push Side



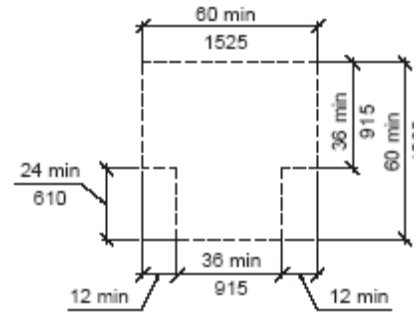
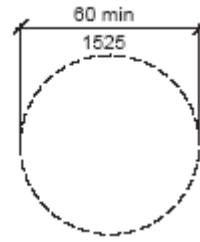
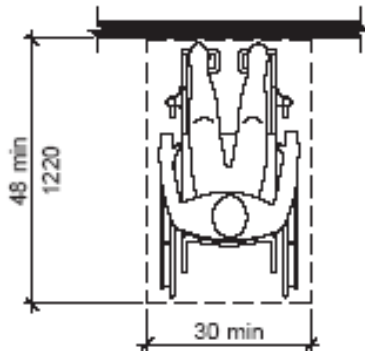
(f) Latch Approach, Pull Side



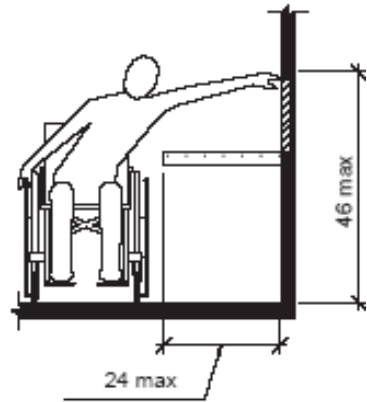
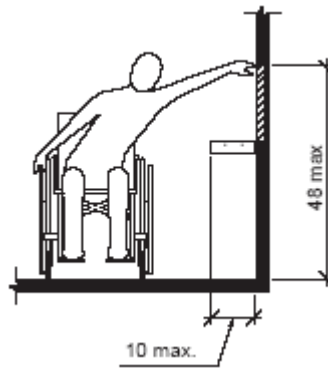
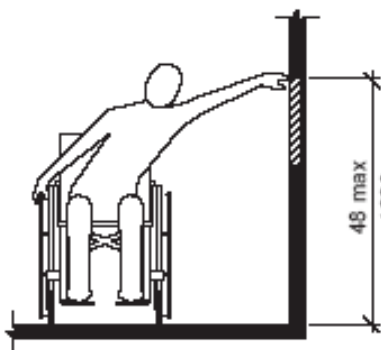
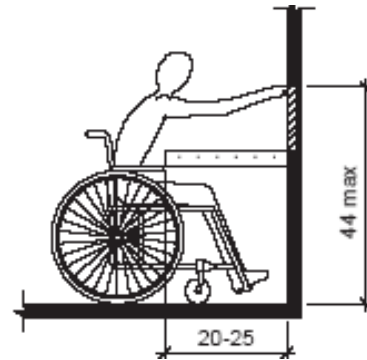
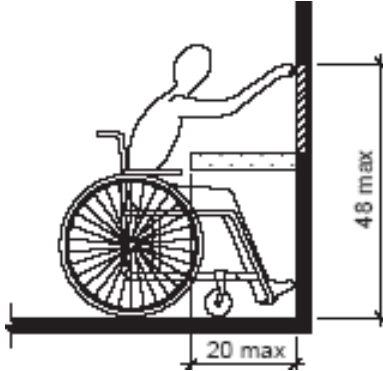
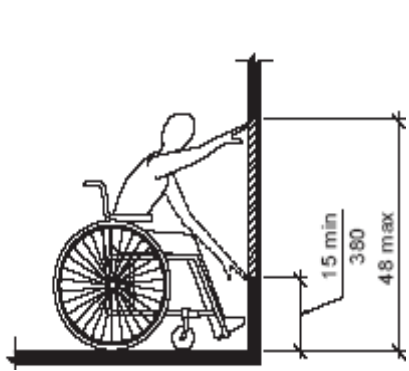
(g) Latch Approach, Push Side

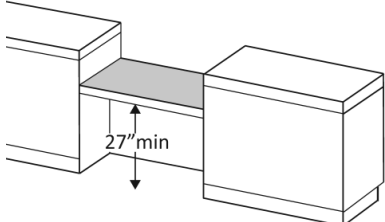
*48 min (1220) if closer is provided

MINIMUM CLEAR FLOOR SPACE



REACH RANGES



Accessible Reception – Service Counters		✓
1.	For a reception/service counter that is not used for writing, there is a 36-inch portion that is no higher than 36 inches from the floor. ANSI 904; ADAAG 904	
2.	<p>(a) For a counter where the surface is used for writing, there is a 36-inch long portion with 27 inches open space for knee clearance beneath the counter. ANSI 902; ADAAG 902</p>  <p>(b) The top of the counter is at least 28 but no higher than 34 inches above the floor. ANSI 902; ADAAG 902</p> <p>(c) The minimum clear floor space of 30 inches by 48 inches is provided, centered in front of the counter. <i>Refer to the diagram on page 13.</i> ANSI 902; ADAAG 902</p>	

Interior Accessible Path of Travel CHECKLIST		✓
1.	<p>(a) There is an accessible route that connects the accessible entrance to all interior areas (including all public areas, restrooms, and service or program areas). ANSI 402; ADAAG 402</p> <p>(b) The accessible route is at least 36 inches wide. ANSI 403.5; ADAAG 403.5.1</p>	
2.	<p>(a) The walking surface is firm, stable and slip-resistant. ANSI 302.1; ADAAG 302.1</p> <p>(b) The accessible route is free of abrupt changes in level such as raised floorboards, thresholds, etc., over ½-inch in height. <i>Note: Changes in level between ¼ inch and ½ inch must be beveled.</i> ANSI 403.4; ADAAG 403</p> <p>(c) If there is a change in level more than ½-inch in height, there is a ramp. ANSI 303; ADAAG 303</p>	
3.	<p>Does the route from the entrance throughout the building (including all public areas, restrooms, and service areas, etc.) have any changes in floor level requiring the use of a ramp, stair, lift or elevator? CIRCLE ONE: YES or NO</p> <p><i>If Yes with a RAMP, complete the RAMPS CHECKLIST, page 7.</i></p> <p><i>If Yes with a STAIR, complete the STAIR CHECKLIST, page 9.</i></p> <p><i>If Yes with a LIFT, complete the PLATFORM LIFTS CHECKLIST, page 15.</i></p> <p><i>If Yes with an ELEVATOR, complete the ELEVATOR CHECKLIST, page 15.</i></p>	

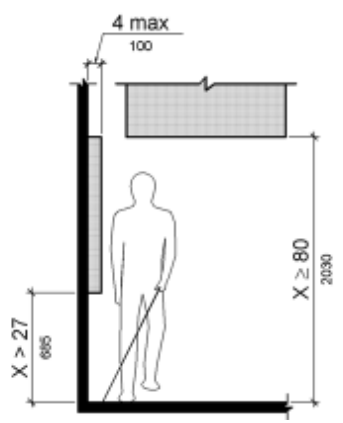
PLATFORM LIFTS CHECKLIST - ANSI / <u>ADAAG 410</u>		✓
1.	The lift is operational at the time of the survey.	
2.	Assistance is not required to enter and exit the lift.	
3.	Assistance is not required to operate the lift.	
4.	There is a way to notify authorities that assistance is needed to use the lift prior to entering.	
5.	There is a way to notify authorities that assistance is needed once in the lift with the door closed.	
6.	The change in level from the floor to the lift surface is ramped or beveled.	
7.	The clear floor space of the platform lift is at least 30 inches by 48 inches.	
8.	Controls and operating mechanisms are mounted no more than 48 inches from the lift platform surface.	
9.	The controls or operating mechanisms are usable with one hand without grasping, pinching, or twisting.	

ELEVATOR CHECKLIST - ANSI / <u>ADAAG 407</u> See also LULA Elevators ADAAG 408		✓
1.	The elevator is functioning at the time of the survey.	
2.	The elevator call buttons are mounted at 42 inches on-center above the floor in a location that is easy to access.	
3.	The elevator door has a clear opening of at least 36 inches.	
4.	The interior of the elevator car has one of these clear floor space requirements: Door on center - 51" deep x 80" wide or 60" x 60" Door off center - 80" deep x 54" wide or 51" deep x 68" wide. <i>If other, list dimensions here:</i>	
5.	The highest control buttons in the elevator cab are mounted no more than 48 inches from the floor.	
6.	There are raised letters and Braille characters used to identify each floor button and each control.	
7.	There are signs mounted on both sides of the elevator hoist-way door opening, centered at 60 inches above the floor that designate the floor with 2-inch minimum-height raised letters and Braille characters.	
8.	There is an emergency communication system provided inside the elevator with both audible and visual features.	
9.	There are audible tones at the elevator call button location that signify a call has been registered.	
10.	The interior of the elevator car is equipped with audible tones that: (a) Sound once for up direction. (b) Sound twice for down direction.	

Accessible Interior Path of Travel - Obstacles



1. Objects that protrude into the path of travel such as fire extinguishers, signs, drinking fountains, potted plants, furniture, etc., extend less than 4 inches into the path of travel.
If NO, answer #2 (a) and 2(b), and #3. If YES, skip to #4.

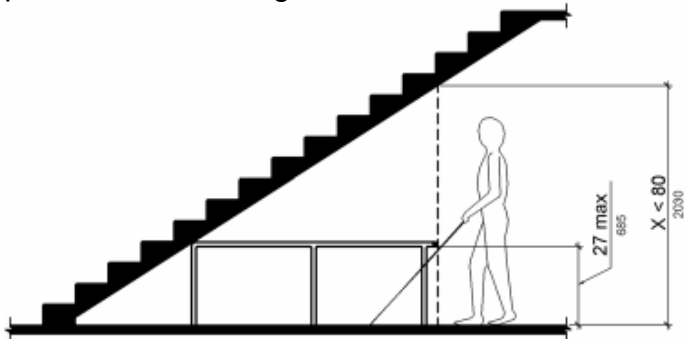


ANSI 307.2; [ADAAG 307](#)

2. For any protruding objects they are:
 (a) Mounted lower than 27 inches from the floor.
 (b) Mounted higher than 80 inches from the floor.

3. If NO to #2a or #2b, can the object(s) be removed or can the route be changed to avoid the object(s)?
If NO, explain:

4. If there any open staircases along these routes, there are barriers to prevent a person from walking under the stairs.

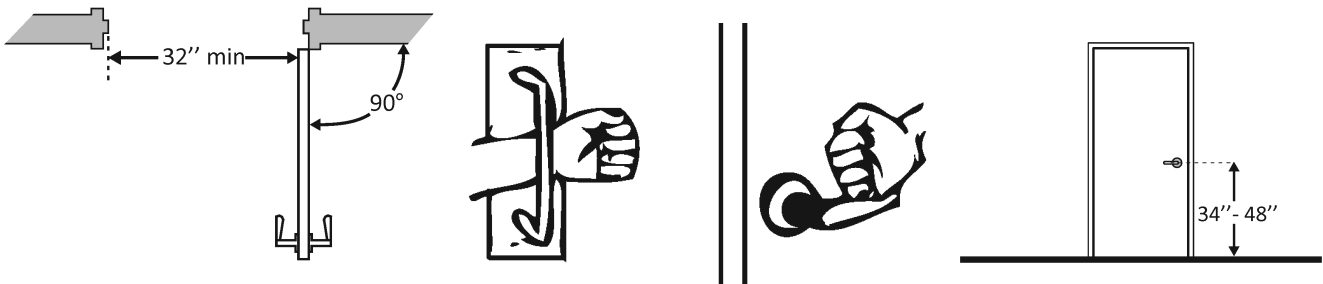


5. Temporary carpets or mats are firmly secured.
 ANSI / [ADAAG 302.2](#)

6. Carpets or mats are no thicker than 1/2 inch.
 ANSI / [ADAAG 302.2](#)



Accessible Interior Path of Travel and Interior Doors		✓
1.	At least one door, or one side of a double leaf door, provides at least 32 inches clear passage width when the door is open 90 degrees. ANSI 404.2.2; ADAAG 404 for all door requirements	
2.	If there is an automatic door opener (not required), the control for the opener is in an accessible location and it is mounted no higher than 48 inches from the floor. ANSI 404.3	
3.	For both sides of the door, the hardware is operable by a single hand without tight grasping, pinching, or twisting of the wrist (Lever or pull handle, or a panic bar). ANSI 404.2.6 <i>Refer to the diagrams below.</i>	
4.	For both sides of the door, the hardware is mounted between 34 and 48 inches from the floor. ANSI 404.2.6 <i>Refer to the diagram below.</i>	
5.	For a single door that pulls open, there is clear maneuvering floor space in front of each door and at least 18 inches of clear floor space outside the door on the handle side of the door. ANSI 404.2.3.1 <i>Refer to the diagrams on page 12.</i>	
6.	No more than 5 pounds force to push or pull open the door. <i>Note: Fire doors must comply with NFPA 101.</i> ANSI 404.2.8	
7.	If there is a closer, meaning the door closes by itself, the door takes at least 5 seconds to close. ANSI 404.2.7	
8.	If there are doors in a series that must be opened one <i>after</i> the other, the clear floor space between the doors measures at least 48 inches in length plus the width of any door swinging into the space between the doors (at least 7 feet). ANSI 404.2.5 <i>Refer to the diagrams on page 11.</i>	
9.	If there is a raised threshold, it is no higher than 1/2 inch at the door and is beveled on both sides. ANSI 404.2.4	



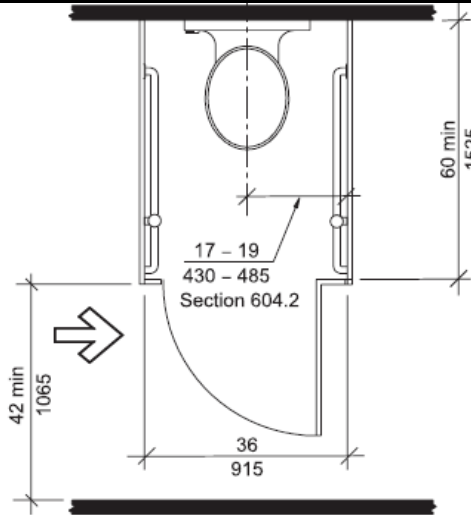
Accessible Toilet Rooms Checklist ANSI / ADAAG 603		✓
1.	If there are audible (horn or speaker) fire alarms in the building, there are visual (strobe) alarms in all toilet rooms. ADAAG 215	
2.	There is an accessible route to the toilet room. IBC 1104.2	
3.	There is appropriate signage identifying the restroom (Unisex, Male, or Female) with the wheelchair symbol, mounted on the exterior wall, adjacent to the door handle, with Braille and raised letters and symbols. ANSI / ADAAG 703	
4.	The clear width for the door opening is at least 32 inches, measured when the door is open 90 degrees. ANSI 404.2.2; ADAAG 404 for all door requirements	
5.	If there is a raised threshold, it is no higher than ½ inch at the door and is beveled on both sides. ANSI 404.2.4	
6.	If there is an automatic door opener (not required), the control is in an accessible location and it is mounted no higher than 48 inches from the floor. ANSI 404.3	
7.	For both sides of the door (a) The hardware is operable by a single hand without tight grasping, pinching, or twisting of the wrist (lever or pull handle). ANSI 404.2.6 <i>Refer to the diagrams on page 11.</i>	
	(b) The hardware is mounted between 34 and 48 inches from the floor. ANSI 404.2.6	
8.	For a single door that pulls open, there is clear maneuvering floor space in front of each door and at least 18 inches of clear floor space beyond the door on the handle side of the door. ANSI 404.2.4.1 <i>Refer to the diagrams on page 12.</i>	
9.	(a) To push or pull open the accessible door, no more than 5 pounds force is needed. ANSI 404.2.8	
	(b) If there is a closer, meaning the door closes by itself, the door take at least 5 seconds to close. ANSI 404.2.7	
10.	If there are doors in a series that must be opened one <i>after</i> the other, the clear floor space between the doors measures at least 48 inches in length plus the width of any door swinging into the space between the doors (plus at least 36 inches). ANSI 404.2.5 <i>Refer to the diagrams on page 11.</i>	
11.	For single-use toilet rooms: If the door swings into the toilet room, there is clear floor space provided beyond the swing of the door that measures at least 30 x 48 inches. ANSI / ADAAG 603.2.3 <i>Please record the dimensions of the toilet room here:</i>	

For more details, refer to the single-use toilet room plan, found on the last page of this document.

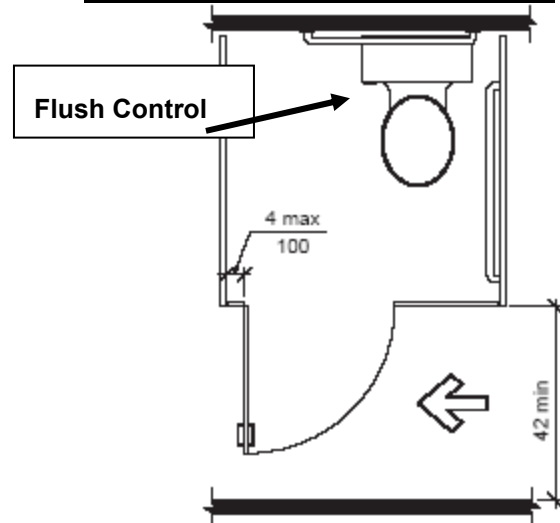
If there are toilet stalls provided, answer items #1 – #6.		✓
<u>Total number of stalls</u>		<u>Number of Accessible Stalls</u>
MALE =		MALE =
FEMALE =		FEMALE =
1.	There is a clear path of travel to the accessible stall that is at least 36 inches wide. ANSI / ADAAG 403	
2.	The clear width for the accessible stall door opening is at least 32 inches. ANSI 404.2.2; ADAAG 404 for all door requirements	
3.	The accessible stall door opening pressure is 5 pounds or less. ANSI 404.2.8	
4.	(a) The accessible stall door lock is operable by a single hand and there are door pull handles on both sides of the stall door. ANSI / ADAAG 309	
	(b) The accessible stall door hardware, and, if available, the coat hook, are mounted no higher than 48 inches from the floor. ANSI / ADAAG 308	
5.	If the accessible stall door has automatic closing hinges, the door takes at least 5 seconds to close. ANSI 404.2.7	
6.	If the total number of water closets (toilets) and urinals (where provided) is 6 or more, including the accessible stall, there is also an <i>ambulatory accessible</i> stall. <i>If there are less than 6 fixtures, skip.</i> IBC 1109.2.2; ADAAG 213.3.1	
	(a) The stall is at least 36 inches wide and at least 60 inches deep. ANSI 604.9/ ADAAG 604.8.2	
	(b) The door does not swing into the stall.	
	(c) There are grab bars installed on both sides of the water closet.	
	(d) The centerline of the water closet is 17-19 inches from each side wall.	
	(e) The dispenser is mounted 7- 9 inches forward of edge of the toilet bowl.	

GRAB BARS

Ambulatory Accessible Stalls



Toilet Compartment Doors



Water Closet (Toilet) Elements		✓
1.	The distance from the centerline of the water closet to the side wall is 16-18 inches. ANSI/ADAAG 604 for all water closet requirements	
2.	The height of the toilet seat is between 17 and 19 inches from the floor. ANSI 604.4	
3.	The water closet flush control is located on the open side of the room. ANSI 604.6 <i>Refer to the diagram on next page.</i>	
4.	The toilet paper dispenser is mounted 7- 9 inches forward of edge of the toilet bowl. ANSI 604.7 <i>Refer to the diagram on next page.</i>	
5.	(a) The clear floor space from the centerline of the water closet to any other fixture along the same wall is at least 42 inches in length. ANSI 604.3.1	
	(b) The clearance at the water closet measured perpendicular to the side wall is at least 60 inches. <i>Refer to the diagram on next page.</i>	
	(c) The clearance at the water closet measured perpendicular to the rear wall is at least 56 inches. <i>Refer to the diagram on next page.</i>	
6.	(a) There is one horizontal side wall grab bar mounted 33-36 inches above the floor that is 42 inches long, mounted no more than 12 inches away from the rear wall, extending at least 54 inches from the rear wall. ANSI 604.5.1 <i>Refer to the diagrams below.</i>	
	(b) For <u>new</u> water closets (8/17/2007), there is a vertical side wall grab bar that is at least 18 inches long, mounted with the bottom of the bar located between 39 and 41 inches above the floor, and with the centerline of the bar located between 39 and 41 inches from the rear wall. ANSI 604.5.1 <i>Refer to the diagrams below.</i>	
	(c) There is one horizontal rear wall grab bar that is 36 inches long, with 12 inches of length of that bar provided on the transfer side of the water closet. ANSI 604.5.2 <i>Refer to the diagrams below.</i>	

ANSI GRAB BAR LOCATIONS

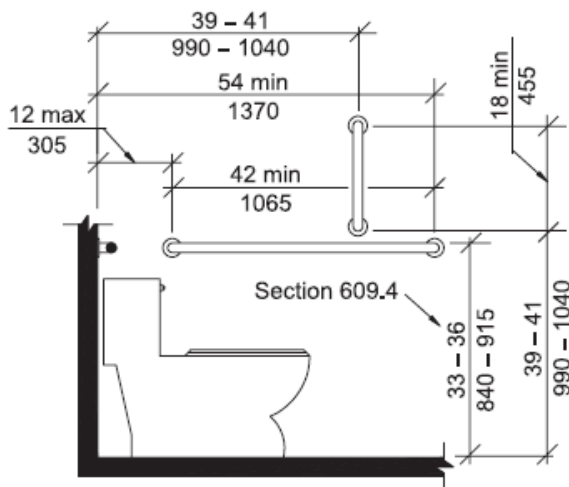


Fig. 604.5.1
Side Wall Grab Bar for Water Closet

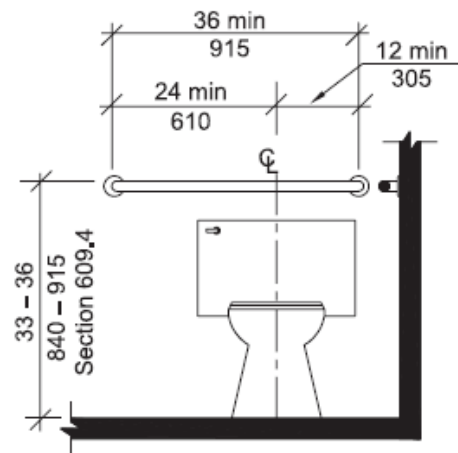
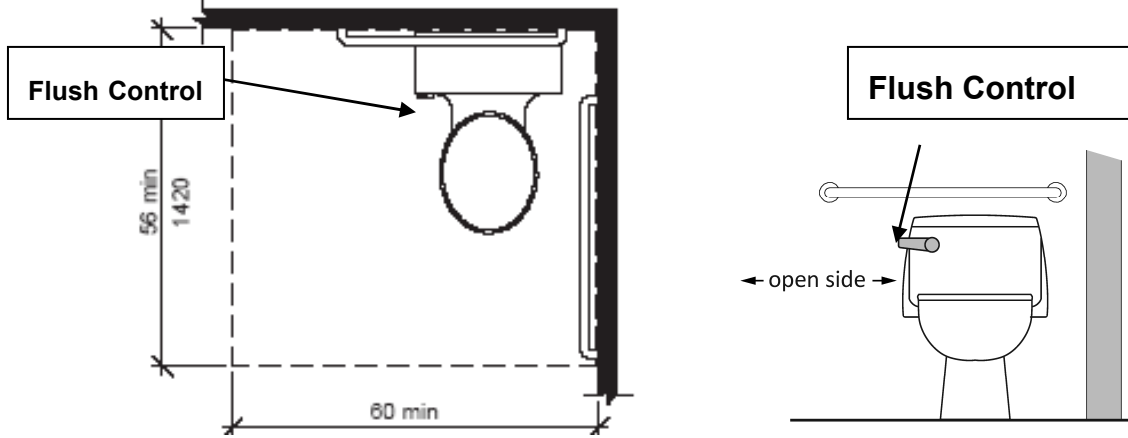
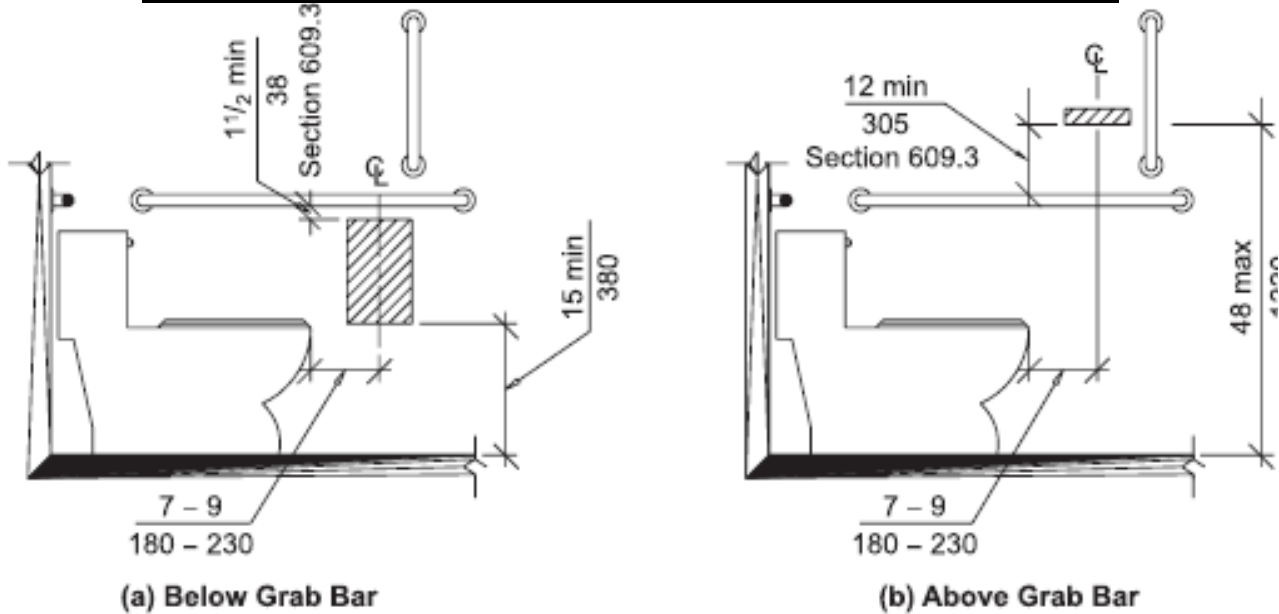


Fig. 604.5.2
Rear Wall Grab Bar for Water Closet

ANSI WATER CLOSET CLEAR FLOOR SPACE



ANSI WATER CLOSET DISPENSER LOCATIONS

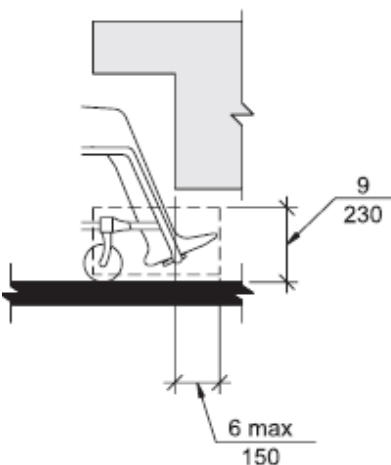


Accessible Urinals – ANSI / ADAAG 605		✓
1.	If there are two or more urinals provided, at least one urinal is accessible. IBC 1109.2 (Exception 4); ADAAG 213.3	
2.	The rim is a maximum of 17 inches above the floor.	
3.	There is clear floor space measuring 30 inches by 48 inches provided for a forward approach.	
4.	The flush control is mounted no more than 44 inches above the floor.	

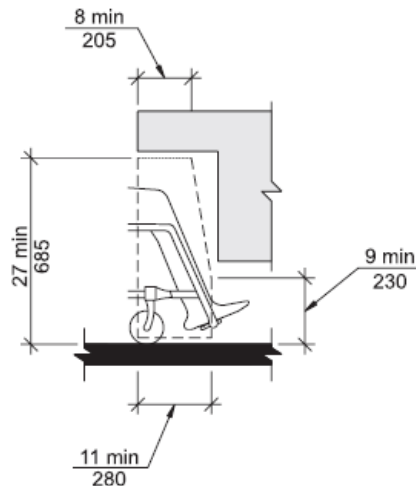
Accessible Lavatory (Sink) Elements		✓
1.	There is clear floor space that is at least 30 inches wide by 48 inches long, provided for a forward approach. <i>Note: 14-17 inches of the 48 inches may be part of the knee and toe clearance beneath the lavatory.</i> ANSI 606.2; ADAAG 606 for all lavatory requirements	
2.	There is knee clearance of at least 27 inches provided from the floor underneath the lavatory to the bottom of the sink bowl. ANSI 606.2 <i>Refer to the diagrams below.</i>	
3.	The top of lavatory is no higher than 34 inches from the floor. ANSI 606.3 <i>Refer to the diagrams below.</i>	
5.	The pipes beneath the lavatory are insulated. ANSI 606.6	
6.	The lavatory faucets are operable by a single hand (paddle or lever type faucets). ANSI 606.7; ANSI / ADAAG 309	
7.	(a) All dispensers are mounted no higher than 48 inches from the floor. ANSI / ADAAG 308 <i>Refer to the diagrams on page 13.</i>	
	(b) The control parts of dispensers are usable with one hand and do not require grasping, pinching, or twisting of the wrist. ANSI / ADAAG 309	
Note of caution: <i>Wall-mounted objects lower than 80 inches from the floor that are 12 inches or less in front of the lavatory interfere with the "head" clearance of a person using a wheelchair and could cause personal injury and/or property damage.</i>		
8.	Where a mirror is provided, the bottom edge of the reflecting surface is no higher than 40 inches above the floor; ANSI 603.3	

LAVATORY CLEARANCES

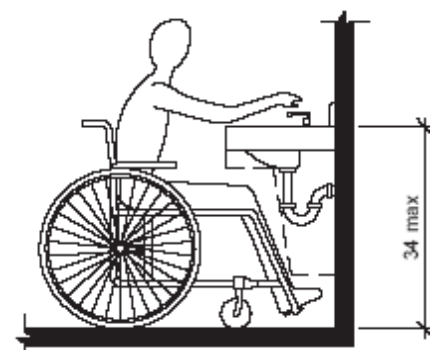
Toe Clearance



Knee Clearance



Lavatory Height

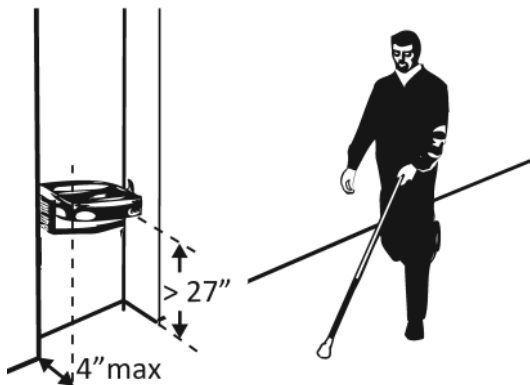


Where Drinking Fountains Are Provided

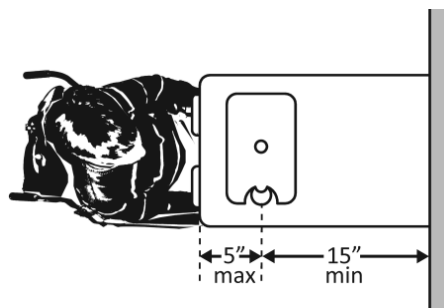
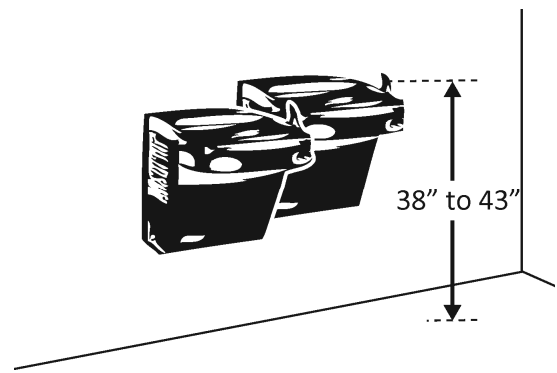
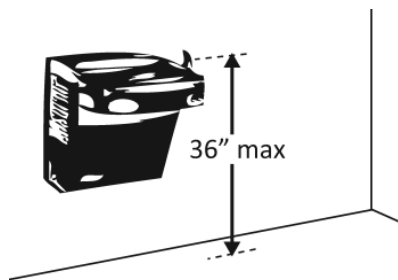
ANSI / [ADAAG 602](#)




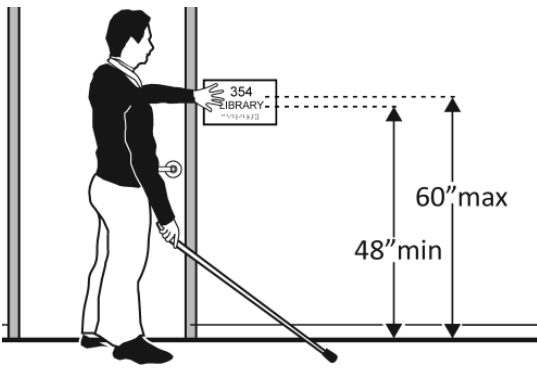
1.	The minimum clear floor space of 30 inches by 48 inches is provided, centered in front of the fountain. <i>Refer to the diagrams below.</i>	
2.	The spout is no higher than 36 inches from the floor.	
3.	If the water fountain is open beneath, it is either recessed or, if it protrudes more than 4 inches into the path of travel, a rubber mat has been placed under the water fountain to provide a touch-on-cane detectable warning. <i>Refer to the diagram and photograph below.</i>	



Rubber Mat



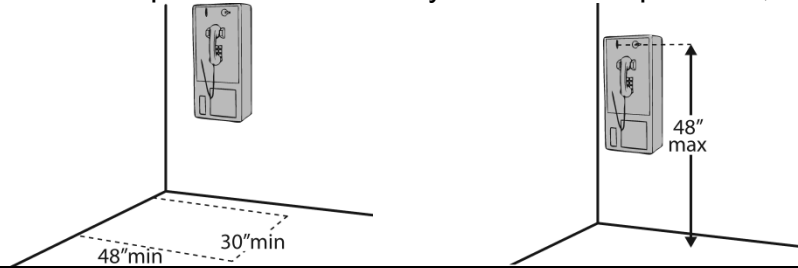
Where Fire Alarms and/or Fire Extinguishers Are Provided <u>ADAAG 215</u> and ANSI / <u>ADAAG 702</u>		✓
1.	<p>If there are audible (horn or speaker) fire alarms in the building, there are visual (strobe) alarms in all toilet rooms, all public-use areas, and all employee common-use areas.</p> <div style="text-align: right;">  </div>	
2.	<p>(a) Where manual pull stations are provided, they are located within reach range, 15-48 inches from the floor.</p> <p style="text-align: right;"><i>Refer to the diagrams on page 13.</i></p> <p>(b) The manual pull station is operable by a single hand and does not require grasping or pinching, or twisting of the wrist.</p>	
3.	<p>(a) Where provided, fire extinguishers that are wall-mounted are located within reach range, 15-48 inches from the floor.</p> <p style="text-align: right;"><i>Refer to the diagrams on page 13.</i></p> <p>(b) Fire extinguishers that are wall-mounted do not protrude more than 4 inches into the path of travel.</p>	

Where Room Signs Are Provided <u>ADAAG 216</u> and ANSI / <u>ADAAG 703</u>		✓
1.	<p>All permanent rooms where the use is not likely to change, such as conference and meeting rooms, courtrooms, toilet rooms, etc., have signs with Braille and raised letters and symbols posted on the wall adjacent to the handle side of the door. Exit signs are included in this requirement.</p> <div style="text-align: center;">  </div>	
2.	Where room numbers are posted, signs with Braille numbers are also provided.	

Where Public Telephones Are Provided - ANSI / [ADAAG 704](#)



1. Clear floor space of 30 inches by 48 inches is provided, centered on the telephone.

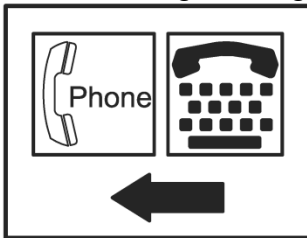


2. All operable parts are located no higher than 48 inches from the floor.
Refer to the diagrams on page 13.

3. There is a volume control switch.



4. There is a sign noting that a TTY is available.



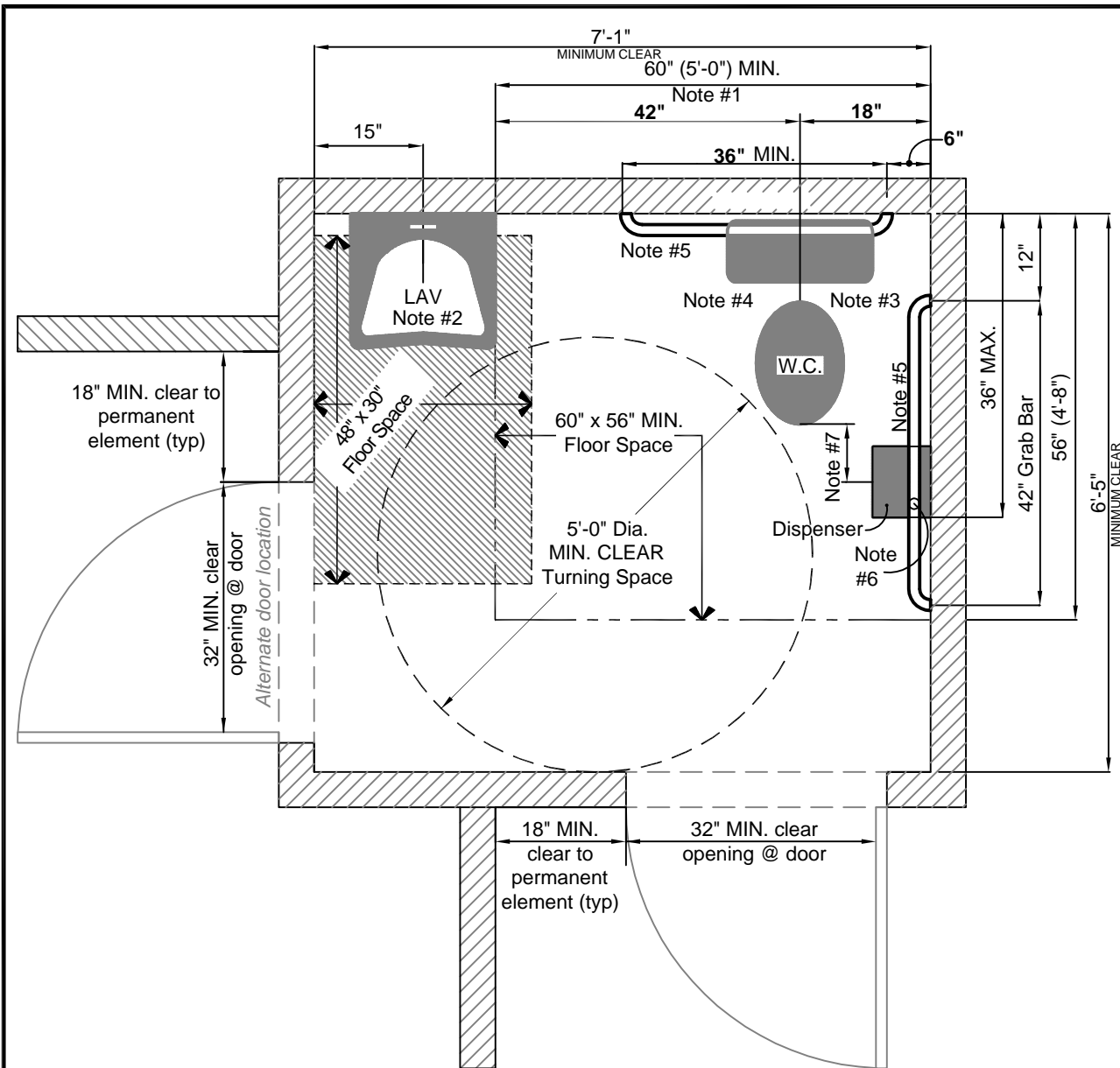
Employee Break Rooms with Kitchens
ANSI / [ADAAG 804](#)



1. Where a kitchen or kitchenette is provided with a sink, the top of the sink is no higher than 34 inches from the floor and there is clear floor space that is at least 48 inches long, parallel to and centered on the sink that is also at least 30 inches wide.

2. If a stove or cook top is also provided, then there is a clear floor space that is at least 30 inches wide by 48 inches long centered on the sink, with at least 27 inches clearance beneath the sink.

Refer to Accessible Lavatories (Sink) Elements, page 22.



Room dimensions are **MINIMUM** to INSIDE finished wall surfaces for this *preferred* design

- Note #1:** Finish wall to edge of lavatory or other obstruction. NO OTHER FIXTURE OR OBSTRUCTION SHALL BE WITHIN THIS SPACE. (60" wide X 56" deep) (ANSI 604.3)
- Note #2:** Any manufacturer's standard wall hung lavatory may be used. Elongated style lavatories are not recommended. Installation must comply with ANSI 606.
- Note #3:** Any manufacturer's wall hung or floor mounted accessible toilet may be used. Seat height to be @ 19" AFF.
- Note #4:** Install flush valve control on the room side of the water closet (ANSI 604.6)
- Note #5:** Install horizontal grab bars 33" to 36" above finished floor. (ANSI 609.4)
- Note #6:** Install one vertical side wall grab bar; at least 18" long, mounted with the bottom of the bar located between 39" and 41" AFF; and with center line of bar located between 39" and 41" from rear wall.
- Note #7:** Center line of toilet paper dispenser shall be 7"-9" in front of the water closet, mounted 1 1/2" MIN below grab bar, or 12" MIN above grab bar; between 15"-48" AFF (ANSI 604.7). Far edge of dispenser to be no more than 36" from rear wall. (ADAAG fig. 30(d))
- Note #8:** All dispensers must comply with ANSI 309.

Accessible Single Occupant Toilet Room

PREFERRED Design (based on ANSI A117.1, 2003 and ADAAG, 1994)

**Approved by the Architectural
Barrier-Free Design Committee
on January 20, 2009**