

KUA - Sheep Barn

Legend

- 📍 Kimball Union Academy
- 🏠 Sheep Barn
- 📍 United States Postal Service



Google Earth

Sheep Barn

Main St

600 ft

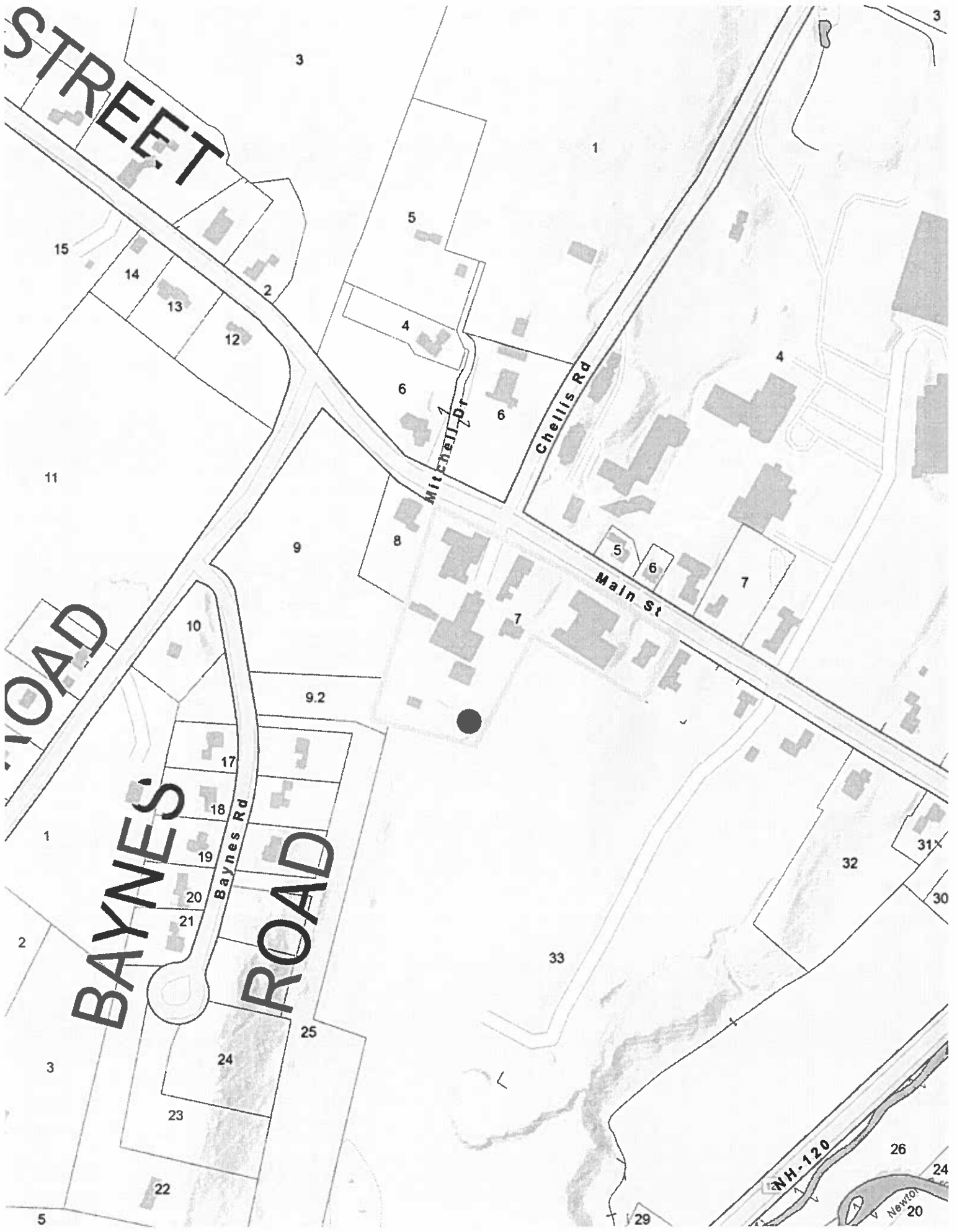
Kimball Union Academy

Green Mountain

STREET

ROAD

BAYNES ROAD





A. GENERAL NOTES

1. ALL STRUCTURAL STEEL SHALL CONFORM TO THE "STEEL" SPECIFICATION, DIMENSIONS, AND THE B.C.P.S.
2. BENDING, ROOFING, AND OTHER REQUIREMENTS, DETAILS BY ARCHITECT.

B. FOUNDATION RELATED BATHWORK

1. FOUNDATION SHALL BE CONSTRUCTED TO SUPPORT THE STRUCTURE AND SHALL BE CONSTRUCTED TO RESIST THE EFFECTS OF SOIL MOISTURE, FLOODING, AND OTHER FOUNDATION RELATED BATHWORK. THE FOUNDATION SHALL BE CONSTRUCTED TO RESIST THE EFFECTS OF SOIL MOISTURE, FLOODING, AND OTHER FOUNDATION RELATED BATHWORK. THE FOUNDATION SHALL BE CONSTRUCTED TO RESIST THE EFFECTS OF SOIL MOISTURE, FLOODING, AND OTHER FOUNDATION RELATED BATHWORK.

C. CAST-IN-PLACE CONCRETE

1. CONCRETE SHALL BE CAST IN PLACE AND SHALL BE CONSTRUCTED TO RESIST THE EFFECTS OF SOIL MOISTURE, FLOODING, AND OTHER FOUNDATION RELATED BATHWORK. THE CONCRETE SHALL BE CONSTRUCTED TO RESIST THE EFFECTS OF SOIL MOISTURE, FLOODING, AND OTHER FOUNDATION RELATED BATHWORK.

D. CONCRETE REINFORCEMENT

1. ALL REINFORCEMENT SHALL BE CAST IN PLACE AND SHALL BE CONSTRUCTED TO RESIST THE EFFECTS OF SOIL MOISTURE, FLOODING, AND OTHER FOUNDATION RELATED BATHWORK. THE REINFORCEMENT SHALL BE CONSTRUCTED TO RESIST THE EFFECTS OF SOIL MOISTURE, FLOODING, AND OTHER FOUNDATION RELATED BATHWORK.

E. CONCRETE FORMWORK

1. CONCRETE FORMWORK SHALL BE CONSTRUCTED TO RESIST THE EFFECTS OF SOIL MOISTURE, FLOODING, AND OTHER FOUNDATION RELATED BATHWORK. THE FORMWORK SHALL BE CONSTRUCTED TO RESIST THE EFFECTS OF SOIL MOISTURE, FLOODING, AND OTHER FOUNDATION RELATED BATHWORK.

F. STRUCTURAL STEEL

1. ALL STRUCTURAL STEEL SHALL CONFORM TO THE "STEEL" SPECIFICATION, DIMENSIONS, AND THE B.C.P.S.
2. BENDING, ROOFING, AND OTHER REQUIREMENTS, DETAILS BY ARCHITECT.

G. WOOD FRAMING NOTES

1. ALL WOOD FRAMING SHALL CONFORM TO THE "WOOD" SPECIFICATION, DIMENSIONS, AND THE B.C.P.S.
2. BENDING, ROOFING, AND OTHER REQUIREMENTS, DETAILS BY ARCHITECT.

H. STRUCTURAL STEEL (CONT.)

1. ALL STRUCTURAL STEEL SHALL CONFORM TO THE "STEEL" SPECIFICATION, DIMENSIONS, AND THE B.C.P.S.
2. BENDING, ROOFING, AND OTHER REQUIREMENTS, DETAILS BY ARCHITECT.

I. WOOD FRAMING NOTES

1. ALL WOOD FRAMING SHALL CONFORM TO THE "WOOD" SPECIFICATION, DIMENSIONS, AND THE B.C.P.S.
2. BENDING, ROOFING, AND OTHER REQUIREMENTS, DETAILS BY ARCHITECT.

BASIS OF DESIGN

1. BASIS OF DESIGN
2. BASIS OF DESIGN

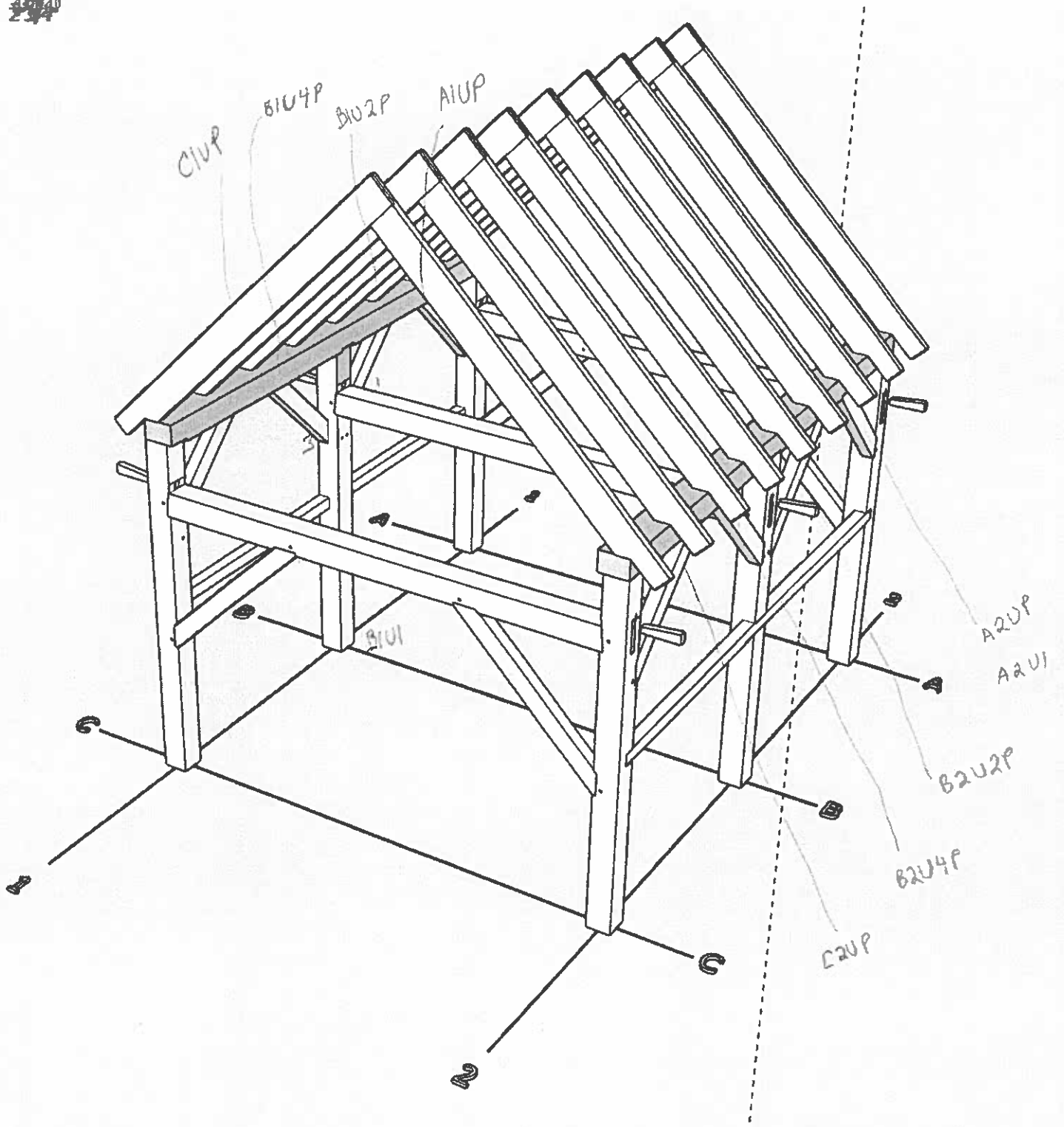
ABBREVIATIONS

AC	ACRYLIC CONNECTION
AD	ADHESIVE
AF	ALUMINUM FINISH
AG	ALUMINUM
AI	ALUMINUM INSULATION
AL	ALUMINUM LATH
AS	ASBESTOS
AT	ASBESTOS TREATMENT
AV	AVOIDANCE
AW	AWNING
AX	AXIS
AY	AXIS
AZ	AXIS
BA	BATH
BB	BATH
BC	BATH
BD	BATH
BE	BATH
BF	BATH
BG	BATH
BH	BATH
BI	BATH
BJ	BATH
BK	BATH
BL	BATH
BM	BATH
BN	BATH
BO	BATH
BP	BATH
BQ	BATH
BR	BATH
BS	BATH
BT	BATH
BU	BATH
BV	BATH
BW	BATH
BX	BATH
BY	BATH
BZ	BATH
CA	CAD
CB	CAD
CC	CAD
CD	CAD
CE	CAD
CF	CAD
CG	CAD
CH	CAD
CI	CAD
CJ	CAD
CK	CAD
CL	CAD
CM	CAD
CN	CAD
CO	CAD
CP	CAD
CQ	CAD
CR	CAD
CS	CAD
CT	CAD
CU	CAD
CV	CAD
CW	CAD
CX	CAD
CY	CAD
CZ	CAD
DA	DRAWING
DB	DRAWING
DC	DRAWING
DD	DRAWING
DE	DRAWING
DF	DRAWING
DG	DRAWING
DH	DRAWING
DI	DRAWING
DJ	DRAWING
DK	DRAWING
DL	DRAWING
DM	DRAWING
DN	DRAWING
DO	DRAWING
DP	DRAWING
DQ	DRAWING
DR	DRAWING
DS	DRAWING
DT	DRAWING
DU	DRAWING
DV	DRAWING
DW	DRAWING
DX	DRAWING
DY	DRAWING
DZ	DRAWING
EA	ELECTRICAL
EB	ELECTRICAL
EC	ELECTRICAL
ED	ELECTRICAL
EE	ELECTRICAL
EF	ELECTRICAL
EG	ELECTRICAL
EH	ELECTRICAL
EI	ELECTRICAL
EJ	ELECTRICAL
EK	ELECTRICAL
EL	ELECTRICAL
EM	ELECTRICAL
EN	ELECTRICAL
EO	ELECTRICAL
EP	ELECTRICAL
EQ	ELECTRICAL
ER	ELECTRICAL
ES	ELECTRICAL
ET	ELECTRICAL
EU	ELECTRICAL
EV	ELECTRICAL
EW	ELECTRICAL
EX	ELECTRICAL
EY	ELECTRICAL
EZ	ELECTRICAL
FA	FLOORING
FB	FLOORING
FC	FLOORING
FD	FLOORING
FE	FLOORING
FF	FLOORING
FG	FLOORING
FH	FLOORING
FI	FLOORING
FJ	FLOORING
FK	FLOORING
FL	FLOORING
FM	FLOORING
FN	FLOORING
FO	FLOORING
FP	FLOORING
FQ	FLOORING
FR	FLOORING
FS	FLOORING
FT	FLOORING
FU	FLOORING
FV	FLOORING
FW	FLOORING
FX	FLOORING
FY	FLOORING
FZ	FLOORING
GA	GLASS
GB	GLASS
GC	GLASS
GD	GLASS
GE	GLASS
GF	GLASS
GG	GLASS
GH	GLASS
GI	GLASS
GJ	GLASS
GK	GLASS
GL	GLASS
GM	GLASS
GN	GLASS
GO	GLASS
GP	GLASS
GQ	GLASS
GR	GLASS
GS	GLASS
GT	GLASS
GU	GLASS
GV	GLASS
GW	GLASS
GX	GLASS
GY	GLASS
GZ	GLASS
HA	HANDRAIL
HB	HANDRAIL
HC	HANDRAIL
HD	HANDRAIL
HE	HANDRAIL
HF	HANDRAIL
HG	HANDRAIL
HH	HANDRAIL
HI	HANDRAIL
HJ	HANDRAIL
HK	HANDRAIL
HL	HANDRAIL
HM	HANDRAIL
HN	HANDRAIL
HO	HANDRAIL
HP	HANDRAIL
HQ	HANDRAIL
HR	HANDRAIL
HS	HANDRAIL
HT	HANDRAIL
HU	HANDRAIL
HV	HANDRAIL
HW	HANDRAIL
HX	HANDRAIL
HY	HANDRAIL
HZ	HANDRAIL
IA	INSULATION
IB	INSULATION
IC	INSULATION
ID	INSULATION
IE	INSULATION
IF	INSULATION
IG	INSULATION
IH	INSULATION
II	INSULATION
IJ	INSULATION
IK	INSULATION
IL	INSULATION
IM	INSULATION
IN	INSULATION
IO	INSULATION
IP	INSULATION
IQ	INSULATION
IR	INSULATION
IS	INSULATION
IT	INSULATION
IU	INSULATION
IV	INSULATION
IW	INSULATION
IX	INSULATION
IY	INSULATION
IZ	INSULATION
JA	JACOBIAN
JB	JACOBIAN
JC	JACOBIAN
JD	JACOBIAN
JE	JACOBIAN
JF	JACOBIAN
JG	JACOBIAN
JH	JACOBIAN
JI	JACOBIAN
JJ	JACOBIAN
JK	JACOBIAN
JL	JACOBIAN
JM	JACOBIAN
JN	JACOBIAN
JO	JACOBIAN
JP	JACOBIAN
JQ	JACOBIAN
JR	JACOBIAN
JS	JACOBIAN
JT	JACOBIAN
JU	JACOBIAN
JV	JACOBIAN
JW	JACOBIAN
JX	JACOBIAN
JY	JACOBIAN
JZ	JACOBIAN
KA	KITCHEN
KB	KITCHEN
KC	KITCHEN
KD	KITCHEN
KE	KITCHEN
KF	KITCHEN
KG	KITCHEN
KH	KITCHEN
KI	KITCHEN
KJ	KITCHEN
KL	KITCHEN
KM	KITCHEN
KN	KITCHEN
KO	KITCHEN
KP	KITCHEN
KQ	KITCHEN
KR	KITCHEN
KS	KITCHEN
KT	KITCHEN
KU	KITCHEN
KV	KITCHEN
KW	KITCHEN
KX	KITCHEN
KY	KITCHEN
KZ	KITCHEN
LA	LATH
LB	LATH
LC	LATH
LD	LATH
LE	LATH
LF	LATH
LG	LATH
LH	LATH
LI	LATH
LJ	LATH
LK	LATH
LL	LATH
LM	LATH
LN	LATH
LO	LATH
LP	LATH
LQ	LATH
LR	LATH
LS	LATH
LT	LATH
LU	LATH
LV	LATH
LW	LATH
LX	LATH
LY	LATH
LZ	LATH
MA	MATERIAL
MB	MATERIAL
MC	MATERIAL
MD	MATERIAL
ME	MATERIAL
MF	MATERIAL
MG	MATERIAL
MH	MATERIAL
MI	MATERIAL
MJ	MATERIAL
MK	MATERIAL
ML	MATERIAL
MM	MATERIAL
MN	MATERIAL
MO	MATERIAL
MP	MATERIAL
MQ	MATERIAL
MR	MATERIAL
MS	MATERIAL
MT	MATERIAL
MU	MATERIAL
MV	MATERIAL
MW	MATERIAL
MX	MATERIAL
MY	MATERIAL
MZ	MATERIAL
NA	NOT A PART
NB	NOT A PART
NC	NOT A PART
ND	NOT A PART
NE	NOT A PART
NF	NOT A PART
NG	NOT A PART
NH	NOT A PART
NI	NOT A PART
NJ	NOT A PART
NK	NOT A PART
NL	NOT A PART
NM	NOT A PART
NN	NOT A PART
NO	NOT A PART
NP	NOT A PART
NQ	NOT A PART
NR	NOT A PART
NS	NOT A PART
NT	NOT A PART
NU	NOT A PART
NV	NOT A PART
NW	NOT A PART
NX	NOT A PART
NY	NOT A PART
NZ	NOT A PART
OA	OPEN AREA
OB	OPEN AREA
OC	OPEN AREA
OD	OPEN AREA
OE	OPEN AREA
OF	OPEN AREA
OG	OPEN AREA
OH	OPEN AREA
OI	OPEN AREA
OJ	OPEN AREA
OK	OPEN AREA
OL	OPEN AREA
OM	OPEN AREA
ON	OPEN AREA
OO	OPEN AREA
OP	OPEN AREA
OQ	OPEN AREA
OR	OPEN AREA
OS	OPEN AREA
OT	OPEN AREA
OU	OPEN AREA
OV	OPEN AREA
OW	OPEN AREA
OX	OPEN AREA
OY	OPEN AREA
OZ	OPEN AREA
PA	PARTIAL
PB	PARTIAL
PC	PARTIAL
PD	PARTIAL
PE	PARTIAL
PF	PARTIAL
PG	PARTIAL
PH	PARTIAL
PI	PARTIAL
PJ	PARTIAL
PK	PARTIAL
PL	PARTIAL
PM	PARTIAL
PN	PARTIAL
PO	PARTIAL
PP	PARTIAL
PQ	PARTIAL
PR	PARTIAL
PS	PARTIAL
PT	PARTIAL
PU	PARTIAL
PV	PARTIAL
PW	PARTIAL
PX	PARTIAL
PY	PARTIAL
PZ	PARTIAL
QA	QUALITY ASSURANCE
QB	QUALITY ASSURANCE
QC	QUALITY ASSURANCE
QD	QUALITY ASSURANCE
QE	QUALITY ASSURANCE
QF	QUALITY ASSURANCE
QG	QUALITY ASSURANCE
QH	QUALITY ASSURANCE
QI	QUALITY ASSURANCE
QJ	QUALITY ASSURANCE
QK	QUALITY ASSURANCE
QL	QUALITY ASSURANCE
QM	QUALITY ASSURANCE
QN	QUALITY ASSURANCE
QO	QUALITY ASSURANCE
QP	QUALITY ASSURANCE
QQ	QUALITY ASSURANCE
QR	QUALITY ASSURANCE
QS	QUALITY ASSURANCE
QT	QUALITY ASSURANCE
QU	QUALITY ASSURANCE
QV	QUALITY ASSURANCE
QW	QUALITY ASSURANCE
QX	QUALITY ASSURANCE
QY	QUALITY ASSURANCE
QZ	QUALITY ASSURANCE
RA	RADIATION
RB	RADIATION
RC	RADIATION
RD	RADIATION
RE	RADIATION
RF	RADIATION
RG	RADIATION
RH	RADIATION
RI	RADIATION
RJ	RADIATION
RK	RADIATION
RL	RADIATION
RM	RADIATION
RN	RADIATION
RO	RADIATION
RP	RADIATION
RQ	RADIATION
RR	RADIATION
RS	RADIATION
RT	RADIATION
RU	RADIATION
RV	RADIATION
RW	RADIATION
RX	RADIATION
RY	RADIATION
RZ	RADIATION
SA	SCHEDULE
SB	SCHEDULE
SC	SCHEDULE
SD	SCHEDULE
SE	SCHEDULE
SF	SCHEDULE
SG	SCHEDULE
SH	SCHEDULE
SI	SCHEDULE
SJ	SCHEDULE
SK	SCHEDULE
SL	SCHEDULE
SM	SCHEDULE
SN	SCHEDULE
SO	SCHEDULE
SP	SCHEDULE
SQ	SCHEDULE
SR	SCHEDULE
SS	SCHEDULE
ST	SCHEDULE
SU	SCHEDULE
SV	SCHEDULE
SW	SCHEDULE
SX	SCHEDULE
SY	SCHEDULE
SZ	SCHEDULE
TA	TANK
TB	TANK
TC	TANK
TD	TANK
TE	TANK

ship
70 ✓
44

78 1-10x10'
52 1x10x12'

~~2x4~~



1x Roof
500 bf
SIDING - SHIP
1x

18 2x10 x 12'

2 4x6 x 14'
4 4x6 x 10'
2 8x10 x 16'
3 8x8 x 14'

6 8x8 x 12'
2 4x6 x 16'
2 4x6 x 14'