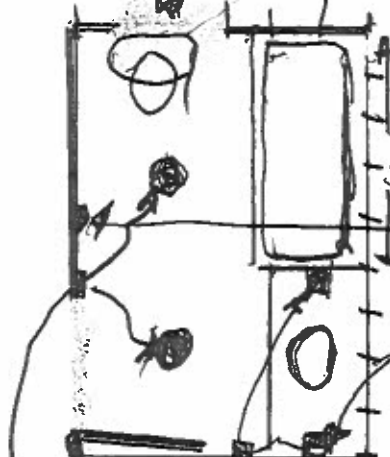


Wynchours outlet

Bath Room 1  
6x9

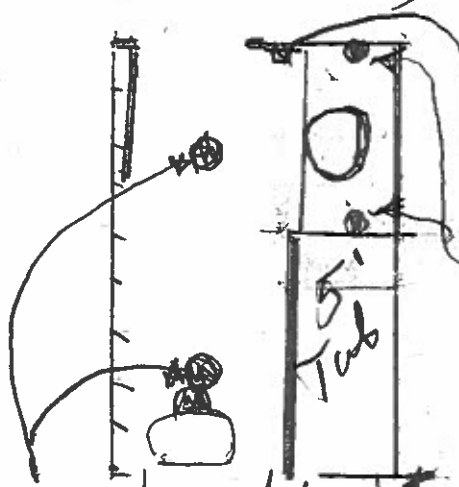


1 square = 1 ft  
5' Tub w Shower  
GFC outlet  
40" GFC outlet 1 ft up  
from counter  
+ 1 ft from Sink edge  
Switch for Scones

GFCI circuit  
at 20 Amp

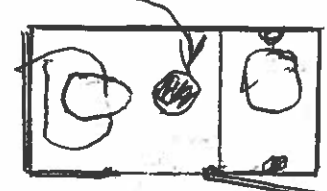
Switch for Overhead

Bathroom 2  
6x9'



Switches for Overhead lights  
+ GFCI double outlet  
Scones

overhead lights



1/2 Bath  
Scones on wall  
GFCI outlets +  
Switch for overhead  
+ Scones

21 Baynes road rafter calculator

<https://www.awc.org/codes-standards/calculators-software/spancalc>

Species	Eastern White Pine
Size	2x6
Grade	No. 2
Member Type	Rafters (Snow Load)
Deflection Limit	L/360
Spacing (in)	24
Exterior Exposure	Wet service conditions? No
	Incised lumber? No
Snow Load (psf)	20
Dead Load (psf)	15

The Maximum Horizontal Span is:

**8 ft. 5 in.**

with a minimum bearing length of 0.56 in.  
required at each end of the member.

Property	Value
Species	Eastern White Pine
Grade	No. 2
Size	2x6
Modulus of Elasticity (E)	1100000 psi
Bending Strength ( $F_b$ )	988.57 psi
Bearing Strength ( $F_{cp}$ )	350 psi
Shear Strength ( $F_v$ )	155.25 psi

While every effort has been made to insure the accuracy of the information presented, and special effort has been made to assure that the information reflects the state-of-the-art, neither the American Wood Council nor its members assume any responsibility for any particular design prepared from this Online Span Calculator. Those using this Online Span

House roof framing contemplates Intermediate bedroom wing carrier supports for roof rafters- parallel to long dimensions----about 7 ft from outside wall doubled 2 X 12" 4 ft slster piece

See drawing

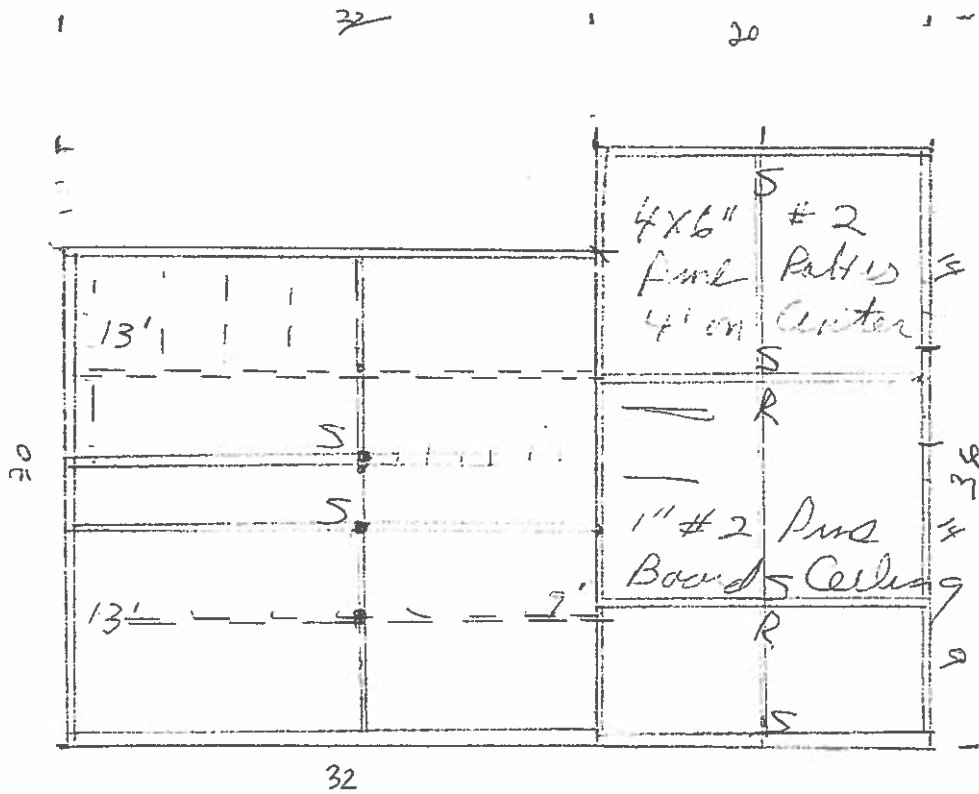
21 Baynes road drawing and comments rafter plan

Cathedral roof 8' high in front section

4 x 6 intermediate rafters 4 ft on center in front portion full 2 X 6 rough sawn

2 x 6 rafters 2 ft OC in back section full 2 X 6 rough sawn

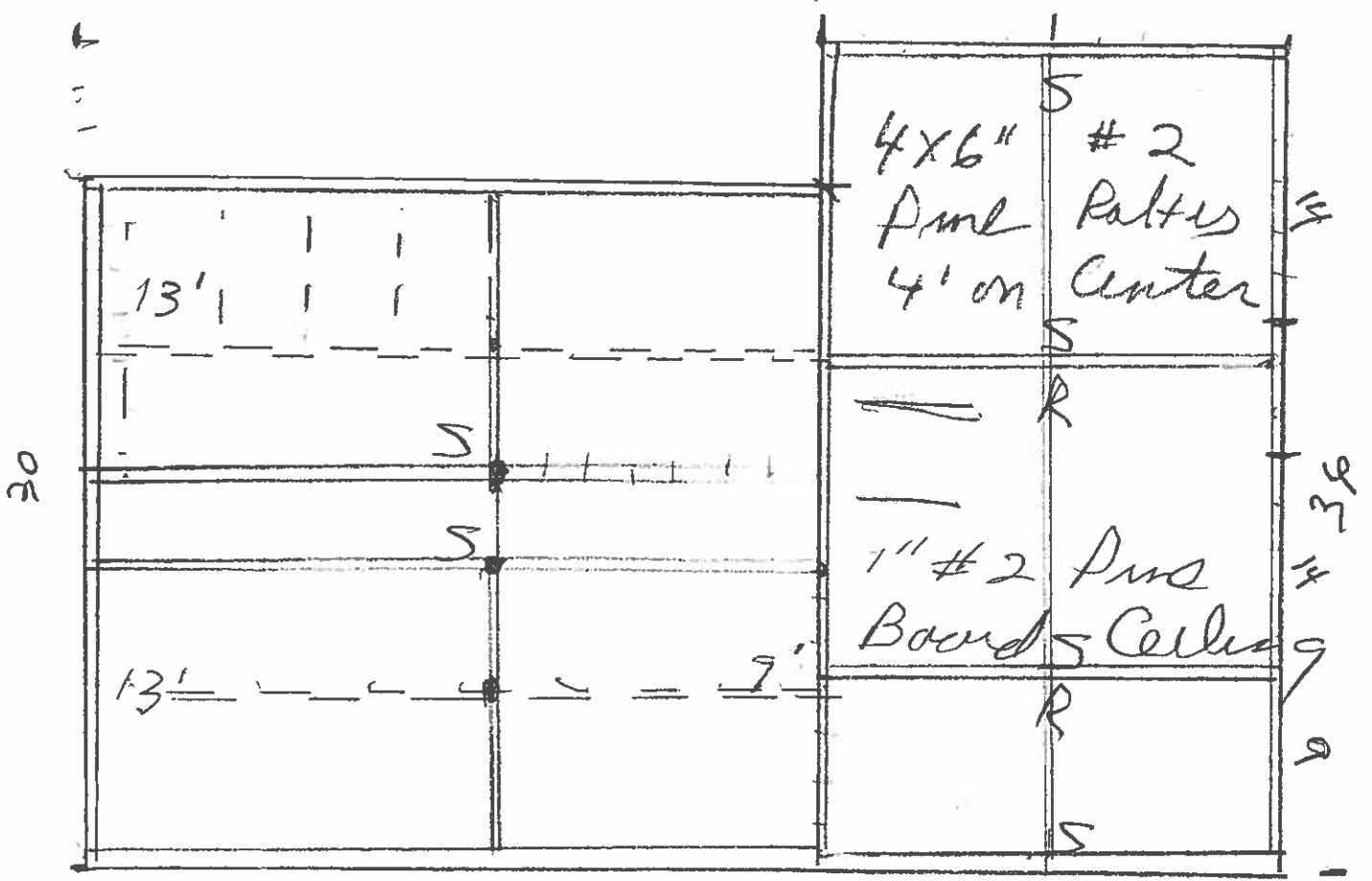
4 x 6 rough sawn ceiling joists 4 ft on center in back portion only load is blown in insulation



- 8x8 #2 Pine Exterior Beams
- S = 8x8 #2 Pine Tumbled Oak Studs
- R = 8x8 #2 Pine Primary Beams
- 8x8 <sup>oak</sup> Ridge Pole
- Intermediate Rafter Carrels
- 6" Pine Rafters (see Table)
- 4x6 #2 Pine Ceiling Joists
- 4' on Center
- 1" Plywood Deck

32

20



32

8x8 #2 Pine Exterior Beams

S = 8x8 #2 Pine Timbers Crusted

R = 8x8 #2 Pine Primary Beams

8x8 <sup>dry</sup> Ridge Pole

----- Intermediate Rafter Carriers

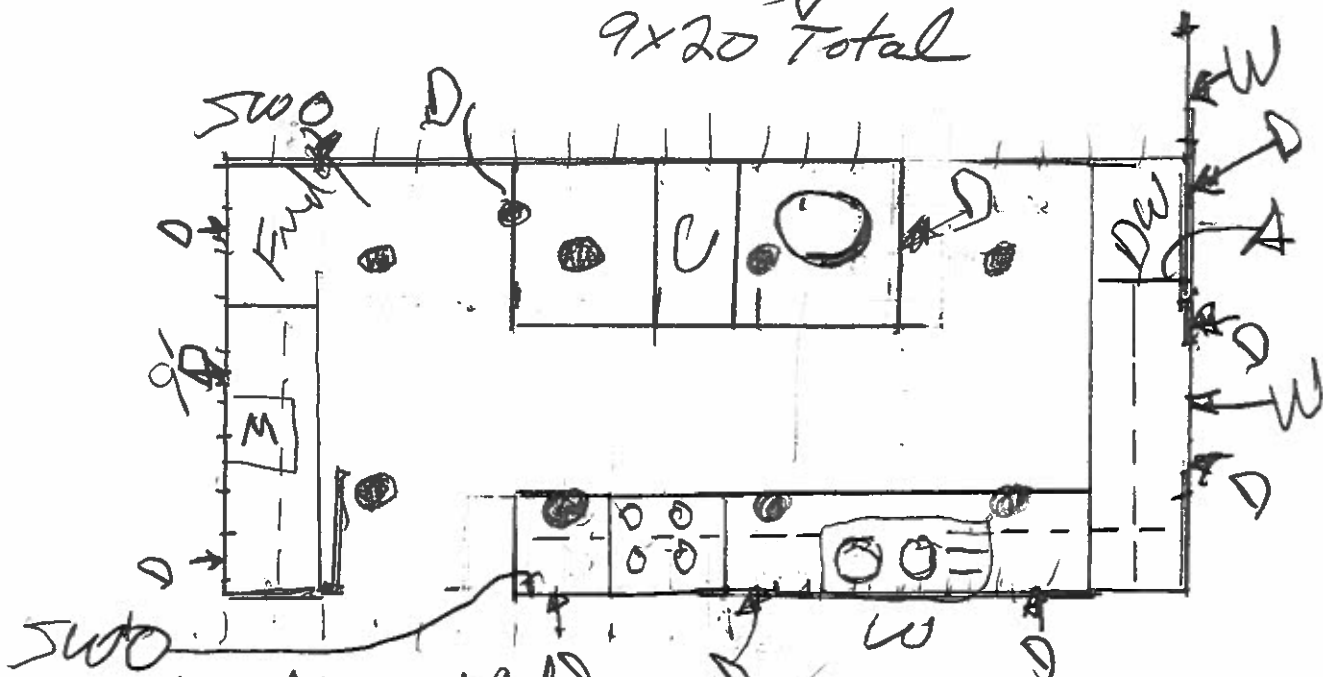
6" Pine Rafters (see Table)

4x6 #2 Pine Ceiling Joists

4' on Center

1" Boarding Over

Kitchen 1 sq = 1 ft  
 9x20 Total



D = double outlet - 20 amp

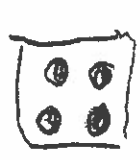
A = double outlet in Cabinet 20 amp  
 Behind Dishwasher

M = Microwave

C = Compact in Island  
 Outlet in Cabinet 20 Amp

W = Window(s)

⊙ = Over head light



30 inch gas Range

Over head hood w 4th light  
 double outlet behind

-- indicates Cabinets over Counters

SW ⊙ Switch on wall for  
 Over head lights