

FIRE ALARM SYSTEM RISER DIAGRAM

NO SCALE

FIRE RISER GENERAL NOTES:

- COORDINATE FIRE ALARM SYSTEM DESIGN AND INSTALLATION WITH THE MUNICIPAL FIRE DEPARTMENT; SUBMIT SUBMITAL DOCUMENTATION FOR THEIR REVIEW PRIOR TO ANY INSTALLATION.
- FIRE ALARM SYSTEM SHALL MEET ALL VERMONT STATE CODE REQUIREMENTS. DEVICE INSTALLATION HEIGHTS AND SIGNAL COVERAGE SHALL MEET THE REQUIREMENTS OF THE AMERICANS WITH DISABILITIES ACT (ADA).
- LOCATE FIRE ALARM EQUIPMENT AND DEVICES, GENERALLY, AS FOLLOWS:
 - MANUAL PULLSTATIONS: 48" AFF
 - VISUAL SIGNALS (STROBES): 84" AFF
 - REMOTE TEST STATIONS: 54" AFF
 - FIRE ALARM PANEL: 72" AFF TO TOP
 - REFER TO SPECIFICATIONS FOR ADDITIONAL RELATED, INFORMATION.
- INSTALLED FIRE ALARM SYSTEM SHALL BE ACCEPTANCE TESTED AS PER THE REQUIREMENTS OF NFPA 72, "INSPECTIONS, TESTING AND MAINTENANCE". INCLUDE THE COMPLETED "INSPECTION AND TESTING FORM" WITH THE OPERATION AND MAINTENANCE MANUALS THAT ARE ULTIMATELY PRESENTED TO THE OWNER.
- PROVIDE FIRE ALARM SYSTEM INITIATION AND SIGNALING LOOP WIRING USING UL LISTED FIRE ALARM CABLE. SIZE CABLES APPROPRIATE FOR LOAD AND VOLTAGE DROP OF WIRING LOOPS. CABLING SHALL BE RUN WITHOUT RACEWAY WHERE CONCEALED IN WALLS OR ABOVE CEILINGS OR WHERE RUN IN EXPOSED ROOF STRUCTURE. PROVIDE RACEWAY WHERE RUN EXPOSED VERTICALLY ON WALLS OF SERVICE LEVEL TO MATCH RACEWAY UTILIZED FOR POWER WIRING.
- PROVIDE RED BOXES/COVERS FOR FIRE ALARM SYSTEM.
- DORMITORY ROOMS: UPON A SMOKE DETECTOR LOCATED IN A DORM ROOM SENSING SMOKE, THE SIGNALING DEVICE IN THAT ROOM SHALL OPERATE (ONLY THAT DEVICE SHALL ALARM) AND CAUSE A TROUBLE SIGNAL AT THE FIRE ALARM SYSTEM. THE DORMITORY SMOKE DETECTORS SHALL OPERATE IN THE SAME/SIMILAR FASHION AS A SINGLE STATION DETECTOR EVEN THOUGH IT IS A SYSTEM DETECTOR.
- FACULTY RESIDENCES: UPON A SMOKE OR SMOKE/CO DETECTOR LOCATED IN A FACULTY RESIDENCE SENSING SMOKE OR CO, ALL SIGNALING DEVICES IN THAT RESIDENCE SHALL OPERATE AND CAUSE A TROUBLE SIGNAL AT THE BUILDING FIRE ALARM SYSTEM. THE FACULTY RESIDENCE SMOKE AND SMOKE/CO DETECTORS SHALL OPERATE IN THE SAME/SIMILAR FASHION AS MULTIPLE STATION DETECTORS EVEN THOUGH THEY ARE SYSTEM DETECTORS.

FIRE RISER DRAWING NOTES:

- (F1) PROVIDE A 20A1P, 120VAC CIRCUIT TO THIS EQUIPMENT. PROVIDE A LOCK-ON CLIP FOR THE CIRCUIT BREAKER.
- (F2) PROVIDE #4 AWG GROUND WIRE TO AN ELECTRICAL SYSTEM GROUNDING ELECTRODE.
- (F3) PROVIDE KEY BOX PER FIRE DEPARTMENT REQUIREMENTS AND LOCATE AS PER MUNICIPAL FIRE DEPARTMENT DIRECTION.
- (F4) PROVIDE A REMOTE POWER SUPPLIES (NAC, SNAC, ETC.) AS NECESSARY TO SUPPORT POWERING OF ALARM SIGNALS THROUGHOUT THE FACILITY. THE REMOTE POWER SUPPLY IS NOT INDICATED ON PLANS; LOCATE IN A NON-PUBLIC SPACE AND INDICATE LOCATION ON SHOP DRAWINGS. PROVIDE SMOKE DETECTOR ABOVE WHERE PANEL IS LOCATED.
- (F5) COORDINATE THE FINAL LOCATION AND QUANTITY OF SPRINKLER SYSTEM FLOW SWITCHES, TAMPER SWITCHES, ETC. WITH THE FINAL FIRE ALARM AND SPRINKLER SHOP DRAWINGS PRIOR TO INSTALLATION. COORDINATE CONNECTIONS WITH SPRINKLER SYSTEM CONTRACTOR.
- (F6) PROVIDE CONNECTION TO TWO TELEPHONE LINES FOR PROPER OPERATION OF FIRE ALARM PANEL DIGITAL DIALER AS PRIMARY COMMUNICATION FOR TRANSMITTING OF ALARM CONDITIONS OFF-SITE TO EITHER CENTRALLY MANNED STATION OR TO THE MUNICIPAL FIRE DEPARTMENT.
- (F7) PROVIDE OUTPUT MODULES TO SEND SIGNAL TO ELEVATOR TO INITIATE RECALL UPON ALARM SIGNAL FROM HEAT OR SMOKE DETECTORS IN ELEVATOR MACHINE ROOM, SHAFT OR ELEVATOR LOBBIES.
- (F8) PROVIDE OUTPUT MODULES TO SEND SIGNAL TO ELEVATOR SHUNT TRIP CIRCUIT BREAKER TO OPEN UPON SIGNAL FROM 135F FIXED TEMPERATURE HEAT DETECTOR AT TOP OF SHAFT.
- (F9) COMBINATION SMOKE DETECTOR WITH 135F FIXED TEMPERATURE HEAT DETECTOR AT THE TOP OF SHAFT.
- (F10) PROVIDE INPUT MODULE TO MONITOR KITCHEN HOOD FIRE PROTECTION SYSTEM AND SEND SIGNAL FOR ALARM TO THE FIRE ALARM SYSTEM UPON SENSING FIRE AND RELEASING CHEMICAL AGENT.
- (F11) PROVIDE OUTPUT MODULES AS NECESSARY FOR SIGNAL TO UL924 RELAYS TO BRING EMERGENCY LIGHTING TO FULL OUTPUT UPON FIRE ALARM GOING INTO ALARM.

ELECTRICAL LEGEND:

SEE LUMINAIRE SCHEDULE FOR LUMINAIRE TYPES	FR	OCCUPANCY SENSOR LIGHTING CONTROL DEVICE; REFER TO SCHEDULE
DAYLIGHT SENSOR	DS	
MANUAL SINGLE POLE LIGHTING SWITCH; 3 = 3 WAY, OC = OCCUPANCY SENSOR, FIR = PASSIVE INFRARED; DT = DUAL TECHNOLOGY; D = DIMMING, LV = LOW VOLTAGE, P = SWITCH WITH PILOT, K = KEYED SWITCH	SP	
PHOTOELECTRIC CONTROL SENSOR	PE	
TIMECLOCK CONTROLLER	TC	
ELECTRICAL PANELBOARD	EP	
ELECTRIC METER	EM	
HOMERUN TO PANEL INDICATED	HR	
BRANCH CIRCUIT OR FEEDER WIRING	BC	
UNDERGROUND WIRING	UG	
SINGLE RECEPTACLE OUTLET	RO	
DUPLEX RECEPTACLE OUTLET	DO	
DUPLEX RECEPTACLE OUTLET WITH 2 USB PORTS	DU	
DOUBLE-DUPLEX (QUAD) RECEPTACLE OUTLET	DD	
GROUND FAULT PROTECTION RECEPTACLE OUTLET	GFO	
SPECIAL OUTLET (AS NOTED ON PLANS)	SO	
RANGE HOOD CONNECTION	RH	
JUNCTION BOX	JB	
CONTROL RELAY	CR	
LINE VOLTAGE THERMOSTAT, 'C' INDICATES COOLING	LT	
MOTOR SWITCH	MS	
SAFETY/DISCONNECT SWITCH; PROVIDE RATINGS AND FUSES AS PER SCHEDULES	DS	
MAGNETIC MOTOR STARTER, FULL VOLTAGE, NON-REVERSING	MS	
EQUIPMENT CONTROL PACKAGE; FURNISHED INTEGRAL TO THE EQUIPMENT	EP	
MOTOR	MO	
FIRE ALARM CONTROL PANEL	FACP	
FIRE ALARM ANNUNCIATOR PANEL	FAPP	
FIRE FIGHTERS KEYBOX	FK	
FIRE ALARM SYSTEM MANUAL PULLSTATION	MP	
SPRINKLER SYSTEM FLOW SWITCH	FS	
SPRINKLER SYSTEM TAMPER SWITCH	TS	
SPRINKLER SYSTEM PRESSURE SWITCH	PS	
FIRE ALARM SYSTEM INPUT MODULE	IM	
FIRE ALARM SYSTEM OUTPUT MODULE	OM	
PHOTOELECTRIC SMOKE DETECTOR; SB = SOUNDER BASE, LF = LOW FREQUENCY, SS = SINGLE STATION (NON-SYSTEM)	SD	
SMOKE/CARBON MONOXIDE COMBO DETECTOR; SB = SOUNDER BASE, LF = LOW FREQUENCY, SS = SINGLE STATION (NON-SYSTEM)	SCD	
FIRE ALARM SYSTEM HORN/STROBE WITH CANDELA RATING INDICATED	HS	
FIRE ALARM SYSTEM STROBE VISUAL SIGNAL WITH CANDELA RATING INDICATED	SV	
FIRE ALARM STROBE VISUAL SIGNAL, CEILING MOUNTED, SS = SINGLE STATION (NON-SYSTEM)	FS	
DATA (LAN) DEVICE OUTLET, NUMBER INDICATES NUMBER OF CABLES; TVID = ONE VOICE, ONE DATA JACK/CABLE	TVID	
CATV (CABLE TELEVISION) DEVICE OUTLET	VC	
CEILING MOUNTED DATA (LAN) WIRELESS ACCESS POINT, NUMBER INDICATES NUMBER OF CABLES	VWAP	
ELEVATOR COMMUNICATIONS MASTER ANNUNCIATOR CONTROL PANEL	ECMP	
ELEVATOR COMMUNICATIONS CALL STATION	ES	
SECURITY CAMERA LOCATION, CEILING MOUNTED, UON	SC	
ACCESS CONTROL SYSTEM CARD READER	CR	
MONITOR POINT ACCESS POINT	MPAP	

ELECTRICAL ABBREVIATIONS:

OHE	OVERHEAD ELECTRICAL LINES
AF, AFG, AFR	ABOVE FINISH FLOOR, GRADE, ROOF
NL	NIGHT LIGHTING LUMINAIRE, CONNECTED TO UNSWITCHED PORTION OF LIGHTING CIRCUIT
WP	WEATHERPROOF WITH COVER "CLOSED" FOR RECEPTACLES; NEMA 3R FOR ENCLOSURES
WL	WET LOCATION WITH COVER "OPEN" FOR RECEPTACLES; NEMA 4 FOR ENCLOSURES
AC	ABOVE COUNTER
CM	CEILING MOUNTED
WM	WALL MOUNTED
TYP	TYPICAL
NTS	NOT TO SCALE
UON	UNLESS OTHERWISE NOTED
(X)	EXISTING, TO REMAIN
(RX)	REMOVE EXISTING
(RR)	REMOVE, RELOCATE
(R)	RELOCATED
(N)	NEW
(F)	FUTURE
MECH	MECHANICAL EQUIPMENT CONNECTION
BLDG	BUILDING EQUIPMENT CONNECTION

GENERAL NOTES:

THESE GENERAL NOTES APPLY TO ALL ELECTRICAL PLAN DRAWINGS.

- FOLLOW ALL APPLICABLE CODES AND USE GOOD ELECTRICAL CONSTRUCTION PRACTICES WHEN DETERMINING TYPES OF WIRING METHODS AND SIZING OF CONDUCTORS AND CONDUIT. INSTALL ALL POWER, CONTROL AND SIGNAL WIRING USING METHODS AS FOLLOWS:
 - UNDERGROUND ELECTRIC SERVICE WIRING: INDIVIDUAL CONDUCTORS IN GALVANIZED STEEL RIGID METALLIC CONDUIT (RMC) AS PER THE REQUIREMENTS OF LIBERTY UTILITIES.
 - UNDERGROUND WIRING OR BENEATH CONCRETE SLAB (NOT ELECTRICAL WIRING): INDIVIDUAL CONDUCTORS IN SCHEDULE 40 PVC RIGID NON-METALLIC CONDUIT (RNC) FOR DIRECT BURIAL; TRANSITION TO GALVANIZED STEEL RIGID METALLIC CONDUIT (RMC) WHERE CONDUIT RISES TO BE EXPOSED ABOVE GRADE OR CONCRETE SLAB, FROM A MINIMUM OF 24" BELOW FINISHED GRADE.
 - UNDERGROUND WIRING OR BENEATH ROAD WAY OR PARKING AREA: INDIVIDUAL CONDUCTORS IN SCHEDULE 80 PVC RIGID NON-METALLIC CONDUIT (RNC) FOR DIRECT BURIAL; TRANSITION TO GALVANIZED STEEL RIGID METALLIC CONDUIT (RMC) WHERE CONDUIT RISES TO BE EXPOSED ABOVE GRADE OR CONCRETE SLAB, FROM A MINIMUM OF 24" BELOW FINISHED GRADE.
 - EXPOSED, EXTERIOR LOCATIONS: INDIVIDUAL CONDUCTORS IN GALVANIZED STEEL RIGID METALLIC CONDUIT (RMC) TO MOTORIZED (VIBRATING) EQUIPMENT SHALL BE LIQUID TIGHT FLEXIBLE METALLIC CONDUIT (LFMC), MAXIMUM 6' LENGTH
 - WIRING CONCEALED IN INACCESSIBLE WALLS AND CEILINGS: MULTI-CONDUCTOR TYPE NM (NON-METALLIC SHEATHED) AND TYPE SE (SERVICE ENTRANCE) CABLE.
 - CONCEALED WIRING ABOVE ACCESSIBLE CEILINGS: MULTI-CONDUCTOR TYPE NM (NON-METALLIC SHEATHED) AND TYPE SE (SERVICE ENTRANCE) CABLE.
 - EXPOSED BRANCH CIRCUITS (MECHANICAL ROOM, UTILITY SPACES): INDIVIDUAL CONDUCTORS IN ELECTRICAL METALLIC TUBING (EMT) WITH SET SCREW FITTINGS; FINAL CONNECTIONS TO MOTORIZED (VIBRATING) EQUIPMENT SHALL BE LIQUID TIGHT FLEXIBLE METALLIC CONDUIT (LFMC), MAXIMUM 6' LENGTH
 - CONTRACTOR SHALL CONSULT WITH ENGINEER REGARDING QUESTIONS REGARDING WIRING METHODS PRIOR TO ROUGH-IN OF WIRING
- MINIMUM CONDUCTOR SIZE SHALL BE 12 AWG. PROVIDE AN INSULATED GROUND CONDUCTOR WITHIN ALL CABLES AND RACEWAYS. ALL CONDUCTORS SHALL BE COPPER, UNLESS OTHERWISE NOTED.
- CIRCUITS SHALL BE 20A1P, (2#12, 1#12G) 1/2"C. OR CABLE, UNLESS INDICATED OTHERWISE.
- MINIMUM 1" CONDUIT UNDERGROUND IN SITE.
- ALL WIRING SHALL BE ROUTED CONCEALED AND DEVICES SHALL BE FLUSH/RECESSED MOUNTED TO THE GREATEST EXTENT POSSIBLE. WIRING IN THE UTILITY SPACES SHALL BE PERMITTED TO BE EXPOSED WHERE NO WALL FINISH EXISTS. WIRING ROUTED EXPOSED ON VERTICAL SURFACES SHALL BE ROUTED VERTICALLY; HORIZONTAL WIRING SHALL BE ROUTED AT THE CEILING LEVEL OF THESE SPACES, NOT ON THE WALLS.
- MOUNT LIGHTING CONTROL SWITCHES 48" ABOVE FINISHED FLOOR; WITHIN 6" OF THE LATCH SIDE OF THE DOOR, UNLESS OTHERWISE INDICATED. "AC" INDICATES MOUNTING 8" ABOVE COUNTER BACK SPLASH, APPROXIMATELY 44" ABOVE FINISHED FLOOR.
- LIFE SAFETY LUMINAIRES (EXIT SIGNS, EMERGENCY BATTERY UNITS) SHALL BE CONNECTED TO THE UNSWITCHED PORTION OF THE LIGHTING CIRCUIT SERVING THE AREA, AHEAD OF ANY SWITCHING OR AUTOMATIC CONTROLS.
- ALL LIGHTING LAYOUTS SHALL BE COORDINATED WITH ARCHITECT'S REFLECTED CEILING PLANS AND EXACT LOCATION OF LUMINAIRES SHALL BE CHECKED AT CONSTRUCTION TIME AND PRIOR TO INSTALLATION WITH OTHER TRADE'S LATEST DRAWINGS AND EQUIPMENT LAYOUTS. COORDINATE LUMINAIRE TRIMS AND MOUNTING WITH CEILING CONSTRUCTION. FINAL LOCATION OF LUMINAIRES SHALL BE REASONABLY CONDUCTIVE TO ACCESS BY THE OWNER FOR ROUTINE MAINTENANCE.
- MOUNT RECEPTACLE DEVICES 18" ABOVE FINISHED FLOOR, UNLESS OTHERWISE NOTED. MOUNT RECEPTACLE DEVICES SUCH THAT THEY ARE ORIENTED SO THE GROUND IS IN THE "UP" POSITION. "AC" INDICATES MOUNTING 8" OVER COUNTER BACK SPLASH, APPROXIMATELY 44" ABOVE FINISHED FLOOR.
- 1.1. ALL RECEPTACLES SHALL BE TAMPER PROOF STYLE.
- 10.1. ENSURE RECEPTACLE PLACEMENT MEETS ALL DWELLING UNIT CODE REQUIREMENTS, INCLUDING MAXIMUM 12' ON CENTER SPACING.
- 10.2. RECEPTACLE (GENERALLY DEVICES) PLACEMENT ON WALLS COMMON BETWEEN DORM ROOMS SHALL BE LOCATED IN SEPARATE WALL CAVITY FROM THE NEIGHBORING ROOM.
- 10.3. DO NOT LOCATE ANY RECEPTACLES ABOVE ELECTRIC BASEBOARD HEAT.
11. PROVIDE MEMBRANE PROTECTION FOR ALL DEVICE BOXES PENETRATING FIRE RATED WALLS.
- 11.1. BASIS OF DESIGN PRODUCT IS 3M FIRE BARRIER MOLDABLE PUTTY PADS MPP+. PROVIDE A SUBMITTAL PRODUCT INFORMATION FOR REVIEW AND APPROVAL.
12. AIR AND VAPOR TIGHT BOXES SHALL BE USED AT EXTERIOR WALLS AND CEILINGS, BELOW ATTIC SPACES, AND ADJACENT TO UNCONDITIONED SPACES. THIS INCLUDES ALL ELECTRICAL BOXES, CABLE BOXES, FIRE SAFETY SYSTEM BOXES, ETC.
13. SMOKE DETECTORS AND CARBON MONOXIDE DETECTORS TO MAINTAIN A MINIMUM 3'-0" SEPARATION FROM ANY HVAC DIFFUSER OR PADDLE FAN.
14. WHERE MECHANICAL EQUIPMENT IS INDICATED ON PLAN WITHOUT LOCATION/DISCONNECT, EITHER IT IS FURNISHED WITH THE EQUIPMENT OR IS INDICATED IN THE EQUIPMENT WIRING DIAGRAM AND EQUIPMENT SCHEDULE. REFER TO MECHANICAL EQUIPMENT SCHEDULE AND WIRING DIAGRAMS FOR CONNECTIONS TO CONTROL DEVICES.

ELECTRICAL ALTERNATES

REFER TO SPECIFICATION SECTION 26 0010, ELECTRICAL GENERAL PROVISIONS, FOR ALTERNATES THAT AFFECT THE ELECTRICAL WORK INDICATED ON THESE DOCUMENTS.



VERMONT INTEGRATED
ARCHITECTURE, PC

ANDREA MURRAY, AIA, NCARB, LEED AP
andrea@vermontintegratedarchitecture.com

ASHAR NELSON, AIA, LEED AP
ashar@vermontintegratedarchitecture.com

P.O. Box 862
Middlebury, VT 05753
802.989.7249

CIVIL ENGINEER

Kevin Warden, P.E.
Engineering Ventures
kevinw@engineeringventures.com
802.863.6225

STRUCTURAL ENGINEER

Bob Neeld, P.E, President
Engineering Ventures
bobsn@engineeringventures.com
802.863.6225

MECH./PLUMBING ENGINEER

Daniel Dupras, P.E.
Engineering Services of Vermont, LLC
daniel.dupras@esvllc.com
802.855.8091

ELECTRICAL ENGINEER

CLAUS BARTENSTEIN, P.E., LEED-AP
Engineering Services of Vermont, LLC
claus.bartenstein@esvllc.com
802.855.8091

CONSTRUCTION MANAGER

NAME & TITLE
ReArch Company, Inc.
EMAIL HERE
802.863.8727

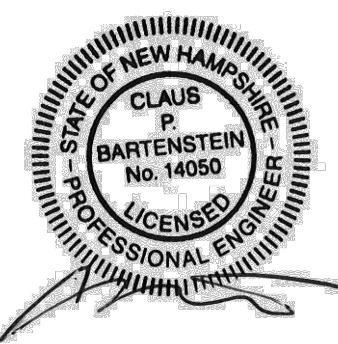
DATE ISSUED: 05/15/2023

Drawn: ESVT

Checked: CFPB

REVISIONS:

#	Date	Description
1	08/22/2023	BULLETIN #9
2	09/26/2023	RFI 044 EXIT, EM. GENERATOR



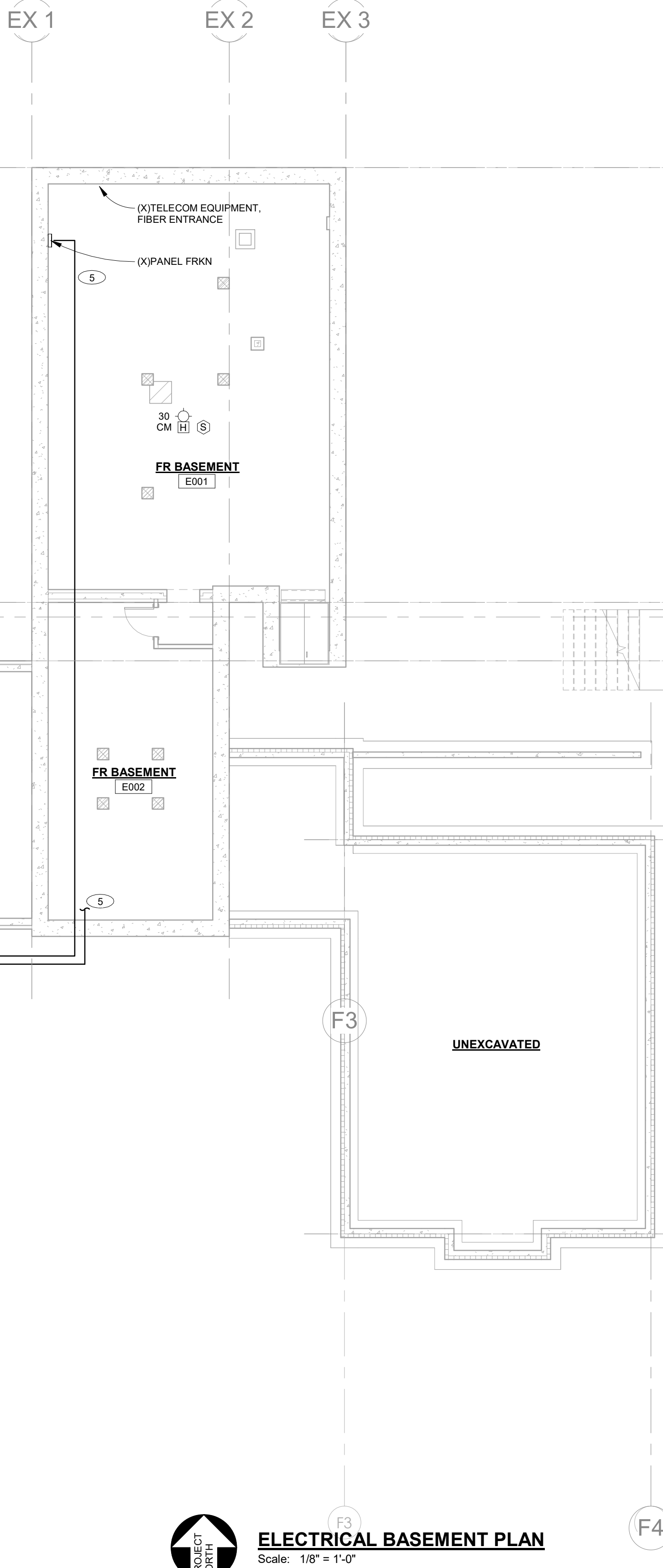
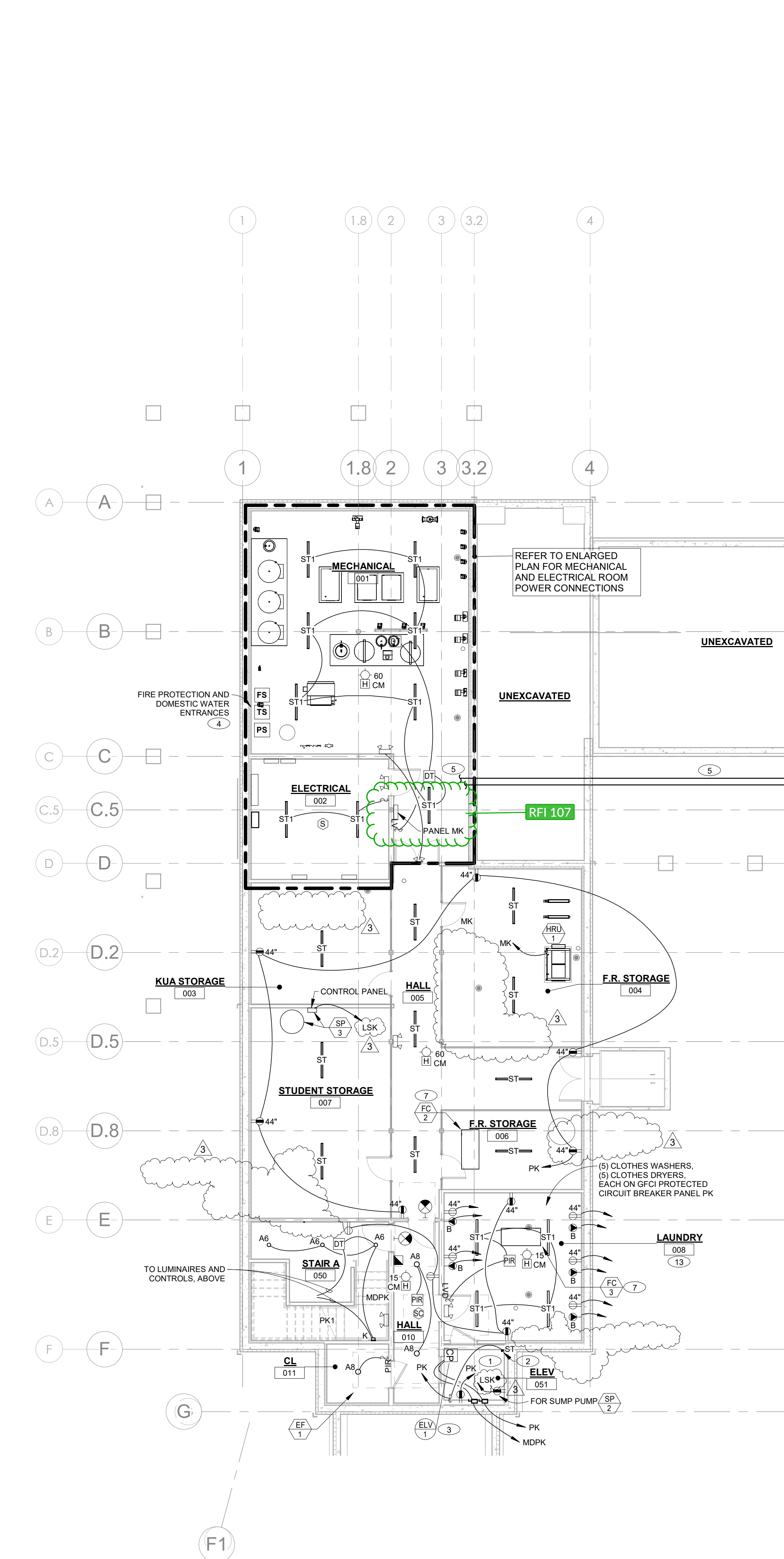
PERMIT SET 05/15/2023

KUA
KILTON/WELCH
DORMITORIES

Main Street
Meriden, NH 03770

ELECTRICAL
NOTES, LEGEND,
DETAILS

E1



Alternates status as of 08/11/2023:

- Accepted: BP #1, alternate #1c: Kilton Faculty Residence A, and Residence B. Core and shell with interior framing, stair framing, exterior finishes, exterior doors, exterior windows, temporary railings at the stairs, fire alarm detectors, temporary lighting. No interior finishes, no insulation in wall cavities, no interior doors.
- NOT accepted: BP #1, alternate #2: Add - Welch renovations of 1600 SF, new 176 SF screen porch, and new 40 sf front canopy roof.
- NOT accepted: BP #1, alternate #3: Existing Kilton envelope upgrades.
- NOT accepted: BP #1, alternate #4: Pave remaining service driveway to just beyond relocated garage.
- NOT accepted: BP #1, alternate #5: reconstruct and pave service drive from relocated garage to service building.
- NOT accepted: BP #1, alternate #6: alternate window manufacturer.
- Accepted: BP #2: Existing Kilton Dorm renovations.
- NOT accepted: Existing Kilton Faculty Residence renovations.
- NOT accepted: BP #2, alternate #1: Welch Faculty residence fit-up.
- NOT accepted: BP #2, alternate #2: Kilton Faculty residence A fit-up.
- NOT accepted: BP #2, alternate #3: Kilton Faculty residence B fit-up.
- NOT accepted: BP #2, alternate #4: Welch existing faculty residence renovation.
- NOT accepted: BP #2, alternate #5: Kilton dorm lighting upgrade.
- NOT accepted: BP #2, alternate #6: Kilton & Welch upgrade heat pumps to DDC controls.
- NOT accepted: BP #2, alternate #7: Kilton add new air source heat pumps to existing Faculty.
- NOT accepted: BP #2, alternate #8: Kilton & Welch air-leakage control & aerobarrier add.
- Accepted: BP #2, alternate #9: Kilton & Welch add geothermal system.

DRAWING NOTES:

THESE DRAWING NOTES APPLY TO THIS DRAWING, ONLY.

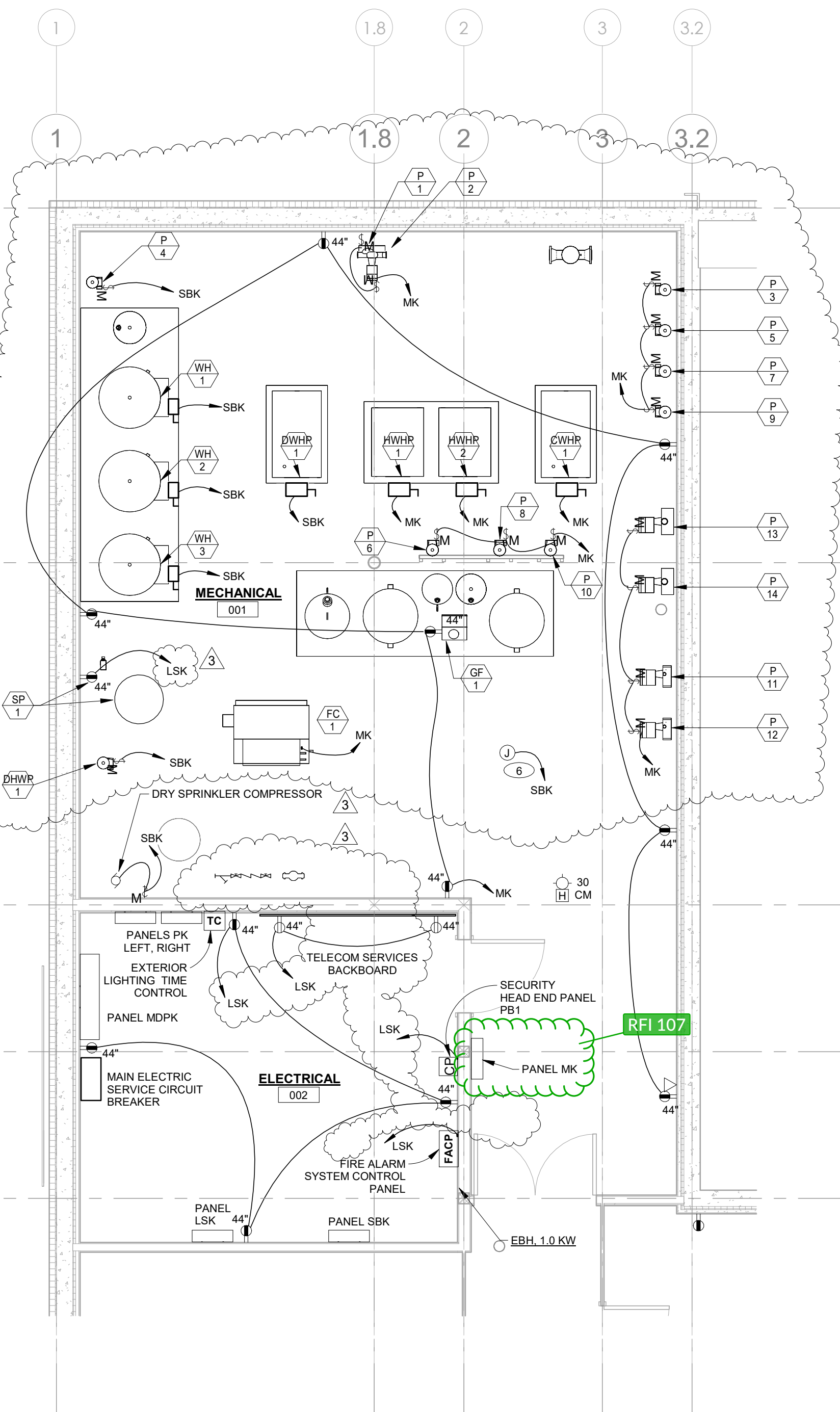
1. INSTALL SERVICE RECEPTACLE, SWITCH, LIGHT AND SUMP RECEPTACLE. COORDINATE LOCATIONS WITH APPROVED ELEVATOR SHOP DRAWING AND ELEVATOR INSTALLER PRIOR TO ROUGH-IN.
2. LOCATE A TYPE ST LUMINAIRE MOUNTED VERTICALLY IN CORNER OF SHAFT.
3. ELEVATOR CONTROLLER AND MACHINE IS INTEGRAL TO THE ELEVATOR FACING INTO THE CORRIDOR. PROVIDE POWER CONNECTIONS FOR ELEVATOR POWER, CAB LIGHTING AND A CAB POTTS LINE FOR CAB TELEPHONE. PROVIDE A FIRE ALARM SYSTEM RELAY MODULE CONNECTION TO ELEVATOR CONTROLLER FOR ELEVATOR RECALL. COORDINATE FINAL LOCATIONS WITH APPROVED ELEVATOR SHOP DRAWING AND ELEVATOR INSTALLER.
4. PROVIDE MONITORING OF SPRINKLER FLOW AND TAMPER SWITCHES BY THE FIRE ALARM SYSTEM. COORDINATE QUANTITY OF FIRE PROTECTION DEVICES TO BE MONITORED WITH THE APPROVED FIRE PROTECTION SHOP DRAWING AND SYSTEM INSTALLER.
5. PROVIDE NEW FEEDER UNDERGROUND TO PANEL FRKN FROM MDPK. PROVIDE A 1.5\"/>
6. PROVIDE CIRCUIT FOR MECHANICAL CONTROL POWER. COORDINATE LOCATIONS WITH MECHANICAL.
7. PROVIDE A COMMON CIRCUIT FROM PANEL MK TO SERVE FC2 & FC3.
8. (NOT USED)
9. (NOT USED)
10. (NOT USED)
11. (NOT USED)
12. (NOT USED)
13. COORDINATE AND VERIFY LAUNDRY CIRCUITS. PRIOR TO ROUGH IN, WITH THE OWNERS PROVIDED EQUIPMENT.

GENERAL NOTES:

REFER TO GENERAL NOTES ON DRAWING E6 WHICH APPLY TO THIS DRAWING, AS WELL AS ANY NOTES WHICH FOLLOW.

PROVIDE LIGHTING CIRCUITS AS FOLLOWS:

1. - NOTE NOT USED -
2. STAND-BY: PROVIDE A COMMON CIRCUIT IN PANEL LSK TO SERVE ALL LUMINAIRES IN:
 - A. 001 MECHANICAL
 - B. 002 ELECTRICAL
 - C. 005 HALL
 - D. 010 HALL
 - E. 050 STAIR A
3. PROVIDE A COMMON CIRCUIT IN PANEL PK TO SERVE ALL LUMINAIRES IN THE BALANCE OF THE DORMITORY BASEMENT.



ENLARGED ELECTRIC & MECHANICAL ROOMS

Scale: 1/4\"/>



ANDREA MURRAY, AIA, NCARB, LEED AP
andrea@vermontintegratedarchitecture.com

ASHAR NELSON, AIA, LEED AP
ashar@vermontintegratedarchitecture.com

P.O. Box 862
Middlebury, VT 05753
802.989.7249

CIVIL ENGINEER

Nicholas Fiore, P.E.
Engineering Ventures
nikf@engineeringventures.com
802.863.6225

STRUCTURAL ENGINEER

Bob Neeld, P.E.
Engineering Ventures
bobn@engineeringventures.com
802.863.6225

MECH./PLUMBING ENGINEER

Daniel Dupras, P.E.
Engineering Services of Vermont, LLC
daniel.dupras@esvllc.com
802.885.8091

ELECTRICAL ENGINEER

Claus Bartenstein, P.E., LEED-AP
Engineering Services of Vermont, LLC
claus.bartenstein@esvllc.com
802.885.8091

CONSTRUCTION MANAGER

Calvin Russell, Senior Project Manager
ReArch Company, Inc.
calvinr@rearchcompany.com
802.863.8727



DATE ISSUED: 05/15/2023

Drawn: ESVT

Checked: CPB

REVISIONS:

#	Date	Description
1	08/22/23	Bulletin #9
2	09/26/23	Bulletin #13 RFI 044
3	01/02/24	Bulletin #21

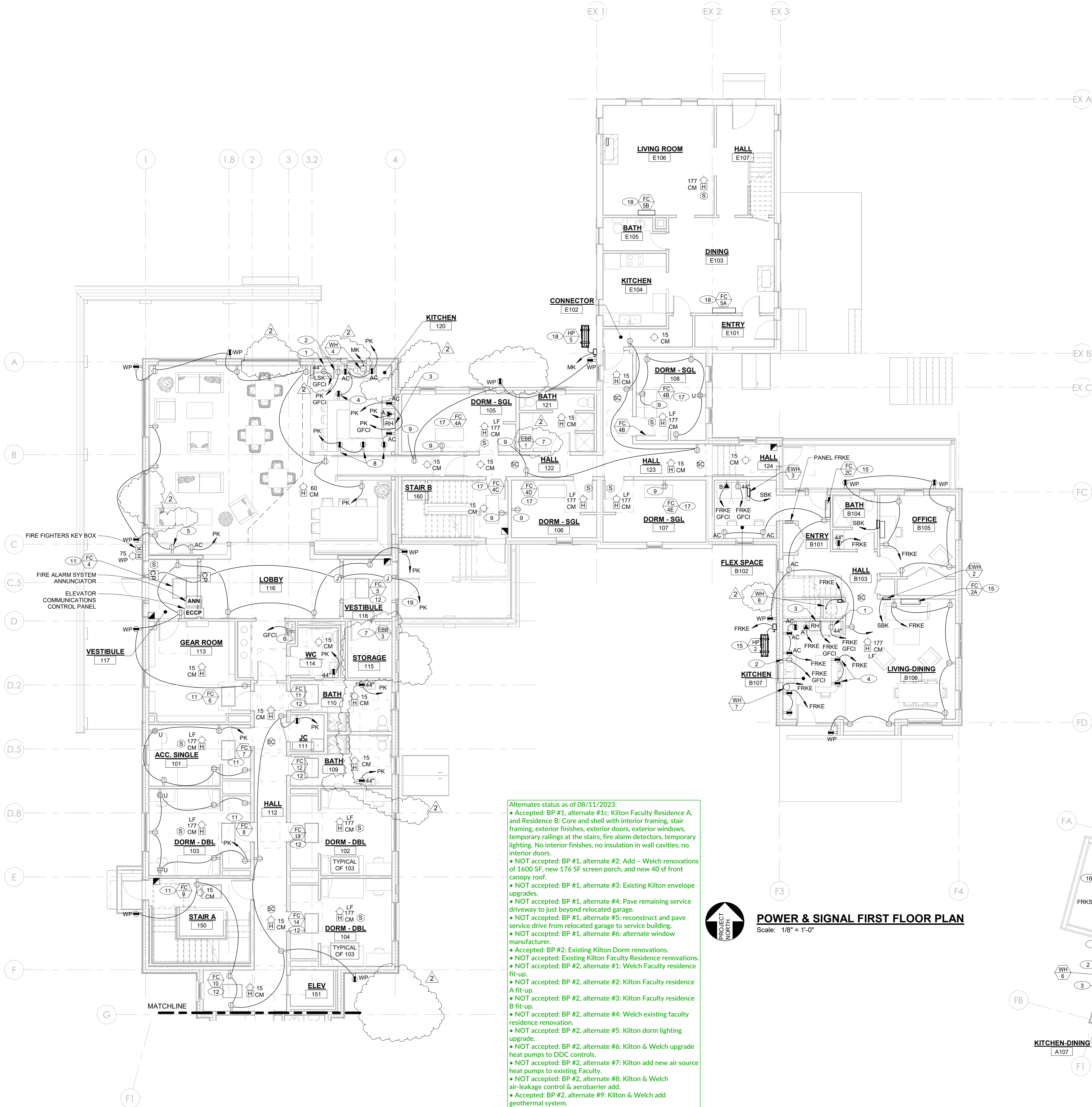
PERMIT SET 05/15/2023

KUA
KILTON/WELCH
DORMITORIES

Main Street
Meriden, NH 03770

KILTON
ELECTRICAL
BASEMENT

EK6

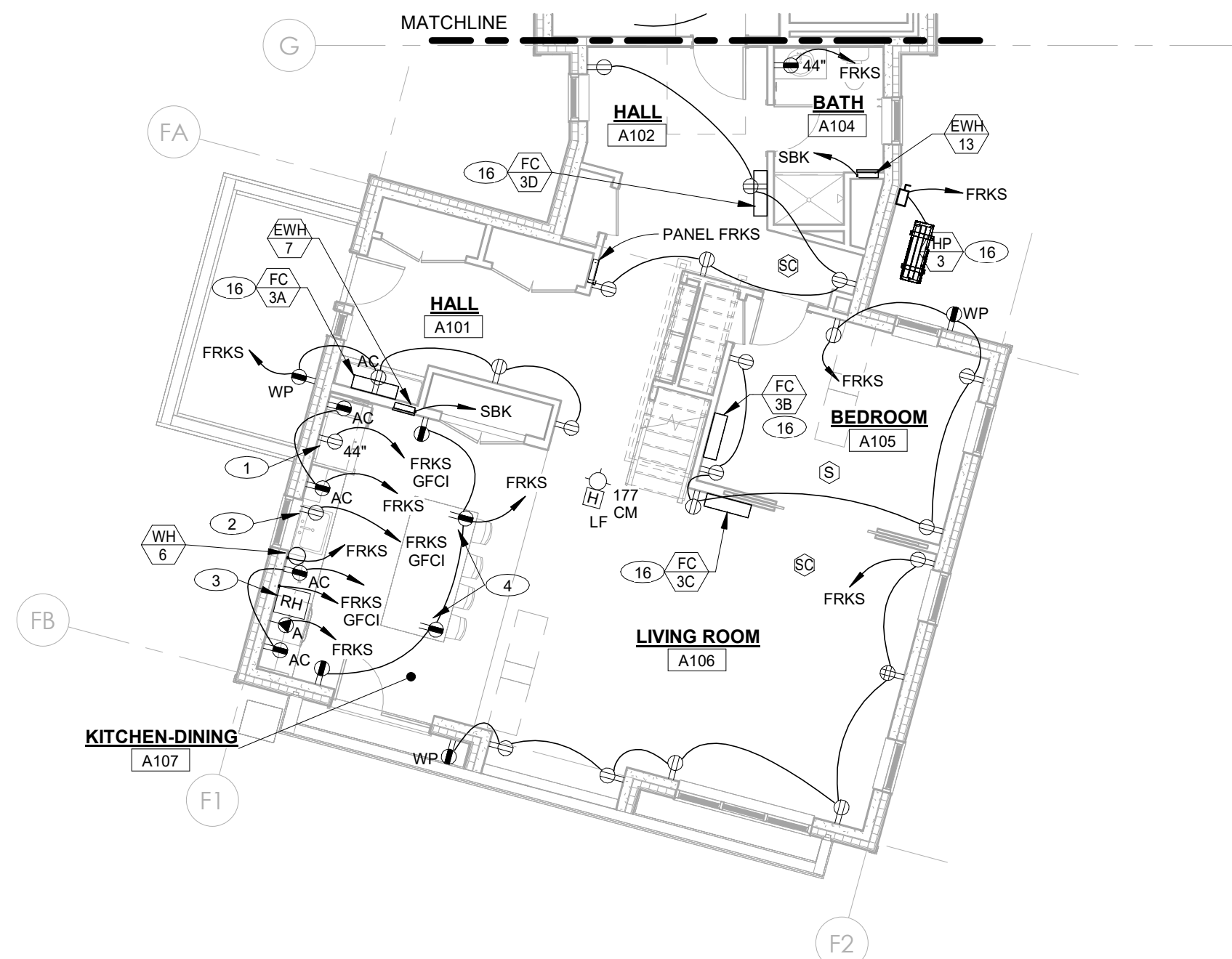


Alternates status as of 08/11/2023:

- Accepted: BP #1, alternate #1c: Kilton Faculty Residence A, and Residence B. Core and shell with interior framing, stair framing, exterior finishes, exterior doors, exterior windows, temporary railings at the stairs, fire alarm detectors, temporary lighting. No interior finishes, no insulation in wall cavities, no interior doors.
- NOT accepted: BP #1, alternate #2: Add - Welch renovations of 1600 SF, new 176 SF screen porch, and new 40 sf front canopy roof.
- NOT accepted: BP #1, alternate #3: Existing Kilton envelope upgrades.
- NOT accepted: BP #1, alternate #4: Pave remaining service driveway to just beyond relocated garage.
- NOT accepted: BP #1, alternate #5: reconstruct and pave service drive from relocated garage to service building.
- NOT accepted: BP #1, alternate #6: alternate window manufacturer.
- Accepted: BP #2: Existing Kilton Dorm renovations.
- NOT accepted: Existing Kilton Faculty Residence renovations.
- NOT accepted: BP #2, alternate #1: Welch Faculty residence fit-up.
- NOT accepted: BP #2, alternate #2: Kilton Faculty residence A fit-up.
- NOT accepted: BP #2, alternate #3: Kilton Faculty residence B fit-up.
- NOT accepted: BP #2, alternate #4: Welch existing faculty residence renovation.
- NOT accepted: BP #2, alternate #5: Kilton dorm lighting upgrade.
- NOT accepted: BP #2, alternate #6: Kilton & Welch upgrade heat pumps to DDC controls.
- NOT accepted: BP #2, alternate #7: Kilton add new air source heat pumps to existing Faculty.
- NOT accepted: BP #2, alternate #8: Kilton & Welch air-leakage control & aerobarrier add.
- Accepted: BP #2, alternate #9: Kilton & Welch add geothermal system.



POWER & SIGNAL FIRST FLOOR PLAN
Scale: 1/8" = 1'-0"



POWER & SIGNAL FIRST FLOOR PLAN SOUTH
Scale: 1/8" = 1'-0"

GENERAL NOTES:

REFER TO GENERAL NOTES ON DRAWING E1 WHICH APPLY TO THIS DRAWING, AS WELL AS ANY NOTES WHICH FOLLOW.

- THE WORK IN THE SOUTH AND EAST FACULTY RESIDENCES IS AFFECTED BY AN ALTERNATE. REFER TO THE BRIEF ALTERNATE DESCRIPTIONS ON DRAWING E1 AS WELL AS DESCRIPTION OF ALTERNATES IN THE DIVISION 1 PORTION OF THE SPECIFICATION.

DRAWING NOTES:

THESE DRAWING NOTES APPLY TO THIS DRAWING, ONLY.

- DEDICATED REFRIGERATOR CIRCUIT ON GFCI PROTECTED CIRCUIT BREAKER.
- DEDICATED DISHWASHER CIRCUIT ON GFCI PROTECTED CIRCUIT BREAKER. RECEPTACLE SHALL BE ACCESSIBLE THROUGH THE CABINETRY BELOW THE SINK.
- KITCHEN HOOD POWER CONNECTION ON GFCI PROTECTED CIRCUIT. SAME CIRCUIT SHALL SERVE ANY UNDERCABINET LIGHTING.
- LOCATE RECEPTACLE IN ISLAND CASEWORK, HORIZONTAL, ~4" BELOW UNDERSIDE OF COUNTER, AS PER NEC REQUIREMENTS. COORDINATE LOCATIONS OF DEVICES AND ROUTING OF WIRING CONCEALED WITHIN CABINETRY WITH CASEWORK INSTALLER.
- WALL MOUNTED TELEVISION OR MONITOR LOCATION. PROVIDE A FLUSH DEVICE STYLE BOX FOR POWER AND CABLING IN A COMMON, RECESSED MANNER. SEE LOW VOLTAGE DRAWINGS FOR COMMUNICATION DEVICE. BASIS OF DESIGN IS ARLINGTON TVS8613 STEEL MEDIA BOX. MOUNT ~66" AFF. UNLESS OTHERWISE NOTED. COORDINATE WITH ARCHITECT'S ELEVATION DRAWINGS. SUBMIT FLUSH MOUNTED BOX INFORMATION FOR APPROVAL.
- RECEPTACLE FOR WATER COOLER ON A DEDICATED GFCI PROTECTED CIRCUIT. CONCEAL RECEPTACLE BEHIND ACCESSIBLE ENCLOSURE OF THE WATER COOLER. COORDINATE WITH WATER COOLER INSTALLATION INSTRUCTIONS.
- CONNECT TO COMMON ELECTRIC BASEBOARD HEAT CIRCUIT IN PANEL LSK FOR EBB1, EBB2, EBB3.
- INSTALL RECEPTACLE HORIZONTALLY IN COUNTER BACKSPLASH.
- CONNECT TO THE LOCAL RECEPTACLE CIRCUIT.
- (NOT USED)
- PROVIDE A COMMON CIRCUIT FROM PANEL MK TO SERVE FC4, FC6, FC7, FC8, FC9.
- PROVIDE A COMMON CIRCUIT FROM PANEL MK TO SERVE FC5, FC10, FC11, FC12, FC13, FC14.
- (NOT USED)
- (NOT USED)
- PROVIDE WIRING FROM HP2 THROUGH ALL OF FC2A THROUGH FC2F.
- PROVIDE WIRING FROM HP3 THROUGH ALL OF FC3A THROUGH FC3H.
- PROVIDE A COMMON CIRCUIT FROM PANEL MK TO SERVE FC4A, FC4B, FC4C, FC4D, FC4E.
- PROVIDE WIRING FROM HP5 THROUGH ALL OF FC5A THROUGH FC5F.
- PROVIDE CIRCUIT FOR POWERED DOOR OPENER SYSTEMS. CONNECT DOOR OPENER, INTENDED WITH WIRELESS CONTROLS, FOR DOOR 117 AND 117A. COORDINATE WIRING REQUIREMENTS WITH THE SECURITY SYSTEM ELECTRIC STRIKES. LOCATE JUNCTION BOX WITH COVER PLATE AND CAPPED WIRING AT CEILING FOR FUTURE DOOR OPENER AT DOORS 118 AND 118A. COORDINATE LOCATIONS.

ANDREA MURRAY, AIA, NCARB, LEED AP
andrea@vermontintegratedarchitecture.com

ASHAR NELSON, AIA, LEED AP
ashar@vermontintegratedarchitecture.com

P.O. Box 862
Middlebury, VT 05753
802.989.7249

CIVIL ENGINEER

Nicholas Fiore, P.E.
Engineering Ventures
nikf@engineeringventures.com
802.863.6225

STRUCTURAL ENGINEER

Bob Neeld, P.E.
Engineering Ventures
bobn@engineeringventures.com
802.863.6225

MECH./PLUMBING ENGINEER

Daniel Dupras, P.E.
Engineering Services of Vermont, LLC
daniel.dupras@esvtllc.com
802.885.8091

ELECTRICAL ENGINEER

Claus Bartenstein, P.E., LEED-AP
Engineering Services of Vermont, LLC
claus.bartenstein@esvtllc.com
802.885.8091

CONSTRUCTION MANAGER

Calvin Russell, Senior Project Manager
Reach Company, Inc.
calvinr@reachcompany.com
802.863.8727

DATE ISSUED: 05/15/2023

Drawn: ESVT

Checked: CPB

REVISIONS:

#	Date	Description
1	08/22/23	Bulletin #9
2	01/02/24	Bulletin #21



PERMIT SET 05/15/2023

KUA
KILTON/WELCH
DORMITORIES

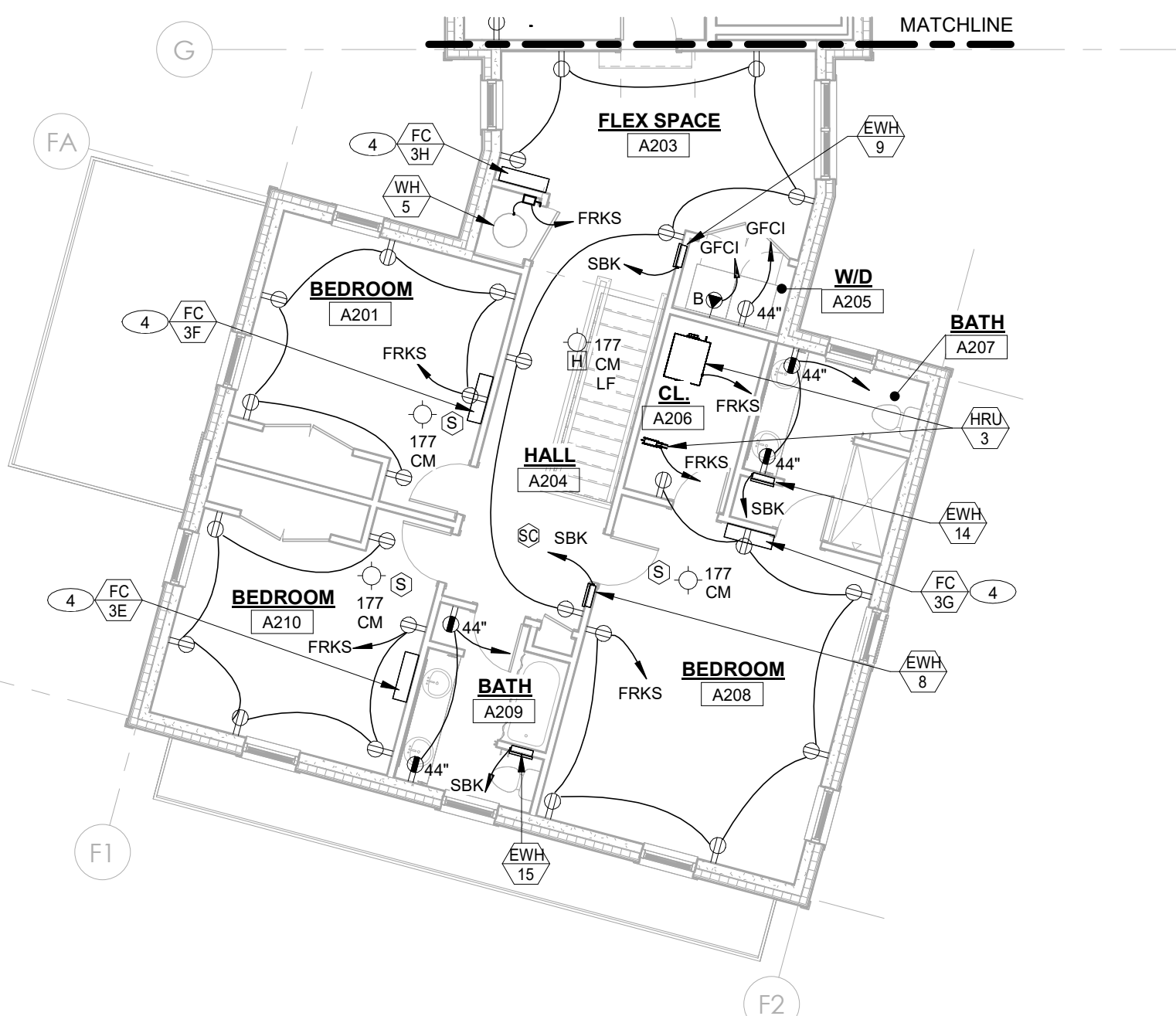
Main Street
Meriden, NH 03770

KILTON
POWER & SIGNAL
FIRST FLOOR

EK9



POWER & SIGNAL SECOND FLOOR PLAN
Scale: 1/8" = 1'-0"



POWER & SIGNAL SECOND FLOOR PLAN SOUTH
Scale: 1/8" = 1'-0"

GENERAL NOTES:

REFER TO GENERAL NOTES ON DRAWING E1 WHICH APPLY TO THIS DRAWING, AS WELL AS ANY NOTES WHICH FOLLOW.

- THE WORK IN THE SOUTH AND EAST FACULTY RESIDENCES IS AFFECTED BY AN ALTERNATE. REFER TO THE BRIEF ALTERNATE DESCRIPTIONS ON DRAWING E1 AS WELL AS DESCRIPTION OF ALTERNATES IN THE DIVISION 1 PORTION OF THE SPECIFICATION.

DRAWING NOTES:

THESE DRAWING NOTES APPLY TO THIS DRAWING, ONLY.

- WALL MOUNTED TELEVISION OR MONITOR LOCATION. PROVIDE A FLUSH DEVICE STYLE BOX FOR POWER AND CABLING IN A COMMON, RECESSED MANNER. BASIS OF DESIGN IS ARLINGTON TVSS813 STEEL MEDIA BOX. SEE LOW VOLTAGE DRAWINGS FOR COMMUNICATION DEVICE. MOUNT ~66" AFF. UNLESS OTHERWISE NOTED. COORDINATE WITH ARCHITECTS ELEVATION DRAWINGS. SUBMIT FLUSH MOUNTED BOX INFORMATION FOR APPROVAL.
- (NOT USED)
- PROVIDE WIRING FROM HP2 THROUGH ALL OF FC2A THROUGH FC2F.
- PROVIDE WIRING FROM HP3 THROUGH ALL OF FC3A THROUGH FC3H.
- PROVIDE A COMMON CIRCUIT FROM PANEL MK TO SERVE FC4F, FC4G, FC4H, FC4I.
- PROVIDE WIRING FROM HP5 THROUGH ALL OF FC5A THROUGH FC5F.
- PROVIDE A COMMON CIRCUIT FROM PANEL MK TO SERVE FC15, FC16, FC17, FC18, FC19.
- PROVIDE A COMMON CIRCUIT FROM PANEL MK TO SERVE FC20, FC21, FC23, FC24, FC25.
- FLOOR BOX WITH DUPLEX RECEPTACLE ON GFCI PROTECTED CIRCUIT. RECESSED ACTIVATION TYPE BOX FOR WOOD FLOOR, CAST COVER WITH CABLE GROMMETS AND CARPET INSERT. BASIS OF DESIGN IS LEGRAND RFBA SERIES. COVER FINISH AS SELECTED BY ARCHITECT.
- CONNECT TO THE LOCAL RECEPTACLE CIRCUIT.
- CONNECT TO COMMON ELECTRIC BASEBOARD HEAT CIRCUIT IN PANEL LSK FOR EBB1, EBB2, & EBB3.

Alternates status as of 08/11/2023:
• Accepted: BP #1, alternate #1c: Kilton Faculty Residence A, and Residence B: Core and shell with interior framing, stair framing, exterior finishes, exterior doors, exterior windows, temporary railings at the stairs, fire alarm detectors, temporary lighting. No interior finishes, no insulation in wall cavities, no interior doors.
• NOT accepted: BP #1, alternate #2: Add - Welch renovations of 1600 SF, new 176 SF screen porch, and new 40 sf front canopy roof.
• NOT accepted: BP #1, alternate #3: Existing Kilton envelope upgrades.
• NOT accepted: BP #1, alternate #4: Pave remaining service driveway to just beyond relocated garage.
• NOT accepted: BP #1, alternate #5: reconstruct and pave service drive from relocated garage to service building.
• NOT accepted: BP #1, alternate #6: alternate window manufacturer.
• Accepted: BP #2: Existing Kilton Dorm renovations.
• NOT accepted: Existing Kilton Faculty Residence renovations.
• NOT accepted: BP #2, alternate #1: Welch Faculty residence fit-up.
• NOT accepted: BP #2, alternate #2: Kilton Faculty residence A fit-up.
• NOT accepted: BP #2, alternate #3: Kilton Faculty residence B fit-up.
• NOT accepted: BP #2, alternate #4: Welch existing faculty residence renovation.
• NOT accepted: BP #2, alternate #5: Kilton dorm lighting upgrade.
• NOT accepted: BP #2, alternate #6: Kilton & Welch upgrade heat pumps to DDC controls.
• NOT accepted: BP #2, alternate #7: Kilton add new air source heat pumps to existing Faculty.
• NOT accepted: BP #2, alternate #8: Kilton & Welch air-leakage control & aerobarrier add.
• Accepted: BP #2, alternate #9: Kilton & Welch add geothermal system.



ANDREA MURRAY, AIA, NCARB, LEED AP
andrea@vermontintegratedarchitecture.com

ASHAR NELSON, AIA, LEED AP
ashar@vermontintegratedarchitecture.com

P.O. Box 862
Middlebury, VT 05753
802.989.7249

CIVIL ENGINEER

Nicholas Fiore, P.E.
Engineering Ventures
nikf@engineeringventures.com
802.863.6225

STRUCTURAL ENGINEER

Bob Neeld, P.E.
Engineering Ventures
bobn@engineeringventures.com
802.863.6225

MECH./PLUMBING ENGINEER

Daniel Dupras, P.E.
Engineering Services of Vermont, LLC
daniel.dupras@esvllc.com
802.885.8091

ELECTRICAL ENGINEER

Claus Bartenstein, P.E., LEED-AP
Engineering Services of Vermont, LLC
claus.bartenstein@esvllc.com
802.885.8091

CONSTRUCTION MANAGER

Calvin Russell, Senior Project Manager
Research Company, Inc.
calvin@researchcompany.com
802.863.8727

DATE ISSUED: 05/15/2023

Drawn: ESVT

Checked: CPB

REVISIONS:

#	Date	Description
1	01/02/24	Bulletin #21



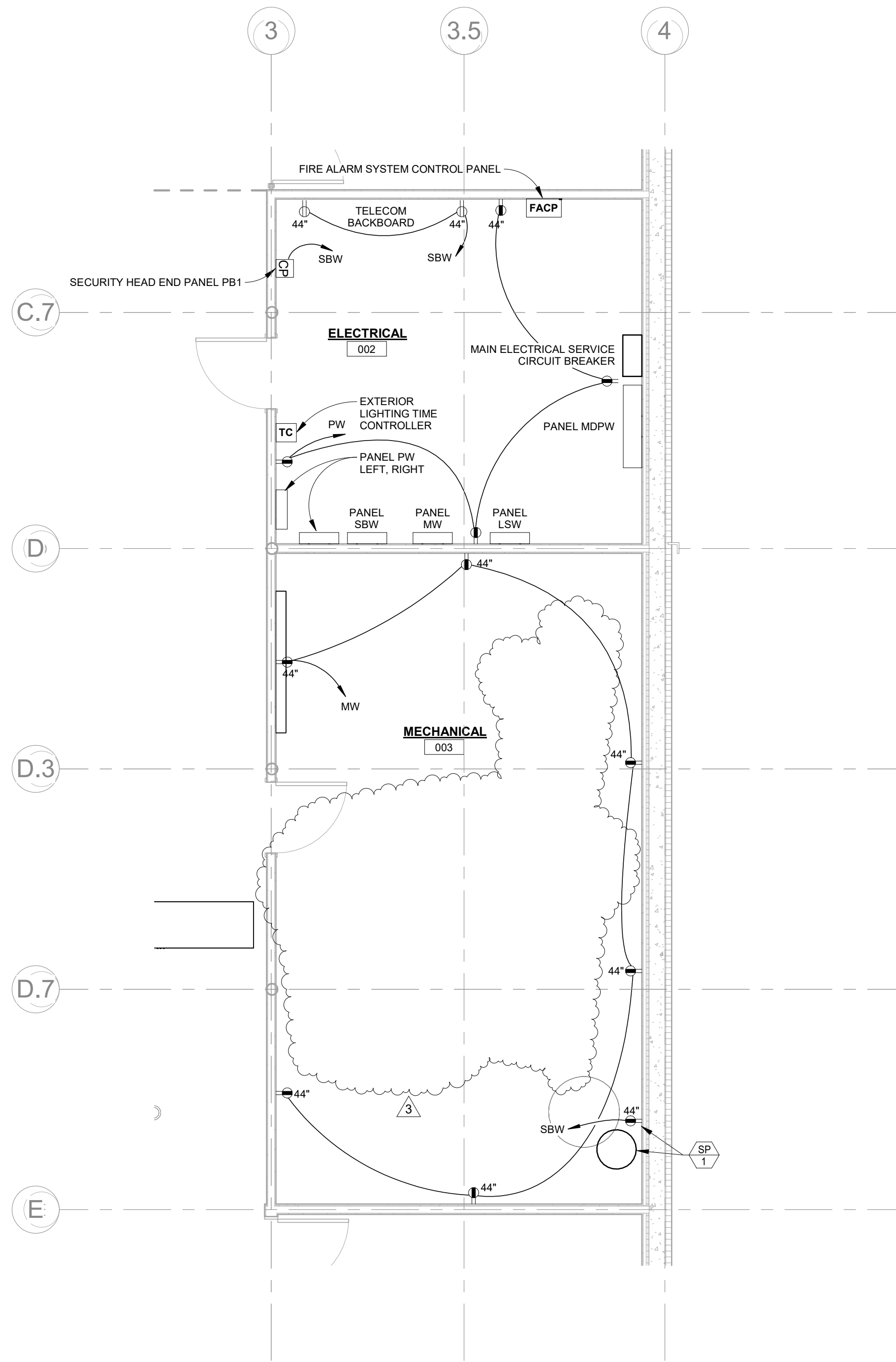
PERMIT SET 05/15/2023

KUA
KILTON/WELCH
DORMITORIES

Main Street
Meriden, NH 03770

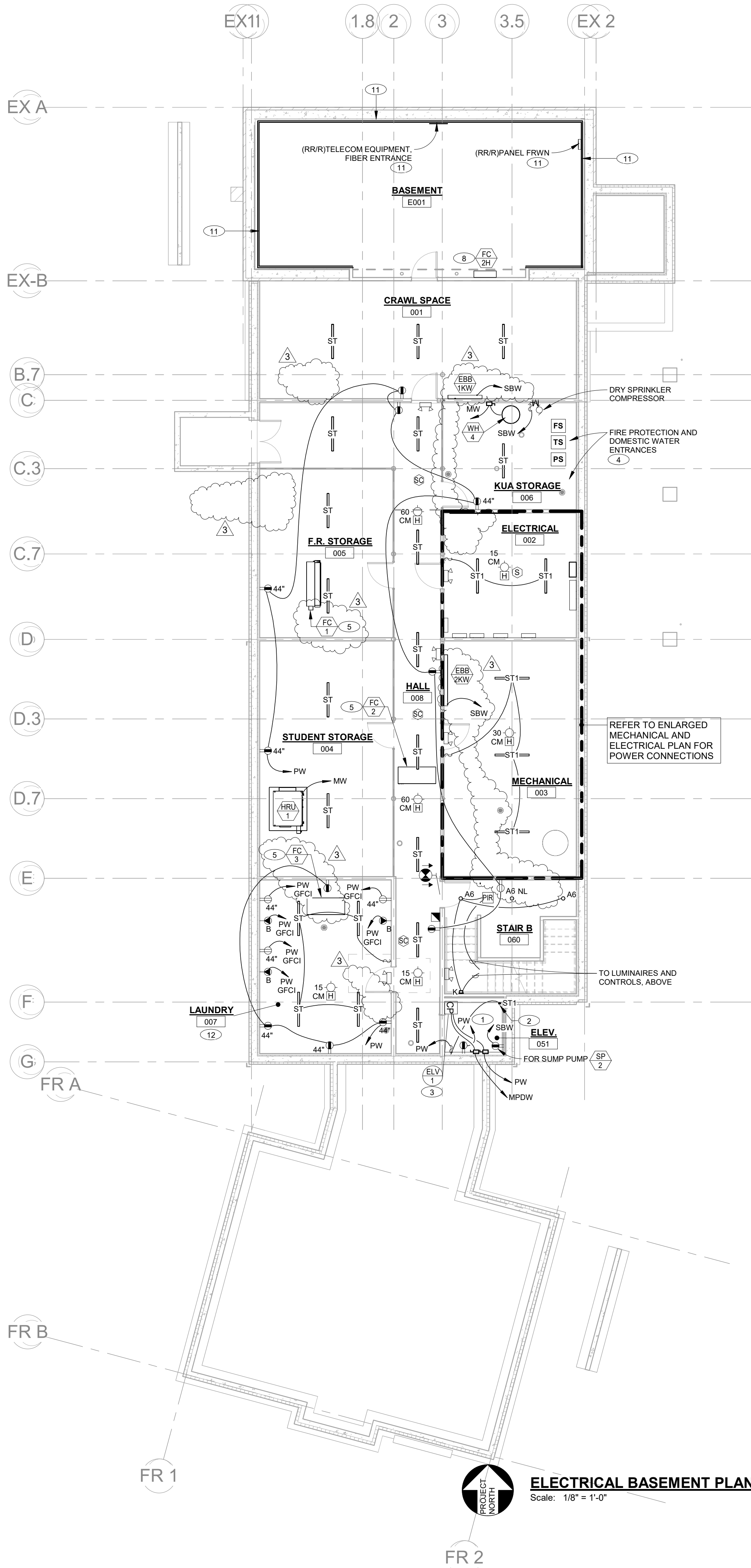
KILTON
POWER & SIGNAL
SECOND FLOOR

EK9.1



ENLARGED MECHANICAL ROOM

Scale: 1/4" = 1'-0"



ELECTRICAL BASEMENT PLAN

Scale: 1/8" = 1'-0"

GENERAL NOTES:

REFER TO DRAWING **EW11** FOR GENERAL NOTES WHICH APPLY TO THIS DRAWING. AS WELL AS ANY NOTES WHICH FOLLOW.

PROVIDE LIGHTING CIRCUITS AS FOLLOWS:

1. - NOTE NOT USED -
2. STAND-BY: PROVIDE A COMMON CIRCUIT IN PANEL SBW TO SERVE ALL LUMINAIRES IN:
A. 002 ELECTRICAL
B. 008 HALL
C. 060 STAIR B
3. PROVIDE A COMMON CIRCUIT IN PANEL PW TO SERVE ALL LUMINAIRES IN:
A. 001 CRAWL SPACE
B. 003 MECHANICAL
C. 004 STUDENT STORAGE
D. 005 F.R. STORAGE
E. 006 KUA STORAGE
F. 007 LAUNDRY

DRAWING NOTES:

THESE DRAWING NOTES APPLY TO THIS DRAWING, ONLY.

1. INSTALL SERVICE RECEPTACLE, SWITCH, LIGHT AND SUMP RECEPTACLE. COORDINATE LOCATIONS WITH APPROVED ELEVATOR SHOP DRAWING AND ELEVATOR INSTALLER PRIOR TO ROUGH-IN.
2. LOCATE A TYPE ST LUMINAIRE MOUNTED VERTICALLY IN CORNER OF SHAFT.
3. ELEVATOR CONTROLLER AND MACHINE IS INTEGRAL TO THE ELEVATOR FACING INTO THE CORRIDOR. PROVIDE POWER CONNECTIONS FOR ELEVATOR POWER, CAB LIGHTING AND A CAT6 POTS LINE FOR CAB TELEPHONE. PROVIDE A FIRE ALARM SYSTEM RELAY MODULE CONNECTION TO ELEVATOR CONTROLLER FOR ELEVATOR RECALL. COORDINATE FINAL LOCATIONS WITH APPROVED ELEVATOR SHOP DRAWING AND ELEVATOR INSTALLER.
4. PROVIDE MONITORING OF SPRINKLER FLOW, TAMPER AND PRESSURE SWITCHES BY THE FIRE ALARM SYSTEM. COORDINATE QUANTITY OF FIRE PROTECTION DEVICES TO BE MONITORED WITH THE APPROVED FIRE PROTECTION SHOP DRAWING AND SYSTEM INSTALLER.
5. PROVIDE A COMMON CIRCUIT FROM PANEL SBW TO SERVE FC1, FC2, FC3.
6. (NOT USED)
7. (NOT USED)
8. (NOT USED)
9. (NOT USED)
10. PROVIDE WIRING FROM HP2 THROUGH ALL OF FC2A THROUGH FC2H.
11. THE INTERIOR OF THE EXTERIOR WALLS OF THE EXISTING FACULTY RESIDENCE BASEMENT WILL BE INSULATED AND SEALED. THIS CONTRACTOR SHALL REWORK EXISTING DEVICES AND EQUIPMENT ON THESE WALLS TO ACCOMMODATE THIS ENVELOP WORK. REINSTALLING DEVICES IN APPROXIMATELY THE SAME LOCATION IN THE NEW WALL SURFACES.
 - ALL RECEPTACLE DEVICES SHALL BE REPLACED WITH NEW, TAMPER-RESISTANT DEVICES.
 - PANELBOARD FRWN WILL HAVE TO BE REMOVED FROM THE WALL AND THEN REINSTALLED ON INTERIOR OF PADDED WALL, PROVIDE PLYWOOD BACKBOARD SUPPORT AS NECESSARY
 - TELECOM BACKBOARD WILL HAVE TO BE REMOVED FROM THE WALL AND REINSTALLED ON INTERIOR OF PADDED WALL, PROVIDE PLYWOOD BACKBOARD SUPPORT AS NECESSARY
12. COORDINATE AND VERIFY LAUNDRY CIRCUITS, PRIOR TO ROUGH IN, WITH THE OWNERS PROVIDED EQUIPMENT.

Alternates status as of 08/11/2023:

- Accepted: BP #1, alternate #1c: Kilton Faculty Residence A, and Residence B: Core and shell with interior framing, stair framing, exterior finishes, exterior doors, exterior windows, temporary railings at the stairs, fire alarm detectors, temporary lighting. No interior finishes, no insulation in wall cavities, no interior doors.
- NOT accepted: BP #1, alternate #2: Add - Welch renovations of 1600 SF, new 176 SF screen porch, and new 40 sf front canopy roof.
- NOT accepted: BP #1, alternate #3: Existing Kilton envelope upgrades.
- NOT accepted: BP #1, alternate #4: Pave remaining service driveway to just beyond relocated garage.
- NOT accepted: BP #1, alternate #5: reconstruct and pave service drive from relocated garage to service building.
- NOT accepted: BP #1, alternate #6: alternate window manufacturer.
- Accepted: BP #2: Existing Kilton Dorm renovations.
- NOT accepted: Existing Kilton Faculty Residence renovations.
- NOT accepted: BP #2, alternate #1: Welch Faculty residence fit-up.
- NOT accepted: BP #2, alternate #2: Kilton Faculty residence A fit-up.
- NOT accepted: BP #2, alternate #3: Kilton Faculty residence B fit-up.
- NOT accepted: BP #2, alternate #4: Welch existing faculty residence renovation.
- NOT accepted: BP #2, alternate #5: Kilton dorm lighting upgrade.
- NOT accepted: BP #2, alternate #6: Kilton & Welch upgrade heat pumps to DDC controls.
- NOT accepted: BP #2, alternate #7: Kilton add new air source heat pumps to existing faculty.
- NOT accepted: BP #2, alternate #8: Kilton & Welch air-leakage control & aerobarrier add.
- Accepted: BP #2, alternate #9: Kilton & Welch add geothermal system.



ANDREA MURRAY, AIA, NCARB, LEED AP
andrea@vermontintegratedarchitecture.com

ASHAR NELSON, AIA, LEED AP
ashar@vermontintegratedarchitecture.com

P.O. Box 862
Middlebury, VT 05753
802.989.7249

CIVIL ENGINEER

Nicholas Fiore, P.E.
Engineering Ventures
nikf@engineeringventures.com
802.863.6225

STRUCTURAL ENGINEER

Bob Neeld, P.E.
Engineering Ventures
bobn@engineeringventures.com
802.863.6225

MECH./PLUMBING ENGINEER

Daniel Dupras, P.E.
Engineering Services of Vermont, LLC
daniel.dupras@esvllc.com
802.885.8091

ELECTRICAL ENGINEER

Claus Bartenstein, P.E., LEED-AP
Engineering Services of Vermont, LLC
claus.bartenstein@esvllc.com
802.885.8091

CONSTRUCTION MANAGER

Calvin Russell, Senior Project Manager
ReArch Company, Inc.
calvinr@rearchcompany.com
802.863.8727

DATE ISSUED: 05/15/2023

Drawn: ESVT

Checked: CPB

REVISIONS:

#	Date	Description
1	08/22/23	Bulletin #9
2	09/26/23	Bulletin #13 RFI 044
3	02/19/24	Bulletin #25



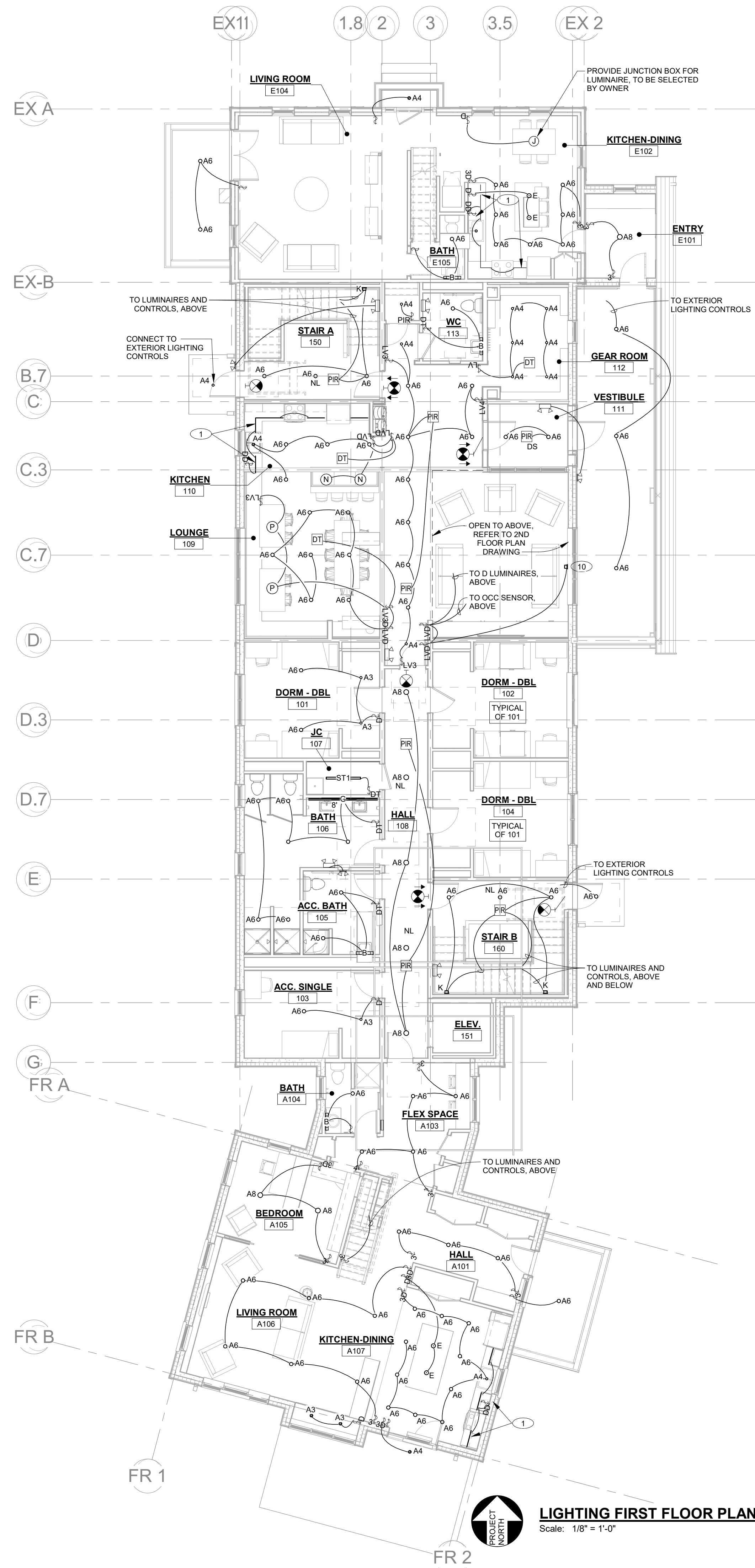
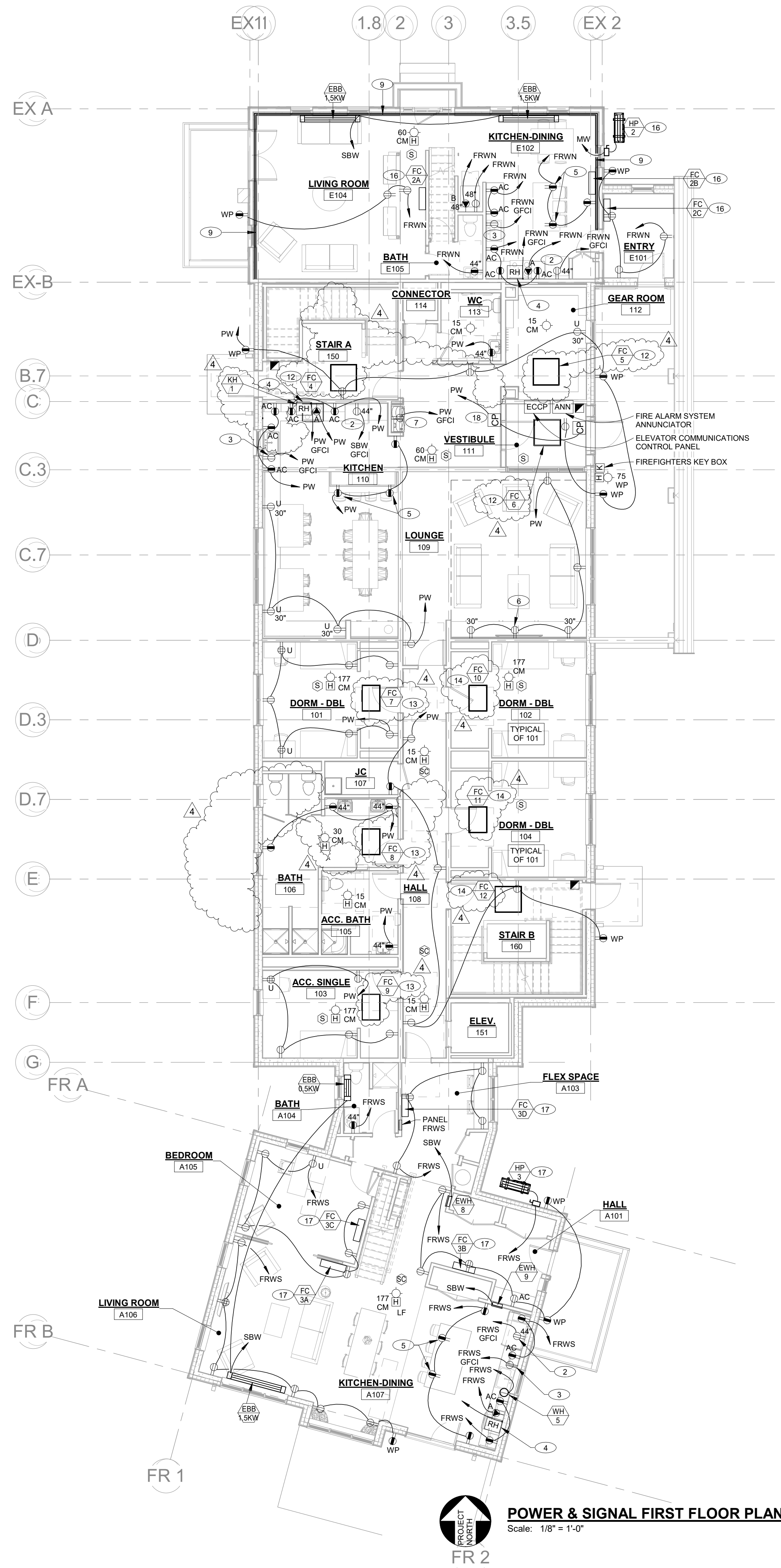
PERMIT SET 05/15/2023

**KUA
KILTON/WELCH
DORMITORIES**

Main Street
Meriden NH, 03770

**WELCH
ELECTRICAL
BASEMENT**

EW12



GENERAL NOTES:

REFER TO DRAWING E101 FOR GENERAL NOTES WHICH APPLY TO THIS DRAWING. AS WELL AS ANY NOTES WHICH FOLLOW.

PROVIDE LIGHTING CIRCUITS AS FOLLOWS:

1. - NOTE NOT USED -
2. STAND-BY: PROVIDE A COMMON CIRCUIT IN PANEL SBW TO SERVE ALL LUMINAIRES IN:
A. 105 BATH
B. 106 ADA BATH
C. 108 HALL
D. 109 LOUNGE
E. 111 VESTIBULE
F. 113 WATER CLOSET
G. 150 STAIR A
H. 160 STAIR B
3. PROVIDE A COMMON CIRCUIT IN PANEL PW TO SERVE ALL LUMINAIRES IN THE BALANCE OF THE FIRST FLOOR DORMITORY.
4. PROVIDE A COMMON CIRCUIT IN PANEL FRWS TO SERVE ALL LUMINAIRES IN THE FACULTY RESIDENCE "A" (SOUTH).
5. REWORK AND EXTEND EXISTING LIGHTING CIRCUITS IN THE EXISTING FACULTY RESIDENCE (NORTH) TO NEW LUMINAIRES VIA CONTROLS.

DRAWING NOTES:

THESE DRAWING NOTES APPLY TO THIS DRAWING, ONLY.

1. MOUNT TYPE UC UNDERCABINET LED TAPE LUMINAIRES TO UNDERSIDE OF CABINETRY - 1" BACK FROM THE FRONT UNDERSIDE FRAME. CONCEALED BY BOTTOM UP OF THE CABINET. PROVIDE LENGTHS AS NECESSARY. PROVIDE DIMMER SWITCH INCORPORATING BOTH ON/OFF/DIMMING CONTROL AND DRIVER. CONCEAL ALL CABLING FROM VIEW. SECURE ATTACHING AND RUN AT UNDERSIDE OF CABINETRY. CONNECT TO UNSWITCHED PORTION OF GFCI PROTECTED CIRCUIT SERVING THE RANGE HOOD.
2. DEDICATED REFRIGERATOR CIRCUIT ON GFCI PROTECTED CIRCUIT BREAKER.
3. DEDICATED DISHWASHER CIRCUIT ON GFCI PROTECTED CIRCUIT BREAKER. RECEPTACLE SHALL BE ACCESSIBLE THROUGH THE CABINETRY BELOW THE SINK.
4. KITCHEN HOOD POWER CONNECTION ON GFCI PROTECTED CIRCUIT. SAME CIRCUIT SHALL SERVE ANY UNDERCABINET LIGHTING.
5. LOCATE RECEPTACLE IN ISLAND CASEWORK, HORIZONTAL, 4" BELOW UNDERSIDE OF COUNTER, AS PER NEC REQUIREMENTS. COORDINATE LOCATIONS OF DEVICES AND ROUTING OF WIRING CONCEALED WITHIN CABINETRY WITH CASEWORK INSTALLER.
6. WALL MOUNTED TELEVISION OR MONITOR LOCATION. PROVIDE A FLUSH DEVICE STYLE BOX FOR POWER AND CABLING IN A COMMON, RECESSED MANNER. SEE LOW VOLTAGE DRAWINGS FOR COMMUNICATION DEVICES. BASIS OF DESIGN IS ARLINGTON TV/S613 STEEL MEDIA BOX. MOUNT -66" AFF, UNLESS OTHERWISE NOTED. COORDINATE WITH ARCHITECTS ELEVATION DRAWINGS. SUBMIT FLUSH MOUNTED BOX INFORMATION FOR APPROVAL.
7. RECEPTACLE FOR WATER COOLER ON A DEDICATED GFCI PROTECTED CIRCUIT. CONCEAL RECEPTACLE BEHIND ACCESSIBLE ENCLOSURE OF THE WATER COOLER. COORDINATE WITH WATER COOLER INSTALLATION INSTRUCTIONS.
8. FLOOR BOX WITH DUPLEX RECEPTACLE ON GFCI PROTECTED CIRCUIT. RECESSED ACTIVATION TYPE BOX FOR CONCRETE FLOOR. CAST COVER WITH CABLE GROMMETS AND CARPET INSERT. BASIS OF DESIGN IS LEGRAND RFB4 SERIES. COVER FINISH AS SELECTED BY ARCHITECT.
9. THE INTERIOR OF THE EXTERIOR WALLS OF THE EXISTING FACULTY RESIDENCE WILL BE REMOVED AND ENVELOP OF THE BUILDING SEALED AND INSULATED AND WALLS PADDED INWARD. THIS CONTRACTOR SHALL REWORK EXISTING RECEPTACLE AND TELECOM DEVICES IN THESE WALLS TO ACCOMMODATE THIS ENVELOP OF WORK. REINSTALL DEVICES IN APPROXIMATELY THE SAME LOCATION IN THE NEW WALL SURFACES.
 - ALL RECEPTACLE DEVICES SHALL BE REPLACED WITH NEW, TAMPER-RESISTANT DEVICES.
 - THE BUILDING WAS OCCUPIED WITH FURNISHINGS AT THE TIME FIELD WORK WAS PERFORMED, SO THERE IS NOT AN EXACT NUMBER OF DEVICES. ASSUME 10 DEVICES ON THE FIRST FLOOR AND 10 DEVICES ON THE SECOND FLOOR AND PROVIDE A UNIT PRICE FOR ANY ADDITIONAL BEYOND THESE 20 DEVICES.

10. CENTER LUMINAIRE IN-BETWEEN THE UPPER AND LOWER WINDOWS.
11. (NOT USED).
12. PROVIDE A COMMON CIRCUIT FROM PANEL SBW TO SERVE FC4, FC5, FC6.
13. PROVIDE A COMMON CIRCUIT FROM PANEL SBW TO SERVE FC7, FC8, FC9.
14. PROVIDE A COMMON CIRCUIT FROM PANEL SBW TO SERVE FC10, FC11, FC12.
15. (NOT USED).
16. PROVIDE WIRING FROM HP2 THROUGH ALL OF FC2A THROUGH FC2H.
17. PROVIDE WIRING FROM HP3 THROUGH ALL OF FC3A THROUGH FC3G.
18. PROVIDE CIRCUIT FOR POWERED DOOR OPENER SYSTEMS. CONNECT DOOR OPENER, INTENDED WITH WIRELESS CONTROLS, FOR DOOR 111 AND 111A. COORDINATE WIRING REQUIREMENTS WITH THE SECURITY SYSTEM ELECTRIC STRIKES.

Alternates status as of 08/11/2023:

- Accepted: BP #1, alternate #1c: Kilton Faculty Residence A, and Residence B: Core and shell with interior framing, stair framing, exterior finishes, exterior doors, exterior windows, temporary railings at the stairs, fire alarm detectors, temporary lighting. No interior finishes, no insulation in wall cavities, no interior doors.
- NOT accepted: BP #1, alternate #2: Add - Welch renovations of 1600 SF, new 176 SF screen porch, and new 40 sf front canopy roof.
- NOT accepted: BP #1, alternate #3: Existing Kilton envelope upgrades.
- NOT accepted: BP #1, alternate #4: Pavement remaining service driveway to just beyond relocated garage.
- NOT accepted: BP #1, alternate #5: reconstruct and pave service drive from relocated garage to service building.
- NOT accepted: BP #1, alternate #6: alternate window manufacturer.
- Accepted: BP #2: Existing Kilton Dorm renovations.
- NOT accepted: Existing Kilton Faculty Residence renovations.
- NOT accepted: BP #2, alternate #1: Welch Faculty residence fit-up.
- NOT accepted: BP #2, alternate #2: Kilton Faculty residence A fit-up.
- NOT accepted: BP #2, alternate #3: Kilton Faculty residence B fit-up.
- NOT accepted: BP #2, alternate #4: Welch existing faculty residence renovation.
- NOT accepted: BP #2, alternate #5: Kilton dorm lighting upgrade.
- NOT accepted: BP #2, alternate #6: Kilton & Welch upgrade heat pumps to DDC controls.
- NOT accepted: BP #2, alternate #7: Kilton add new air source heat pumps to existing Faculty.
- NOT accepted: BP #2, alternate #8: Kilton & Welch air-leakage control & aerobarrier add.
- Accepted: BP #2, alternate #9: Kilton & Welch add geothermal system.

ANDREA MURRAY, AIA, NCARB, LEED AP
andrea@vermontintegratedarchitecture.com

ASHAR NELSON, AIA, LEED AP
ashar@vermontintegratedarchitecture.com

P.O. Box 862
Middlebury, VT 05753
802.989.7249

CIVIL ENGINEER

Nicholas Fiore, P.E.
Engineering Ventures
nikf@engineeringventures.com
802.863.6225

STRUCTURAL ENGINEER

Bob Neeld, P.E.
Engineering Ventures
bobn@engineeringventures.com
802.863.6225

MECH./PLUMBING ENGINEER

Daniel Dupras, P.E.
Engineering Services of Vermont, LLC
daniel.dupras@esvllc.com
802.885.8091

ELECTRICAL ENGINEER

Claus Bartenstein, P.E., LEED-AP
Engineering Services of Vermont, LLC
claus.bartenstein@esvllc.com
802.885.8091

CONSTRUCTION MANAGER

Calvin Russell, Senior Project Manager
Research Company, Inc.
calvinr@researchcompany.com
802.863.8727

DATE ISSUED: 05/15/2023

Drawn: ESVT

Checked: CPB

REVISIONS:

#	Date	Description
1	08/22/23	Bulletin #9
2	09/26/23	Bulletin #13 RFI 044
3	02/12/24	LOUNGE LIGHTING
4	02/19/24	Bulletin #25



PERMIT SET 05/15/2023

KUA
KILTON/WELCH
DORMITORIES

Main Street
Meriden NH, 03770

WELCH
ELECTRICAL
FIRST FLOOR

EW13



EW14