

## **VIII. POPULATION**

### **INTRODUCTION**

Since one of the purposes of a master plan is to provide and improve facilities for people's lives, work and families, an analysis of changing trends in a town's population is of basic importance. Any significant changes in the population will consequently affect land use patterns, the town's economic base, and local demand for housing, transportation, human services and community facilities. Awareness of shifts in the population composition is also prerequisite for planning; specifically, changes in the school age and elderly populations could require corresponding reviews of educational, housing and service policies.

Three facets of Plainfield's population are examined here. First, natural increase and migration patterns affecting Plainfield's population growth are analyzed. Then, the age distribution of Plainfield residents is considered. Finally, population projections through the year 2020 for the Town are set forth, indicating the degree of change which may be expected in the next 20 years.

Information for this report was derived from a variety of sources. The U.S. Census of Population and ACS Estimates provided most of the data. Publications from the New Hampshire Office of Energy and Planning (OEP) also served as input.

### **POPULATION GROWTH**

Plainfield's population began to slowly increase after 1920 and climbed from 1,050 in 1950 to 2346 in 2010. The rate of growth accelerated in the late 1960's and 1970's but has decreased significantly in the last two decades. The growth has been due to increasing employment opportunities in the neighboring communities of Lebanon, Hanover, Claremont and Hartford. A variety of employers required an increasingly large labor force. Selecting these new employment opportunities resulted in a changed lifestyle for many Plainfield residents and the near extinction of the small farm. With the influx of newcomers and a change in economic structure, Plainfield has been successful in largely retaining its rural charm and desirability as a residential community.

Tables VIII-1 and VIII-2, and Chart VIII-1, on the following pages, present the historical trend of Plainfield's population growth. Table VIII-2 shows that from a peak of 11% in 1790, Plainfield has been a slowly decreasing proportion of Sullivan County's population until 1930. After an early twenty-year surge, the Town's population growth did not keep pace with that of the County as a whole, and the Town's share of County population fell to only 3.5%. Since 1930, however, Plainfield has grown fast enough to raise its share of the County population to 5.4 % in the year 2010.

The growth experienced by Plainfield since 1960 has resulted in rapid development of its land base. Table VIII-3 summarizes the population density of selected communities in the Upper Valley Region. Plainfield's land area is slightly larger than most of its neighbors. With a population of 2241, the Town is one of the more sparsely settled communities in the area, having a density of 42.3 persons per square mile. Only Croydon (17.6 persons per square mile) and Cornish (30.0 persons per square mile) have lower population density; on the other hand, Lebanon (304.3 persons per square mile) and Claremont (298.2 persons per square mile) are seven times as densely populated.

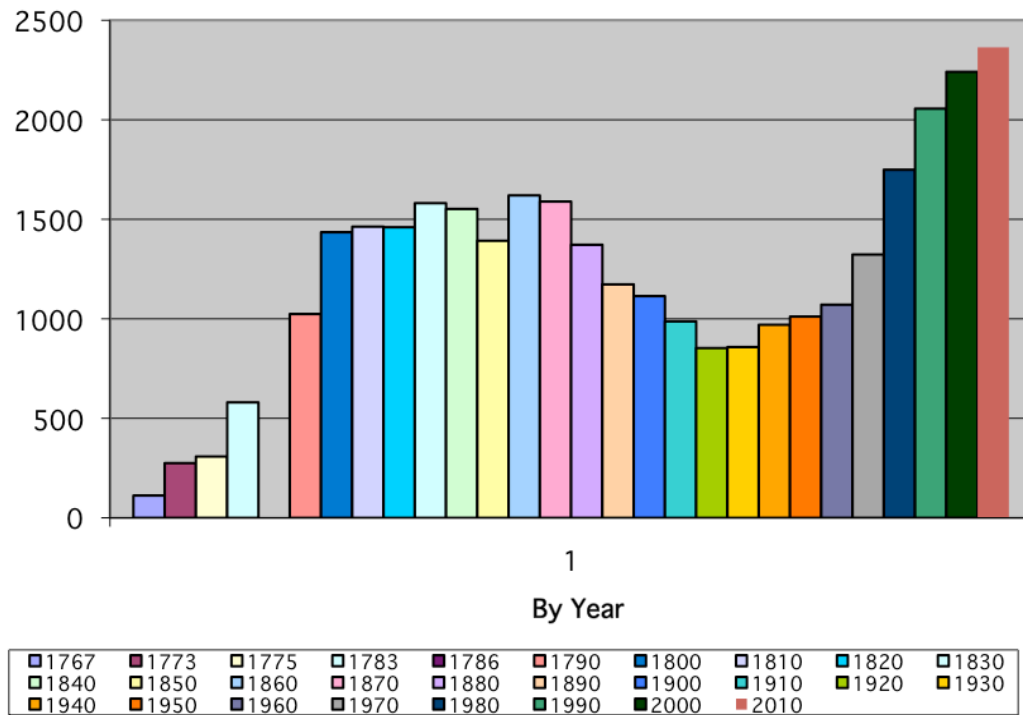
**TABLE VIII-1**  
**HISTORICAL POPULATION TRENDS**  
 Plainfield, Tri-Town Area\*, Sullivan County, New Hampshire; 1767-2010

<b>UPPER VALLEY HISTORICAL POPULATION</b>								
Year	Plainfield	% Chg	Tri-Town*	% Chg	Sullivan County	% Chg	State of NH	% Chg
1767	112				816			
1773	275	145.6			2,184	167.6		
1775	308	12			2,610	19.5		
1783	-				2,595	-0.6		
1786	580	-			6,259	141.2		
1790	1024	76.6	3548		9,107	45.5	141,885	
1800	1435	40.1	4980	40.4	14,537	59.6	183,858	29.6
1810	1463	2	5774	15.9	16,514	13.6	214,460	16.6
1820	1460	-0.2	5942	2.9	18,533	12.2	244,161	13.9
1830	1581	8.3	6273	5.8	19,669	6.1	269,328	10.3
1840	1552	-1.8	6708	6.5	20,340	3.4	284,574	5.7
1850	1392	10.3	6645	-0.1	19,375	-4.7	317,976	11.7
1860	1620	16.4	7026	5.7	19,041	-1.7	326,073	2.6
1870	1589	-1.9	7659	9	18,058	-5.2	318,300	-2.4
1880	1372	-13.7	8455	10.4	18,161	0.6	346,991	9.0
1890	1173	-14.5	9320	10.2	17,304	-4.7	376,530	8.5
1900	1114	-5	10666	14.4	18,009	4.1	411,588	9.3
1910	987	-11.4	11972	12.2	19,337	7.4	430,572	4.6
1920	853	-13.6	13165	9.9	20,922	8.2	443,083	2.9
1930	858	0.6	15004	13.9	24,286	16.1	465,293	5.0
1940	970	13.1	15994	6.6	25,442	4.8	491,524	5.6
1950	1011	4.2	20581	28.7	26,441	3.9	533,242	8.5
1960	1071	5.9	22983	11.7	28,067	6.1	606,921	13.8
1970	1323	23.5	24696	7.5	30,949	10.3	737,578	21.5
1980	1749	32.2	28216	14.3	36,063	16.5	920,475	27.8
1990	2056	17.6	30799	9.2	38,592	7	1,109,252	20.5
2000	2241	1.9	33786	9.7	40,458	4.8	1,235,786	11.4
2010	2364	1.1	34360	1.7	43,742	8.1	1,316,470	6.5

\*Hartford, Hanover, Lebanon

**SOURCE:** U.S. Census

Chart VIII-1  
PLAINFIELD POPULATION  
1767-2010



**TABLE VIII-2**  
**RELATIVE SHARES OF POPULATION**  
**PLAINFIELD, SULLIVAN COUNTY, NEW HAMPSHIRE, U.S.A.; 1767-2010**

Year	Plainfield	% of Sullivan County	Sullivan County	% of NH	NH State	% US	U.S.A.
1767	112	13.7	816	-	-	-	-
1773	275	12.6	2,184	-	-	-	-
1775	308	11.8	2,610	-	-	-	-
1783	580	22.4	2,595	-	-	-	-
1786			6,259	-	-	-	-
1790	1,024	11.2	9,107	6.4	141,885	3.61	3,929,214
1800	1,435	9.9	14,537	7.9	183,858	3.46	5,308,483
1810	1,463	8.9	16,514	7.7	214,460	2.96	7,239,881
1820	1,460	7.9	18,533	7.6	244,161	2.53	9,638,453
1830	1,581	8	19,669	7.3	269,328	2.09	12,866,029
1840	1,552	7.6	20,340	7.1	284,574	1.66	17,069,453
1850	1,392	7.2	19,375	6.1	317,976	1.37	23,191,876
1860	1,620	8.5	19,041	5.8	326,073	1.03	31,443,321
1870	1,589	8.8	18,058	5.7	318,300	0.80	39,818,449
1880	1,372	7.6	18,161	5.2	346,991	0.69	50,155,783
1890	1,173	6.8	17,304	4.6	376,530	0.60	62,947,714
1900	1,114	6.2	18,000	4.4	411,588	0.54	75,994,575
1910	987	5.1	19,337	4.5	430,572	0.47	92,228,496
1920	853	4.1	20,922	4.7	443,083	0.42	106,021,537
1930	858	3.5	24,286	5.2	465,293	0.38	123,202,624
1940	970	3.8	25,442	5.2	491,524	0.37	132,164,569
1950	1,011	3.8	26,441	5.0	533,242	0.35	151,325,798
1960	1,071	3.8	28,067	4.6	606,921	0.34	179,323,175
1970	1,323	4.3	30,949	4.2	737,578	0.36	203,211,926
1980	1,749	4.8	36,063	3.9	920,475	0.40	226,504,825
1990	2,056	5.3	38,592	3.5	1,109,252	0.40	248,710,000
2000	2,241	5.5	40,458	3.3	1,235,786	0.44	281,421,906
2010	2,364	5.4	43,742	3.3	1,316,470	0.43	308,745,538

**TABLE VIII-3  
POPULATION DENSITY IN SELECTED  
UPPER VALLEY-LAKE SUNAPEE REGION COMMUNITIES  
1960-2010**

Town	Land Area Square miles	Persons Per Square Mile					
		1960	1970	1980	1990	2000	2010
Plainfield	53.0	20.2	25.0	33.0	37.9	42.3	44.6
Claremont	44.1	307.6	322.8	330.5	315.6	289.2	302.8
Cornish	42.6	26.0	29.8	32.6	38.9	39.0	38.5
Croydon	37.5	8.32	10.5	12.2	16.7	17.6	20.3
Enfield	43.1	43.3	54.3	73.6	92.2	107.1	106.3
Grantham	28.0	11.9	13.0	25.1	44.5	77.4	106.6
Hanover	50.1	146.3	169.4	181.9	183.7	216.6	224.75
Hartford	46.0	138.2	140.8	173.1	204.5	225.4	216.3
Lebanon	41.3	225.2	235.6	269.8	295.2	304.3	318.4
Newport	43.6	125.2	135.2	142.7	147.6	143.8	149.2

SOURCE:, U.S. Census

Even with its large land base and relatively low density, Plainfield must plan wisely for the future to assure that the Town grows in a desirable manner. Growth increases density, which, in turn, decreases the amount of open space, places greater demand on local resources, and increases the possibility of conflicting land uses. The planning that Plainfield does now can preclude untimely and unmanageable future expansion.

### NATURAL INCREASE AND MIGRATION

The two components of population change are natural increase and migration. Natural increase is defined as the excess of resident births over deaths; migration refers to the number of people moving into and out of a town. If a community has little in- and out-migration, almost all changes in population are attributable to natural factors alone. The change in Plainfield's population is broken down as follows:

The population at the close of a period is equal to the population at the start of the period plus natural increase during the period, plus net migration during the period.

During the decade of the 1970's, Plainfield's total population increased by 426 residents, or 32%. Natural increase accounted for 34% of the change and the remainder, 280 people or 66% of the newcomers, were in-migrants.

During the 1980's, population growth slowed. The total population increase was 307 residents, a 17.5% increase. During that time, 38% of the population increase (118 people) can be attributed to natural increase, and 62% (189 people) was the result of in-migration.

During the 90's a smaller population increase occurred of only 185 persons of which 75 were attributable to natural increase and 110 were due to in-migration.

From 2000 to 2010, the inward migration accounted for 75% of the increase in population.

### AGE DISTRIBUTION

Understanding the age composition of a community is vital in planning for future needs. A change in the school age population, for example, may indicate a need for modification in educational policies. Likewise, a shift to a more elderly population would require that a different type and range of services and facilities be developed. The median age of Plainfield residents is slightly younger than Sullivan County and slightly older than the New Hampshire median, as the table below shows. In addition, this table shows a general aging trend taking place in the past two decades in all three geographic regions, as it has nationally.

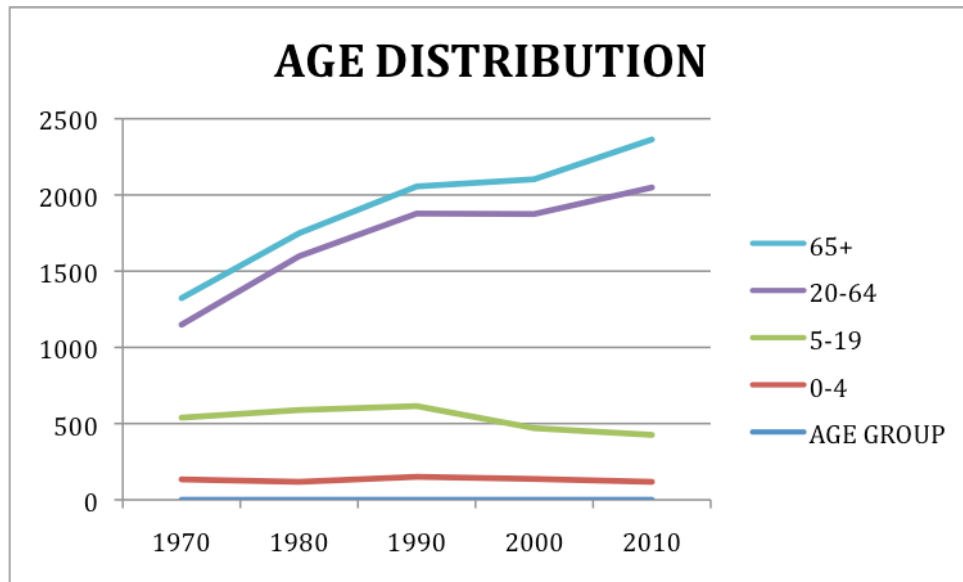
**TABLE VIII-4  
MEDIAN AGES  
PLAINFIELD, SULLIVAN COUNTY, NEW HAMPSHIRE**

<b><i>MEDIAN AGES</i></b>					
<b>Geography</b>	1970	1980	1990	2000	2010
<b>Plainfield</b>	26.7	30.0	34.5	40.0	45.2
<b>Sullivan County</b>	30.0	31.6	35.3	40.0	43.9
<b>New Hampshire</b>	27.8	30.1	32.8	37.1	41.1

SOURCE: U.S. Census; 1970, 1980, 1990, 2000, 2010

Table VIII-4 shows median age at decennial for select geography's. Chart VIII-5 shows age distribution by age group. The effect of the net in-migration to Plainfield shows up in the 20-64 age group. This is the group with the greatest numerical and percentage increase. It is interesting to note that the 5-19 age group (the school age population) has been relatively stable up to 1990, in part due to in-migration, but in steady decline in the last 20 years..

### CHART VIII-5 HISTOGRAM OF AGE DISTRIBUTION



#### Census Demographic Data

Chart VIII-5 above and Table VIII-6 below also show that the pre-school population has not risen in numbers over the past four decades. The working age population (20-64) continues to increase in numbers and as a percent of the overall population as do the population over 65.

Table VIII-6 below portrays the age and sex distribution for the Town from 1980 until 2010. For both sexes, there has been a large increase in the 35-44 age group. Interestingly, there are more women in the 25-44 age group than men. This gender balance shifts to the men in the 45-64 age group. Perhaps reflecting the slightly longer life expectancies of women, there are more women than men in the over 75 years age group.

**TABLE VIII-6  
AGE AND GENDER DISTRIBUTION**

<b>TABLE VIII-6 AGE and GENDER DISTRIBUTION</b>												
<b>AGE GROUP</b>	<b>MALE</b>				<b>FEMALE</b>				<b>TOTAL</b>			
	1980	1990	2000	2010	1980	1990	2000	2010	1980	1990	2000	2010
<b>0-4</b>	63	82		69	55	69		49	118	151	137	118
<b>5-9</b>	71	78		60	68	83		75	139	161	173	135
<b>10-14</b>	86	93		95	77	73		78	163	166	160	173
<b>15-19</b>	91	72		77	78	65		72	169	137	138	149
<b>20-24</b>	58	52		38	54	44		30	112	96	72	68
<b>25-34</b>	164	157		97	177	179		94	341	336	237	191
<b>35-44</b>	112	206		162	129	219		177	241	425	446	339
<b>45-54</b>	93	135		230	73	113		252	166	248	424	482
<b>55-64</b>	73	87		200	76	71		194	149	158	226	394
<b>65-74</b>	46	57		95	46	62		94	92	119	138	189
<b>75+</b>	21	26		59	38	33		67	59	59	90	126
<b>TOTAL</b>	878	1045		1182	871	1011	1105	1182	1749	2056	2241	2364
<b>MEDIAN AGE</b>	29	33.7	40	44.6				45.7	30	34	40	45.2



## PRE-SCHOOL AND STUDENT POPULATION

The pre-school (0-5) population in Plainfield peaked in the 1990's in numbers and has since decreased as a percentage of the total population. In 1990 through 2010 the preschoolers dropped in number as well as a percentage of the overall population. In 1980, there were 118 pre-school children 0-4 (6.8%), compared to 118 pre-school children in 2010 (5.0% of the total population). The student age population (5-19) was relatively stable in actual number (from 471 to 464) over the past two decades. Table VIII-7 below, shows Plainfield School District enrollment trends 1986 - 2000. After a peak in 1989, there has been a gradual decline in enrollment in recent years.

**TABLE VIII-7  
PLAINFIELD SCHOOL POPULATION**

Year	K-8	9 to 12 (LHS)	Total
1986	255	116	371
1987	282	115	397
1988	304	119	423
1989	316	117	433
1990	309	121	430
1991	303	125	428
1992	314	113	427
1993	300	117	417
1994	288	120	408
1995	295	111	406
1996	285	84	369
1997	270	84	354
1998	270	90	360
1999	284	91	375
2000	283	81	364
2010	250	83	333

## WORKING-AGE (LABOR FORCE) POPULATION

The working-age group (18-64) is often referred to as the labor force, although not all persons in the group are actually employed or looking for work. This group accounted for the main portion of Plainfield's population increase in the 1980's and 1990's, jumping from 1,063 people in 1980 to 1,312 in 1990(19%) and to 1405 in 2000 (7%). In 2010 this group comprised some 1623 people, an increase of 15.5% over the decade.

## ELDERLY POPULATION

The elderly (senior citizen) population is made up of people aged 65 and over. Although most people in this age group are retired, some are employed full or part-time. As is the case nationally, in Plainfield, there are marginally more (6.8% to 6.5%) women than men in this age bracket. The size of this population group in the Town rose from 151 to 315 persons between 1980 and 2010, to 13.3% of the population.. The following table compares Plainfield's elderly population (as a percentage of total population) to those of Sullivan County and the State, showing that the Town actually hosts a much lower percentage of elderly people than do other areas.

**TABLE VIII-8  
ELDERLY\* POPULATION AS A PERCENTAGE OF TOTAL**

	1970	1980	1990	2000	2010
<b>Plainfield</b>	8.6	8.6	8.7	10.2	13.3
<b>Sullivan County</b>	12.1	13.3	14.7	15.8	16.6
<b>New Hampshire</b>	10.6	11.2	11.2	12	13.5

\*Elderly includes residents 65 years and older  
SOURCE: U.S. Census; 1970, 1980, 1990, 2000,2010.

The population of the United States shows a relative increase in the over-65 age group, as the "baby-boom" generation gets older and the effect of lower fertility rates is felt. Plainfield, Sullivan County and New Hampshire also experience this population shift. If the Plainfield in-migration has a notable impact on this trend, The Town will have to consider meeting the special needs of this greater proportion of its population.

## POVERTY

1. *Poverty is called a derived measure.* The Census and ACS do not measure poverty directly, rather the surveys ask questions about income and family relationships. The answers are used to calculate poverty status. The current official poverty measure has two components—poverty thresholds (income cutoffs) and family income that is compared to these thresholds, as specified by the Office of Management and Budget. More specifically, the thresholds are arranged in a two-dimensional matrix consisting of family size (from one person to nine or more) cross-classified by presence and number of family members under 18 years old (from no children present to eight or

more children present). Unrelated individuals and two-person families are differentiated by the age of the reference person (under 65 years old and 65 and older). These thresholds are revised annually to allow for changes in the cost of living as reflected in the Consumer Price Index. The poverty thresholds are not adjusted for regional, state, or local variation in the cost of living. The original government formula, created in 1955, did not take account of rising costs of medical care and other factors. Ca 2008 the definition of poverty was not changed but the method of its determination was changed resulting in higher reported poverty rates.

**TABLE VIII-9  
POVERTY LEVEL SELECT GEOGRAPHIC AREAS**

	2000				2010			
	Households		Individuals		Households		Individuals	
	Number	%	Number	%	Number	%	Number	%
<b>Plainfield</b>	12	1.2	63	2.8	52	5.7	156	6.1
<b>Sullivan County</b>	565	5.2	3367	8.5	1,899	10.4	4,330	10.0
<b>Lebanon</b>	204	6.3	1089	8.8	500	8.6	1,177	9.1
<b>Hanover</b>	10	0.6	633	9.1	323	10.9	834	11.0
<b>Grafton County</b>	1033	5.1	6462	8.6	3,398	9.9	8,068	9.8
<b>New Hampshire</b>	13948	4.3	78530	6.6	42,657	8.3	99,527	7.8

*Data from 2000 US Census*

*Data from ACS 2006-2010*

**TABLE VIII-10**

**PLAINFIELD POVERTY DISTRIBUTION 2010 CENSUS**

	FAMILIES		INDIVIDUALS	
	Number	%	Number	%
Households below PL	52	5.7	156	6.1
Married couple households below PL	1			
Other family households below PL	41			
Male household/no wife present	24			
Female householder/no husband present	17			
Non family households	10			
Children under 18	58			
Children 5 or under	22			

**PLAINFIELD POVERTY DISTRIBUTION ACS\_SF 2006-2010  
ESTIMATES**

<b>Plainfield Population <i>Estimate</i></b>	2540			
	#	Male	Female	TOTAL
Under age 6 under PL	185	22	0	22
Age 6-11	255	2	24	26
Age 12-17	168	6	0	6
Age 18-24	81	0	0	0
Age 25-34	213	24	32	56
Age 35-44	453	0	10	10
Age 45-54	406	11	8	19
Age 55-64	526	0	8	8
Age 65-74	138	0	0	0
Age 75 and over	115	9	0	9
Total	2540	74	82	156

*NH Poverty and NH Poverty 1*

\*See Economic Chapter for definition of families below poverty line and poverty line distribution by household size

**TABLE VIII-11  
PLAINFIELD INCOME BY SOURCE**

**EARNED INCOME, SOCIAL SECURITY INCOME, PUBLIC ASSISTANCE INCOME**

	Number	% Households
Total Households	915	100
Households with earned income	835	91
Median Household Income	85966	
Mean Household Income	102222	
Median Family Income	87216	
Mean Family Income	106686	
	63583	
Households with SSI	245	26.8
Median SSI	12817	
Households with Supplementary SSI	7	0.8
Median Supplementary SSI	1386	
Households with Public Assistance Income	0	0
Median Public Assistance Income	0	

Source: ACS 2010-DPO3 PLH

**POPULATION PROJECTIONS**

Population projections are the basis for much of our future planning for the community.

In the, 1980-1990 decade Plainfield experienced a relatively large, (17.6%), increase in population, compared to Sullivan County (7.0%), and New Hampshire (20.5%) as a whole. In the 1990-2000 decade the growth in Plainfield was a more modest 9.2% compared to 9.7% in the Lebanon/Hanover/Hartford area. Sullivan County grew at only 4.8% in the the 1990-2000 decade while New Hampshire grew at 11.4%.

In the 2000-2010 decennial Plainfield's growth has dropped to 5.5%

Compared to its neighbors, Plainfield is sparsely settled, with 44.6 people per square mile. Plainfield owes much of its population gains to in-migration. The 20-64 age group is now 62.3% of the 2000 population and the over 65 population is now 13.3% of the population. The size of the 0-5 age group is currently 4.99% of the population. The 5-17 age group is 19.3% of the population, which is a decrease over previous years. Plainfield has experienced real gains in its potential labor force. The decrease in the pre-school population is worrisome.

Population projections for small communities are at best challenging. Any unexpected change in the economy, such as the addition of a large industry or the closing of a major employer, may drastically alter the reliability of a projection. Therefore, one should view population estimates as a general guide that must be updated continuously as new information becomes available, and as economic conditions change.

**TABLE VIII-12**

**1997 NH OEP PROJECTIONS**

<b>Year</b>	<b>1997 PROJECTIONS</b>	<b>Actual per CENSUS</b>
<b>1990</b>	2056	2056
<b>2000</b>	2216	2241
<b>2010</b>	2364	2363
<b>2015</b>	2454	
<b>2020</b>	2526	

Chart VIII-12 above shows. New Hampshire Office of Energy and Planning projections from 1997 based on a least squares fit of the past data. This model will generally reflect the more recent growth trends and this generally results in somewhat higher projections. The OEP model is based on a computer forecasting system (DEMOS) that also models the growth patterns of many distinct sectors of New Hampshire's population and economy, taking into account the important interrelationships that exist among them. With the advent of the American Community Survey and its projections OEP has discontinued projecting community growth. ACS projections as of 2010 have too great a probability of error associated with forecast to be used at this time. The 1997 OEP projections have been reasonably accurate and are retained for the 2010 Master Plan.