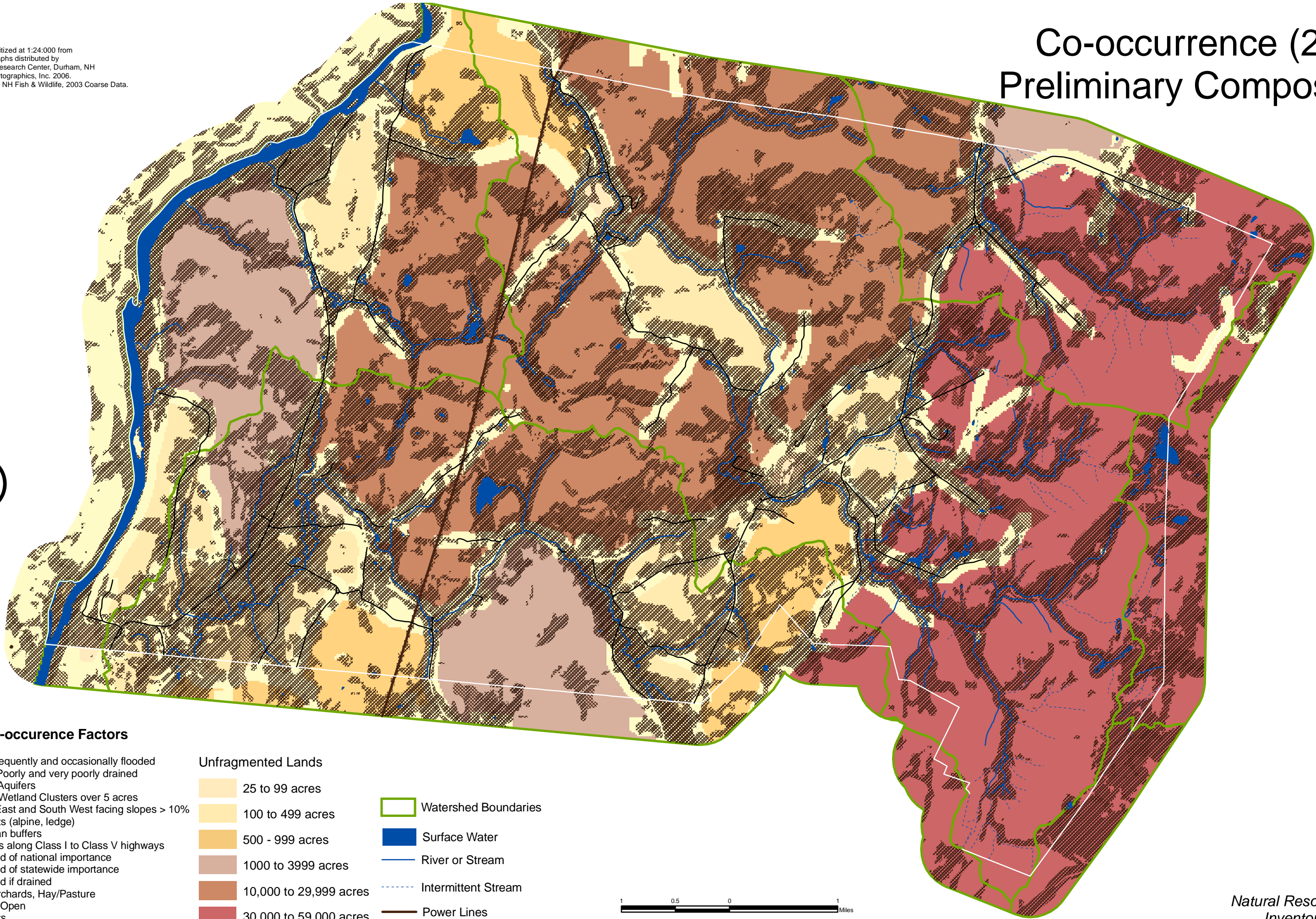


Data Sources:
 Base data layers digitized at 1:24,000 from
 USGS digital line graphs distributed by
 Complex Systems Research Center, Durham, NH
 Parcel data from Cartographics, Inc. 2006.
 Landcover data from NH Fish & Wildlife, 2003 Coarse Data.

Co-occurrence (2) Preliminary Composite



Legend

Co-occurrence Factors

- Floodplains - Frequently and occasionally flooded
- Hydric Soils - Poorly and very poorly drained
- Stratified Drift Aquifers
- Wetlands and Wetland Clusters over 5 acres
- South, South East and South West facing slopes > 10%
- Unique Habitats (alpine, ledge)
- 300 foot riparian buffers
- 300 foot buffers along Class I to Class V highways
- Prime Farmland of national importance
- Prime Farmland of statewide importance
- Prime Farmland if drained
- Row Crops, Orchards, Hay/Pasture
- Cleared/Other Open
- Gravel Deposits

Unfragmented Lands

- 25 to 99 acres
- 100 to 499 acres
- 500 - 999 acres
- 1000 to 3999 acres
- 10,000 to 29,999 acres
- 30,000 to 59,000 acres

Watershed Boundaries

- Surface Water
- River or Stream
- Intermittent Stream
- Power Lines

