

Garage is 1 ½ story -12 ft front wall stained light brown 24 X 24
 Wing is 12 X 12 vertical boarding stained white
 Main house 9 ft front wall for tall windows stained white vertical boarding

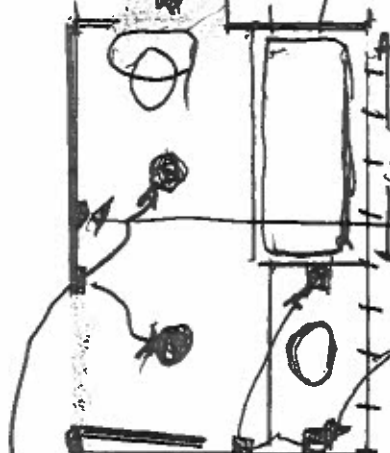
North

Garage 24 X 24 section 20 X 36 596 ft 720 ft Wing 12 X 12 144 ft House from Back 960 ft
 section 32 X 30
 Total heated 1814 X .15

24	24	12	20	30	
24	24	12	36	32	
576	576	144	720	960	1824
0.05	0.05				0.15
\$28.80	\$28.80				\$273.60
					\$28.80
					\$302.55



Window over Toilet



1 square = 1 ft

Bath Room 1

6x9

5' Tub w Shower

GFCI outlet

GFCI circuit
at 20 Amp

40" GFCI outlet 1 ft up
from counter

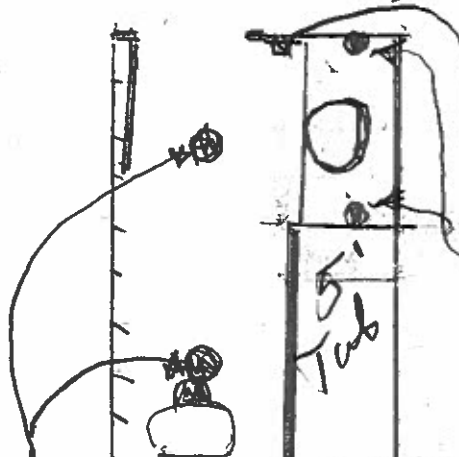
+ 1 ft from Sink edge

Switch for Scones

Switch for Overhead

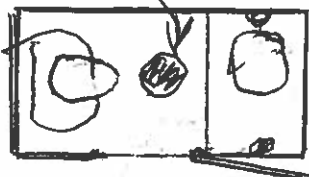
Bathroom 2

6x9'



Switches for Overhead lights
+ GFCI double outlet +
Scones

overhead lights



1/2 Bath
Scones on wall
GFCI outlets +
Switch for overhead
+ Scones

21 Baynes road rafter calculator

<https://www.awc.org/codes-standards/calculators-software/spancalc>

Species	Eastern White Pine
Size	2x6
Grade	No. 2
Member Type	Rafters (Snow Load)
Deflection Limit	L/360
Spacing (in)	24
Exterior Exposure	Wet service conditions? No
	Incised lumber? No
Snow Load (psf)	20
Dead Load (psf)	15

The Maximum Horizontal Span is:

8 ft. 5 in.

with a minimum bearing length of 0.56 in. required at each end of the member.

Property	Value
Species	Eastern White Pine
Grade	No. 2
Size	2x6
Modulus of Elasticity (E)	1100000 psi
Bending Strength (F_b)	988.57 psi
Bearing Strength (F_{cp})	350 psi
Shear Strength (F_v)	155.25 psi

While every effort has been made to insure the accuracy of the information presented, and special effort has been made to assure that the information reflects the state-of-the-art, neither the American Wood Council nor its members assume any responsibility for any particular design prepared from this Online Span Calculator. Those using this Online Span

House roof framing contemplates Intermediate bedroom wing carrier supports for roof rafters- parallel to long dimensions----about 7 ft from outside wall doubled 2 X 12" 4 ft slster piece

See drawing

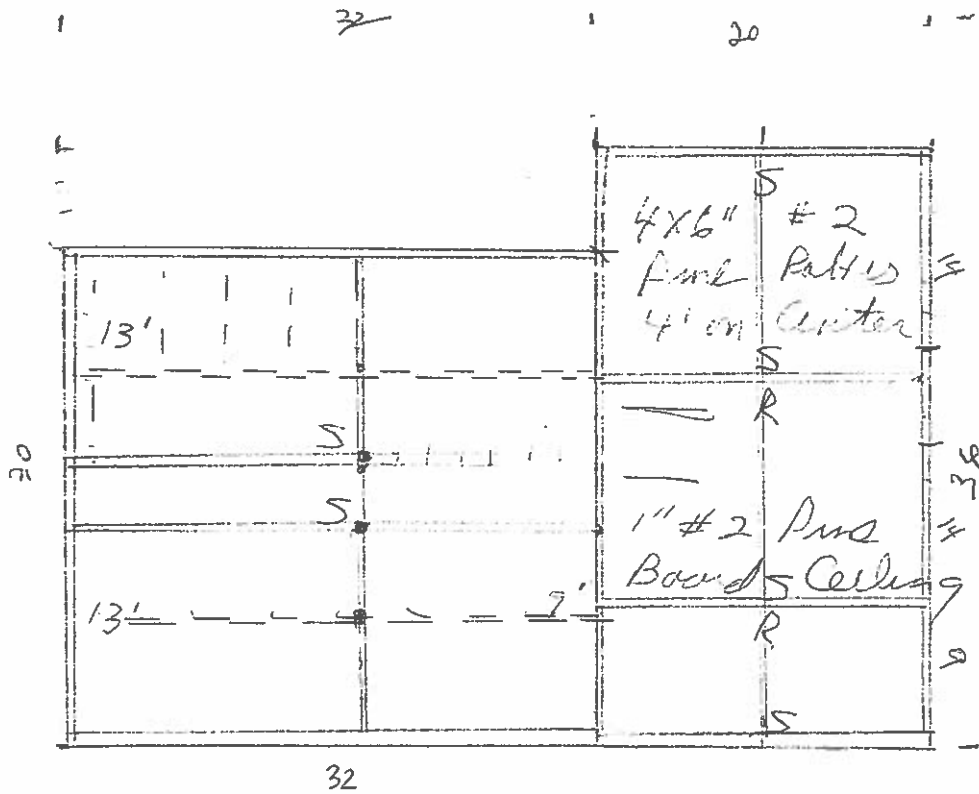
21 Baynes road drawing and comments rafter plan

Cathedral roof 8' high in front section

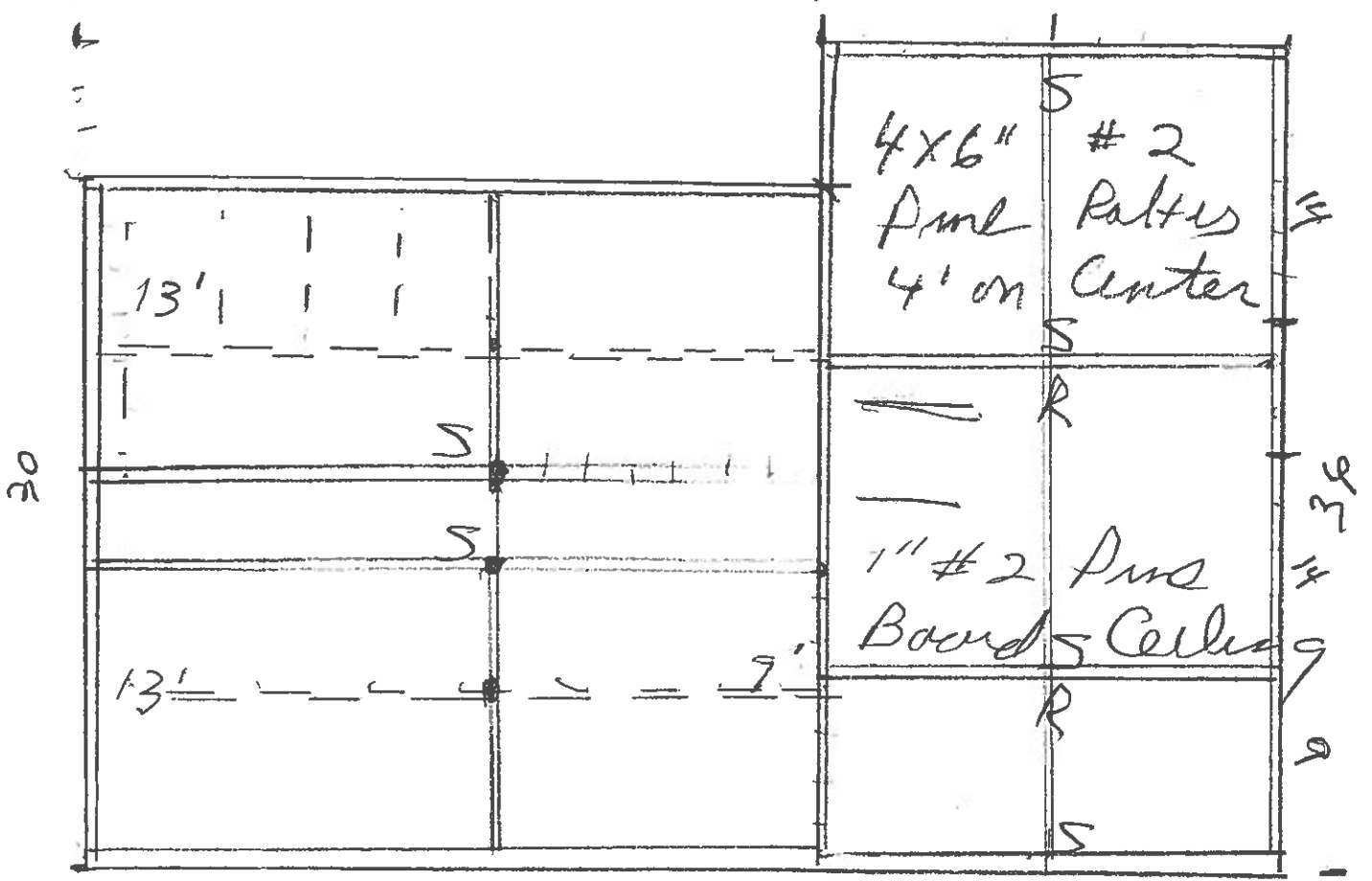
4 x 6 intermediate rafters 4 ft on center in front portion full 2 X 6 rough sawn

2 x 6 rafters 2 ft OC in back section full 2 X 6 rough sawn

4 x 6 rough sawn ceiling joists 4 ft on center in back portion only load is blown in insulation



- 8x8 #2 Pine Exterior Beams
- S = 8x8 #2 Pine Trusses Overlaid
- R = 8x8 #2 Pine Primary Beams
- 8x8 ^{oak} Ridge Pole
- Intermediate Rafter Carrels
- 6" Pine Rafters (see Table)
- 4x6 #2 Pine Ceiling Joists
- 4' on Center
- 1" Boarding over



8x8 #2 Pine Exterior Beams

S = 8x8 #2 Pine Timbers Crosties

R = 8x8 #2 Pine Primary Beams

8x8 ^{over} Carries Pole Ridge Pole

----- Intermediate Rafter Carries

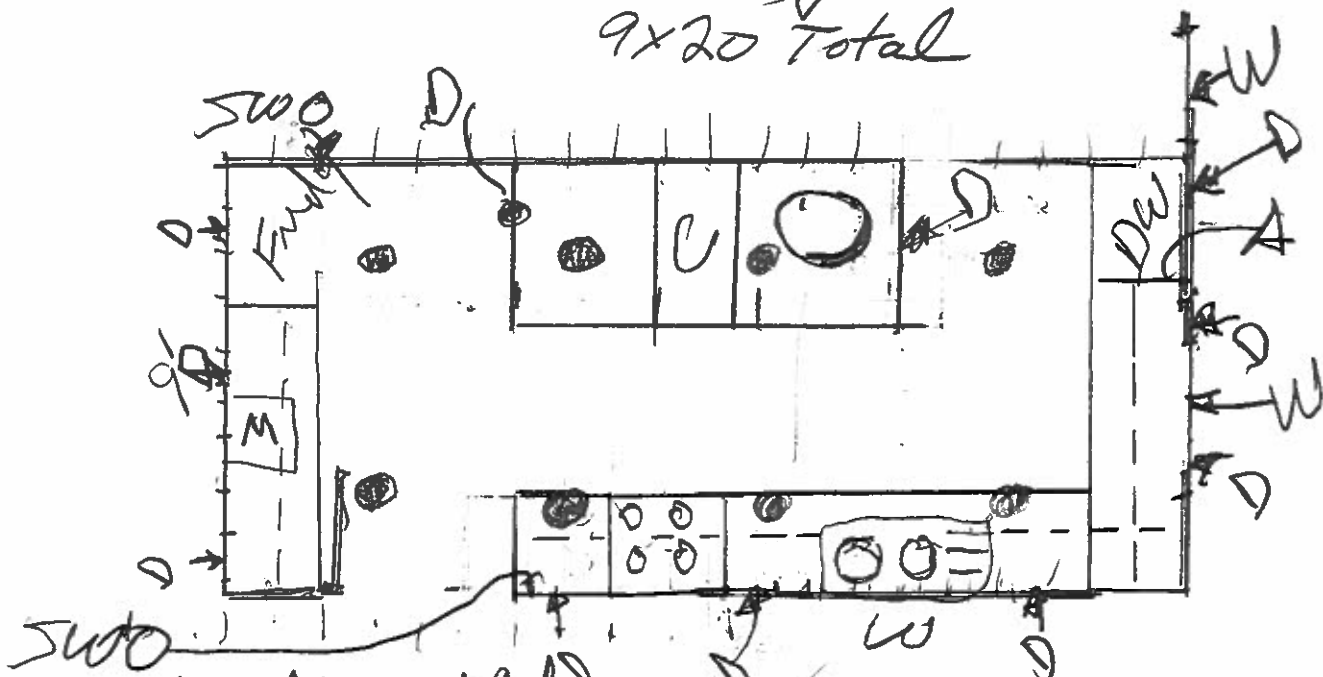
6" Pine Rafters (see Table)

4x6 #2 Pine Ceiling Joists

4' on Center

1" Boarding over

Kitchen 1 sq = 1 ft
 9x20 Total



D = double outlet - 20 amp

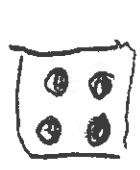
A = double outlet in Cabinet 20 amp
 Behind Dishwasher

M = Microwave

C - Compact in Island
 Outlet in Cabinet 20 Amp -

W = Window(s)

⊙ = Over head light

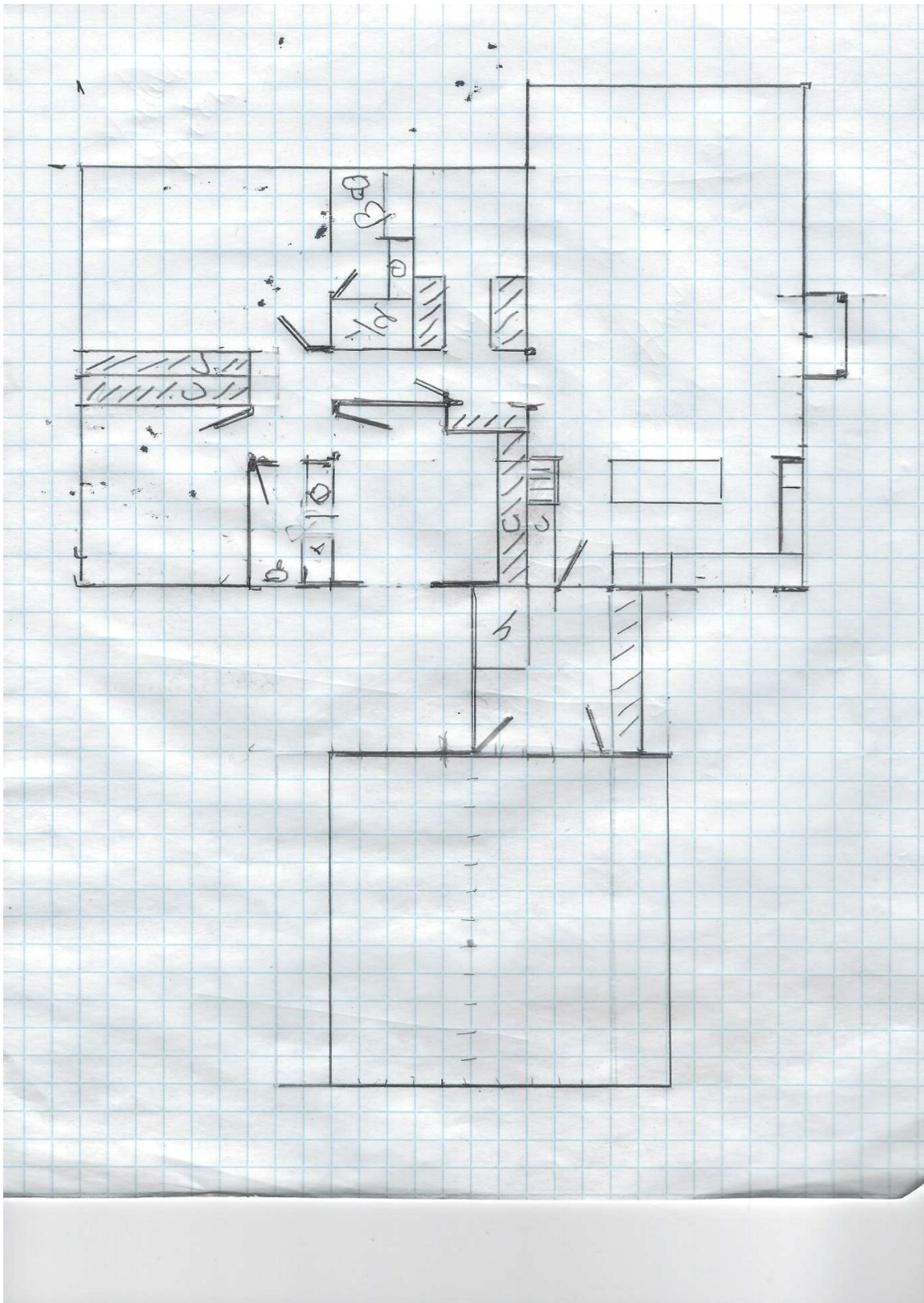


30 inch gas Range

Over head hood w light
 double outlet behind

-- indicates Cabinets over Counters

SW ⊙ Switch on wall for
 Over head lights



21 Baynes road rafter calculator

<https://www.awc.org/codes-standards/calculators-software/spancalc>

Species	Eastern White Pine
Size	2x6
Grade	No. 2
Member Type	Rafters (Snow Load)
Deflection Limit	L/360
Spacing (in)	24
Exterior Exposure	Wet service conditions?
	No
Exterior Exposure	Incised lumber?
	No
Snow Load (psf)	20
Dead Load (psf)	15

The Maximum Horizontal Span is:

8 ft. 5 in.

with a minimum bearing length of **0.56 in.** required at each end of the member.

Property	Value
Species	Eastern White Pine
Grade	No. 2
Size	2x6
Modulus of Elasticity (E)	1100000 psi
Bending Strength (F_b)	988.57 psi
Bearing Strength (F_{cp})	350 psi
Shear Strength (F_v)	155.25 psi

While every effort has been made to insure the accuracy of the information presented, and special effort has been made to assure that the information reflects the state-of-the-art, neither the American Wood Council nor its members assume any responsibility for any particular design prepared from this Online Span Calculator. Those using this Online Span

House roof framing contemplates Intermediate bedroom wing carrier supports for roof rafters-parallel to long dimensions----about 7 ft from outside wall doubled 2 X 12" 4 ft slster piece

See drawing