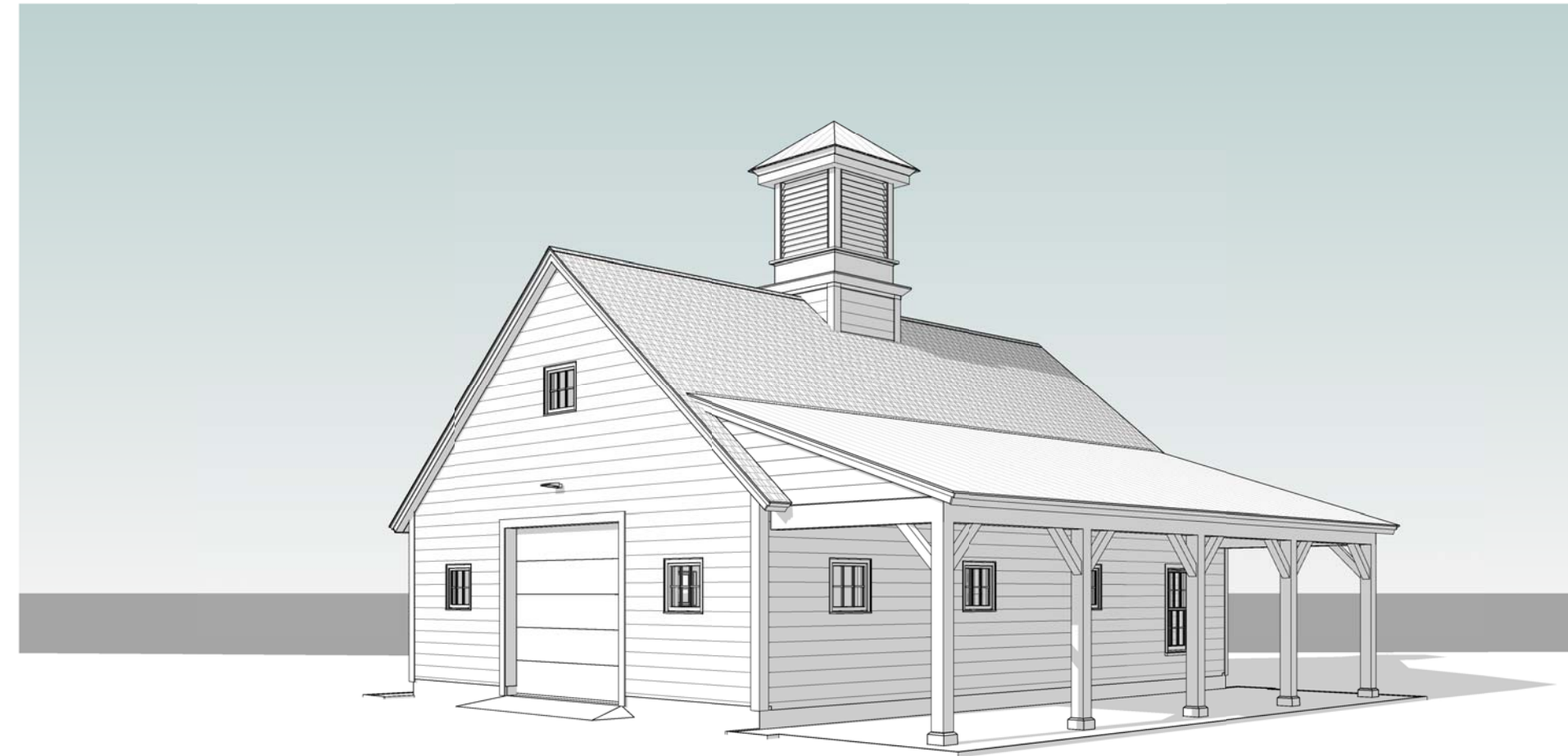
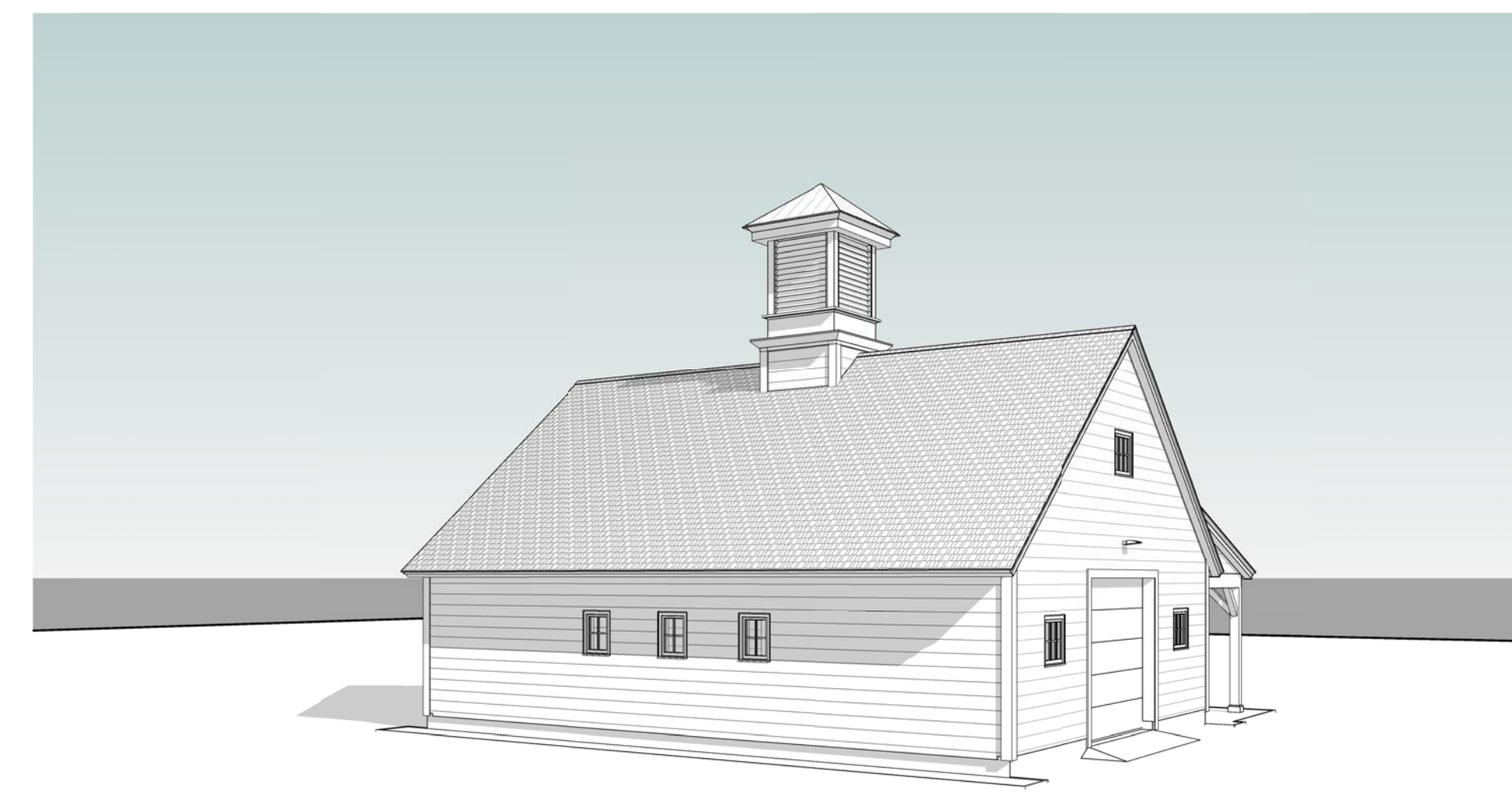


Barn Mountain Valley Treatment Center

Plainfield, New Hampshire



View from the South



View from Campus

DRAWING SYMBOLS

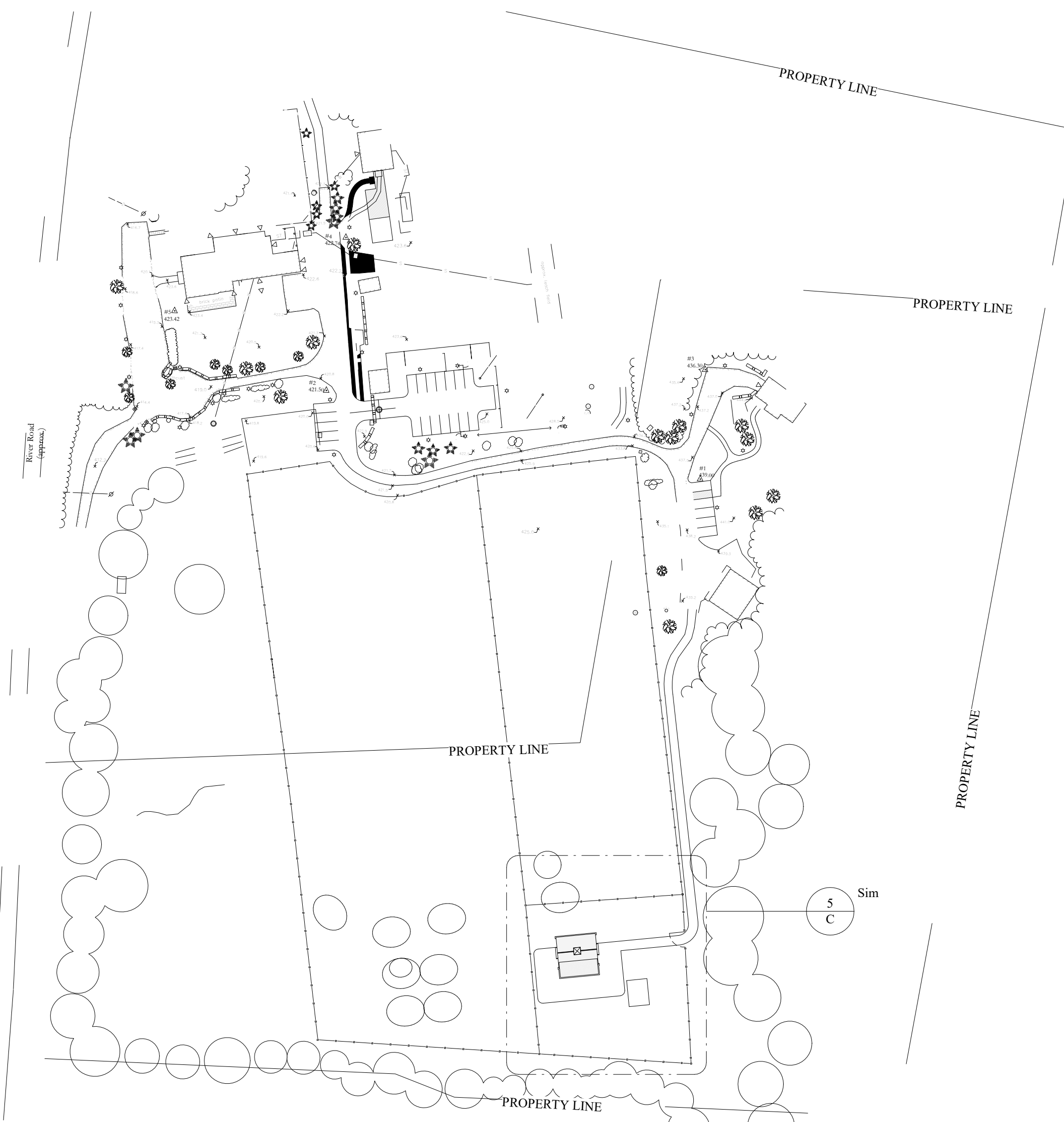
10	NEW CONTOUR	---	LINE ABOVE
4B	EXISTING CONTOUR	---	DRAWING TITLE
5	GRID LINE	---	LINE BELOW
AL	BUILDING ELEVATION	---	NORTH ARROW
3	CONSTRUCTION DETAIL	---	
7	WINDOW SYMBOL	---	
2	PARTITION TYPE	---	
9	DOOR SYMBOL	---	
4	REVISION SYMBOL	---	
10	INTERIOR ELEVATION	---	

MATERIAL SYMBOLS

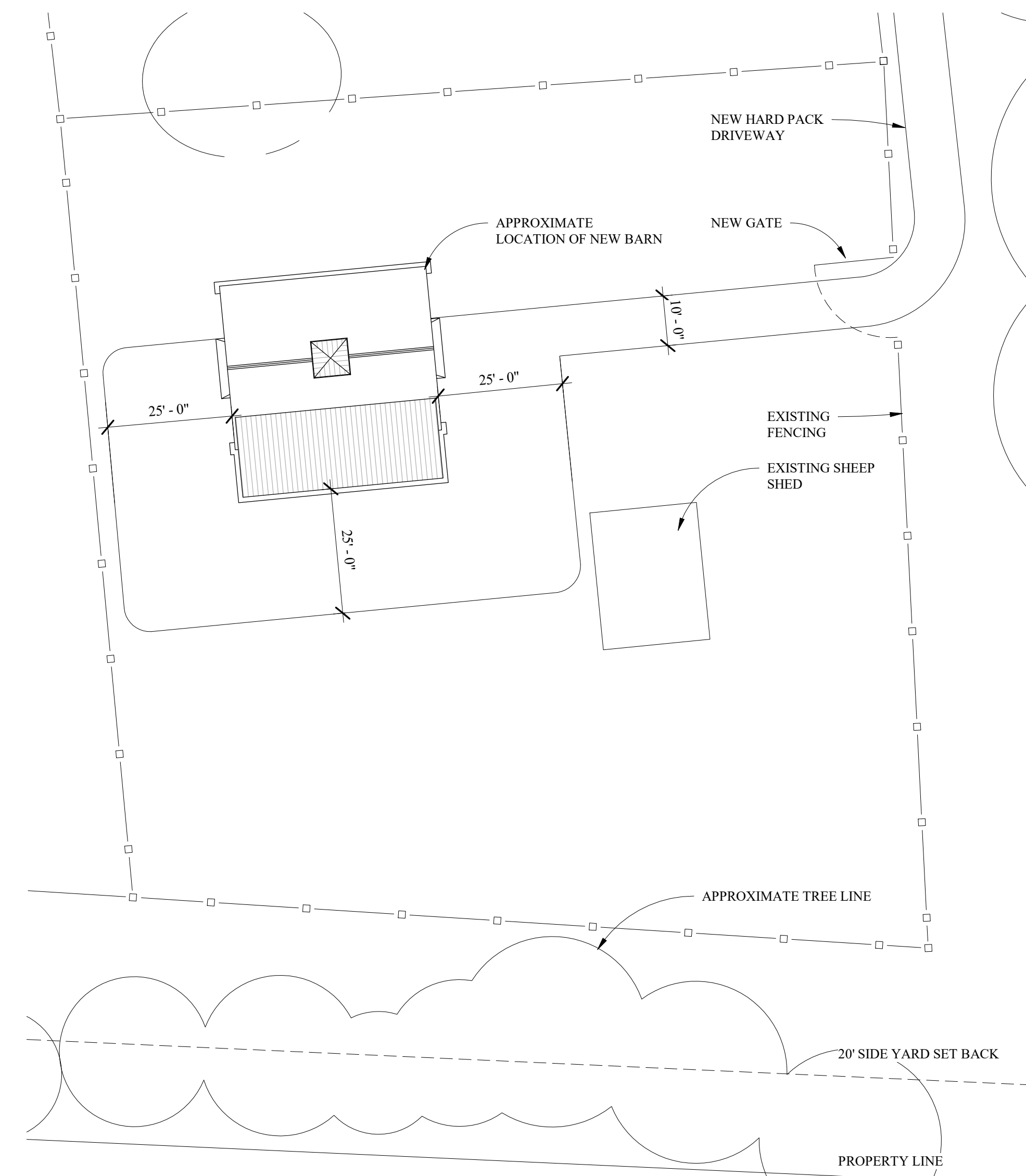
CONCRETE	RIGID INSULATION	WOOD BLOCKING
STONE	BATT INSULATION	WOOD STUD
BRICK	SPRAYFOAM INSULATION	FINISH WOOD
CONCRETE BLOCK	CELLULOSE INSULATION	PLYWOOD
STEEL	EARTH	CRUSHED STONE
ALUMINUM	GYPSPUM WALLBOARD	GRAVEL

ABBREVIATIONS

ADI -Adjustable	FB -Face Brick	NIC -Not In Contact
ACT -Acoustical Ceiling Tile	FCU -Fan Coil Unit	NON-BEG -Non-Bearing
AC -Air Conditioning	FE -Fire Extinguisher	NRC -Noise Reduction Coefficient
AFF -Above Finish Floor	FD -Floor Drain	NTS -Not To Scale
ALT -Aluminate	FD -Fire Damper	OA -Overall
ANOD -Anodized	FF -Finish Floor	OBS -Obscure
	FGL -Fiberglass	OC -On Center
	FN -Finish	OD -Outside Diameter
	FLR -Floor	OPG -Opening
	FLASH -Flashing	OPP -Opposite
	FND -Foundation	PLAM -Plastic Laminate
	FOS -Face of Foundation	PRECAST -Precast Concrete
	FOS -Face of Stud	PREFAB -Prefabricated
	FR -Fire Resistant	P.T. -Porcelain Tile
	FTG -Footing	PT -Pressure Treated
	FTR -Fin Tube Radiation	PTD -Painted
		PVC -Poly Vinyl Chloride
		QT -Quarry Tile
		R -Riser, Radius
		RCP -Reflected Ceiling Plan
		RD -Roof Drain
		REQD -Required
		RO -Rough Opening
		RUB -Rubber
		SH -Sheet
		SHTG -Shedding
		SHVS -Shelves
		SIM -Similar
		SPEC -Specification
		SQ -Square
		STC -Sound Rating
		STL -Steel
		STRL -Structural
		SUSP -Suspended
		T -Tread
		TLL -Telephone
		T&G -Tongue & Groove
		TJI -Truss Joint
		TOP -Top of Plate
		TOS -Top of Steel
		TOW -Top of Wall
		TYP -Typical
		UL -Underwriter's Lab
		VCT -Vinyl Composition Tile
		VERT -Vertical
		VIF -Verify In Field
		W -Width
		WC -Water Closet
		WD -Wood
		WIN -Window
		WO -Window Opening
		WO -Without
		W -With
		WWF -Welded Wire Fabric



4 Site
1" = 100'-0"



5 Site Barn
1" = 20'-0"

SITE PLAN NOTES:

- THIS SITE PLAN HAS BEEN DERIVED FROM A SURVEY DONE BY CARDIGAN MOUNTAIN LAND SURVEYS, LLC ON 6 SEPTEMBER 2017.
- NO WETLANDS WERE OBSERVED WITHIN THE MAPPED AREA BY CARDIGAN MOUNTAIN LAND SURVEYS, (NOT A CERTIFIED WETLAND DELINEATOR).
- NEW LIGHT FIXTURES:
WM1: RAB- #WPLED26N HIGH OUTPUT, 26W, 3000K

SURVEY NOTES

- Horizontal and vertical datums are approximate only, established from detail on rectified aerial photographs and USGS maps.
- This plat represents site conditions as of 28 August 2017 (except as may be otherwise noted by subsequent revisions). Diligent effort has been made to map observable utility structures and pertinent site features within the areas that were mapped; however additional structures or site features that this office is unaware of may exist, and no guarantee is expressed or implied against additional features that may impact site design, construction and/or alteration, or against any site alterations made subsequent to the publication of this plat unless so noted within applicable revision date. ROUTES OF BURIED UTILITIES ARE NOT KNOWN. It is the responsibility of the user to confirm the suitability of the information on this plan for any given use.
- Property Boundaries, road right-of-way and land use regulations have not been researched or surveyed. Property boundaries are shown only from a graphic tracing of existing surveys of record.

1 Site Notes
1 1/2" = 1'-0"

LIST OF DRAWINGS

C	Cover, Overall Site Plan and Focused Site Plan
A1	Plans, Door, Window and Wall Types, Door Schedule
A2	Elevations, Cupola Details
A3	Sections

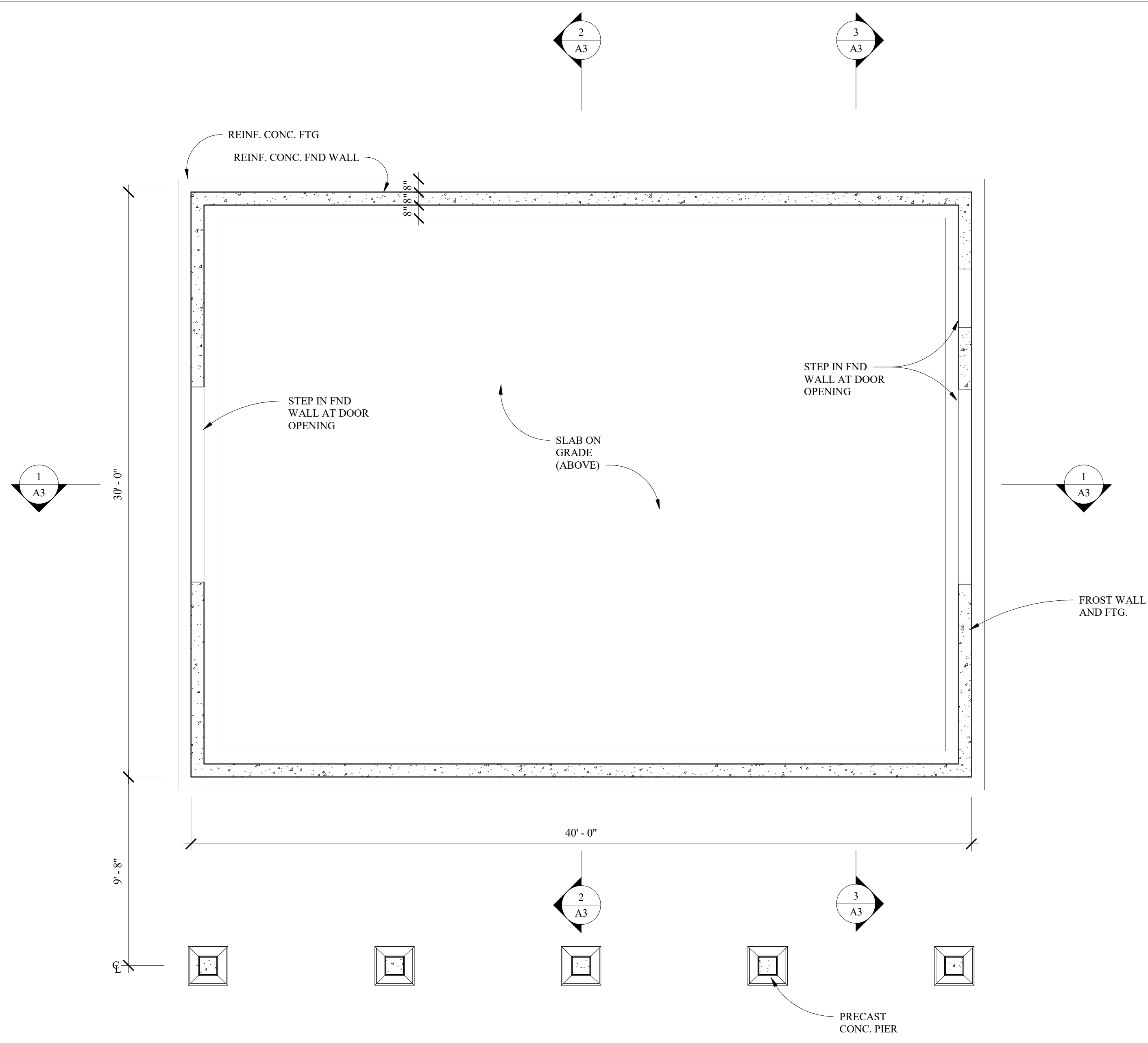
Mountain Valley Treatment Center
Barn

Plainfield, New Hampshire
Randall T Mudge & Associates

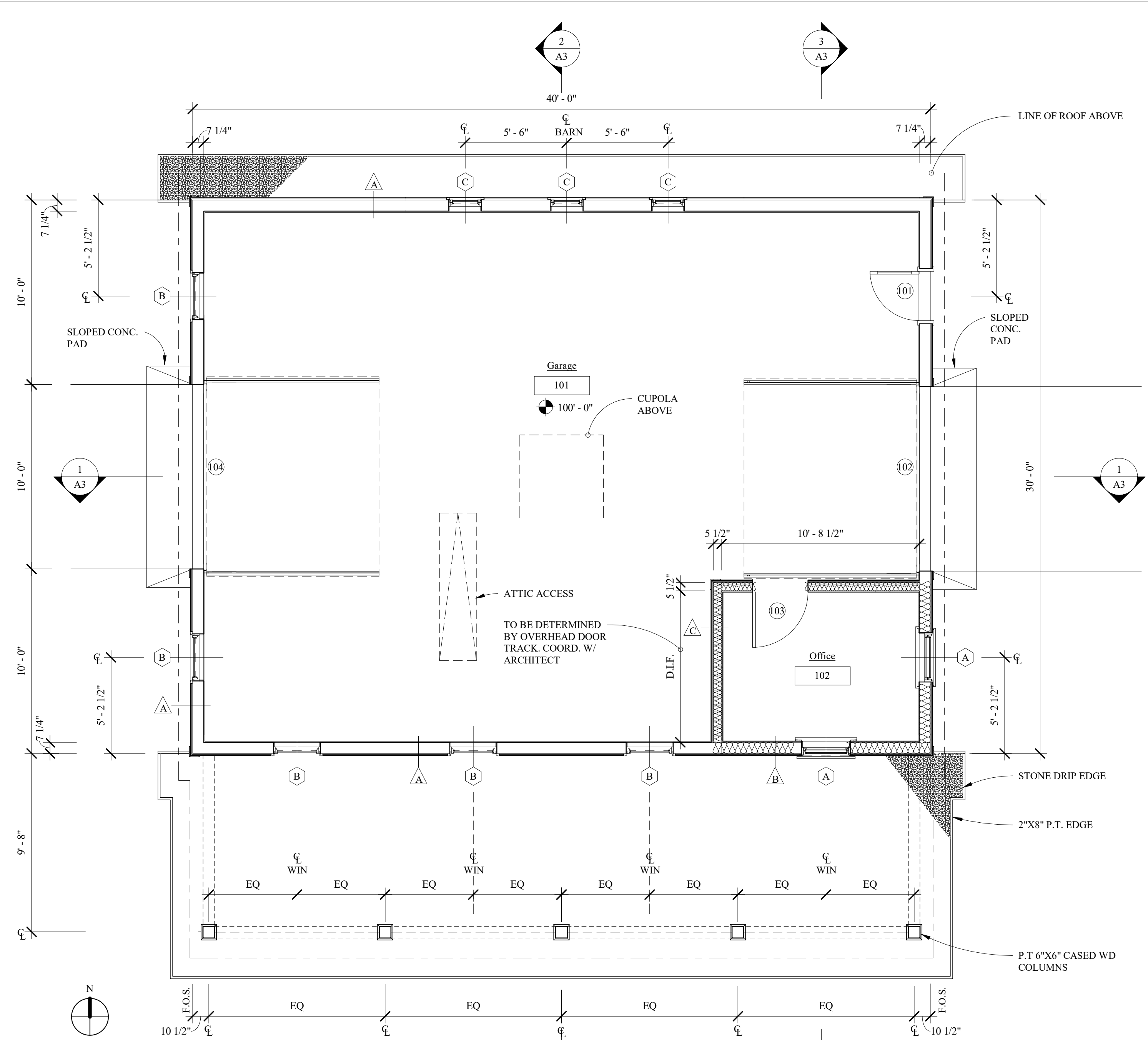
Architects
85 DCH
Route 10
Lyme, New Hampshire

Cover, Overall Site Plan and Focused Site Plan

2112	As indicated
Job No	Scale
25 AUG 21	
Date	Revised

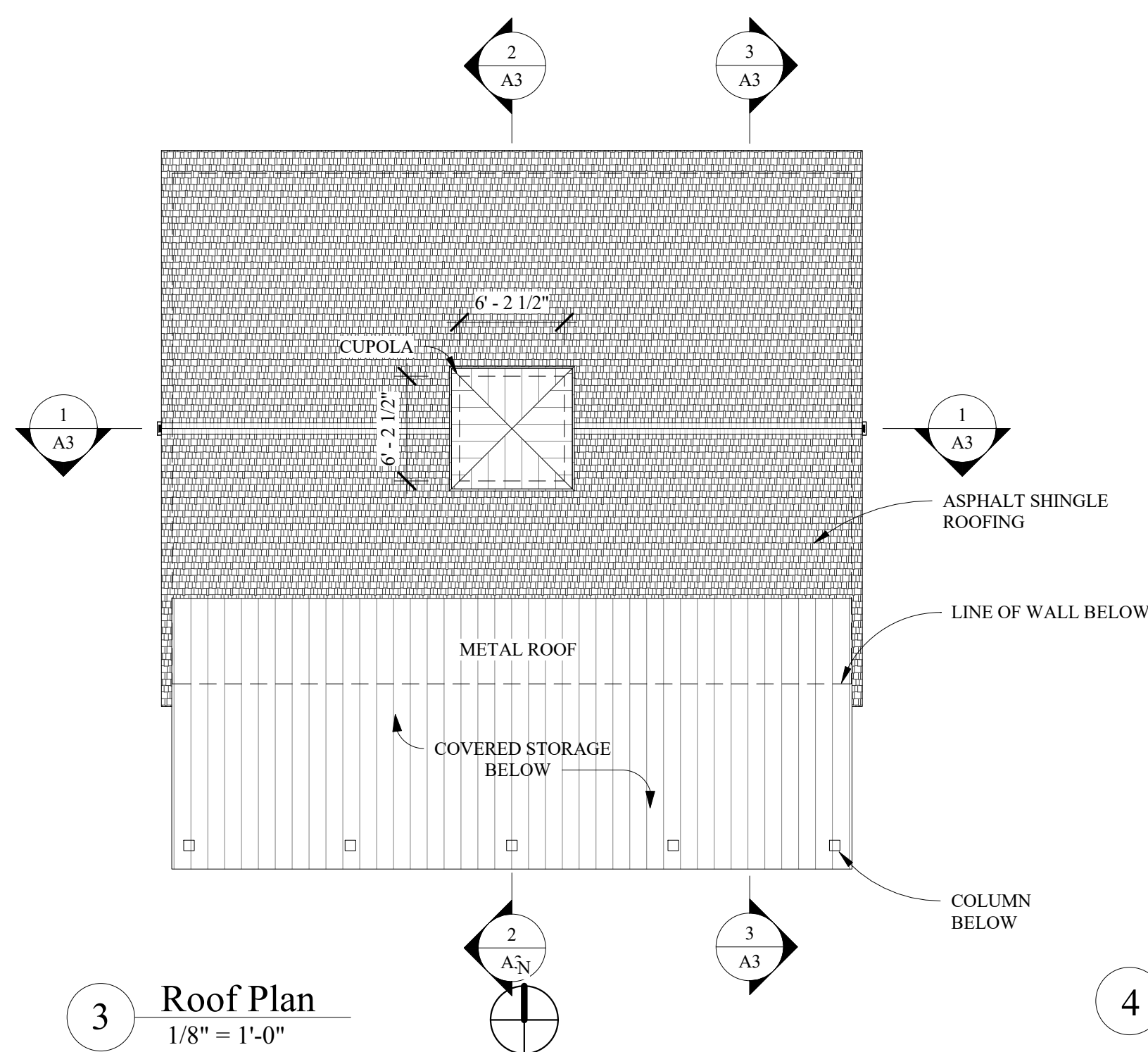


1 Foundation Plan
1/4" = 1'-0"



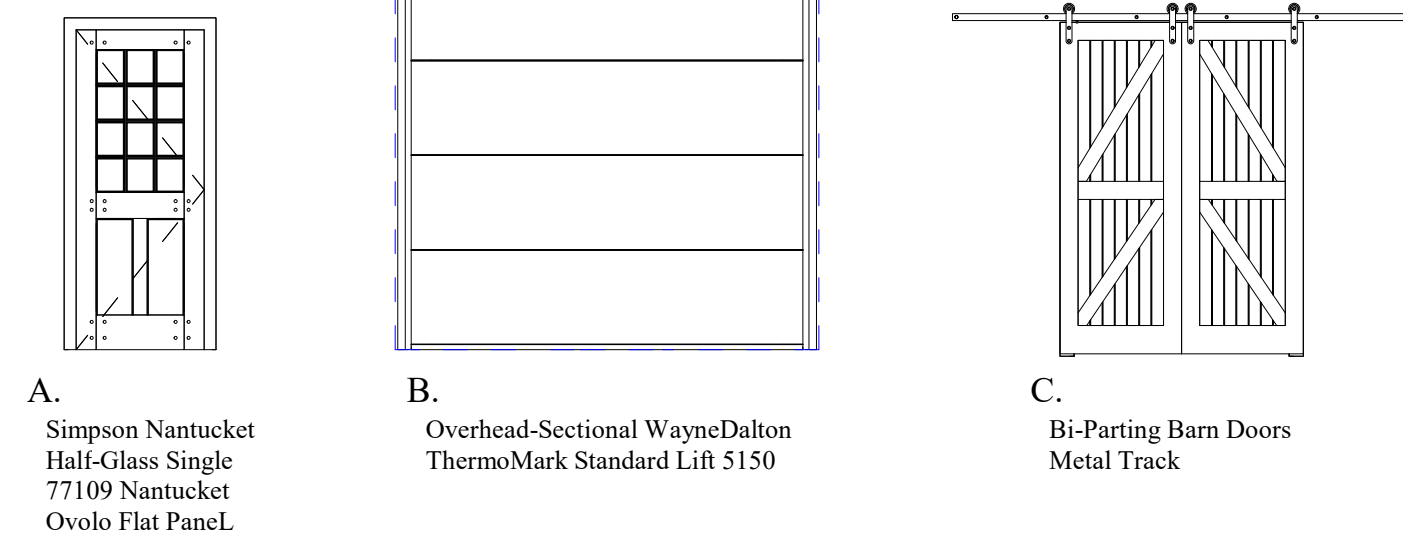
2 Floor Plan
1/4" = 1'-0"

Number	Type	Door Size			Material			Frame			Remarks
		Width	Height	Thickness	Material	Finish	Threshold	Jamb	Finish		
101	A	2'-8"	6'-8"	0' - 1 3/4"	Wood	Paint	Aluminum	Wood	Paint		
102	B	10'-0"	9'-0"	0' - 2"	Fiberglass	Manuf.	---	Wood	Paint	With electric opener	
103	A	3'-0"	6'-8"	0' - 2"	Wood	Paint	---	Wood	Paint		
104	B	10'-0"	9'-0"	0' - 2"	Fiberglass	Manuf.	---	Wood	Paint	With electric opener	
105	C	(2) 2'-6"	6'-8"	0' - 2"	Wood	Paint	---	Wood	Paint	Bi-Parting Doors and Track	

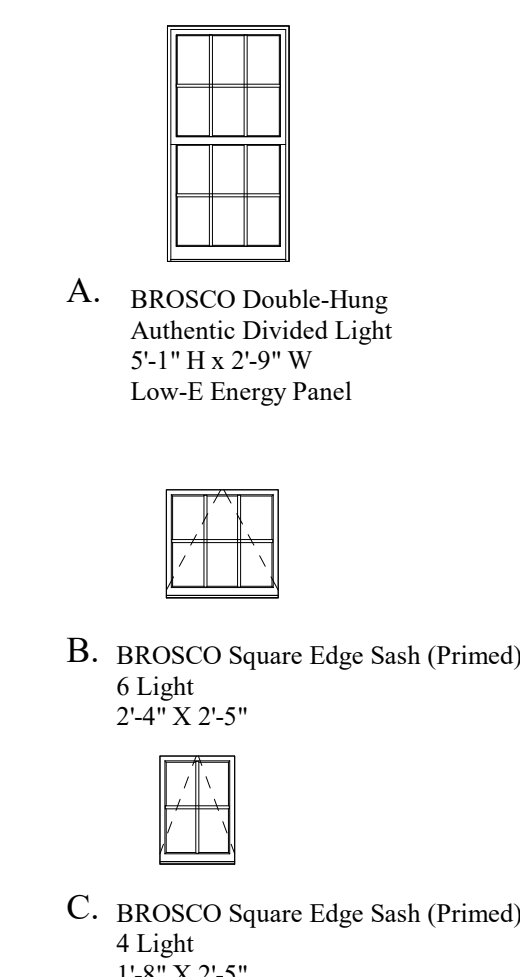


3 Roof Plan
1/8" = 1'-0"

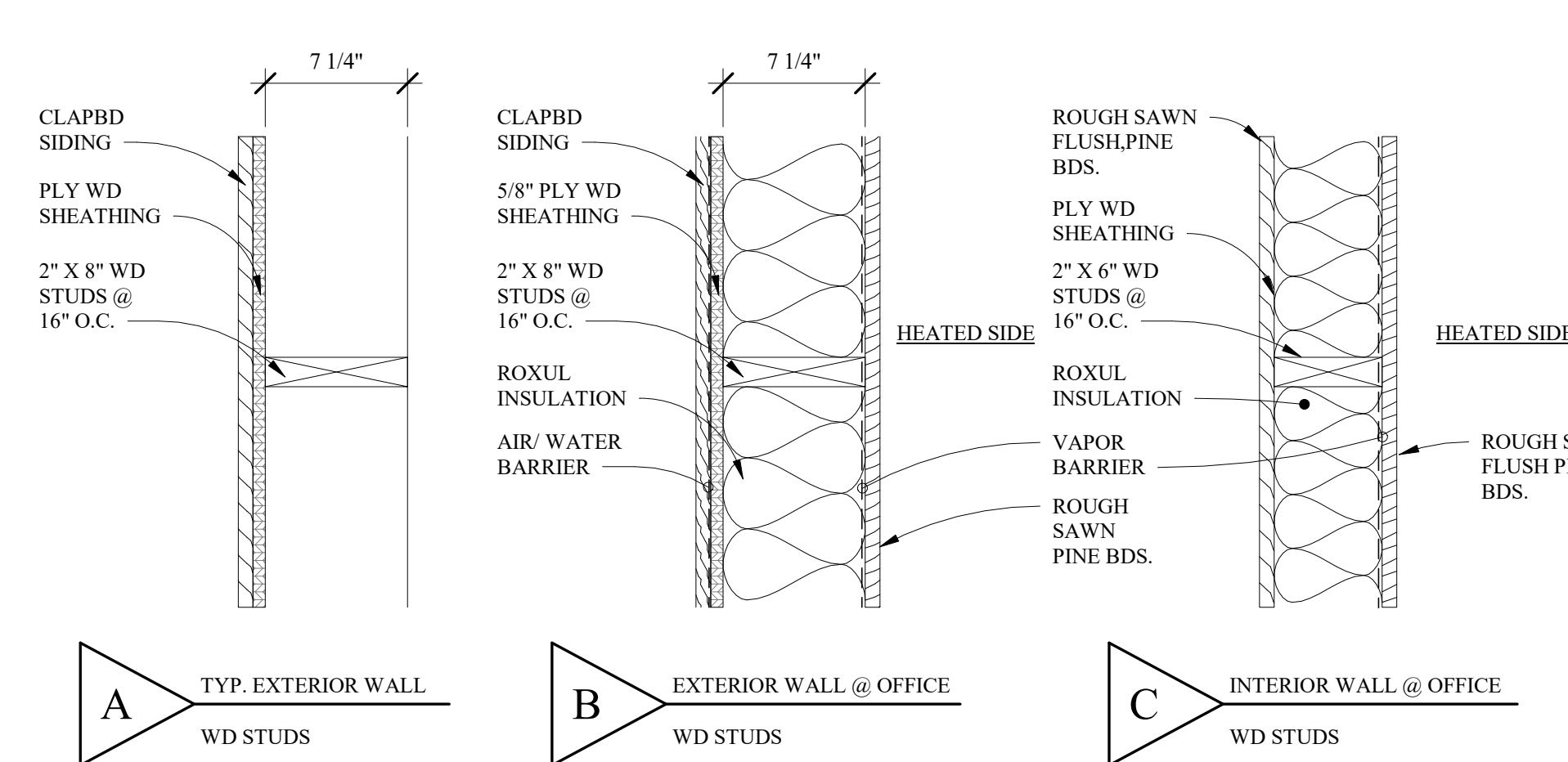
4 Door Types
N.T.S.



5 Window Types
1/4" = 1'-0"



6 Wall Types
1 1/2" = 1'-0"



Mountain Valley Treatment Center
Barn

Plainfield, New Hampshire

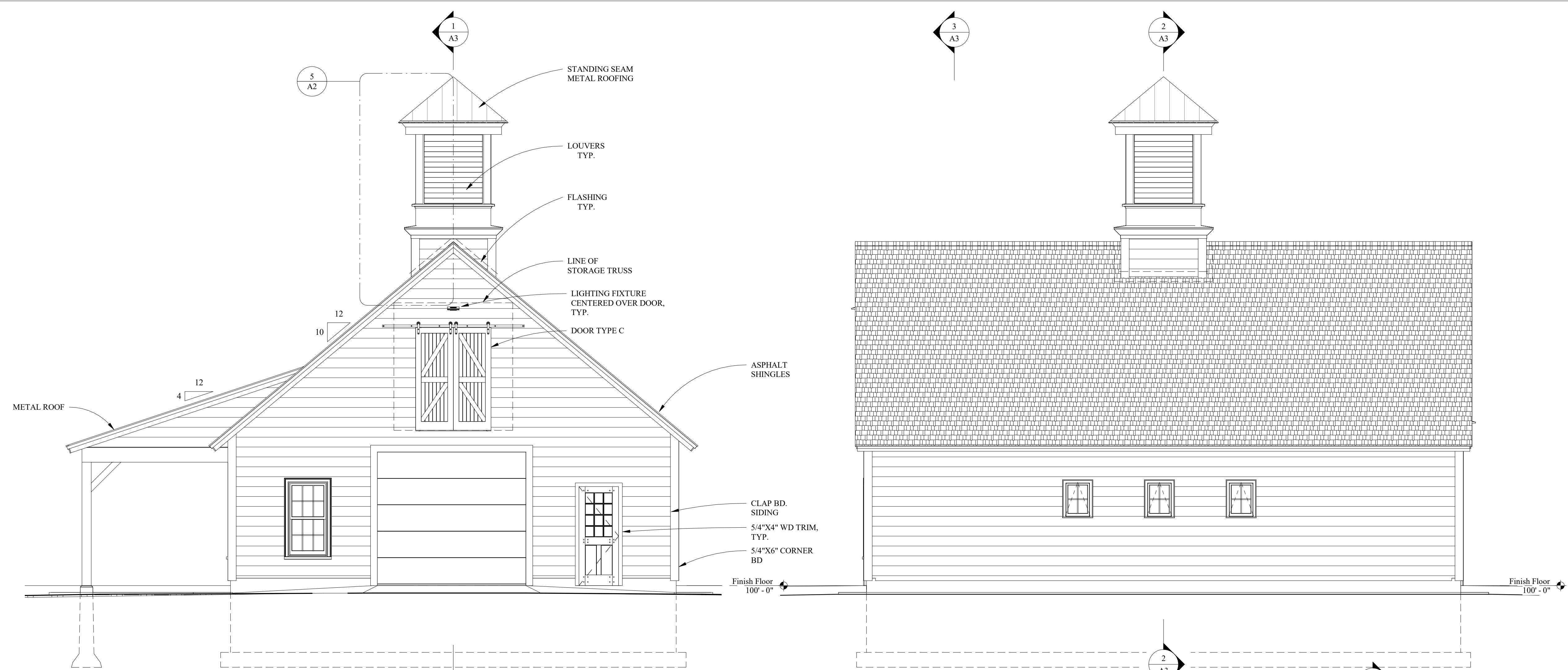
Randall T Mudge & Associates

Architects
85 DCH
Route 10
Lyme, New Hampshire

Plans, Door, Window and Wall Types, Door Schedule

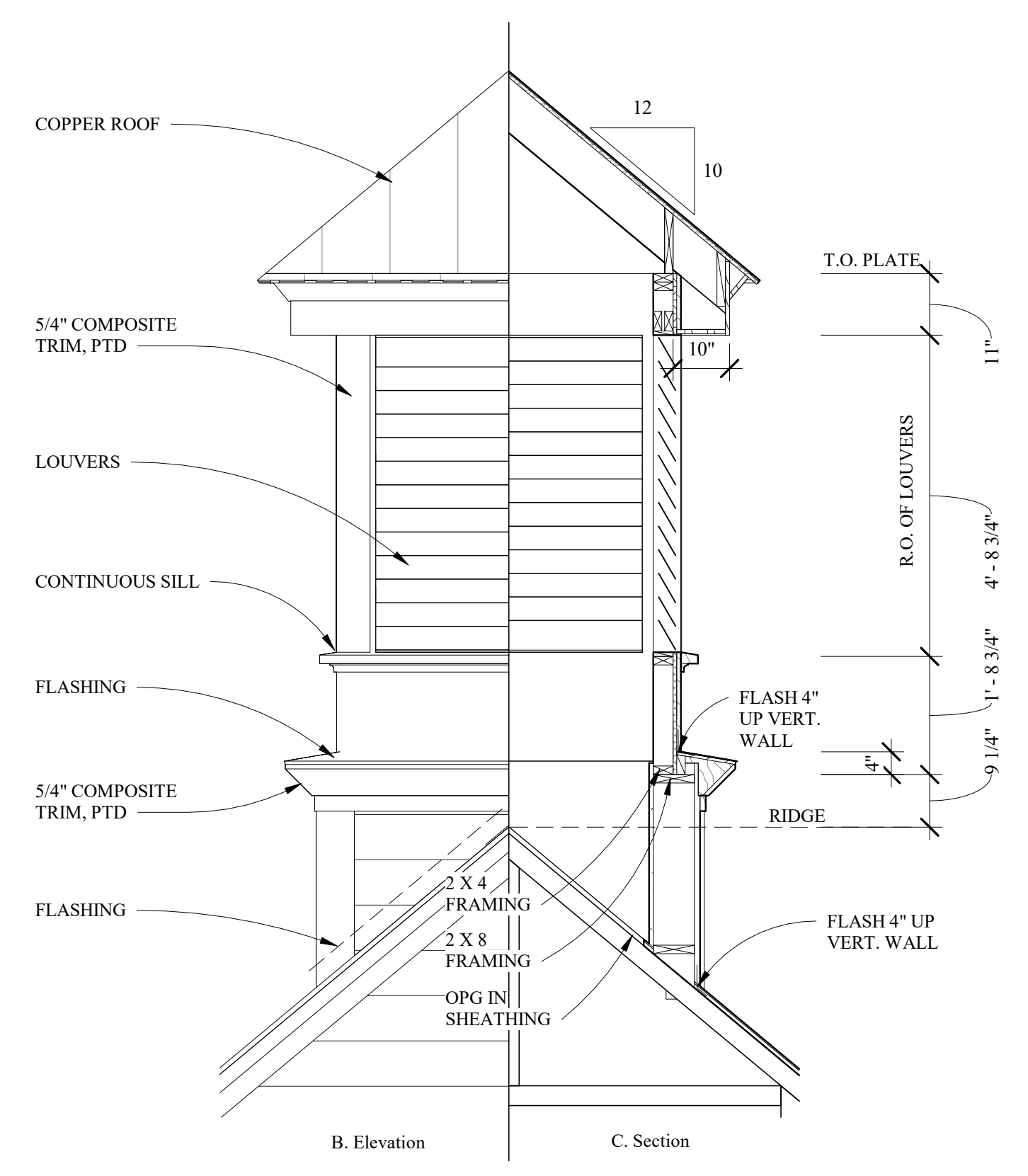
2112 Job No
25 AUG 21 Date
As indicated Scale
Revised

A1

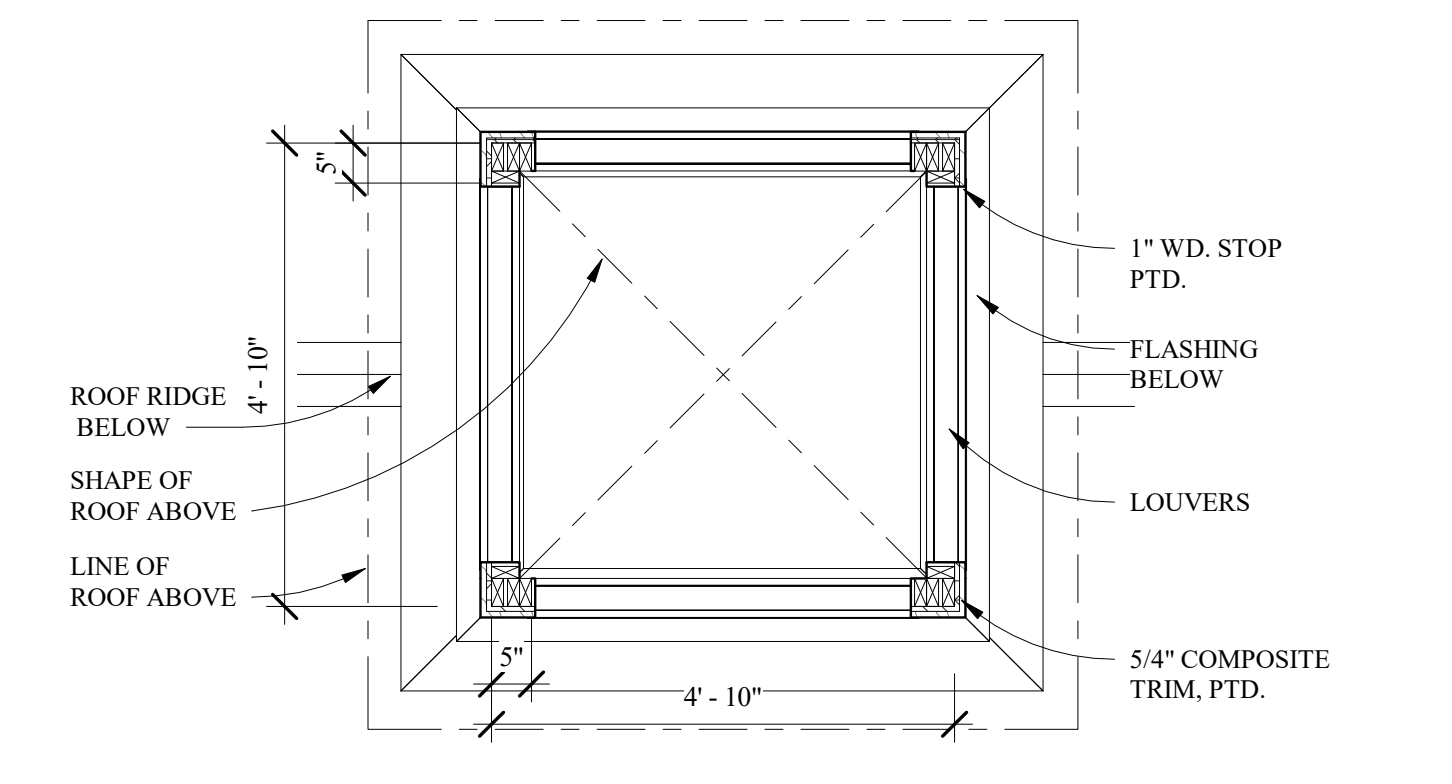


1 East
1/4" = 1'-0"

2 North
1/4" = 1'-0"

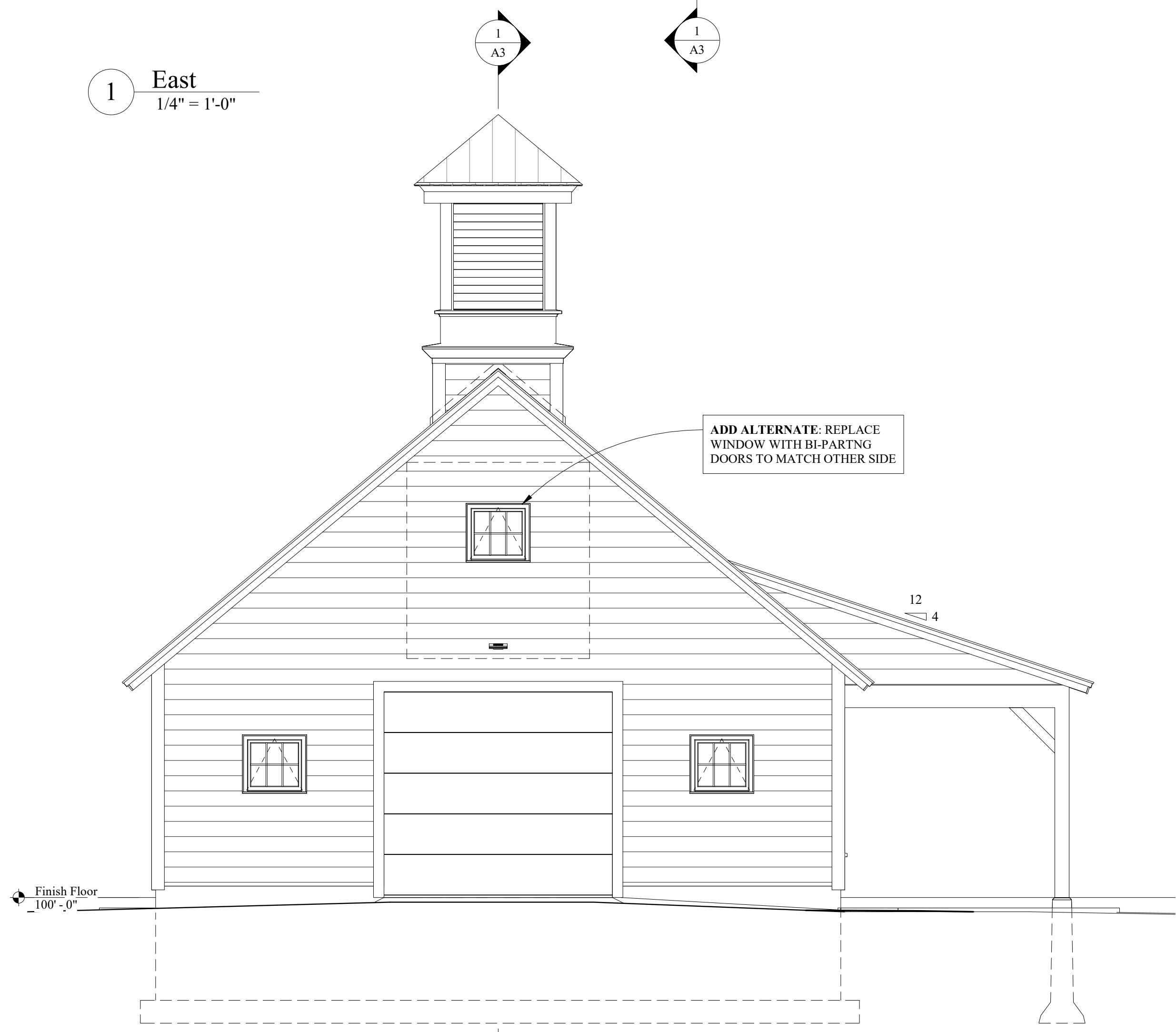


B. Elevation C. Section

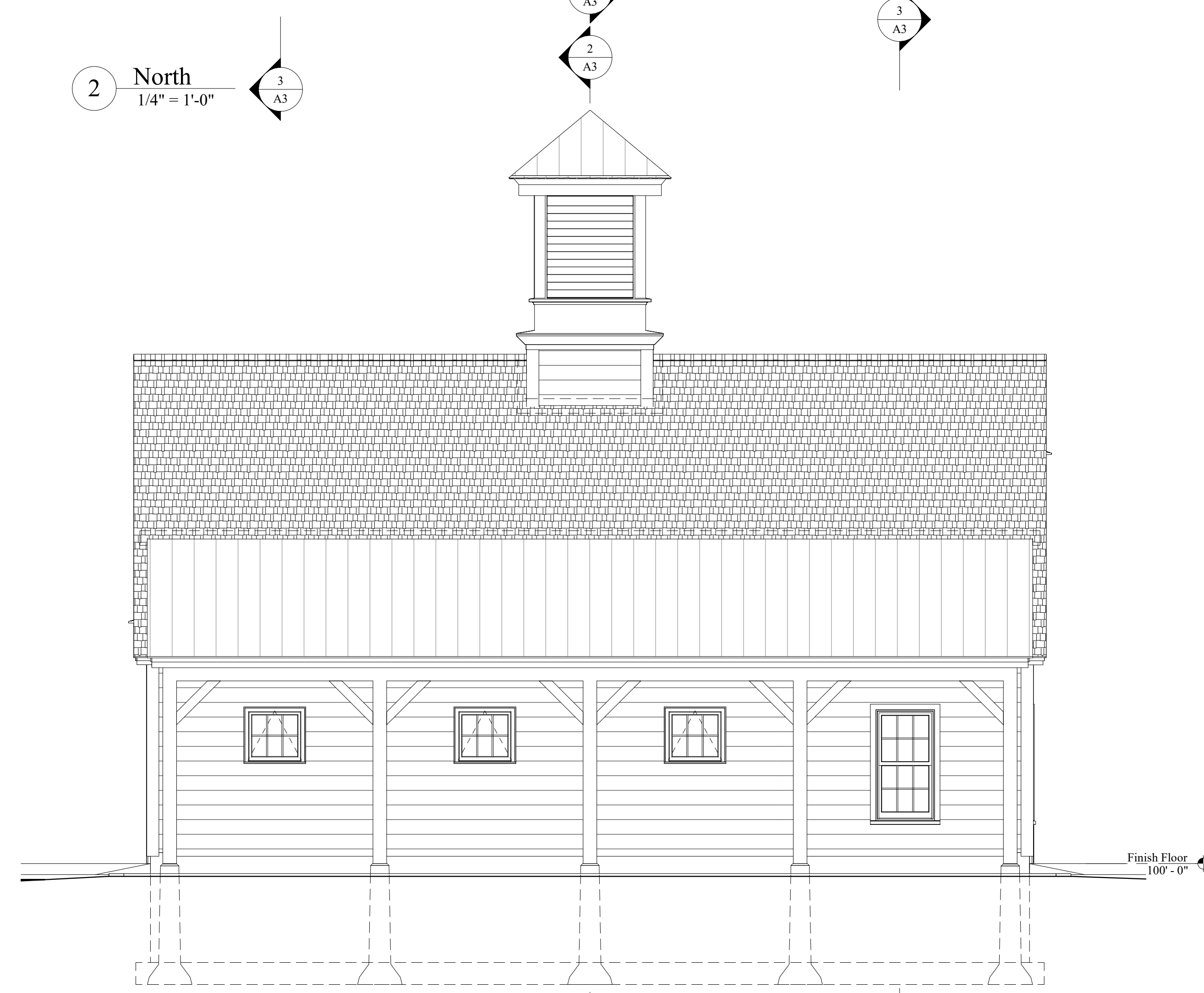


A. Plan

5 Cupola Details
1/2" = 1'-0"



3 West
1/4" = 1'-0"



4 South
1/4" = 1'-0"

Mountain Valley Treatment Center
Barn

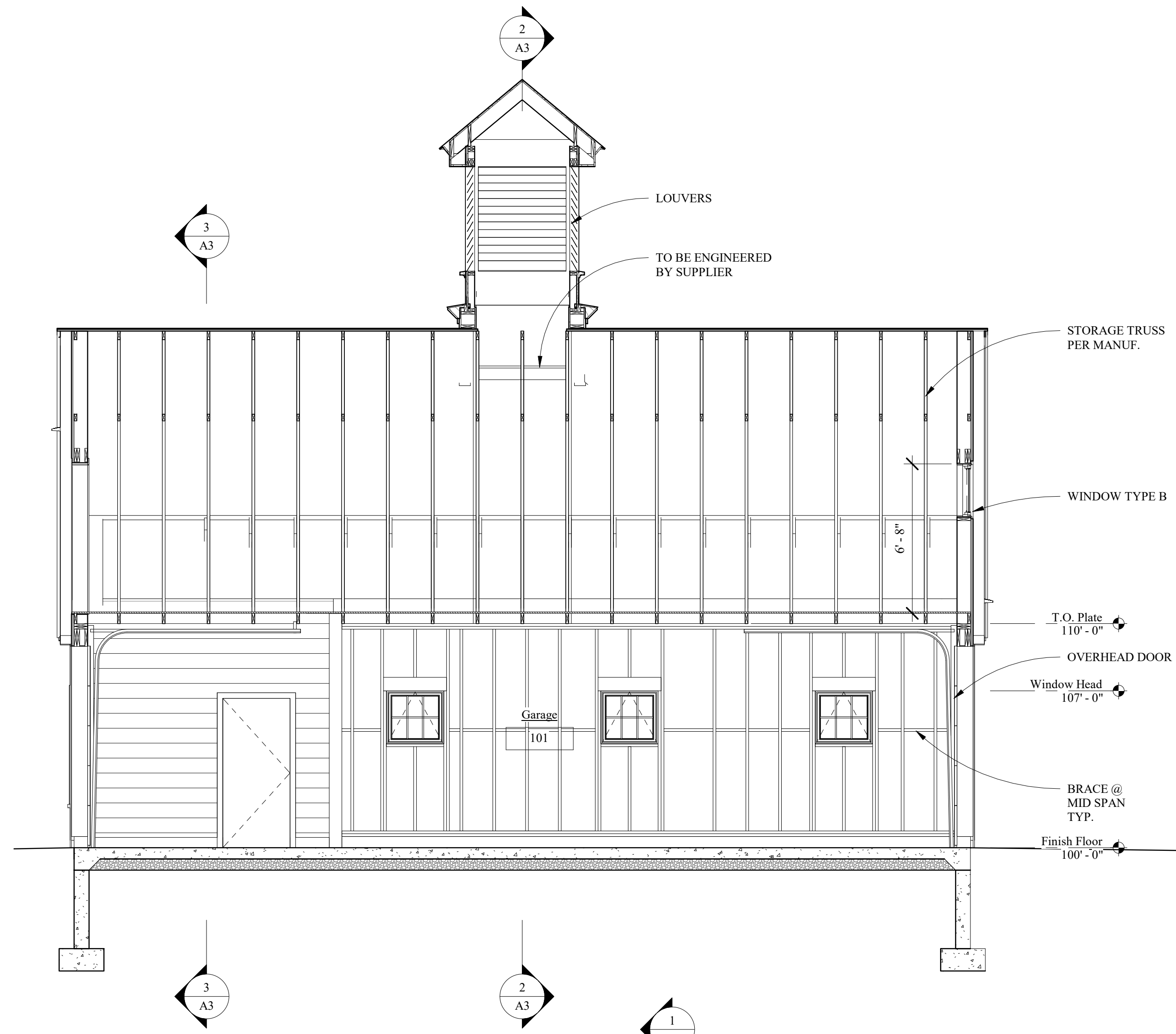
Plainfield, New Hampshire
Randall T Mudge & Associates

Architects
85 DCH
Route 10
Lyme, New Hampshire

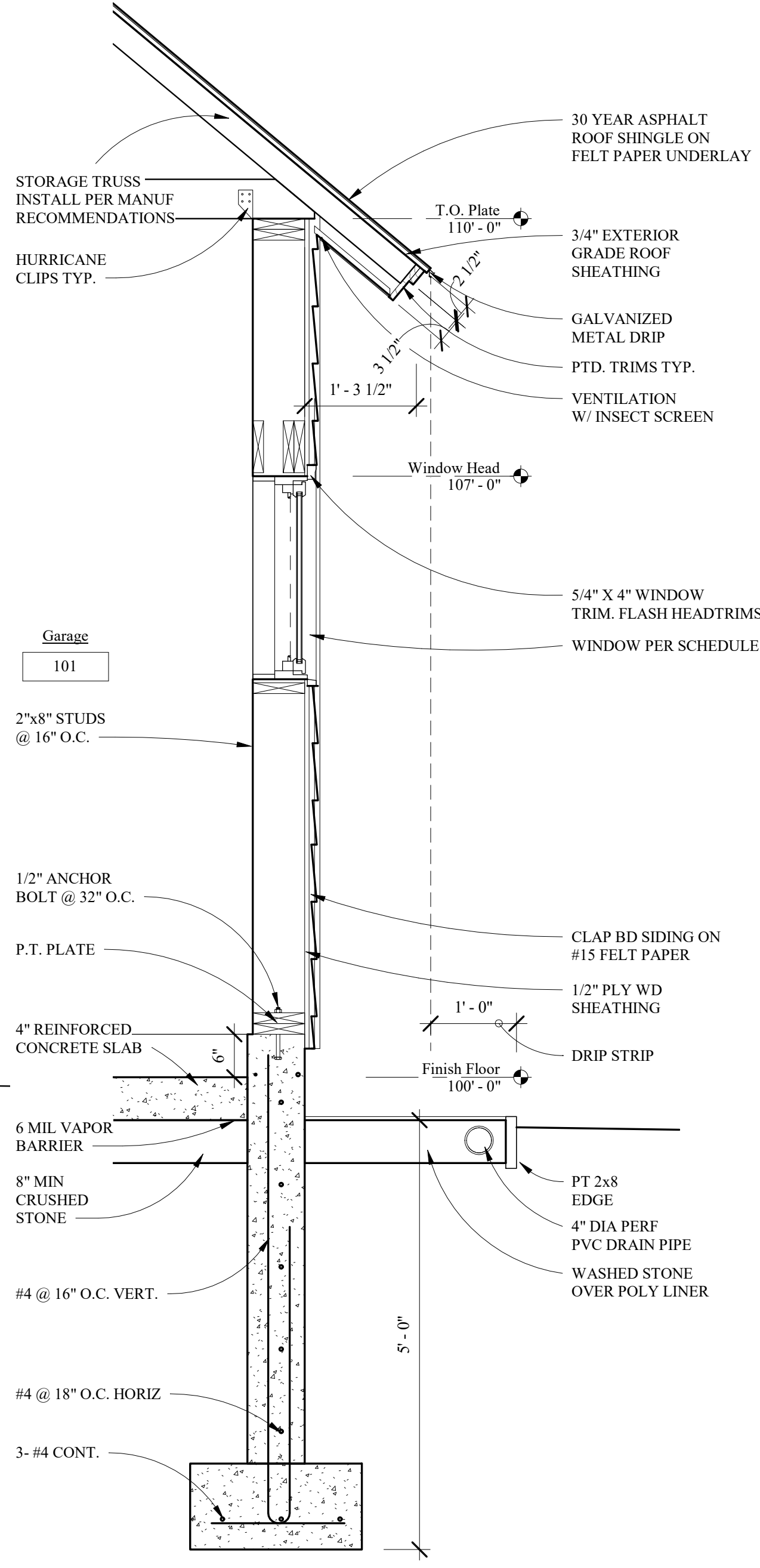
Elevations, Cupola Details

2112 Job No
25 AUG 21 Date
As indicated Scale
Revised

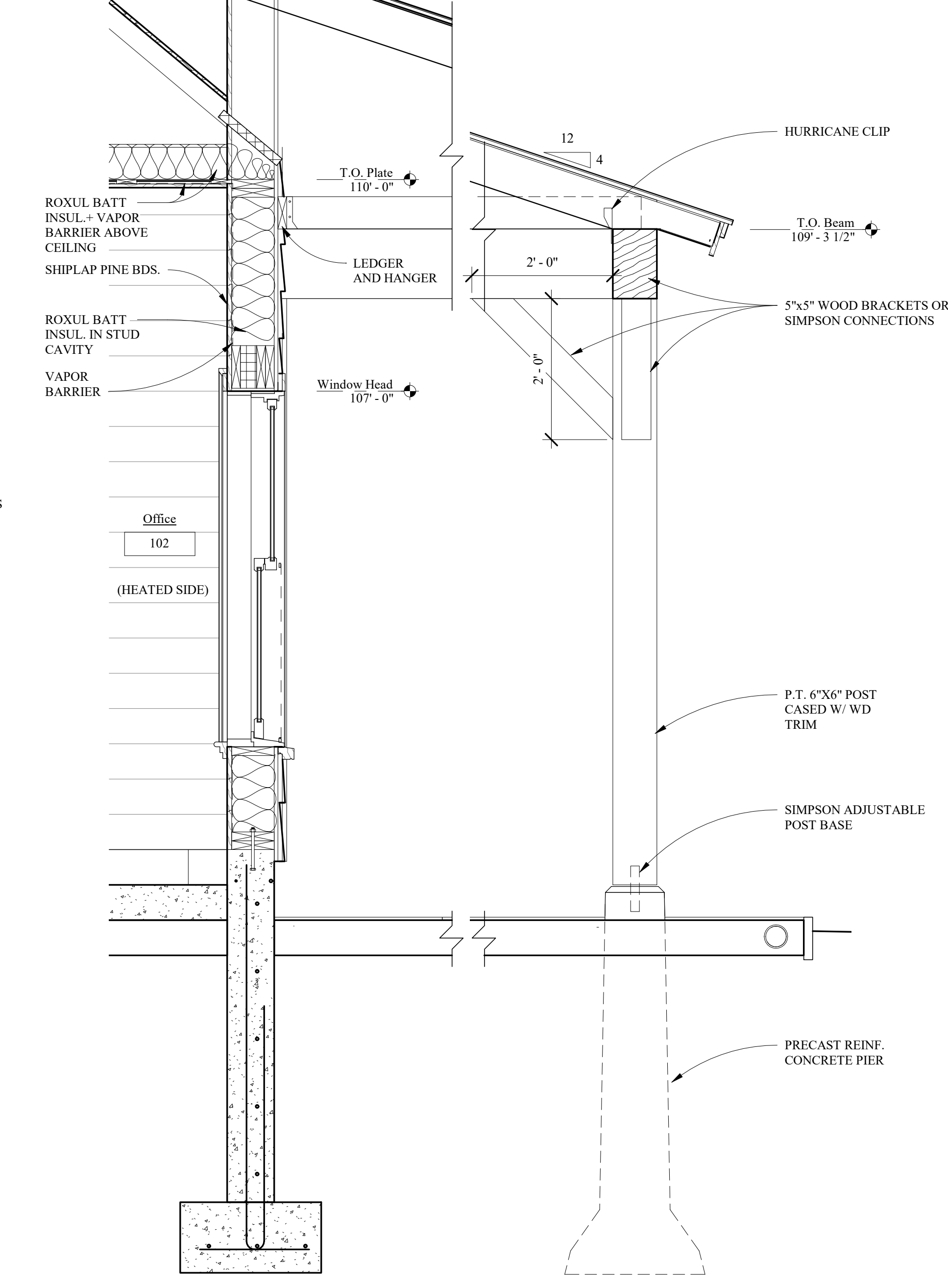
A2



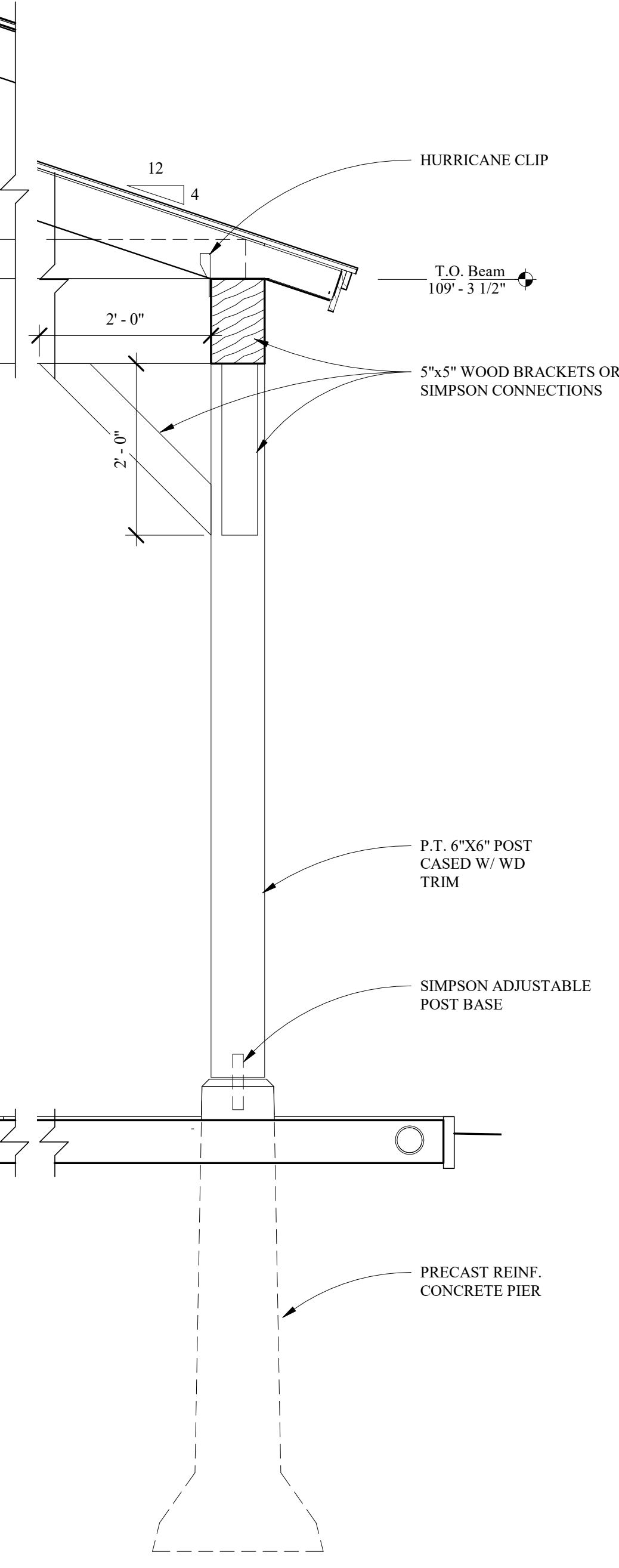
1 Ridge Section
1/4" = 1'-0"



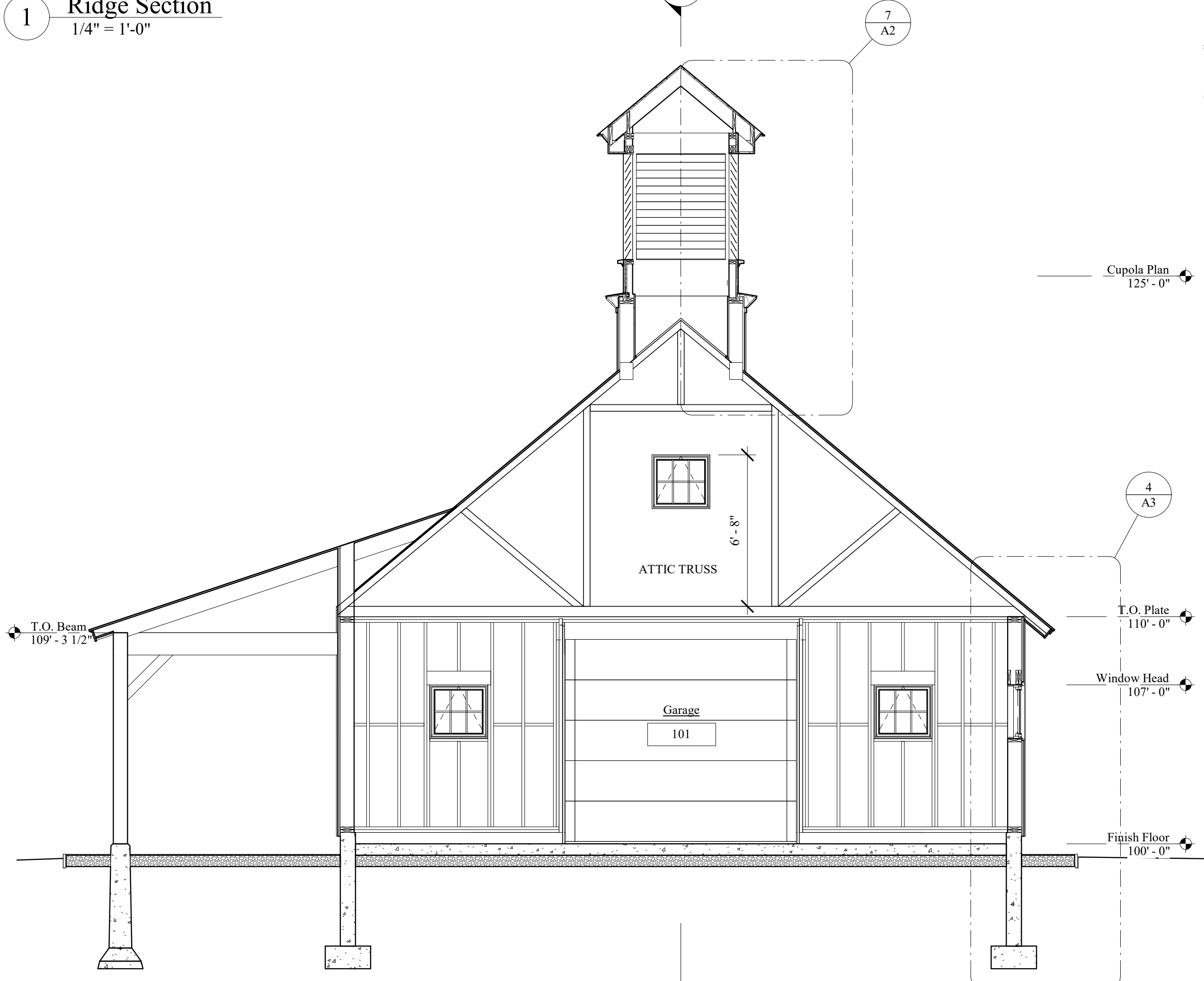
4 Typ. Wall Section
3/4" = 1'-0"



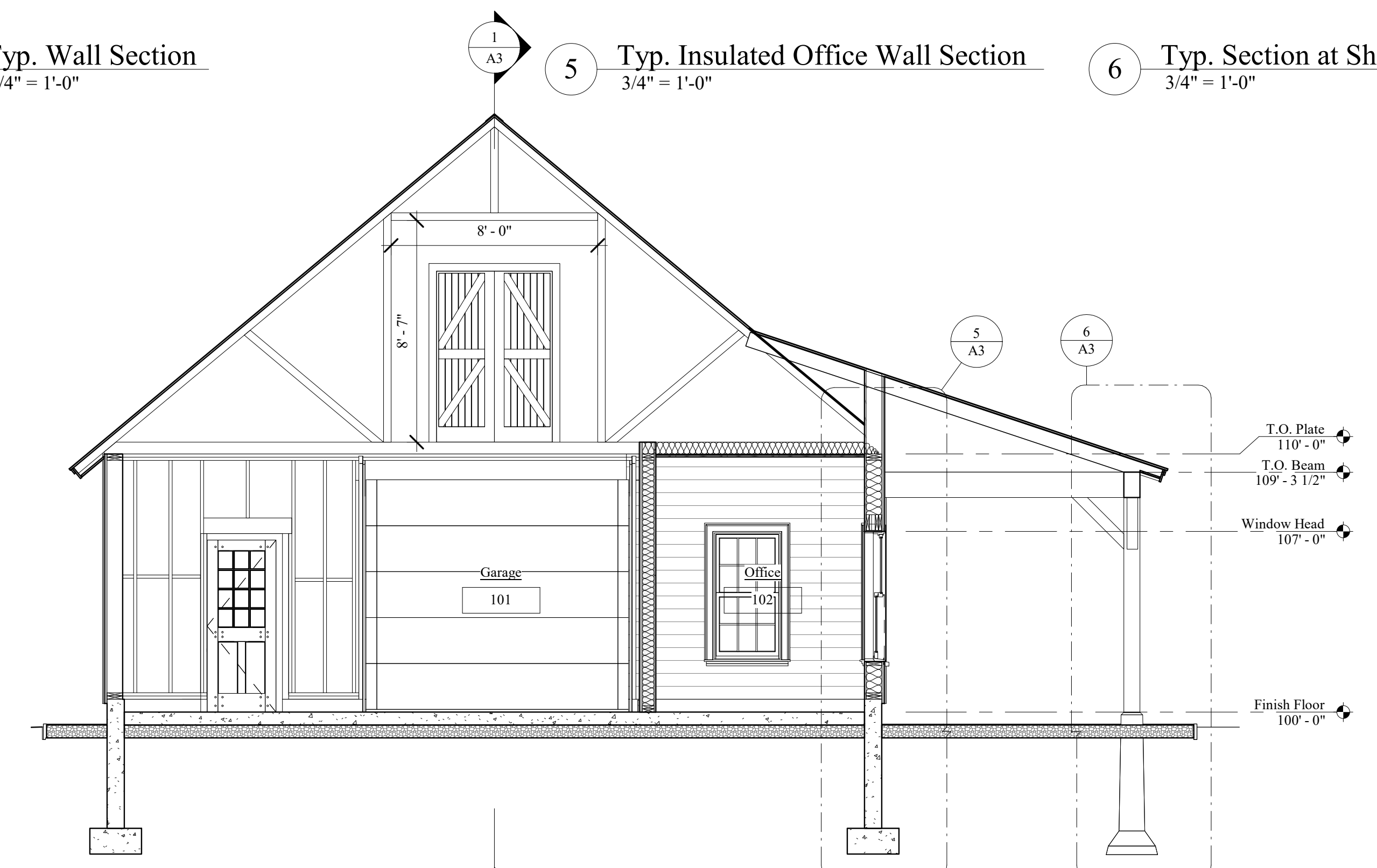
5 Typ. Insulated Office Wall Section
3/4" = 1'-0"



6 Typ. Section at Shed Roof
3/4" = 1'-0"



2 East Section
1/4" = 1'-0"



3 Office Section
1/4" = 1'-0"

Mountain Valley Treatment Center
Barn

Plainfield, New Hampshire
Randall T Mudge & Associates

Architects
85 DCH
Route 10
Lyme, New Hampshire

Sections

2112 Job No
25 AUG 21 Date
As indicated Scale
Revised

A3