

Ridge Vent

5/8 Advantech Ply

Corrugated Metal Roof

L-Valley's
Attic Truss
24" OC. 12/12

- Truss drawings to be submitted

ALUMINUM DRIP EDGE

(2) 2x6 SILL & PLATES

Pine Trim

8'-6" Walls

3/4 Pine
Ship-Lap

Black Dog Construction
Chris Gogan
24 Grannis Street
Claremont NH 03743

Vapor layer

10'6" W.

4000 PSI 4" CONC. FLOOR

2x6 EXT. STUD 24" O.C.

1/2 Rebar

2x6 FT SILL

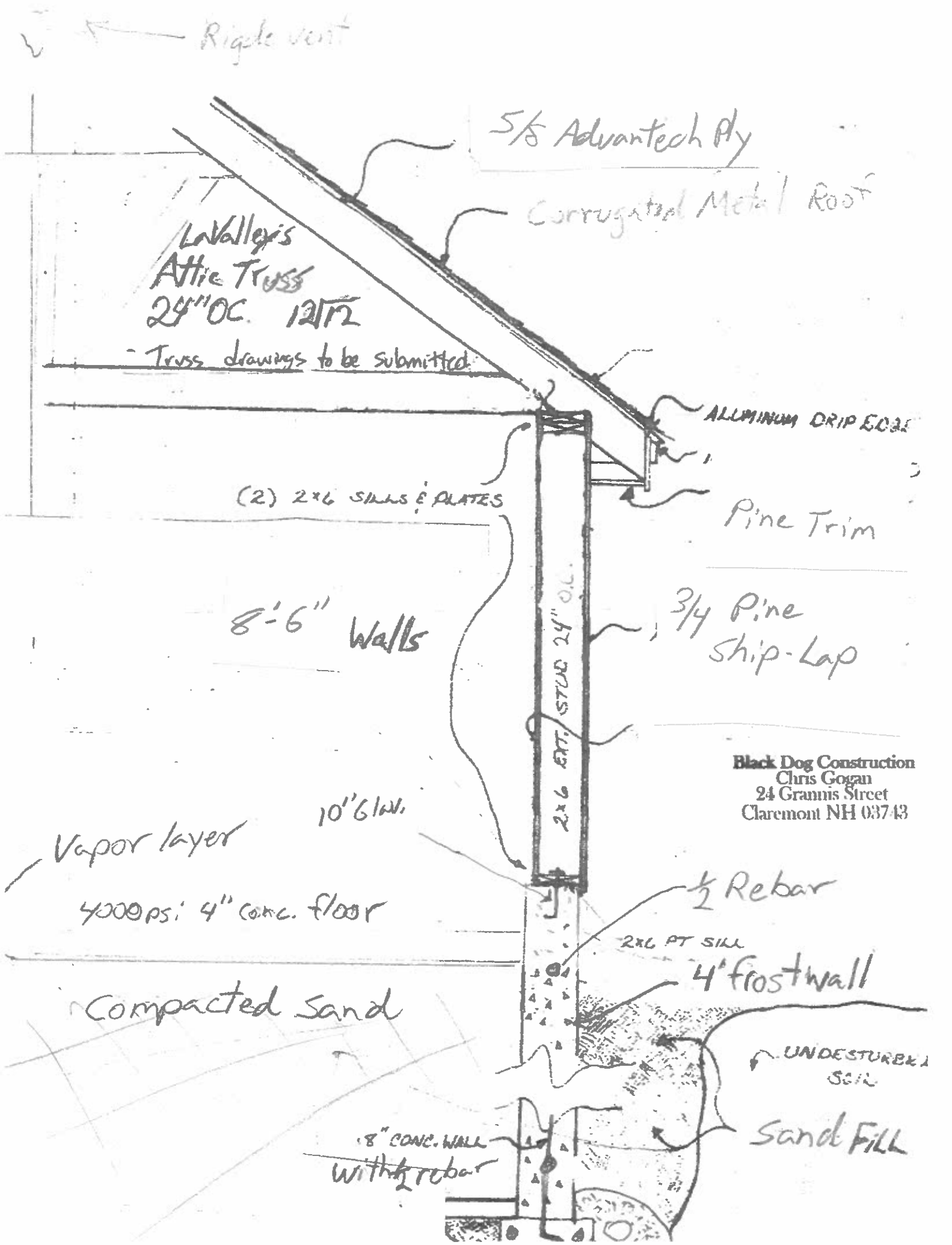
4' frost wall

Compacted sand

UNDISTURBED
SOIL

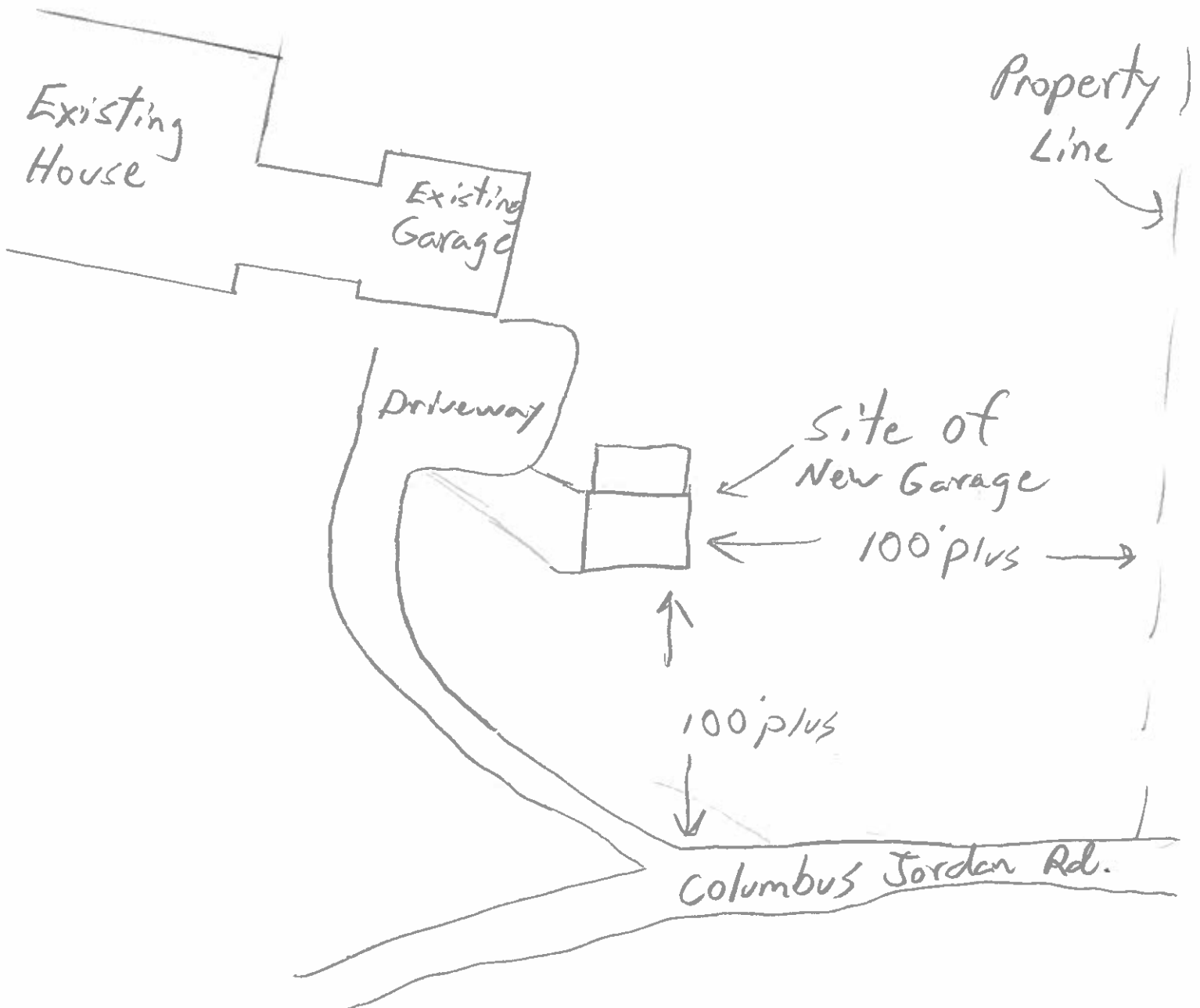
Sand Fill

8" CONC. WALL
with 1/2 rebar



Plot Plan 26.7 Acres

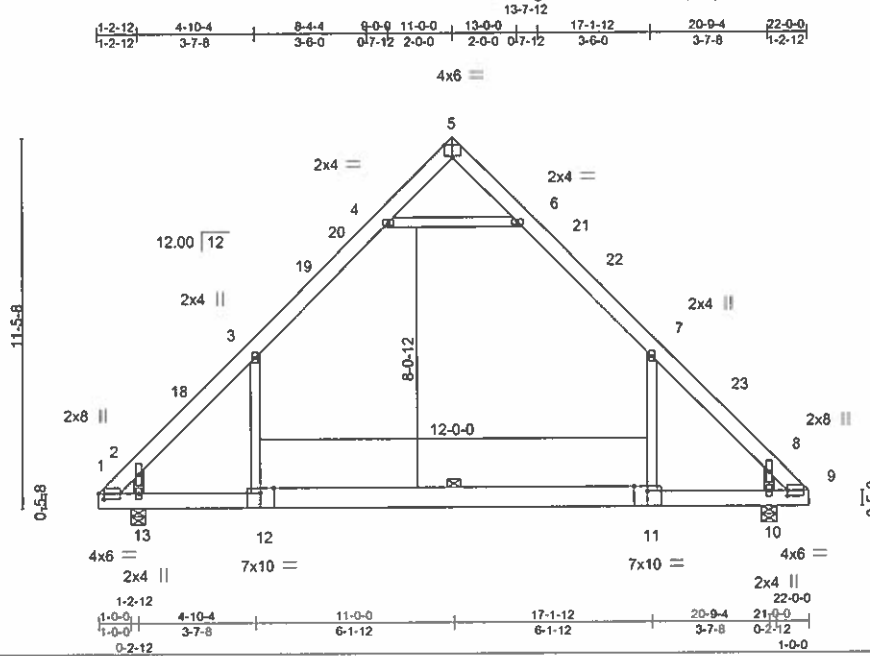
Black Dog Construction
Chris Gogan
24 Gramis Street
Claremont NH 03743



Job 2101JLM0037R	Truss T01	Truss Type ATTIC	Qty 13	Ply 1	Plainfield Job 144421724
---------------------	--------------	---------------------	-----------	----------	-----------------------------

LaValley Building Supply, Newport, NH - 03773.

8.430 s Nov 30 2020 MiTek Industries, Inc. Mon Jan 18 15:42:23 2021 Page 1
ID:nDNfgBlSPzEQx3A7aRUqtzjOI-PMEEslHGmzWd1eBJiSmieMVbup7Kip04iTUsMnzUJ_



Scale = 1:71.2

LOADING (psf)		SPACING- 2-0-0		CSI.		DEFL.		PLATES		GRIP	
TCLL	69.3	Plate Grip DOL	1.15	TC	0.90	in (loc)	l/defl	L/d	MT20	169/123	
(Ground Snow=90.0)		Lumber DOL	1.15	BC	0.77	Vert(LL)	-0.46 11-12	>508	360		
TCDL	10.0	Rep Stress Incr	YES	WB	0.49	Vert(CT)	-0.63 11-12	>370	240		
BCLL	0.0	Code IBC2015/TPI2014		Matrix-MS		Horz(CT)	0.01 10	n/a	n/a		
BCDL	10.0					Attic	-0.28 11-12	508	360		Weight: 149 lb FT = 20%

LUMBER-
TOP CHORD 2x6 SP No.1
BOT CHORD 2x6 SP No.1 *Except*
11-12: 2x8 SP 2400F 2.0E or 2x8 SP DSS
WEBS 2x4 SPF No.1 or 2x4 SPF No.2 or 2x4 SPF-S No.2

BRACING-
TOP CHORD Structural wood sheathing directly applied or 2-2-0 oc purlins.
BOT CHORD 9-4-0 oc bracing: 11-12
10-0-0 oc bracing: 1-13, 12-13, 10-11, 9-10

REACTIONS. (size) 13=0-5-8, 10=0-5-8
Max Horz 13=245(LC 13)
Max Grav 13=2094(LC 1), 10=2094(LC 1)

FORCES. (lb) - Max. Comp./Max. Ten. - All forces 250 (lb) or less except when shown.
TOP CHORD 1-2=-1044/0, 2-3=-2130/0, 3-4=-1458/120, 4-5=-230/347, 5-6=-230/347, 6-7=-1458/120,
7-8=-2130/0, 8-9=-1044/0
BOT CHORD 1-13=0/1185, 12-13=0/1166, 11-12=0/1179, 10-11=0/1160, 9-10=0/1184
WEBS 7-11=-307/752, 3-12=-307/752, 4-6=-1454/186, 2-13=-1658/140, 8-10=-1658/140

- NOTES-**
- 1) Wind: ASCE 7-10; Vult=130mph Vasd=103mph; TCCL=6.0psf; BCDL=6.0psf; h=25ft; B=45ft; L=24ft; eave=4ft; Cat. II; Exp B; Enclosed; MWFRS (directional) and C-C Exterior(2) 0-1-2 to 3-1-2, Interior(1) 3-1-2 to 11-0-0, Exterior(2) 11-0-0 to 14-0-0, Interior(1) 14-0-0 to 21-10-14 zone; cantilever left and right exposed ; end vertical left and right exposed;C-C for members and forces & MWFRS for reactions shown; Lumber DOL=1.60 plate grip DOL=1.60
 - 2) TCCL: ASCE 7-10; Pg= 90.0 psf (ground snow); Pf=69.3 psf (flat roof snow); Category II; Exp B; Partially Exp.; Ct=1.10
 - 3) Unbalanced snow loads have been considered for this design.
 - 4) This truss has been designed for a 10.0 psf bottom chord live load nonconcurrent with any other live loads.
 - 5) * This truss has been designed for a live load of 20.0psf on the bottom chord in all areas where a rectangle 3-6-0 tall by 2-0-0 wide will fit between the bottom chord and any other members.
 - 6) Ceiling dead load (8.0 psf) on member(s). 3-4, 6-7, 4-6; Wall dead load (5.0psf) on member(s).7-11, 3-12
 - 7) Bottom chord live load (40.0 psf) and additional bottom chord dead load (0.0 psf) applied only to room. 11-12
 - 8) Attic room checked for L/360 deflection.



January 18, 2021

Black Dog Construction
Chris Coxan
21 Gramis Street
Claremont NH 03743

20x28' Garage with 12' Lean-to

- NO Heat
- Power to be run by owner from house

2x12 Toe Screwed

2x8s screwed to Truss

3/4 Ship Lap

2x12 Rafter
2'-0" O.C.

2x12 Beam with

6x6 Post

← 12' →

← Anchored w/ Base Plate

5' Precast Concrete Pier

2x12 fastened together 2' O.C.

Notched to except 2x12 Through Bolted

