



Upper Valley Lake Sunapee
Regional Planning Commission

Memorandum

TO: Steve Halleran
FROM: Adam Ricker & Meghan Butts
DATE: March 2018
RE: **Bonner Road Safety Improvements**

In the fall of 2017 the Upper Valley Lake Sunapee Regional Planning Commission (UVLSRPC) conducted an assessment of Bonner Road in Plainfield. The objective was to identify possible traffic calming measures to reduce road speed and allow for safe access to the Plainfield Elementary School for those riding by bus or car and those walking or biking. Through the process UVLSRPC employees, town officials, and committee members identified several options to consider in the task of improving safety. The options are summarized below.

Findings

The data collection included two classification and speed traffic counts on Bonner Road. The first setup was east of the School Road between School Road and NH Route 120. At this location, the raw data showed there was an average of 556 cars per day. More than 65% of the traffic consisted of cars and light trucks, two-axle, long wheelbase, trucks, box trucks and vans made up approximately 28% of the overall traffic. The remaining seven percent of the traffic was comprise of a variety of classes, including buses, and two-axles vehicles with six tires.

In this section of road, the majority of vehicles, 86%, travelled at a rate of speed between 26 and 40 miles per hour. The 85 percentile speed east of School Road was 38 mph and 37 mph west of School Road. Almost 40% of vehicles travelled at speeds between 31 and 35 mph. The posted speed limit is 30 mph.

The second traffic count setup was west of School Road in the hill leading to Main Street. The raw data showed that the average daily traffic volume record was 455 cars per day. The predominate vehicle type, 62%, were cars and light trucks with 27% being two-axle, long wheelbase trucks.

The observed speeds on Bonner Road at this location included 80% of vehicles travelling between 26 and 40 miles per hour with 32% of them traveling between 31 and 35 miles per hour. Alarmingly, 10% of vehicles were traveling at speeds greater than 41 miles per hour.

The full reports, tables and graphs with the complete data are attached at the end of this document.

Bonner Road Improvements

A short term improvement could include signage. Installation of a speed sign with a digital read out of traffic speed could be installed to inform motorists of their speed. These signs are



moveable and could be placed in varying locations to keep drivers from becoming too used to their presence. Sign company SA-SO sells the product and they cost approximately \$1,500 per sign. The signs can include an optional software package that allows for full control of the sign, including limiting the time of day that the digital sign flashes. This allows the town to turn off the sign during the over night hours if it is positioned near a home where the glow of the sign may be a nuisance.

The sign could be used periodically on other roads in town that may have speed problems and is a relatively inexpensive measure to consider.

The Bonner Road Committee and the Police Department reported that the speed limit was already well enforced relative to their enforcement throughout town and with only limited staffing. We encourage the Police Department to continue to enforce the speed on the road.

Additionally, the town can consider improving the road markings on Bonner Road. The road could be lined with 10 foot lanes to allow for a small shoulder on either side of the road. The narrowed lane width would help to slow cars as drivers would feel more restricted, while the addition of a shoulder of 1-2' on either side of the road would allow a space for pedestrians and cyclists. Markings on the pavement that say "SCHOOL" could aid in notifying motorists of the approaching intersection and access to the school.



A series of speed bumps or speed tables could be added to address the speed of motorists on Bonner Road. Speed bumps and tables are generally fairly effective, though they can create some difficulty for maintenance personnel, especially in the winter. Speed tables can be installed as inexpensively as \$2,500 per bump. If speed bumps or tables are chosen, we would recommend that one be installed between Route 120 and the School and one between Main Street and the School.

Long range planning for the road may include the construction of sidewalks along Bonner Road to access the School. Sidewalks would not be considered an immediate fix or an inexpensive one. The Vermont Agency of Transportation released a report in 2014 estimating the complete cost of sidewalks construction per foot. For a five foot wide concrete sidewalk with a granite

curb, the sidewalks were estimated to cost \$239 per linear foot to construct. With Bonner Road being an estimated 3,300 feet, that would be an estimated cost of about \$800,000 for sidewalks from Route 120 to Main Street. Obviously this figure could be substantially more depending on site work that needs to be completed. For example there are places where it is reasonable to assume that the construction of sidewalks would require significant excavation and retaining walls to accommodate the extra width of the road area needed for the sidewalks. The price would also only include sidewalks on one side of the road. The addition of sidewalks would provide the safest environment for pedestrians and drivers. However, it would be advised to consider adding enough width to the road surface to allow for a bike lane if sidewalks were pursued.

During the course of the meetings with the Plainfield Roads Committee, the idea that seemed to be most exciting to explore further was to turn the intersection of School Road and Bonner road from a one-stop sign intersection to a three-way stop. Adding stop signs to both directions of travel on Bonner Road would create a three way stop. The stop would force traffic on Bonner Road to stop which would help to control speed as cars travel through the intersection. It would also allow cars exiting Bonner Road to enter traffic more easily with traffic being stopped on Bonner Road. It is important to note that if this option is wished to be pursued, it will require further study by a transportation engineer. The alignment of the intersection may need adjusting to provide the safest intersection. The intersection benefits from few physical constraints immediately adjacent. If the current alignment is sufficient, the change could be accomplished relatively inexpensively. It would require the contracting for an engineering study, the cost of stop signs and repainting the roadway.

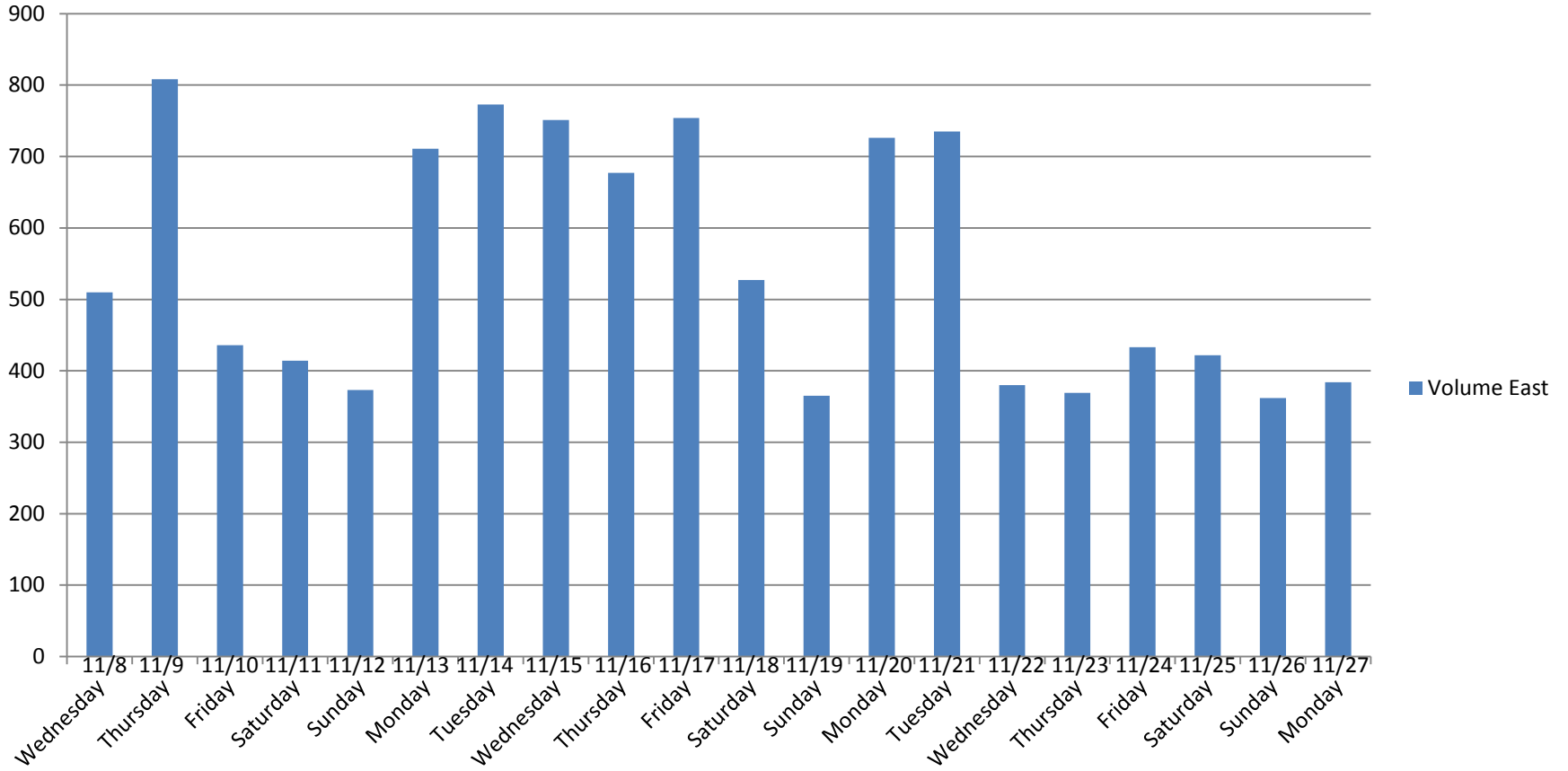
If the town were to pursue the complete reconstruction of Bonner Road adding sidewalks and bike lanes, the intersection may be a good candidate for a small roundabout. The roundabout would keep traffic flowing while forcing motorists to slow down. It is important to note that this would only be a feasible option if pursuing with the addition of pedestrian amenities like sidewalks. As previously mentioned the land adjacent to the intersection is mostly flat and open to allow for the space needed for a roundabout. The cost would be considerable, but it could possibly provide the most complete and safe solution.

Each of these provides a varied level of effectiveness and cost associated with the implementation. However, a combination of the methods will provide the most comprehensive approach. Narrowing the road and adding a shoulder with restriping, improving signage for the school and placing a digital speed sign may be the best combination for short term improvements. We encourage the town to pursue the further study and engineering of a three way stop at the school intersection. When completed in conjunction with the aforementioned improvements it could provide a much safer road for residents and school personnel at a reasonable cost.

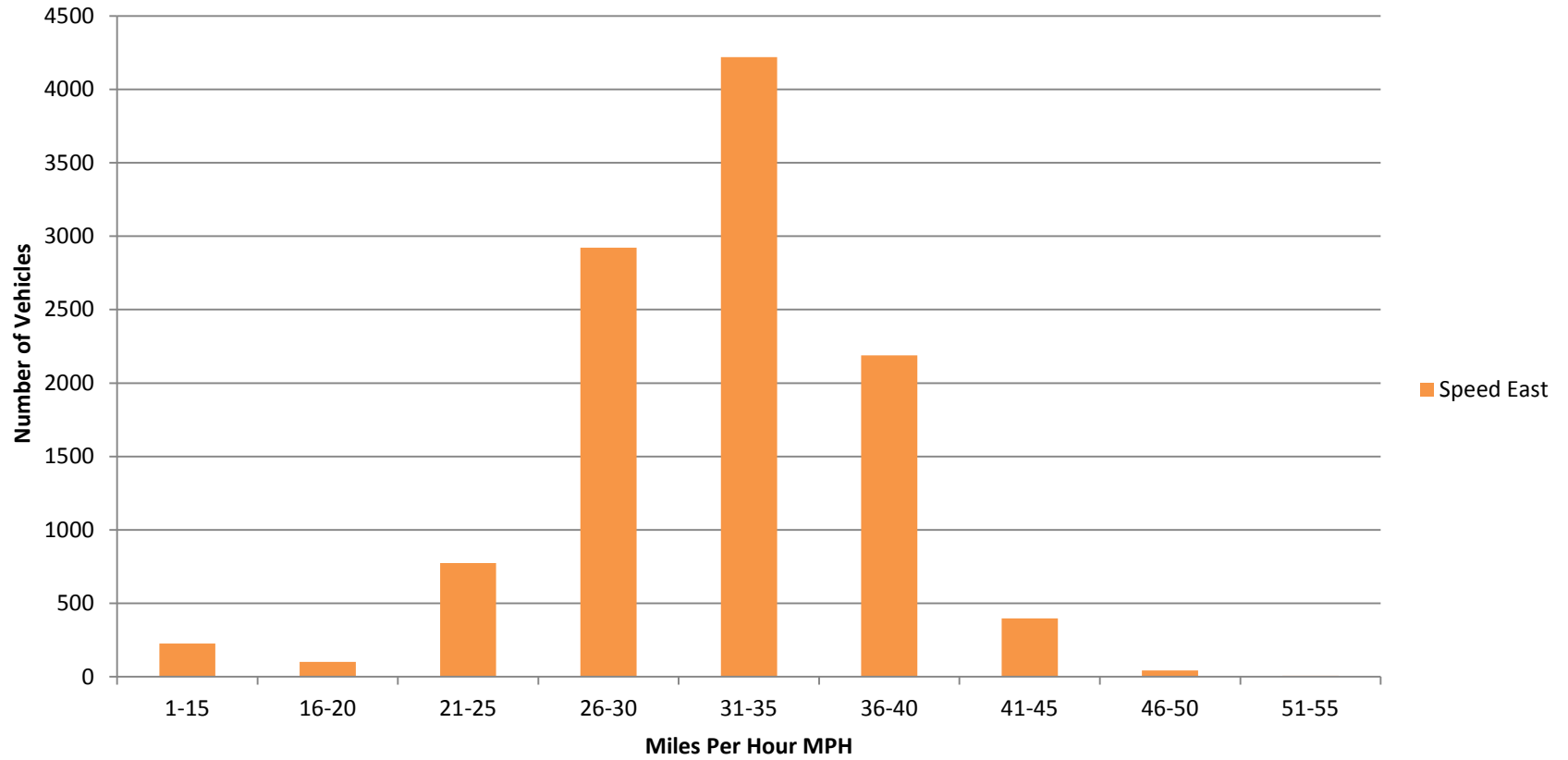
Technical Data

On the following pages, the graphs display the results of the data collection on Bonner Road.

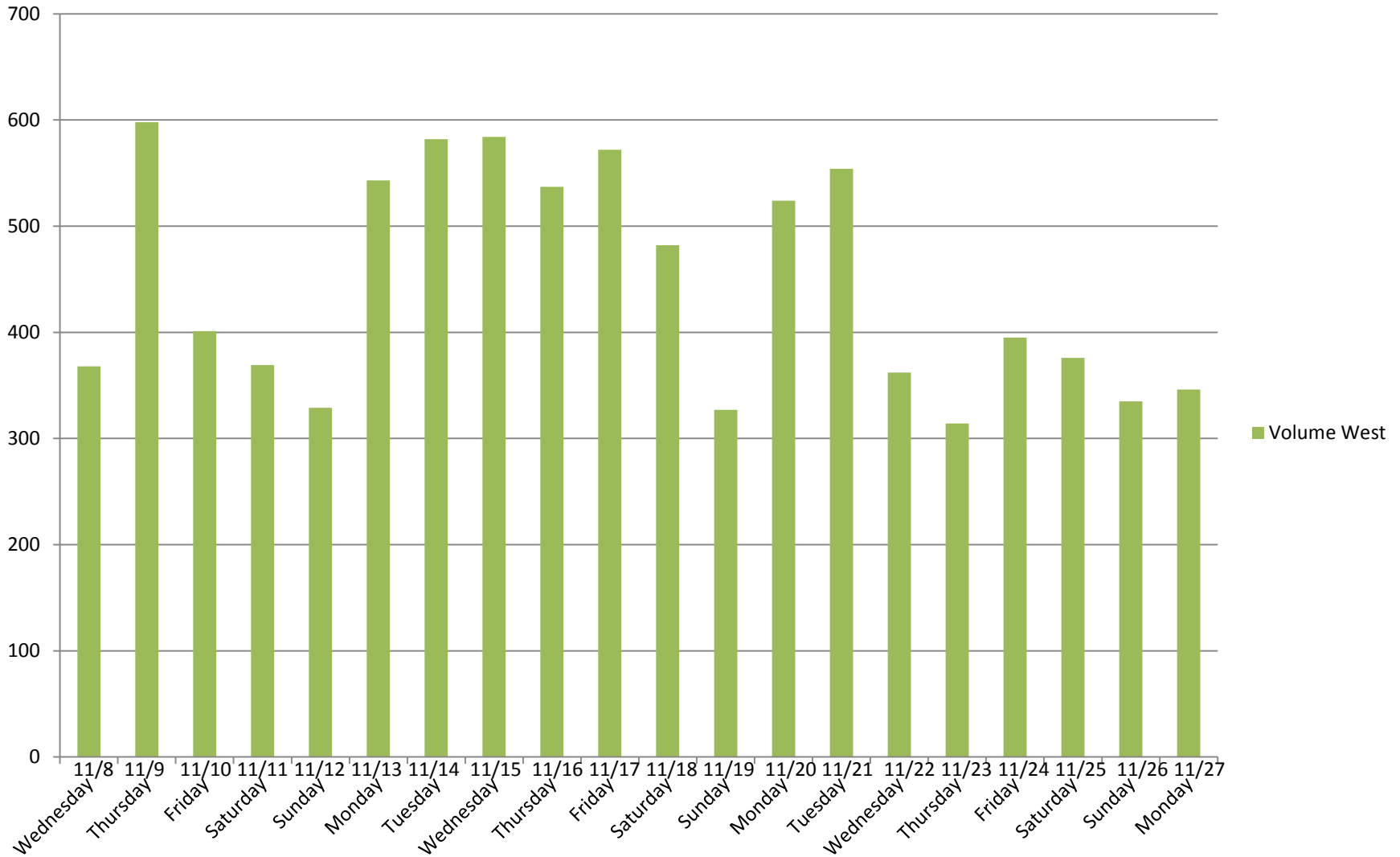
Volume East



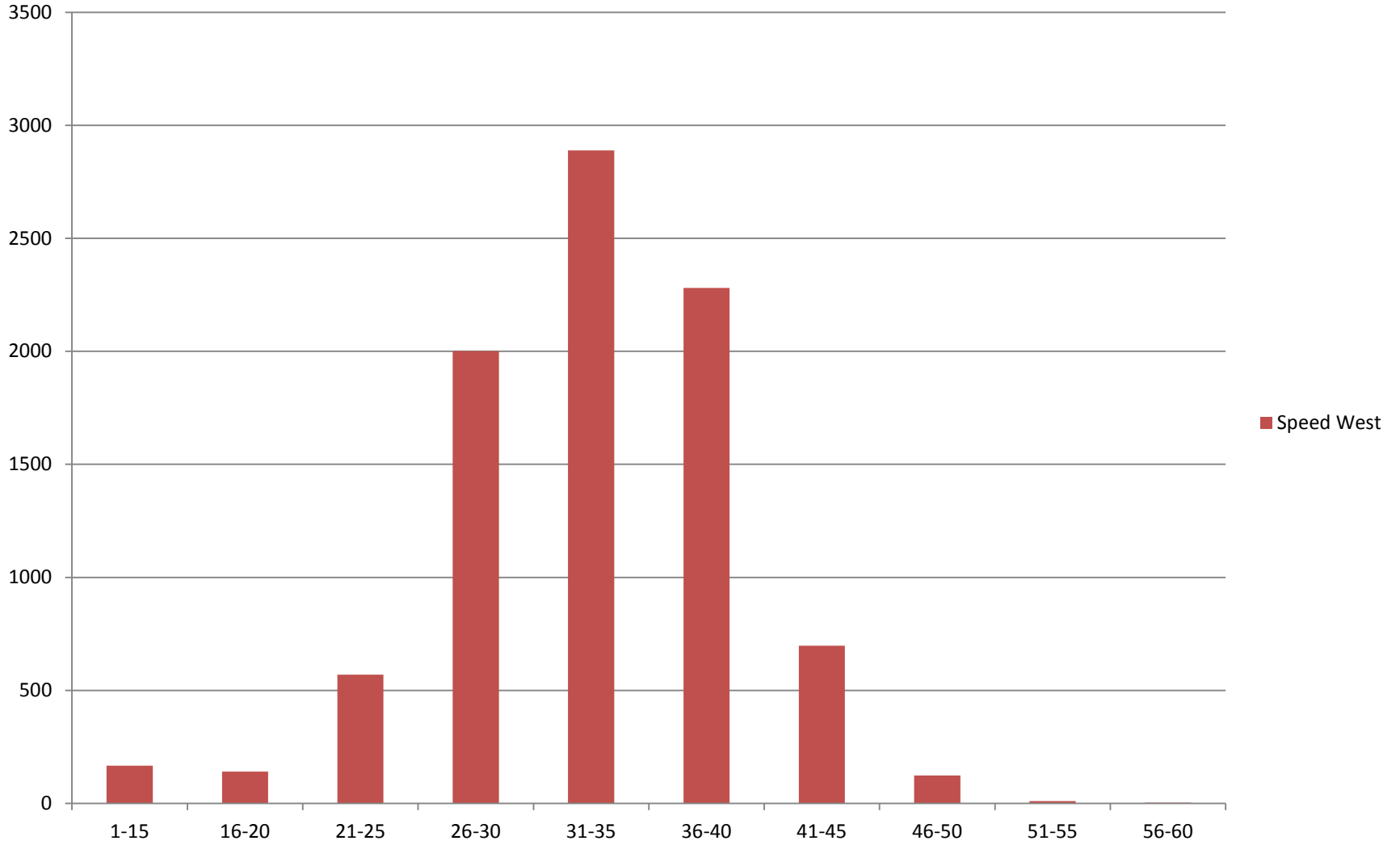
Speed East



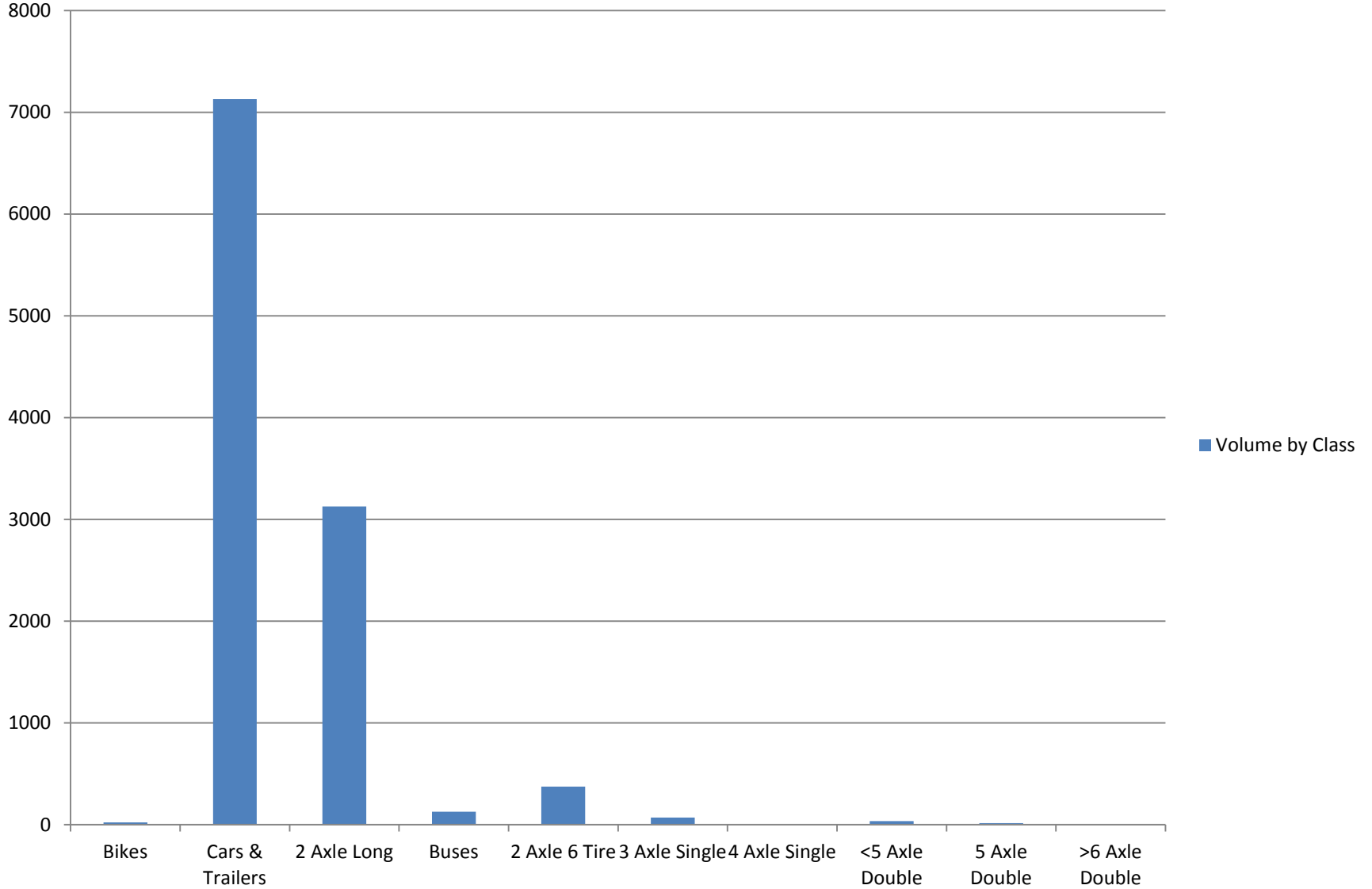
Volume West



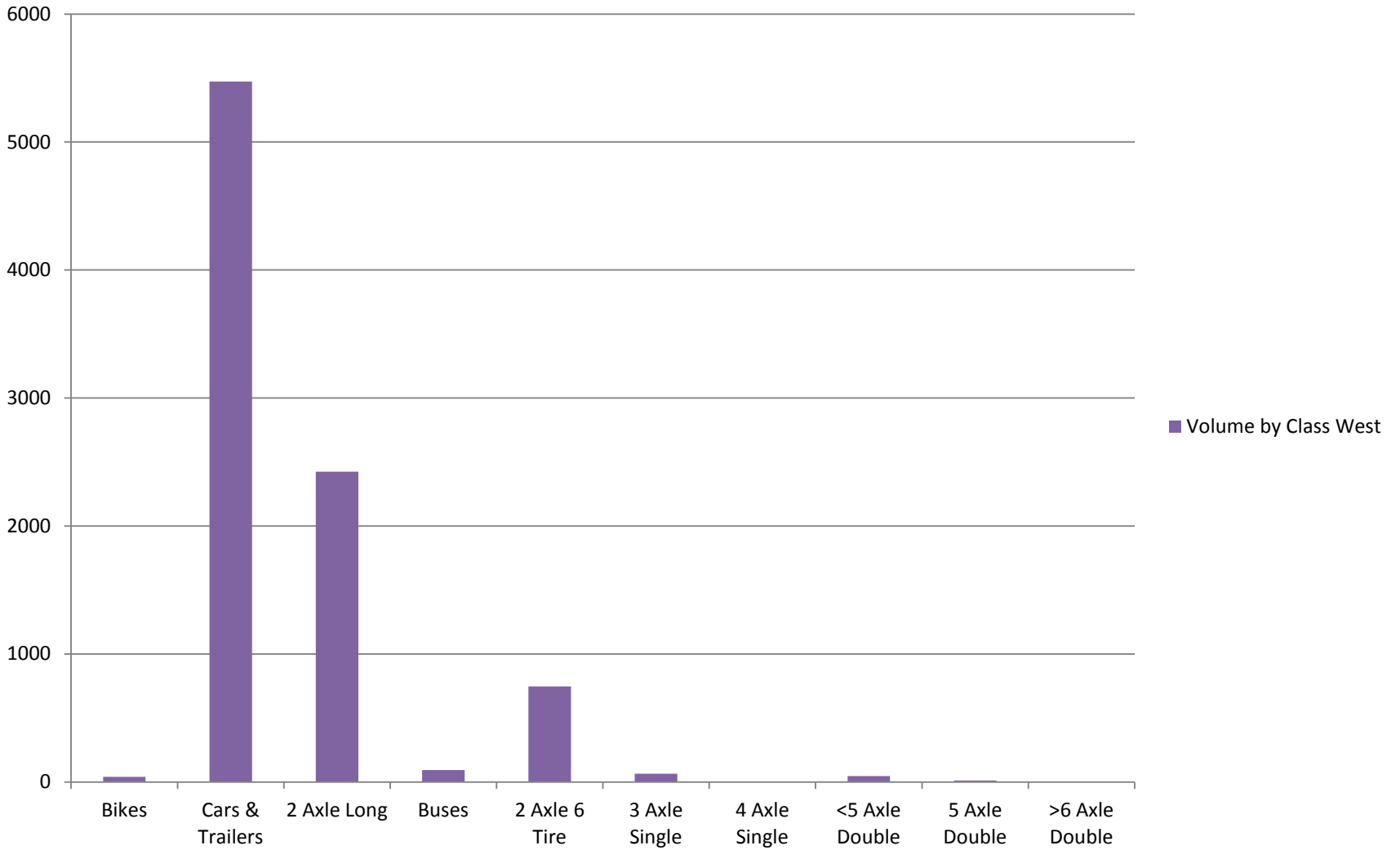
Speed West



Volume by Class

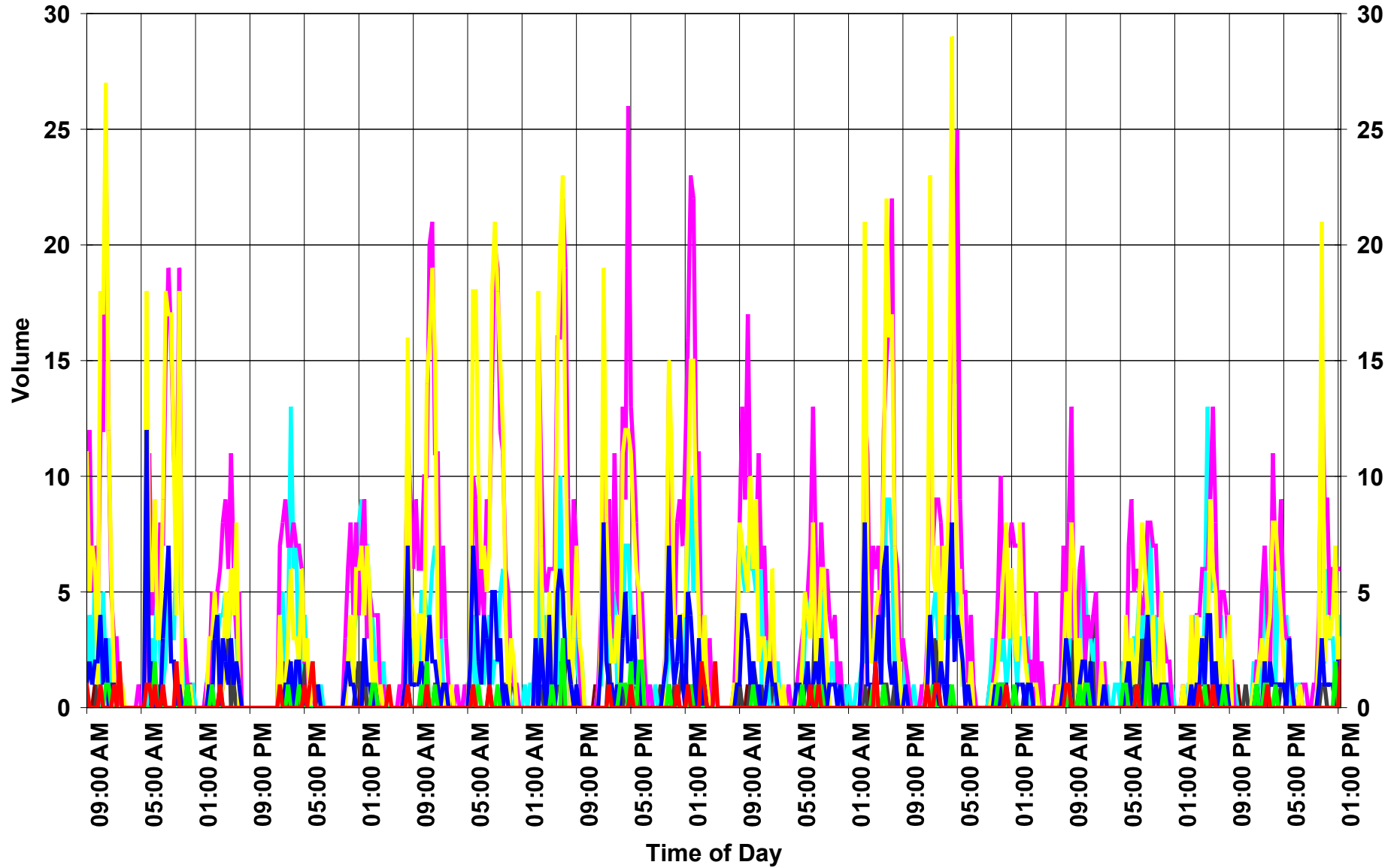


Volume by Class West



Bonner Road East of School - Speed

- 1 - 15
- 16 - 20
- 21 - 25
- 26 - 30
- 31 - 35
- 36 - 40
- 41 - 45
- 46 - 50
- 51 - 55
- 56 - 60
- 61 - 65
- 66 - 70
- 71 - 75
- 76 +



ElanCity



DETECT • INFORM • SECURE

THE EVOLIS RADAR SPEED SIGN



Elan City Inc.

10-34 44th Avenue – Long Island 11101 NY

646 878 6259 – sales@elancity.net

www.elancity.net

CONTENT

ABOUT US	2
WHO WE ARE	2
MISSION STATEMENT.....	2
REFERENCES	2
RADAR SPEED SIGNS: A POPULAR AND EFFECTIVE CONCEPT	3
THOUSANDS OF LOCAL GOVERNMENTS EQUIPPED	3
HOW DOES IT WORK?	3
KEY BENEFITS.....	3
EVOLIS RADAR SPEED SIGN: THE WORLDWIDE MARKET REFERENCE	4
PRESENTATION.....	4
ACCURATE DETECTION.....	5
EYECATCHING DISPLAY OF SPEED	5
ENHANCED EFFICIENCY IN SPEED REDUCTION THROUGH DISPLAY OF TEXT MESSAGES	6
HIGH BRIGHTNESS LEDS FOR BOTH DISPLAYS (SPEED & TEXT)	6
RESISTANT AND ESTHETIC STRUCTURE.....	7
POWER SUPPLY: LOW CONSUMPTION ENABLE NUMEROUS POWER OPTIONS	8
SET-UP SOFTWARE SUITE	9
TRAFFIC DATA: HIGH MEMORY STORAGE & USER-FRIENDLY.....	10
SAFE & EASY INSTALLATION	11
COMPREHENSIVE AND REACTIVE SERVICE	12
INSTALLATION	12
2-YEAR WARRANTY	12
REACTIVE HOTLINE.....	12
KEY FEATURES	12

ABOUT US

WHO WE ARE

- Created June 2005
- Activity: Design and manufacture of electronic display products for local governments
- Representation in + 45 countries
- Customers: more than 5,000 municipalities, DOTs, police departments, universities...
- Speed signs installed: more than 8,000 units

MISSION STATEMENT

- Provide a range of products dedicated to local communities: quality, reliability, ease of use
- Innovative design and user friendly products
- Help you at all stages of your projects
- Offer a reactive and qualitative customer service



REFERENCES

More than 6,000 satisfied customers worldwide:



“Within the first few days of installing the speed signs from Elan City, we noticed vehicles slowing down at our toll plazas. Installation was a breeze, software was trouble-free and the customer support was excellent. This product is definitely living up to our expectations.”

Eric Becker -Director of Roadway Operations - Kansas Turnpike Authority



“Evolis provided us a simple and fairly inexpensive solution for both monitoring vehicle speed while at the same time providing visual deterrent to motorist. The sign provides motorist speed in addition to providing a customized message display. In addition this portable speed sign provides us statistical feedback that aides us in furthering our enforcement efforts. The customer service department far exceeded our past experience with other vendors.”

Chief Joseph A. Sinagra - Saugerties Police Department

RADAR SPEED SIGNS: A POPULAR AND EFFECTIVE CONCEPT

THOUSANDS OF LOCAL GOVERNMENTS EQUIPPED

In less than 10 years, the number of governments using radar speed signs has dramatically increased, for the following reasons:

- » Efficiency in traffic calming: 15 to 20% average, measured at our customers.
- » Proven long term efficiency, especially for permanent installations.
- » Popularity among residents, school areas...
- » Ability to generate traffic statistics.

HOW DOES IT WORK?

A radar speed sign is used for traffic calming by confronting motorists with their speed. They are commonly installed at village entries, residential areas, schools zones, roadwork zones...

Speed is detected by a Doppler radar located inside the speed sign casing and displayed on a LED board. Messages can also be displayed according to the detected speed (slow down, danger...)

Speed displays also provide useful traffic information data (average and maximum speed, amount of vehicles...).

KEY BENEFITS



EFFICIENT SPEED REDUCTION



EASY TRAFFIC DATA ANALYSIS



POPULAR AND VISIBLE ACTION



The Minister of Transportation Québec, Mr Robert Poëti, inaugurating the national Road Safety campaign with the first Evolis radar of a massive installment plan.

EVOLIS RADAR SPEED SIGN: THE WORLDWIDE MARKET REFERENCE

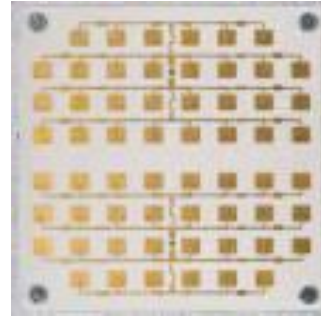
PRESENTATION



ACCURATE DETECTION

The Doppler antenna is the key element of a speed display. It has to provide:

- Most precise speed detection
- Long range



The Evolis Doppler antenna is:

- Located inside the casing
- Accuracy: +/-1%
- Range: up to 1,000 ft (adjustable)
- Detection: both sides of traffic. Only speed of on-coming vehicles is displayed. Data of on-coming and out-going vehicles are collected and saved to generate traffic statistics.
- Angle: 12° Horizontal 25 % Vertical

EYECATCHING DISPLAY OF SPEED

Unlike most products on the market that have only amber LEDs, Evolis can display speed in 3 colors for a much stronger calming effect:

- Display in **GREEN** or **AMBER** for speeds below speed limit.
- **RED** for excess speeds (flashing for critical speeds)



ENHANCED EFFICIENCY IN SPEED REDUCTION THROUGH DISPLAY OF TEXT MESSAGES

The simultaneous display of both messages and speed enhances the traffic calming effect. Drivers are further compelled to reduce their speed with radars that display messages than those who simply display the detected speed. Because of this, it is now mandatory in many countries for all radar speed signs to display messages.




Unlike other products on the market which only display speed, or those who alternate 1 message with the speed, the Evolis radar speed sign displays the SPEED at the same time as (5 programmable) TEXT MESSAGES:

MODEL	Competition	Competition	THE EVOLIS
			
Display	Speed only	Speed or text	SPEED AND TEXT
Calming effect	5-10% drop	10-15% drop	15-20% drop

Depending on the detected speed, up to 5 different messages can be displayed on the "Full-graphic" matrix 64*16 Pixels:



Examples of messages:

Type of message	Line height	Number of characters
1 Line of Text 	6.3'	Up to 8
2 Lines of Text 	3'	Up to 11
Icons 	6.3'	

HIGH BRIGHTNESS LEDS FOR BOTH DISPLAYS (SPEED & TEXT)

- OSRAM SMC high brightness low consumption LEDs
- Lifetime > 100.000 hours
- High visibility process with contrast lenses
- Automatic brightness adjustment control








RESISTANT AND ESTHETIC STRUCTURE



Elements	Specifications	Benefits
Front Face	Antiglare Polycarbonate. Convex shape	Excellent impact resistance. Excellent visibility even by bright sunlight
Casing	Reinforced Polycarbonate ABS resin. No external metal components (except stainless steel locks). Structural performance (charges, deformities, Passive Safety, resistance to shock and vibration) fully meets the requirements of world standards.	Excellent impact resistance. No corrosion
	Integrated Battery box with key-secured access. Dial selector and USB port located in the battery box.	Discreet and secure. Reduces the risk of vandalism.
	Weight below 16lbs. Dimensions 27"x27"x6"	Easy installation and removal. Limits the size of poles and concrete blocks. Reduced mechanical wear and tear.
	Waterproof IP 67 (NEMA 3). Monobloc structure.	Eliminates the risk of failure by oxidation. Any waterproof casing incorporating batteries must provide a solution for depressurization (the Evolis uses of a "Goretex" vent)
	Light color	Light colors attract and generate less heat than dark color. The lifetime of the electronics is increased. (+ 20% on average equal component)
	Color and anti-UV treatment integrated into the ABS resin	No paint, therefore no possible alteration (peeling...). Increases the lifetime of the product.

POWER SUPPLY: LOW CONSUMPTION ENABLE NUMEROUS POWER OPTIONS

DISPLAY	Average current	Average power at 12 Volts
Speed	0,3 Ah	3,6 W
Speed and message	0,8 Ah	9,6 W
Stand by (no display)	0,1 Ah	1,2 W

Battery	Mains	Street light	Solar Panel
			
Recharge with an external charger	Direct power supply. An internal charger supplies 12 Volts.	An internal quick charger (4 Ah) enables battery recharge during street light operation. Battery ensures day operation.	<p>2 Batteries 12 Volts 22 Ah with solar specific technology</p> <p>internal solar charger with intelligent charging management</p> <p>80 Watts solar panel. "Polycrystalline" High Performance.</p> <p>Dimensions: 38'x27'. Compact size prevents from windage. Charging capacity up to 5,3 A.</p> 

SET-UP SOFTWARE SUITE

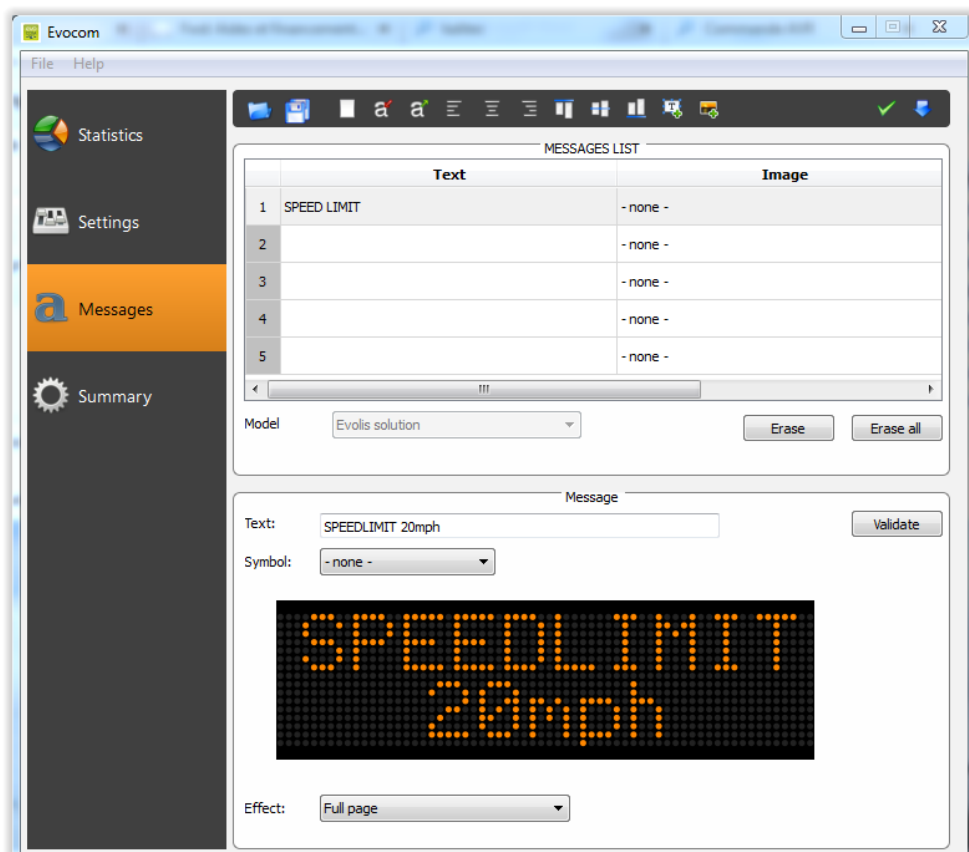
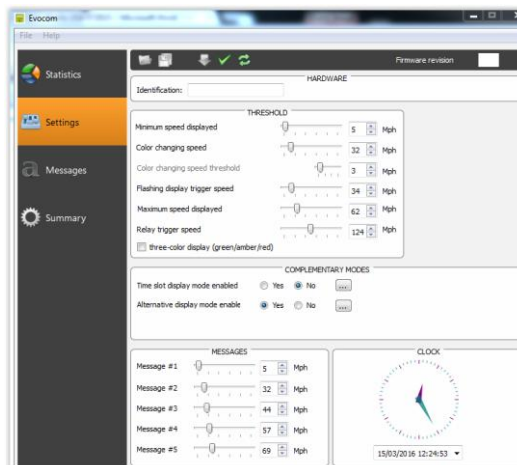
Communication with the speed display

Can be done by :

- USB (key secured access to USB plug)
- Bluetooth (secured by code) with PC, Mini Pc or touchpad (Android or Windows)
- Web. G.P.R.S. (upon request)



Change the parameters with Evocom set-up software:



Unlimited version for Windows. Evocom can be installed as many times as requested.

TRAFFIC DATA: HIGH MEMORY STORAGE & USER-FRIENDLY

- Internal memory of 8MB (more than 1.000.000 vehicles)
- Accuracy of speed measurements: +/-1 mph
- Each detection is precisely recorded and time-stamped

Data are collected using the software Evocom.

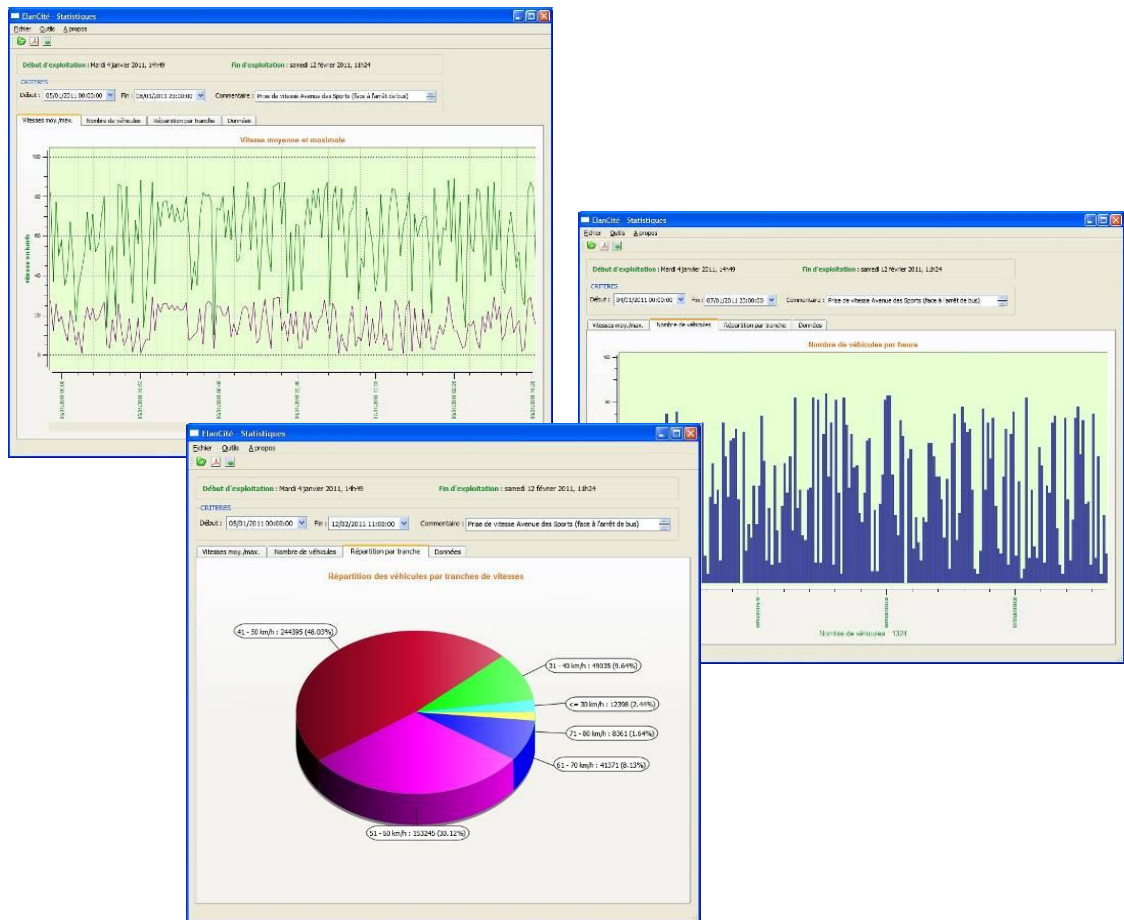
They are then analyzed using our software Evograph (unlimited version).



Several charts can be generated:

- Distribution of vehicles by speed range
- Maximum speed
- Percentiles: V30, V50 and V85
- Amount of vehicles

Data can be exported to Excel for further analysis or directly in PDF reports for mailing, printing and video presentations.



SAFE & EASY INSTALLATION

Step 1: mount the bar onto the pole



Step 2: secure the radar to the bar and lock it into place (optional) (pad lock not included)



Step 3: Insert the battery



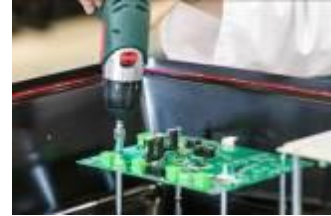
Step 4: select the desired speed zone on the dial selector



THE EVOLIS RADAR SPEED SIGN IS NOW UP & RUNNING!

The Evolis does not require further adjustments.
Simply install the sign perpendicular to the traffic flow.

COMPREHENSIVE AND REACTIVE SERVICE



INSTALLATION

Evolis radar speed sign was designed to be quickly and easily installed by non-technician people. You can save on installation expenses by installing yourself. Alternately, any local service business (electrician, road works...) will do it at limited time and cost.

2-YEAR WARRANTY

Evolis radar speed signs are warranted during 2 years from installation date (except vandalism), on parts and labor.

In case of default device, our service department will proceed to a phone diagnosis. If a manufacturing default is proven, we proceed to factory return within 3 working days, and repair and shipping within 10 working days from receipt of default product.

WARRANTY CONDITIONS AND DEADLINES ONLY APPLY IF ORIGINAL PACKAGING IS KEPT BY CUSTOMER!

REACTIVE HOTLINE

Our service team helps on any question related to the use of our devices.

KEY FEATURES

- ▶▶ Tested and proven technologies: + 8.000 units installed worldwide
- ▶▶ Lightweight: easy to install and rotate
- ▶▶ 3 LEDs digits: increased visibility and traffic calming effect.
- ▶▶ Large sized matrix for messages
- ▶▶ No corrosion nor color fading thanks to ABS resin design
- ▶▶ User friendly software for set-up and traffic data analysis



The portable, pole-mounted **EVOLIS Radar Speed Sign** is the ideal traffic-calming tool for any traffic scenario and environment. At only 19lbs, constructed from robust ABS Injection Molded Resin, the Evolis RSS was ingeniously designed for easy portability and product longevity.

The superior Doppler radar technology incorporated within the Evolis Radar Speed Sign offers an extended vehicle detection range of over 1,000 feet. The high visibility of the 14" speed digits, enabled by 3 rows of ultra-bright, tri-color, LEDs combined with the simultaneous display of programmable messages, helps correct driver behavior with an average **decrease of 25% in overall speed!**

The EVOLIS RSS is available as a battery-operated or solar-powered, full-option package, including all the necessary power accessories for immediate functionality. Each pack also includes bi-directional traffic data collection and comprehensive traffic analysis software, elevating the EVOLIS Radar Speed Sign from an effective traffic calming device to **an indispensable ally in speed infraction prevention and enforcement.** This sophisticated service has **NO** subscription fees and the updates are entirely **FREE** for life!

The GLOBAL favorite!

13,000+ EVOLIS Radar Speed Signs installed in
8,000+ communities WORLDWIDE!

Each Package Includes:

- ✓ 28"X 28" Evolis Radar Speed Sign (2 power choices)
- ✓ Highly visible 14" speed digits: 3 rows of tri-color LEDs
- ✓ Customizable message display
- ✓ Bi-directional traffic data collection
- ✓ Comprehensive analysis & configuration software
- ✓ FREE updates & NO subscription fees!
- ✓ Bluetooth® + smartphone app
- ✓ Mounting kit & specific accessories for solar or battery-operated packs
- ✓ 2 year warranty



 (646) 878-6259

 www.elancity.net / sales@elancity.net



SPEED DISPLAY	
SPEED DIGITS	Height: 14", Display: 7 segment
"YOUR SPEED" legend	1.26" Highway-Gothic font
LEDs	Ultra-bright, 3-row thick LEDs. Amber-only mode or tri-color: Amber, Green and Red.
LED ANGLE	30° cone angle, auto-dimming
VISIBILITY	1,000+ feet
POWER CONSUMPTION	Ultra-low power consumption. Average <5W
FLASH RATE	Default setting: 54 cycles/minute. Configurable
TEXT DISPLAY	
LEDs	Ultra-bright, Amber
MESSAGES	Pre-programmed or entirely personalized
SIZE-FONT / GRAPHICS	Choice of size and font, 1 or 2 lines of text
DETECTION	
DOPPLER RADAR	Bidirectional, K-Band, 24.125 GHz (FCC part 15 compliant)
ACCURACY	+/- 1 Mph, 99% accuracy
BEAM WIDTH	12° Horizontal – 25° Vertical
SPEED DETECTION	5 – 160 Mph
DETECTION RANGE	500ft to 1,000ft (configurable)
CASING	
MATERIAL	Robust, anti-corrosive ABS injection molded resin; Curved polycarbonate front face
SIZE / WEIGHT	Dimensions: 28"H x 28"W x 6"D Weight: 19lbs. (without batteries)
WATERPROOF RATING	NEMA 4R / IP 65
COLOR	UV treated light grey (other colors available)
TEMPERATURE RESISTANCE	-40° F to +140° F (operational in extreme weather conditions)
ELECTRICAL SAFETY FEATURES	Two fuses (internal and external), internal pressure safety valve
BATTERY ENCLOSURE	Capacity to hold up to 2 batteries; manual dial for factory setting speed thresholds + SP
CONFIGURATION	
EVOCOM Software	Software for radar configuration + FREE updates
COMMUNICATION	USB, Bluetooth, EVOMOBILE Smartphone application and GPRS (Optional)
THRESHOLDS	Speed (min, limit, max), anti-racing, flashing, color change (if activated)
TIMER MODE (School-zone mode)	Alternative speed threshold: up to 2 settings / 4 time slots per day
STEALTH MODE	Continuous traffic data collection with blank display
TRAFFIC DATA ANALYSIS	
EVOGRAPH Software	Software for traffic data analysis + FREE updates & NO subscription fees ever
SPEED	Average and maximum speed, 85th percentile, distribution per speed group
COUNT	Estimated vehicle count
TYPE	Bi-directional, time-stamped data
MEMORY STORAGE	Up to 1 million vehicles
FORMAT	Charts and graphs in Excel and/or Pdf form, for easy report printing
POWER OPTIONS	
"Solar-Mobile": Solar-powered	Portable, fully autonomous, powered through solar panel and batteries
"Ultra-Mobile": Battery-operated	Portable, fully battery-powered with average 7 day autonomy, includes external charger
"AC": City lighting (available in certain states)	Stationary, powered by battery charged through and dependent on city lighting
ACCESSORIES	
MOUNTING KITS	Curved, ABS-injected resin, universal mounting-bar (pole and pole straps not included)
SOLAR PANEL	32" X 37", 80 watt solar panel w/ aluminum bracket mounting kit
BATTERIES	12V/22AH batteries included: AC X 1, Solar-Mobile X 2, Ultra-Mobile X 4
EXTERNAL CHARGER	12V external battery charger (included in Ultra-Mobile pack)

ELAN CITY
 10-34 44th Drive
 Long Island City, NY 11101
 United States

Phone. : (646) 878-6259
 Fax. : (646) 770-3906
 Email: sales@elancity.net

Shipping address:

Town of Plainfield
 351 stage road
 Plainfield, CT 03781
 United States

Invoice address:

Town of Plainfield
 351 stage road
 Plainfield, CT 03781
 United States

Town of Plainfield
351 stage road
Plainfield, CT 03781
United States

Tel: +16034693201

Quote N° S02154

Customer Reference	Quote Date	Contact	Terms of payment
	08/02/2018	DENNIS Graham	

Description	QTY	Each	Disc.(%)	Ext. price
[01112] 14" Solar Evolis Radar Speed Sign EVOLIS Radar Speed Sign with Programmable Message Display; Internal Solar Power Regulator; Traffic Data Collection + Analysis Software with NO Subscription Fee; Bluetooth & Smartphone App; Mounting Kit (Mounting bar)	2.00 Unit(s)	3,250.00	0.00	\$ 6,500.00
[028] 12V 22Ah Battery 12V 22Ah Battery	4.00 Unit(s)	0.00	0.00	\$ 0.00
[0223] 80W solar panel with mounting kit and connection cables	2.00 Unit(s)	0.00	0.00	\$ 0.00
[99900] Discount TWIN PACK SPECIAL	1.00 Unit(s)	-1,001.00	0.00	\$ -1,001.00
Delivery Charge	1.00 Unit(s)	300.00	0.00	\$ 300.00
			Total:	\$ 5,799.00
			Taxes:	\$ 0.00
			Total:	\$ 5,799.00

To place an order, please fill out and sign the quote / warranty (bottom of the last page) and email it back to us along with your tax exempt form.

.....
CUSTOMER CONTACT INFO:
 • Name: Stephen Halleran
 • Phone: 6034693201
 • Email: plainfield.ta@plainfieldnh.org

.....
QUOTE PRICING AND EXPIRATION
 • Quote valid until : 30 days
 • PROMO CODE / OFFER: TPS18

 2-year warranty included.

ELAN CITY
 10-34 44th Drive
 Long Island City, NY 11101
 United States
 Phone. : (646) 878-6259
 Fax. : (646) 770-3906
 Email: sales@elancity.net

Description	Tax	Quantity	Unit Price	Disc.(%)	Price
-------------	-----	----------	------------	----------	-------

Taxes not included.

.....

GENERAL TERMS AND CONDITIONS OF SALES AND DELIVERY - WARRANTY

.....

The terms and conditions as cited in this document, apply to any and all sales of radar speed signs supplied by Elan City Inc. Accessories, such as batteries, are covered by a separate and different warranty labeled "battery warranty", included below. Completion and signature of this document is a binding contract. This document must be completed and signed by buyer / client at the time of initial purchase and each future purchase of Elan City Inc. products.

.....

DELIVERY OF GOODS

.....

Upon delivery of all goods, the client is required to verify the external condition of each package. The client must refuse the entire delivery if the package(s) are not in good condition, and contact Elan City Inc immediately. The client is required to verify that the quantities noted on the packing list are in accord with those delivered. If packages are in good condition but the quantity is incomplete as to the packing list, the client must indicate this anomaly directly on the transporter's copy of the delivery-note and must immediately inform Elan City Inc. The liability of potential damage to delivered goods and / or missing packages cannot be attributed to the carrier nor to Elan City Inc. after delivery and suite to non-conformity of these instructions by the buyer.

.....

Good condition and correct quantity of contents of package must be verified within 5 days of delivery. The device must also be tested within these 5 days of delivery to establish its correct functionality. Beyond the 5 days, the payment cannot be contested by the buyer if the device and its accessories are found to be "dead on delivery" and / or malfunctioning and / or missing. Full payment of the complete order must be fulfilled by the buyer, within the time frame previously established on the signed contract (quote).

.....

RETENTION OF TITLE

.....

Delivered goods shall fully remain the property of Elan City Inc. until all goods received have been fully paid for by the buyer. Payment must be made within 30 days of receiving the invoice as indicated on the signed contract (quote). In the event of late payment, a certified notice for account delinquency will be sent to the buyer, which will then allow the buyer 8 days to make full payment. Beyond this time frame, Elan City Inc. retains the right to remove the materiel from the buyer.

.....

WARRANTY

.....

Delivered goods are fully covered by the warranty, including the device and its components as well as the labor and delivery fees associated with its repairs and / or replacement suite to defects approved by Elan City Inc. for a full 24 months from the date of delivery arrival, with the exception of batteries which are not covered by this warranty. (see "Battery Warranty")

ELAN CITY
 10-34 44th Drive
 Long Island City, NY 11101
 United States
 Phone. : (646) 878-6259
 Fax. : (646) 770-3906
 Email: sales@elancity.net

Description	Tax	Quantity	Unit Price	Disc.(%)	Price
<p>..... In the case of device malfunction, Elan City Inc. will carry out remote diagnostic checks with the client and with their approval, in order to identify any defective components (power supply, software, etc.) prior to proceeding with in-shop repairs, if needed. </p>					
<p>..... WARRANTY DISCLAIMER: The Warranty does not apply to any damage caused by but not exclusive to: </p>					
<ul style="list-style-type: none"> • Vandalism, fire, falls or impact • Abuse or mishandling • Unauthorized modifications and / or unauthorized additional / replacement accessories or products • Damage caused during transportation (see clause "Delivery of Goods") • Malfunctions due to improper connection or battery cable polarity inversion • Problems suite to improper installation non-compliant to our recommendations • Problems suite to wearing parts and / or accessories including the following but not exclusive to: batteries over 6 months old, broken / worn pole straps, broken / worn pole, etc. 					
<p>..... Any repairable device, not or no longer covered by the warranty, which is returned to our after-sales service, will automatically undergo a refurbishment / repair quote, which will be submitted to the customer for acceptance or rejection. In case of rejection, the client will be liable for delivery costs and diagnostic testing costs incurred by Elan City Inc. </p>					
<p>..... RETURNS PROCEDURE: The client must inform the Customer Service department and describe the problem encountered in detail. The Elan City technicians will assist the client and attempt to identify the problem by performing remote diagnostic tests. If remote testing concludes defective device and / or components, the technician will attribute an RMA (Return Merchandise Authorization) or Claim Number to the customer, authorizing product return to the After Sales Service Department. This RMA / Claim number will be confirmed by email, along with a form outlining the After Sales Service Return Policy. The form must be completed, signed and dated by the client, and returned to the Elan City logistics department who will then process the request. A transportation request will then be sent by email to the customer and the removal of the package will be organized through an Elan City Inc. authorized carrier. </p>					
<p>..... In the case of customer refusal of the initial remote diagnostic testing, resulting in the independent and unauthorized sending of device / product(s), the devices / product(s) found non-defective, will not be covered by the warranty. The customer will then receive a quote from the After Sales Service Department for the in-shop diagnostic tests and the delivery costs for device / product(s) retrieval, the payment of which will need to be agreed upon before releasing the device / product(s). </p>					
<p>..... TERMS OF TRANSPORT : Failure to comply with the terms of transportation below, will cancel the RMA and the package will be returned to sender. </p>					
<ul style="list-style-type: none"> • Batteries must not be present in the device or the device's packaging during the transportation • The device must be sent back in its original packaging. This includes properly packaging the device in the original foam and the original box. • Protective foam must protect all four corners of the device, in accordance to its original packaging when initially received. • The package must be sealed with security tape at both ends. • If the original packaging was not kept or was lost, a quote for replacement packaging will be sent to the client. 					

ELAN CITY
 10-34 44th Drive
 Long Island City, NY 11101
 United States

Phone. : (646) 878-6259
 Fax. : (646) 770-3906
 Email: sales@elancity.net

Description	Tax	Quantity	Unit Price	Disc.(%)	Price
-------------	-----	----------	------------	----------	-------

- If the package is being shipped by pallet, the package must be put upright and film-wrapped before shipment.

.....

BATTERY WARRANTY

.....

Batteries are under warranty by Elan City Inc. for 6 months. The same conditions of “delivery of goods” and “retention of title” are true for the batteries as for the device. Replacement batteries must be purchased from Elan City Inc. Use of non Elan City Inc. batteries and / or accessories, can annul the warranty(s), including the device’s warranty. (See clause “warranty disclaimer”). Battery wires cannot be sold separately and must be purchased as a battery pack.

.....

TERMS & CONDITIONS AND REIMBURSEMENT

.....

All sales are final: no returns , exchanges and / or reimbursements. Elan City Inc. is not liable and will not reimburse or exchange goods for the following reasons but not exclusive to these reasons:

.....

- Product’s non-accordance with current and / or future local laws and / or regulations regarding the following but not exclusive to: radar speed sign specifications, road / zone placement, installation / mounting
- Product’s non-accordance with Department of Transportation’s regulation or choice of approval / authorization.
- Customer’s dissatisfaction with product and / or customer service, company policies, etc.
- Change of personnel (original buyer change of post or title).
- Purchase made by unauthorized personnel.

.....

Warranty active upon delivery of goods.

.....

TO PLACE AN ORDER, PLEASE COMPLETE THE FOLLOWING:

.....

Title: _____ Name (First, Last): _____

Check this box:

I have read, understood and agree to the terms of the Elan City Inc. :
 “General Terms of Sales and Delivery - WARRANTY.”

Signature: _____

Date: (m/ d/ y): __ / __ / __

ELAN CITY
10-34 44th Drive
Long Island City, NY 11101
United States

Phone. : (646) 878-6259
Fax. : (646) 770-3906
Email: sales@elancity.net

Description	Tax	Quantity	Unit Price	Disc.(%)	Price
-------------	-----	----------	------------	----------	-------
