

**SITE SQUARE FOOTAGES & PERCENTAGES**

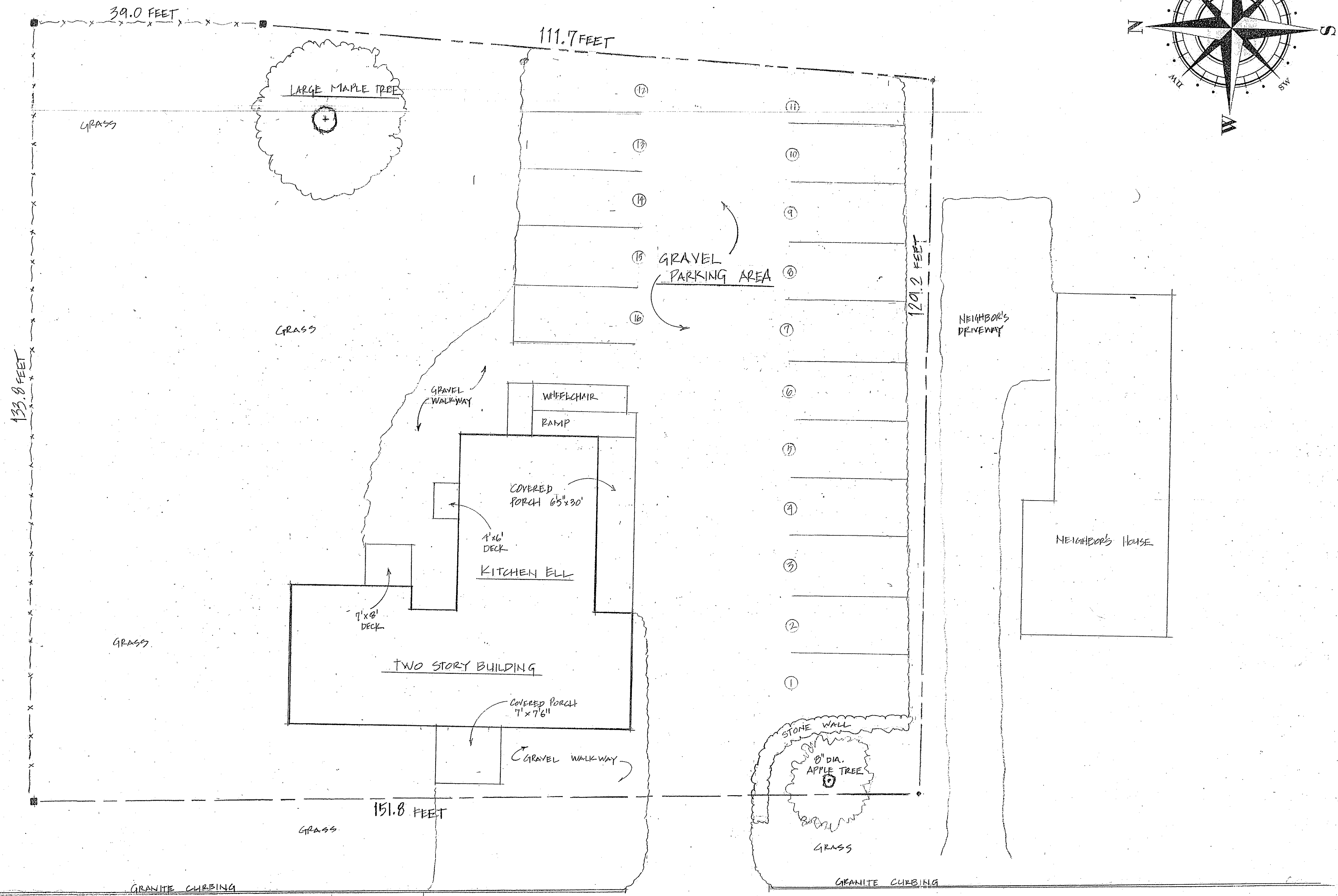
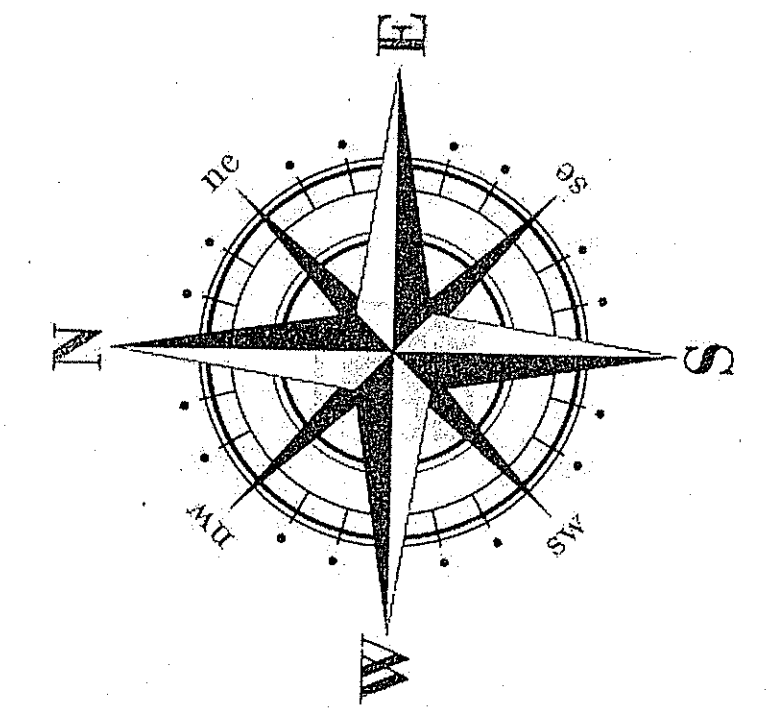
LOT AREA : 20,134 square feet or +/- 0.46 ACRES

STRUCTURES : TWO STORY BUILDING FOOTPRINT = 1968 square feet  
COVERED PORCHES & DECKS = 490 square feet

GRAVEL & STAY-MATT AREAS : PARKING LOT & WALKWAYS = 7572 square feet

PERCENTAGE OF LOT TO IMPERVIOUS SURFACES :

1968 SF (HOUSE)  
+ 490 SF (PORCHES & DECKS)  
+ 7572 SF (PARKING & WALKWAYS)  
-----  
10,030 SQUARE FEET divided by 20,134 SQUARE FEET (LOT) = **49.8%**  
**IMPERVIOUS SURFACES**



**Site Plan**

Scale : 1" = 10 feet

ROUTE 12A

**Straight Edge**  
ARCHITECTURE

Shawn R. Rogers Plainfield, NH 03781 # 603-298-7091

**Little Bits of Love, LLC**  
# 1097 Route 12a - Plainfield, NH

Date : July 6, 2015