

# Trails

for non-motorized use

## Town of Plainfield, NH

Map Version 4, March, 2010

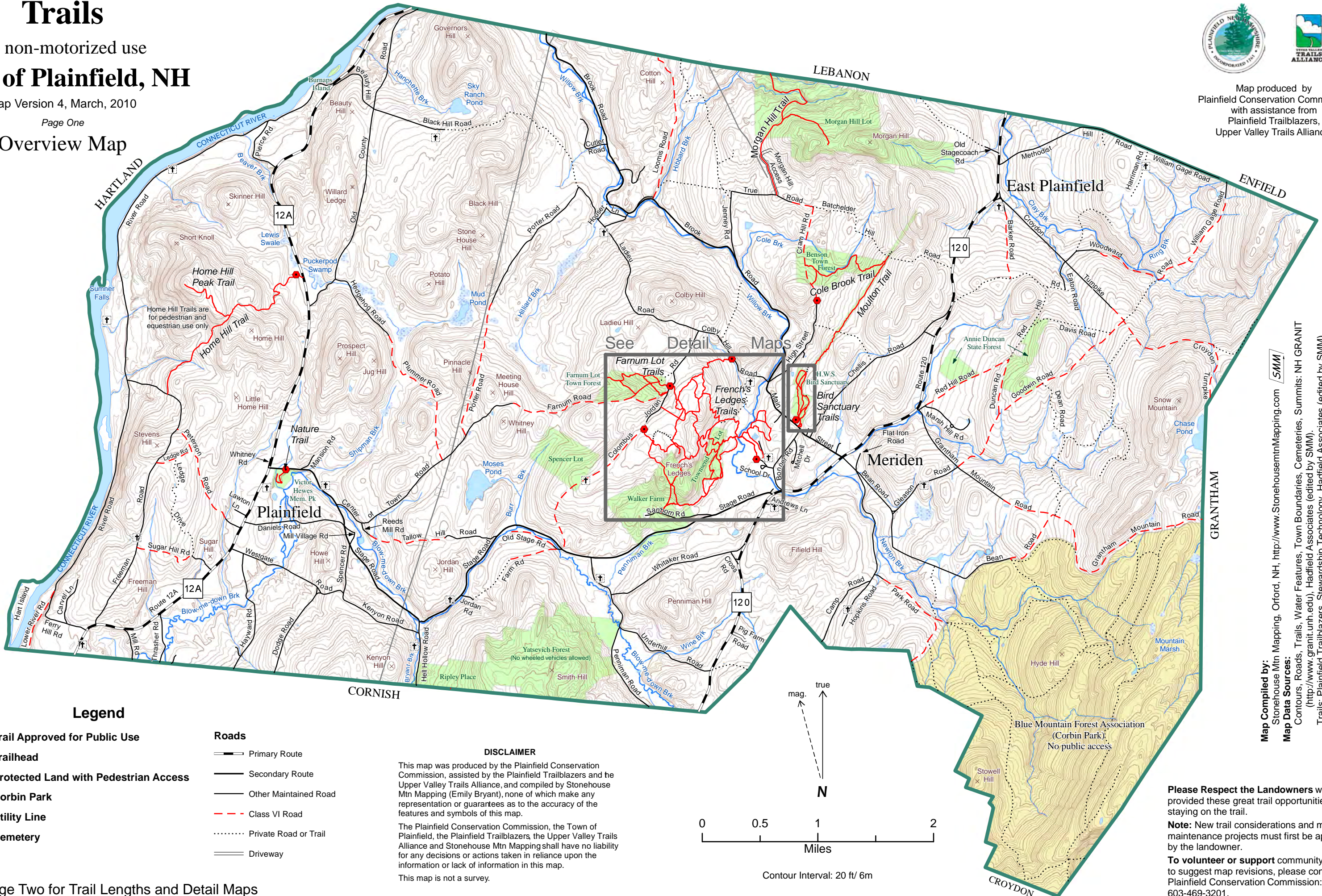
Page One

### Overview Map



Map produced by Plainfield Conservation Commission with assistance from Plainfield Trailblazers, Upper Valley Trails Alliance.

HARTLAND  
WINDSOR  
CORNISH



#### Legend

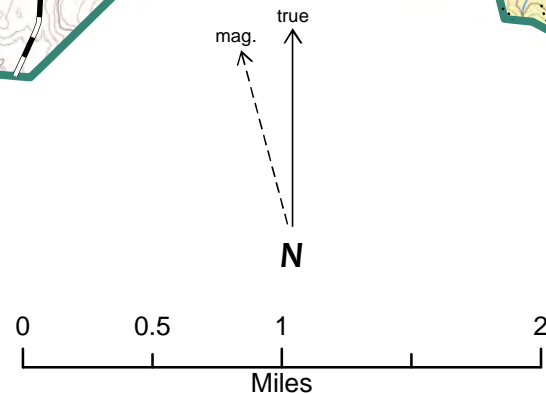
- Trail Approved for Public Use
- Trailhead
- Protected Land with Pedestrian Access
- Corbin Park
- Utility Line
- Cemetery
- Primary Route
- Secondary Route
- Other Maintained Road
- Class VI Road
- Private Road or Trail
- Driveway

#### DISCLAIMER

This map was produced by the Plainfield Conservation Commission, assisted by the Plainfield Trailblazers and the Upper Valley Trails Alliance, and compiled by Stonehouse Mtn Mapping (Emily Bryant), none of which make any representation or guarantees as to the accuracy of the features and symbols of this map.

The Plainfield Conservation Commission, the Town of Plainfield, the Plainfield Trailblazers, the Upper Valley Trails Alliance and Stonehouse Mtn Mapping shall have no liability for any decisions or actions taken in reliance upon the information or lack of information in this map.

This map is not a survey.



Contour Interval: 20 ft / 6m

Map Compiled by: Stonehouse Mtn Mapping, Orford, NH, <http://www.stonehousemtnmapping.com> [SMM]  
 Map Data Sources: Contours, Roads, Trails, Water Features, Town Boundaries, Cemeteries, Summits: NH GRANIT (<http://www.granit.unh.edu>), Hadfield Associates (edited by SMM).  
 Trails: Plainfield Trailblazers, Stewardship Technology, Hadfield Associates (edited by SMM).  
 Protected Land: NH GRANIT, Upper Valley Land Trust, Stewardship Technology. (edited by SMM).  
 Utility line: Digitized from Orthophotos by SMM.

**Please Respect the Landowners** who have provided these great trail opportunities by staying on the trail.

**Note:** New trail considerations and many maintenance projects must first be approved by the landowner.

**To volunteer or support** community trails or to suggest map revisions, please contact the Plainfield Conservation Commission: 603-469-3201.

See Page Two for Trail Lengths and Detail Maps